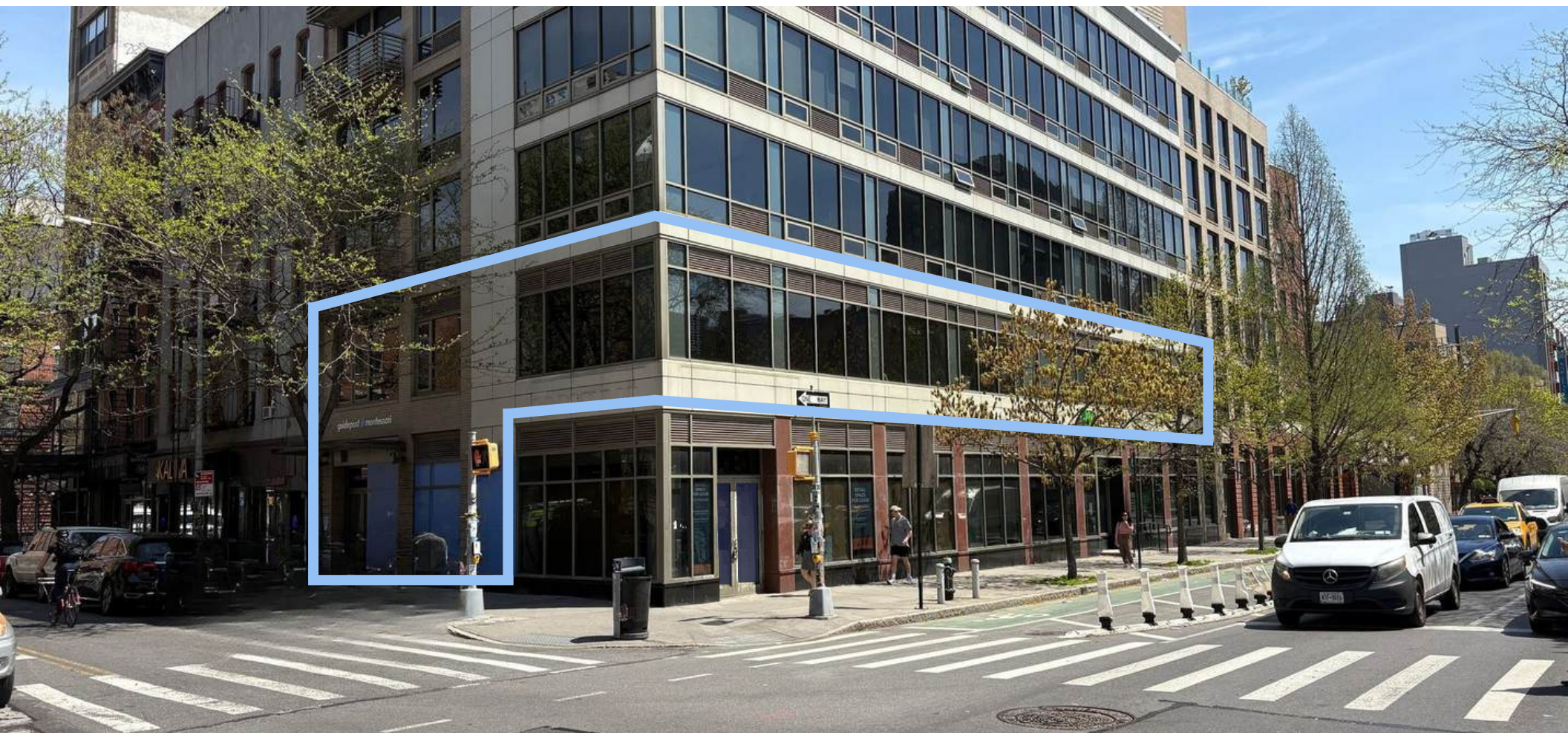


EAST VILLAGE, MANHATTAN, NY

310 EAST HOUSTON STREET

MOD



SPACE DETAILS

LOCATION

Northeast corner of Avenue B

SPACE

300 SF Ground Floor
4,753 SF Second Floor

FRONTAGE

48 FT on Avenue B
140 FT on East Houston

FORMERLY

Guidepost Montessori School

POSSESSION

Immediate

ASKING RENT

Upon Request

CONTACTS

MEYER DAGMY

718-249-3613
m@modcre.com

EDDIE MAMIYE

917-379-6719
e@modcre.com

2774 CONEY ISLAND AVE, BROOKLYN, NY 11235

NEIGHBORS

Clinton Street Baking Co., Y7 Yoga, Pause Cafe, Duane Reade, and Union Market.

TRANSPORTATION

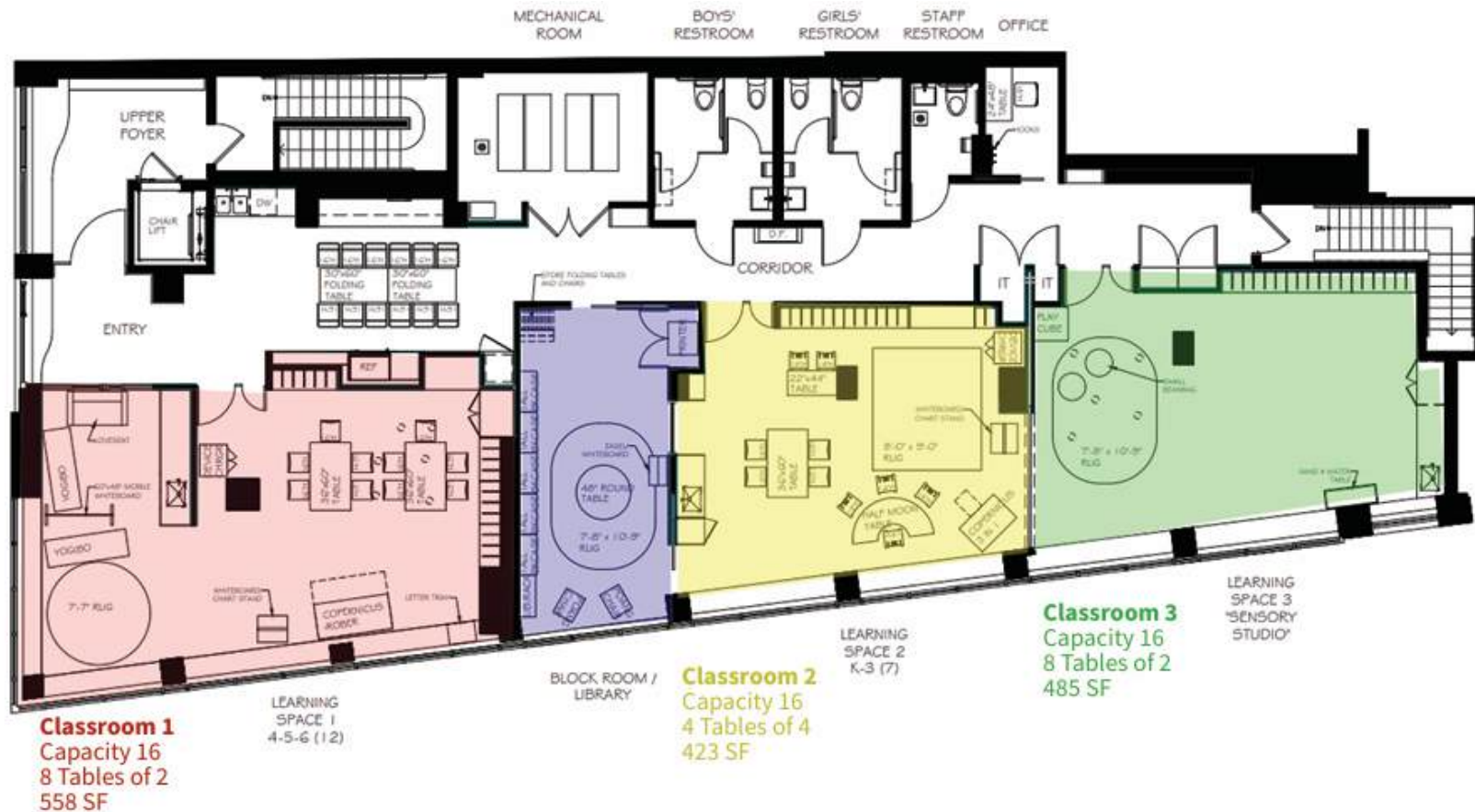


COMMENTS

- Dedicated Elevator and Entrance at Grade on Avenue B
- Turnkey Preschool Space
- Three-Four Classrooms
- Abundance of natural light
- All uses considered



FLOOR PLANS



CONTACTS

MEYER DAGMY

718-249-3613

m@modcre.com

EDDIE MAMIYE

917-379-6719

e@modcre.com

2774 CONEY ISLAND AVE, BROOKLYN, NY 11235

MOD

EXTERIOR IMAGES



CONTACTS

MEYER DAGMY

718-249-3613

m@modcre.com

EDDIE MAMIYE

917-379-6719

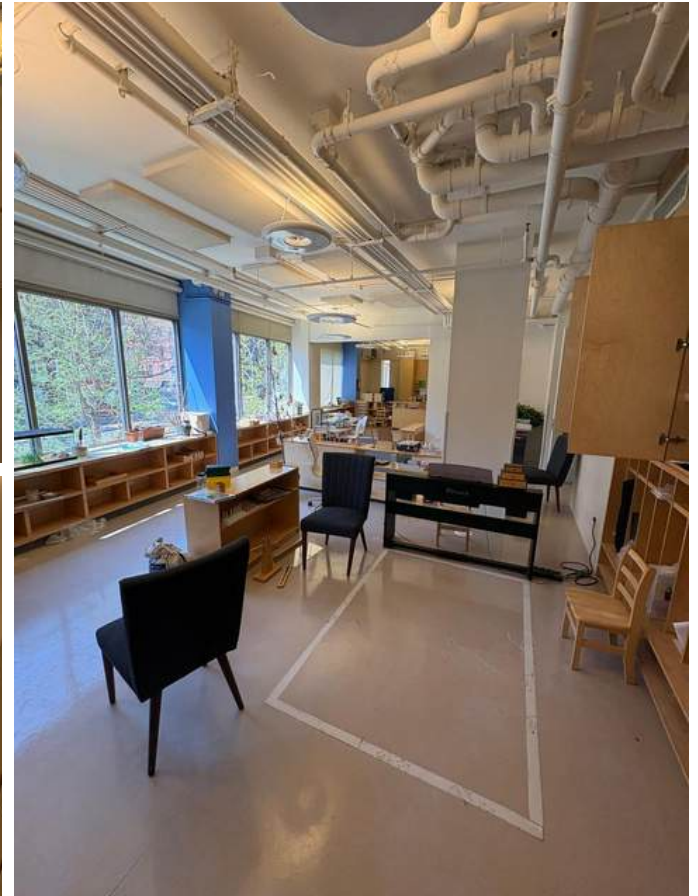
e@modcre.com

2774 CONEY ISLAND AVE, BROOKLYN, NY 11235

© 2024 MOD Commercial Realty LLC. All information provided is deemed reliable, but is not guaranteed and should be independently verified.



INTERIOR IMAGES



CONTACTS

MEYER DAGMY

718-249-3613

m@modcre.com

EDDIE MAMIYE

917-379-6719

e@modcre.com

2774 CONEY ISLAND AVE, BROOKLYN, NY 11235



AREA MAP



CONTACTS

MEYER DAGMY

718-249-3613

m@modcre.com

EDDIE MAMIYE

917-379-6719

e@modcre.com

2774 CONEY ISLAND AVE, BROOKLYN, NY 11235

