

For Lease

# Maestro Professional Park



Scan to View 3D Tour

855 Maestro Drive  
Reno, NV 89511

Point of contact

**Kami Kaba**

Associate  
775.433.1119  
kkaba@logicCRE.com  
S.0197606


**Casey Prostinak, SIOR**

Vice President  
775.813.2866  
cprostinak@logicCRE.com  
S.0177148.LLC


**Landon Gonzalez**

Vice President  
775.741.6397  
lgonzalez@logicCRE.com  
S.0179599.LLC

Listing Snapshot



**Suite E**  
Available Suite



**\$2.25 PSF MG\***  
Lease Rate



**± 1,018 SF**  
Available Square Footage

\*Tenant to pay gas and electric in addition to Modified Gross (MG) Rent. Subject to further detail in Lease.

Property Highlights

- Private offices with ample natural light
- Located within a beautifully landscaped association
- Dedicated suite entrance/exit

Demographics

	<b>148,082</b> Total Population		<b>216,577</b> Daytime Population
	<b>3,283</b> Number of Businesses		<b>1.64%</b> 2024-2029 Population Growth
	<b>139,343</b> Total Employees		<b>\$633,692</b> Median Home Value
	1-mile	3-mile	5-mile
2024 Population	7,032	67,681	148,082
2024 Average Household Income	\$99,783	\$119,131	\$124,485
2024 Total Households	3,293	28,445	62,930

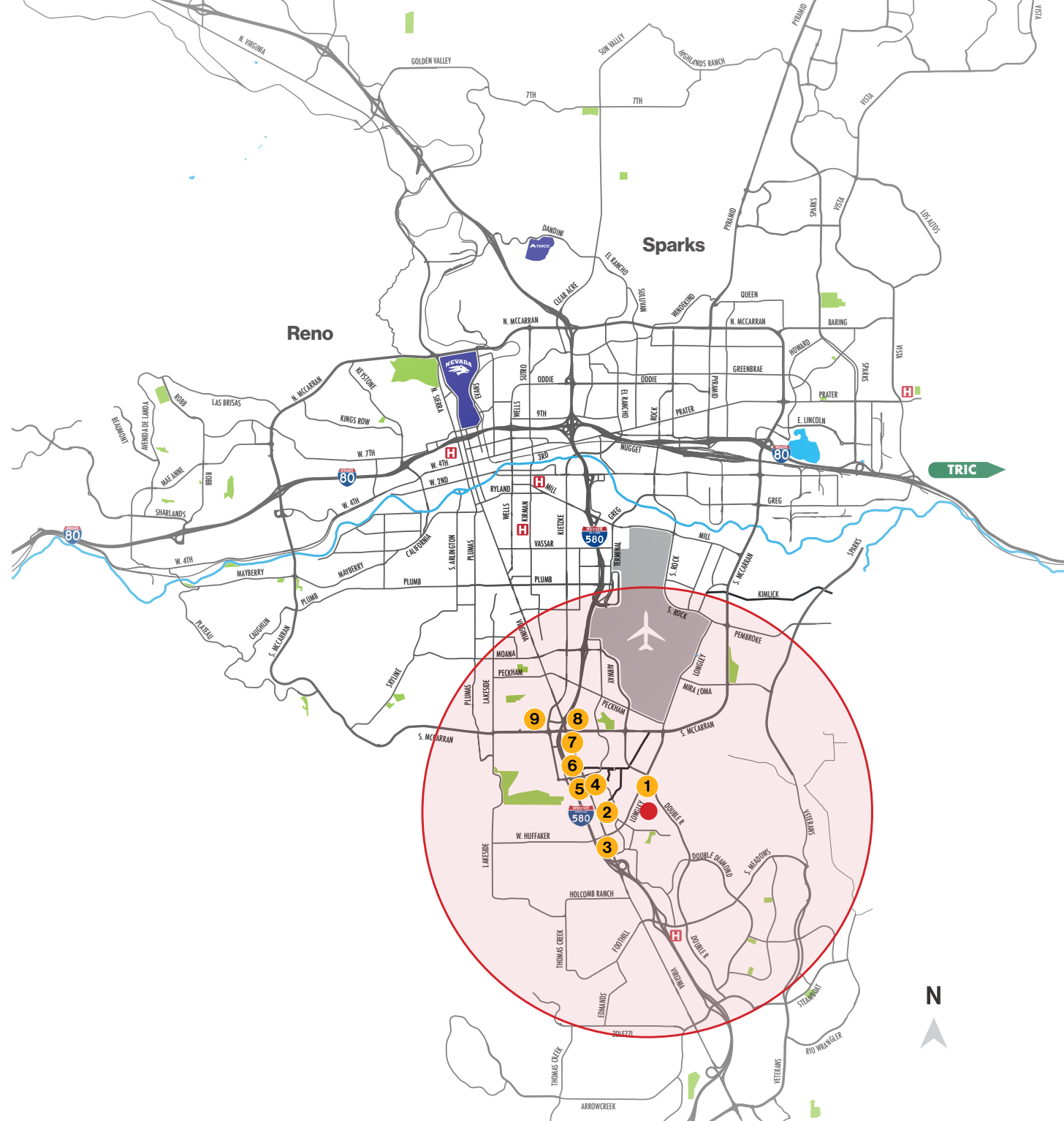


## Vicinity Map

The office is strategically located in a dense and mature residential area servicing  $\pm 148,082$  residents with an average household income of  $\pm \$124,485$  within a 5-mile radius.

### Amenities within a 5-mile radius

- 1 **Northern Nevada Medical Center - Sierra**  
-0.37 miles
- 2 **Sierra Town Center**  
-0.77 miles
- 3 **Southwest Pavilion Shopping**  
-0.86 miles
- 4 **The Home Depot**  
-0.91 miles
- 5 **Commons Shopping Center**  
-1.04 miles
- 6 **Del Monte Plaza**  
-1.19 miles
- 7 **Meadowood Mall**  
-1.30 miles
- 8 **Smithridge Center**  
-1.60 miles
- 9 **Firecreek Crossing**  
-2.0 miles



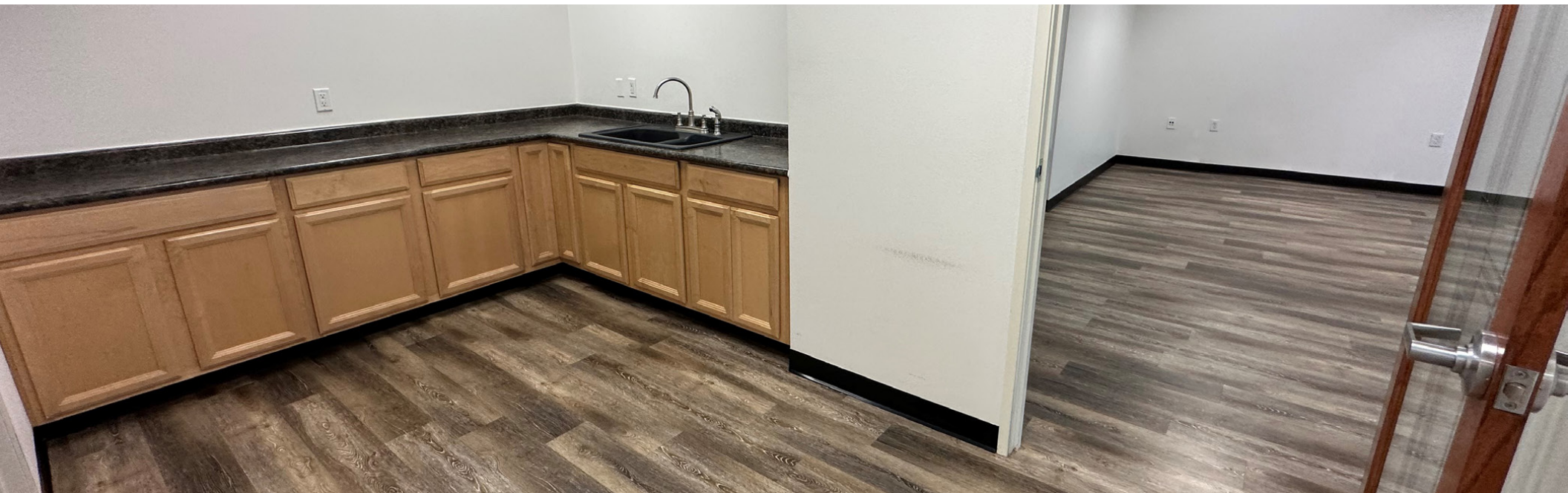


Floor Plan



[Click to View 3D Tour](#)

Property Photos



# LOGIC Commercial Real Estate

## Specializing in Brokerage and Receivership Services



Join our email list and  
connect with us on LinkedIn

The information herein was obtained from sources deemed reliable; however LOGIC Commercial Real Estate makes no guarantees, warranties or representation as to the completeness or accuracy thereof.

For inquiries please reach out to our team.

#### Point of contact

**Kami Kaba**

Associate  
775.433.1119  
kkaba@logicCRE.com  
S.0197606

**Casey Prostinak, SIOR**

Vice President  
775.813.2866  
cprostinak@logicCRE.com  
S.0177148.LLC

**Landon Gonzalez**

Vice President  
775.741.6397  
lgonzalez@logicCRE.com  
S.0179599.LLC