

COMMISSARY KITCHEN FOR LEASE

115 12TH STREET NORTH BIRMINGHAM AL 35203



BUILDING SIZE: 8,231 SF LEASE RATE: \$9.50 PSF NNN

BUILDING FEATURES:

- 1 grade level door, easily accessible
- Current use is a commercial kitchen/commissary, no true need for additional buildout
- Certified to meet Jefferson County Department of Health food safety standards
- Building comes equipped with Two Large Commercial Vent Hoods, ideal for heavy-duty cooking operations, Multiple 3-Compartment Sinks, placed in prep areas for efficient cleaning and sanitation, and Two 175-Gallon Water Heaters, ensuring a reliable supply of hot water.
- The Tillman Complex sits in an excellent location in Birmingham's Central Business District, located directly across So Spiffy Design, The Denham Building, and Urban Supply redevelopment
- Rare availability with surrounding tenants like, Monday Night Brewery, Tucana Tiki Lounge, Updown Arcade, Tasty Town Greek Lounge, Regions Field, and many more entertainment concepts
- Ideal For Food trucks & mobile vendors, Catering companies, Meal prep services, Small food manufacturers, Start-up restaurants or ghost kitchens

Rich Vanchina, SIOR

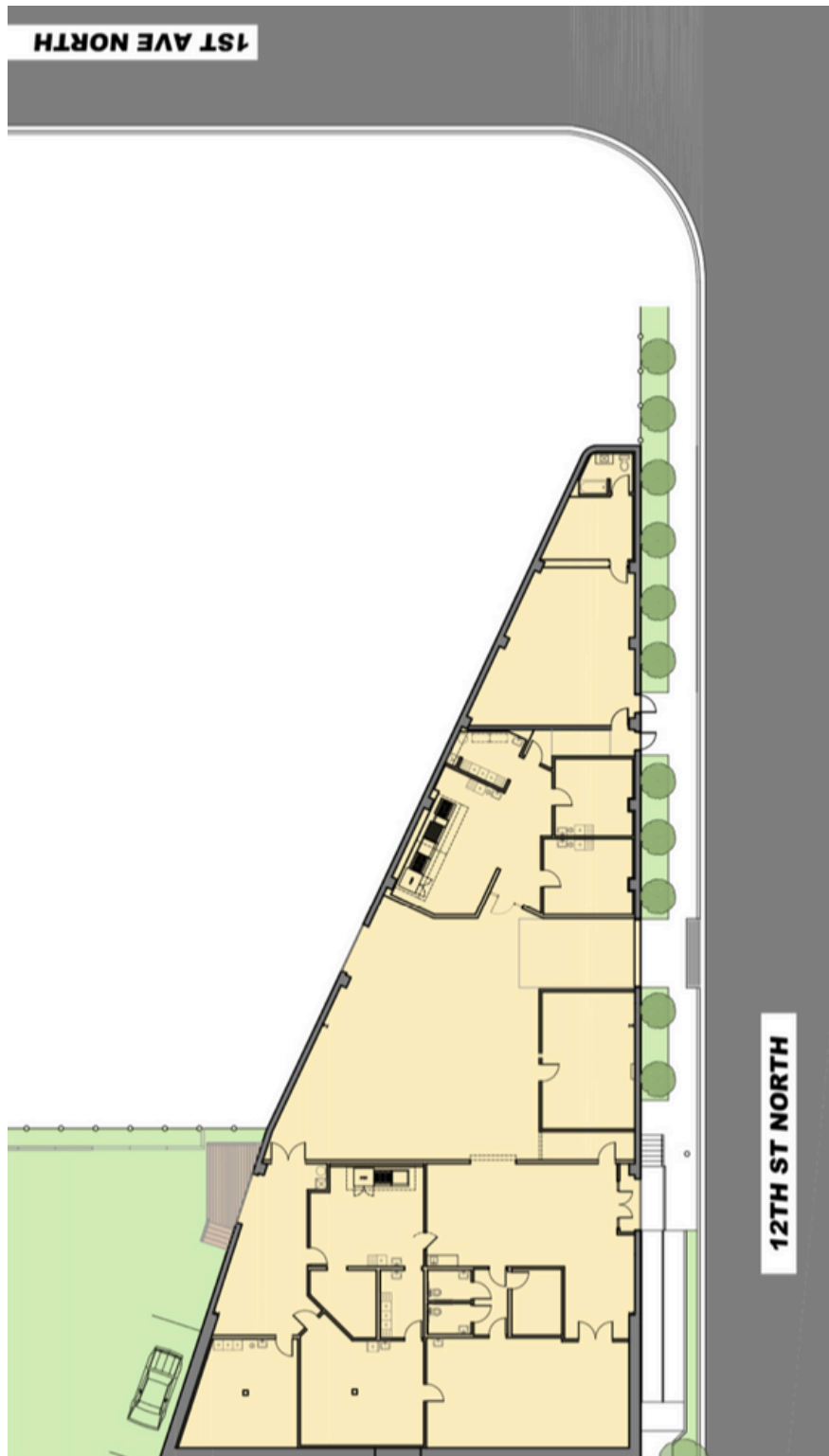
205.492.3137

rich@tessa-cre.com

TESSA
COMMERCIAL REAL ESTATE

COMMISSARY KITCHEN FOR LEASE

FLOOR PLANS



Rich Vanchina, SIOR
205.492.3137
rich@tessa-cre.com

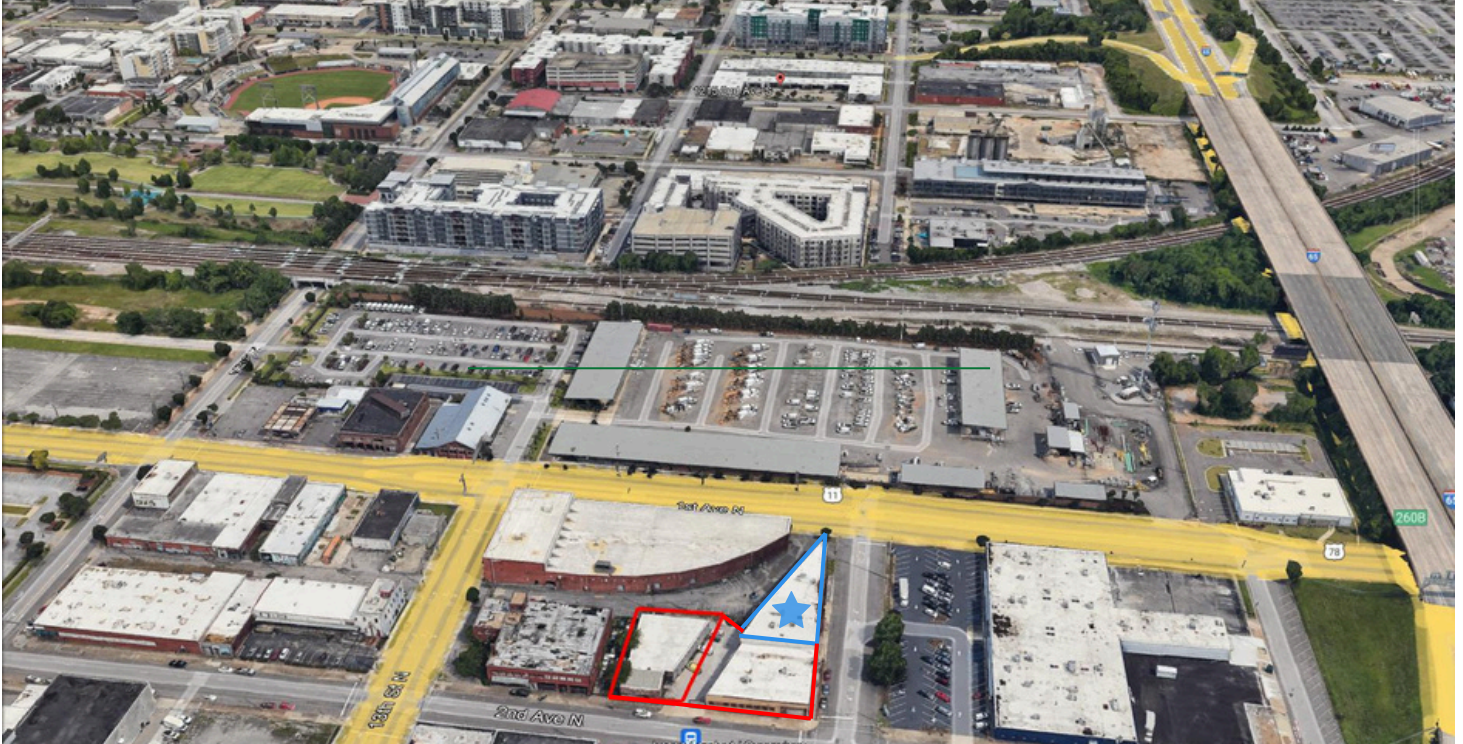
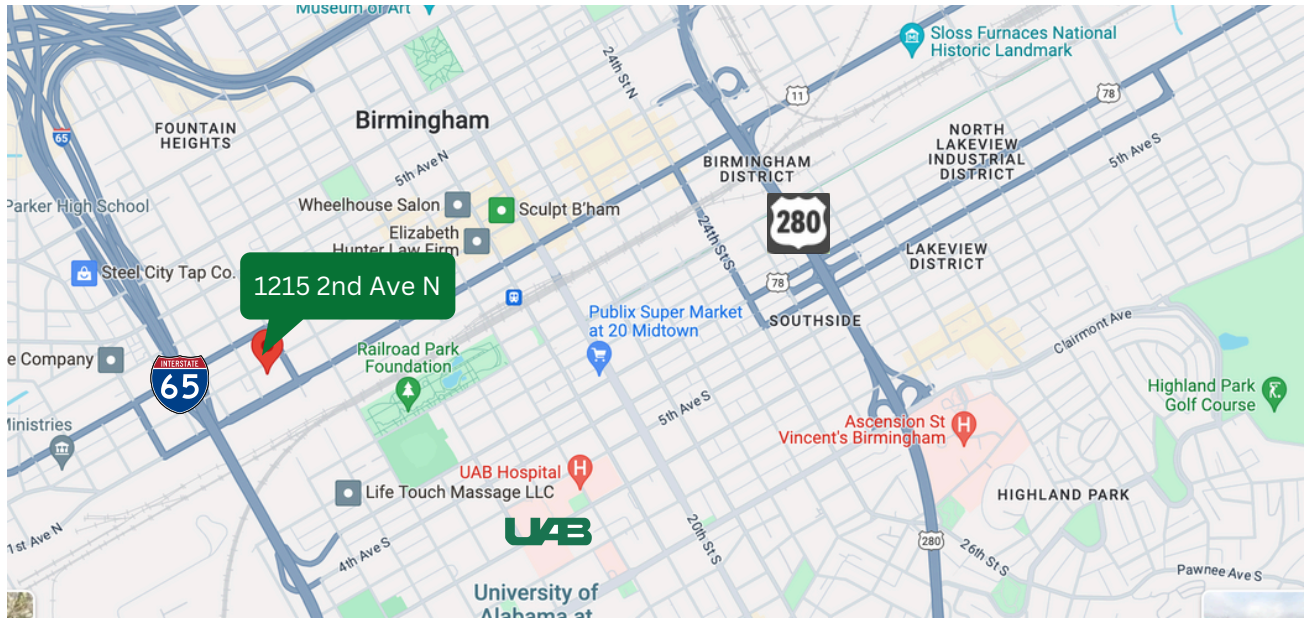
TESSA
COMMERCIAL REAL ESTATE

COMMISSARY KITCHEN FOR LEASE



COMMISSARY KITCHEN FOR LEASE

115 12TH STREET NORTH BIRMINGHAM AL 35203



Rich Vanchina, SIOR
205.492.3137
rich@tessa-cre.com

TESSA
COMMERCIAL REAL ESTATE