

ORCHARD RIDGE  
OFFICE PARK

OFFICE SPACE

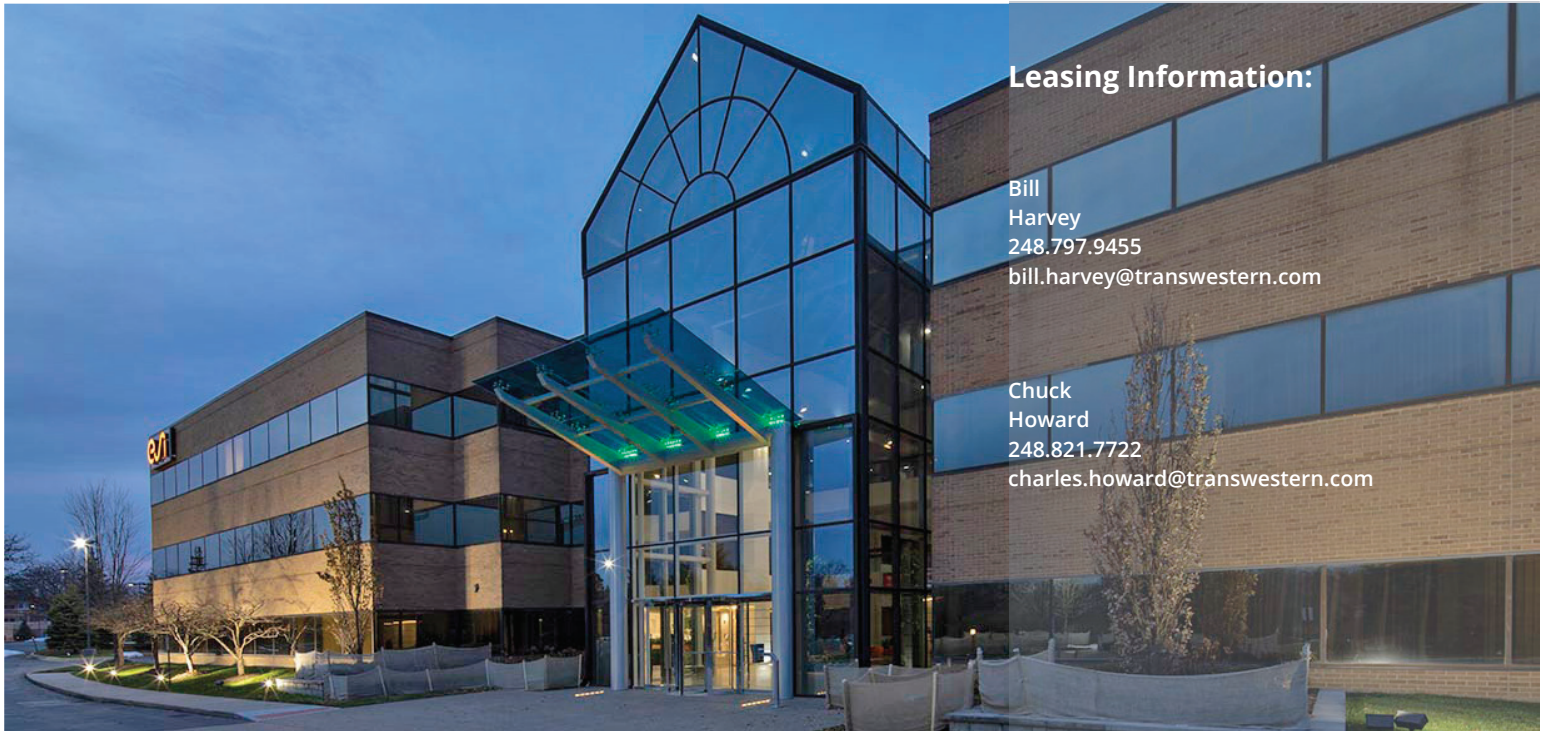
MOVE IN READY



  
TRANSWESTERN  
REAL ESTATE  
SERVICES

# ORCHARD RIDGE OFFICE PARK

32605 W 12 MILE ROAD | FARMINGTON HILLS, MI 48334  
Farmington/Farmington Hills Submarket



## Leasing Information:

Bill  
Harvey  
248.797.9455  
bill.harvey@transwestern.com

Chuck  
Howard  
248.821.7722  
charles.howard@transwestern.com

## Availability:

- 1st Floor 2,000 sf - 17,849 sf
- 2nd Floor 8,509 to 29,210 sf
- 3rd Floor Up to 23,000 sf

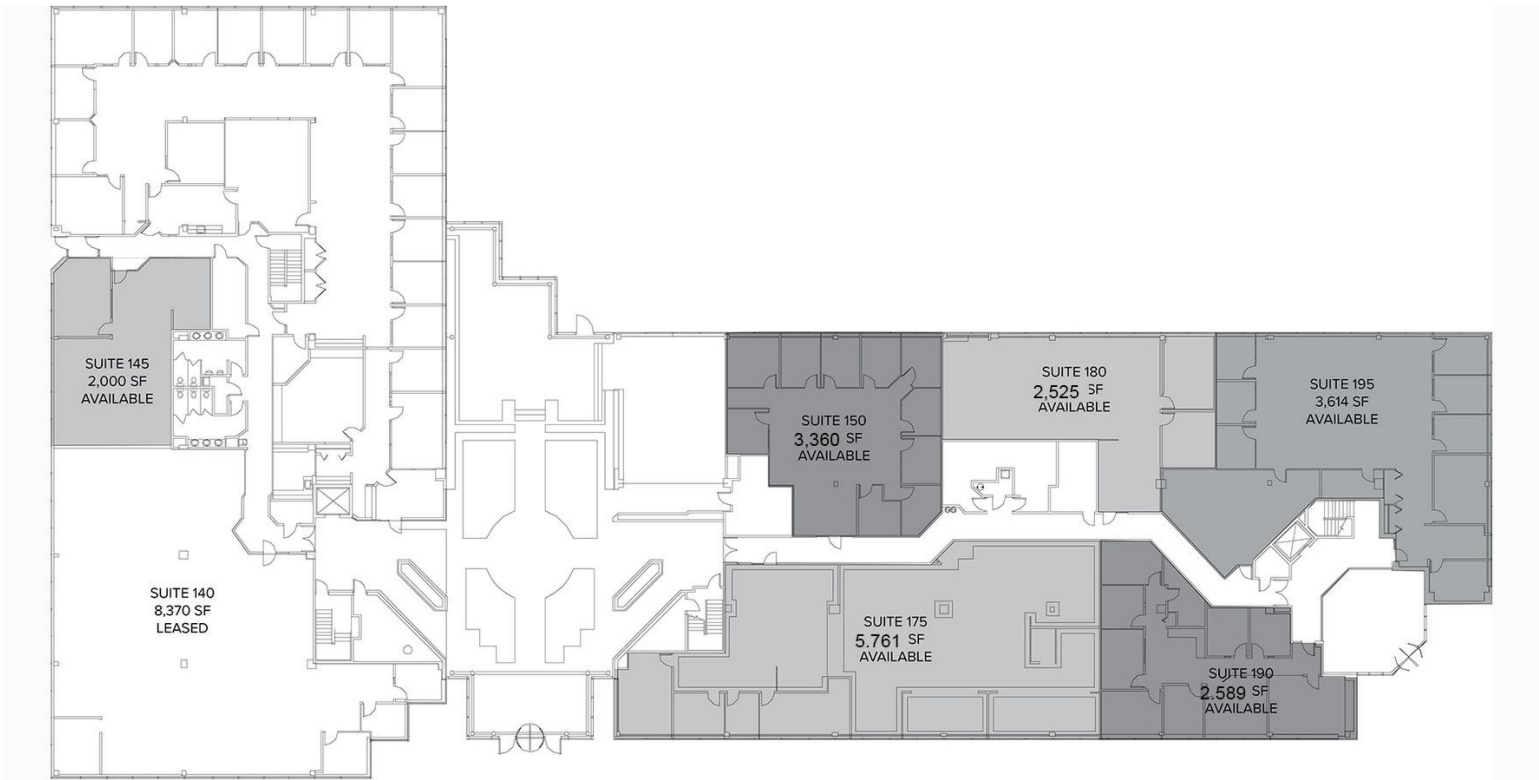
## Building Amenities:

- Security System
- Building/Monument Signage Available
- Cafe on Site
- Ample Parking
- Property Manager on Site

## Features

- Convenient access to I-275 , I-696 & I-96
- Immediate area: hotels, dining & retail
- Multi-Tenant
- Renovated lobby and comon area
- Scenic Setting
- Post Office immediatley adjacent





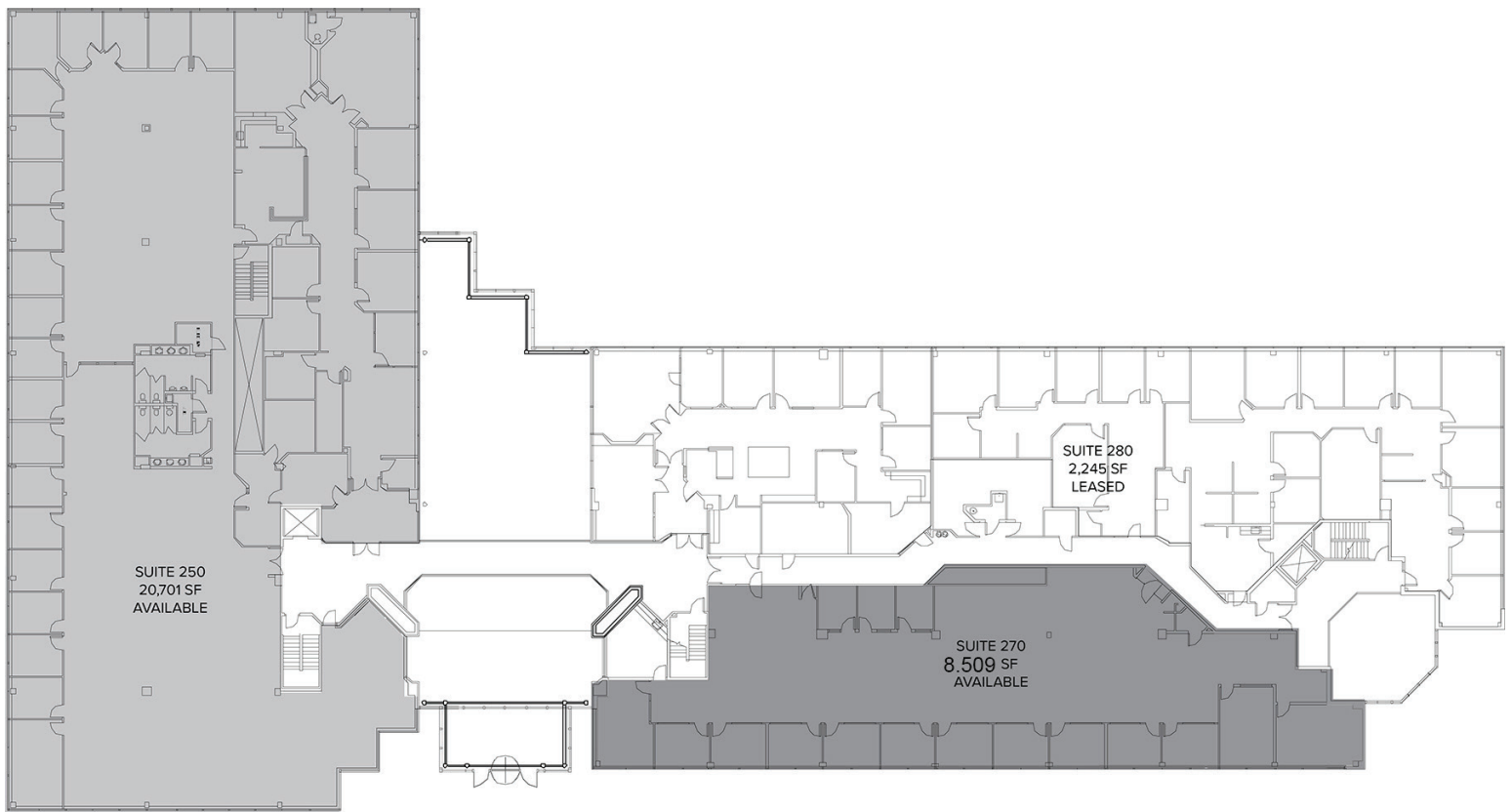
# ORCHARD RIDGE OFFICE PARK

FIRST FLOOR  
FROM 2,000 SF up to 17,849 SF AVAILABLE

## Leasing Information:

|  |  |
|--|--|
| <b>Bill Harvey</b><br>248.797.9455<br>bill.harvey@transwestern.com | <b>Chuck Howard</b><br>248.821.7722<br>charles.howard@transwestern.com |
|--|--|





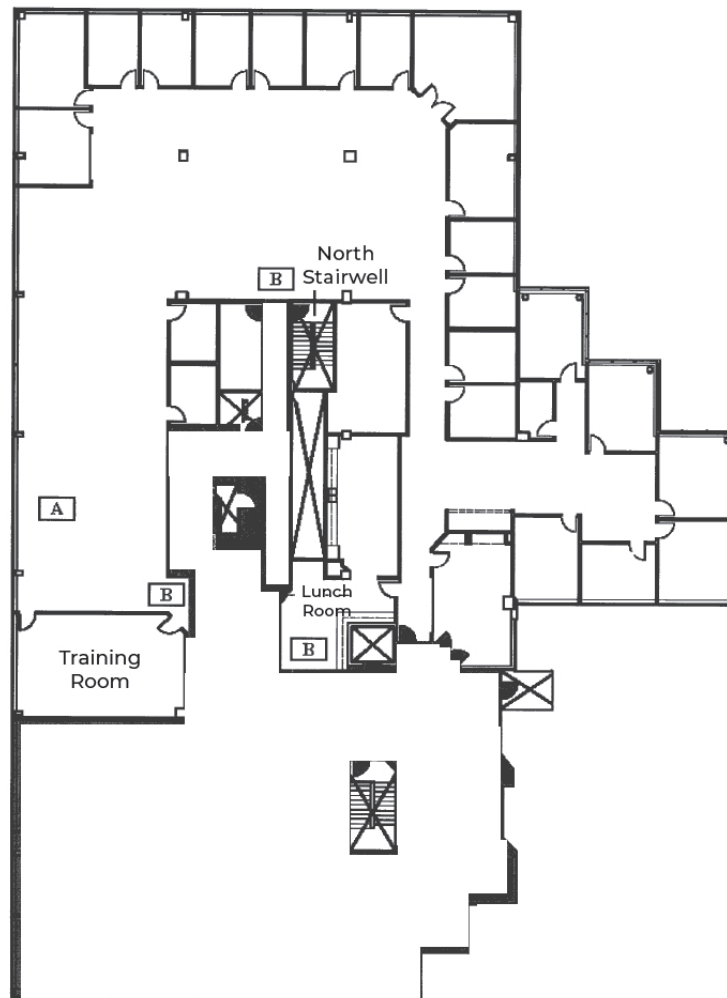
# ORCHARD RIDGE OFFICE PARK

2ND FLOOR  
FROM 8,509 SF UP TO 29,210 SF AVAILABLE

## Leasing Information:

|  |  |
|--|--|
| <b>Bill<br/>Harvey</b><br>248.797.9455<br>bill.harvey@transwestern.com | <b>Chuck<br/>Howard</b><br>248.821.7722<br>charles.howard@transwestern.com |
|--|--|

  
**TRANSWESTERN**  
REAL ESTATE  
SERVICES



# ORCHARD RIDGE OFFICE PARK

3rd Floor  
Approx. 23,000 SF

## Leasing Information:

**Bill  
Harvey**  
248.797.9455  
bill.harvey@transwestern.com

**Chuck  
Howard**  
248.821.7722  
charles.howard@transwestern.com

  
**TRANSWESTERN**  
REAL ESTATE  
SERVICES