



# TELEGRAPH POINTE

SANTA FE SPRINGS | CALIFORNIA

# BRAND NEW CONSTRUCTION!

## AVAILABLE FOR LEASE 121,124 SF

10251 SANTA FE SPRINGS ROAD, SANTA FE SPRINGS

NEWMARK



# BUILDING SPECIFICATIONS 10251 SANTA FE SPRINGS ROAD

## BUILDING THREE 121,124 SF

- 121,124 SF
- 6.85 Acres
- 7,140 SF of Two-Story Office
- 14 Dock-High Doors
- 60' Staging Bay
- 2 Drive-In Doors
- 170 Parking Spaces (approx.)
- 30' Clearance
- ESFR Sprinklers
- Motion Sensitive LED Lighting
- 2000 AMPS (3000A Pull)
- 2% Skylights and Smoke Hatches
- LEED Certified (projected)
- Painted interior walls, white scrim, and solar ready roofs.





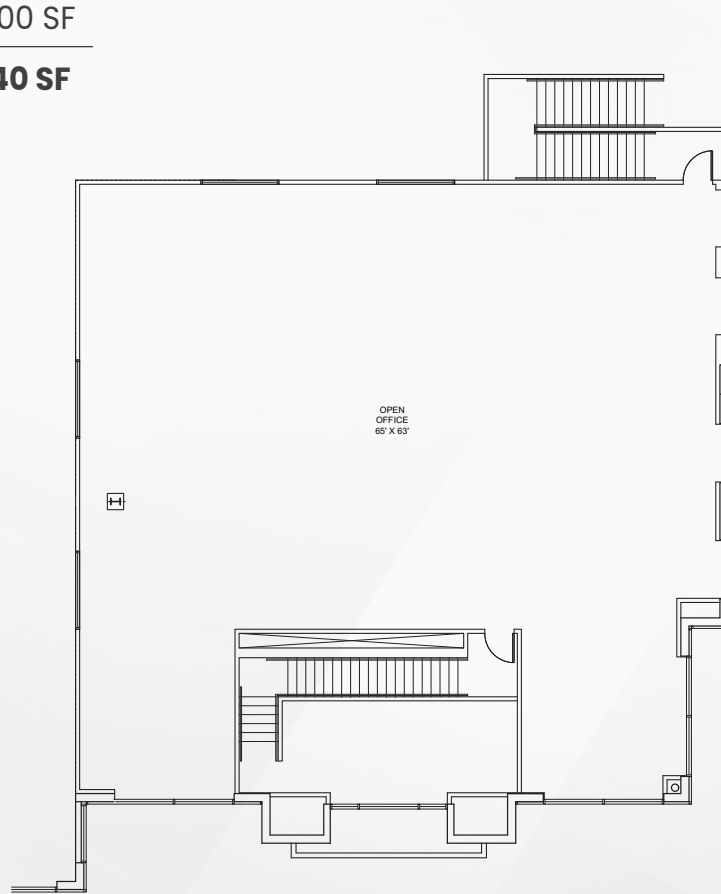
# OFFICE SPECIFICATIONS

10251 SANTA FE SPRINGS ROAD

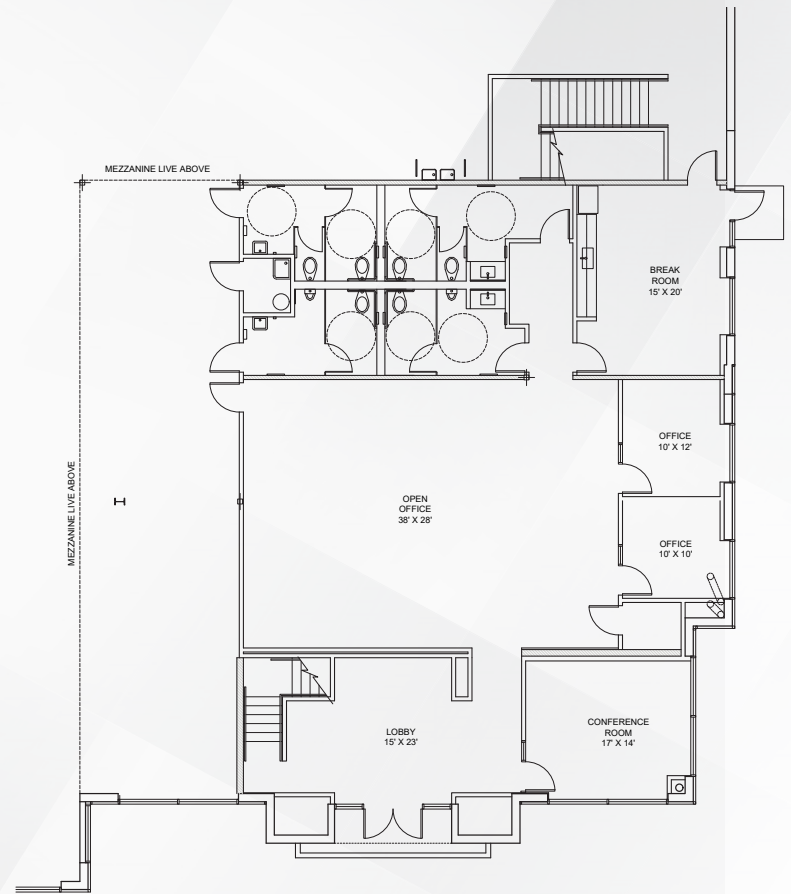
1ST FLOOR 3,140 SF

2ND FLOOR 4,000 SF

**TOTAL 7,140 SF**



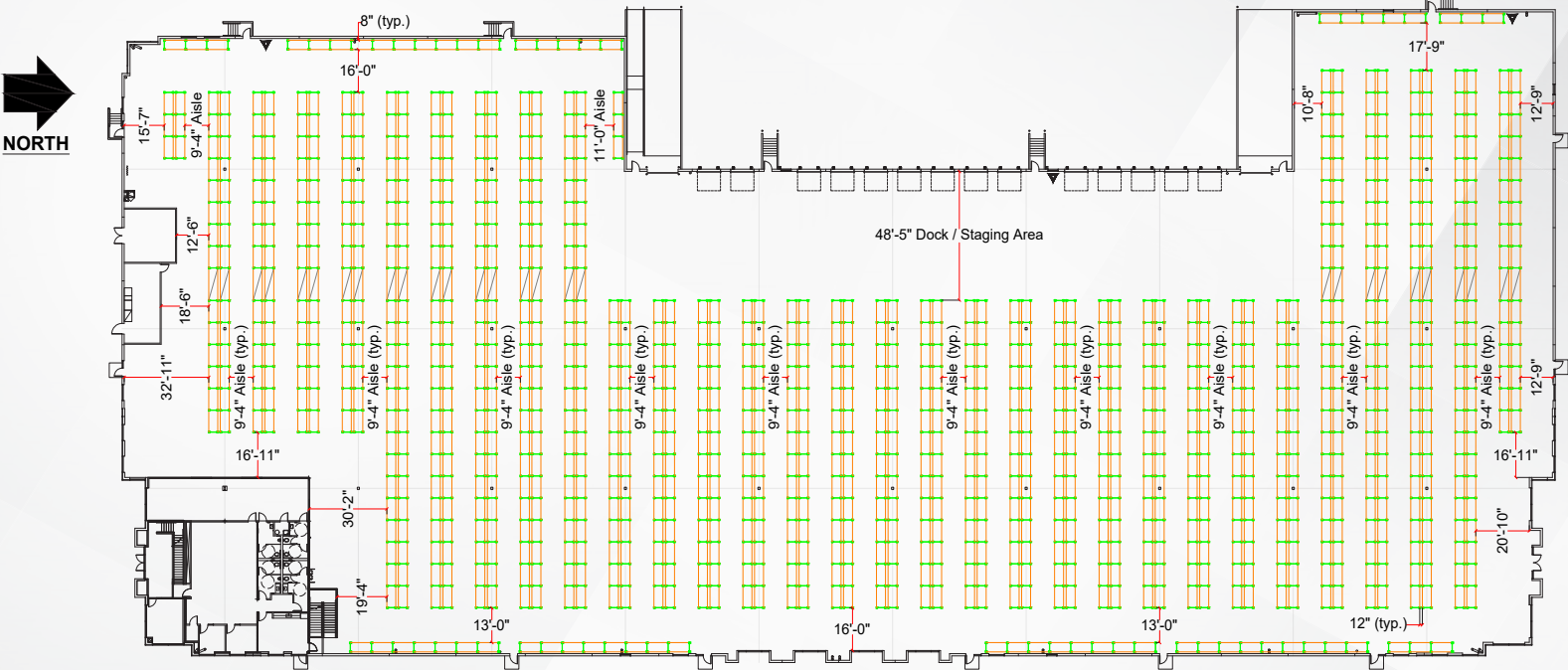
SE CORNER OF THE BUILDING  
2ND FLOOR



SE CORNER OF THE BUILDING  
1ST FLOOR

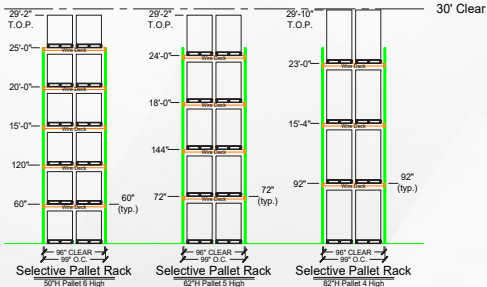
RACKING PLAN

10251 SANTA FE SPRINGS ROAD



30' CLEAR HEIGHT  
121,124 SQFT

Number of Bays	Pallet Height	Pallet Positions
1,092	50"	13,020
	62"	10,808
	82"	8,680



7351 Garden Grove Boulevard, Unit B • Garden Grove, CA 92841  
Wes Badorek • Cell: (714) 321-0826 • Email: wbadorek@catalinais.com



NEWMARK



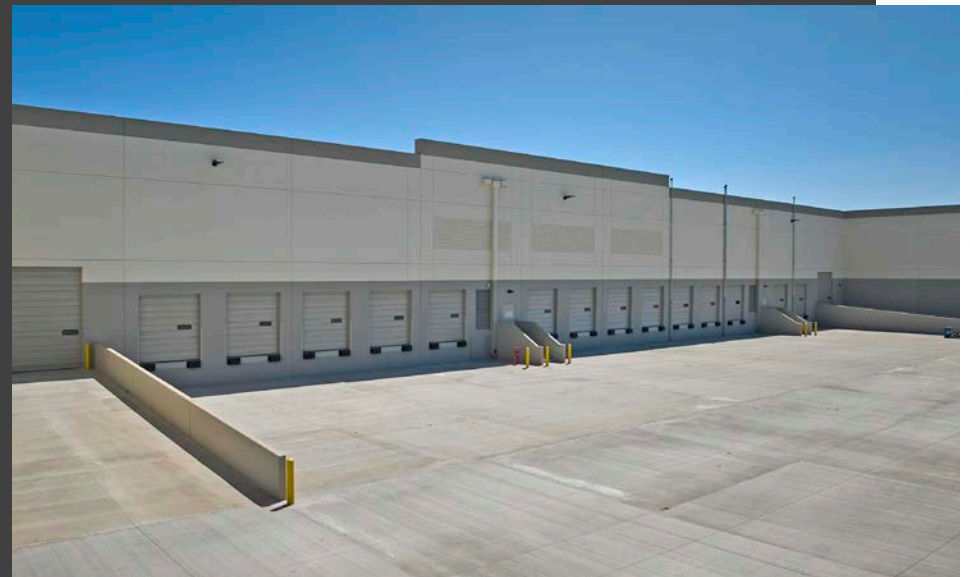
CENTRIS



OUTRIGGER  
INDUSTRIAL

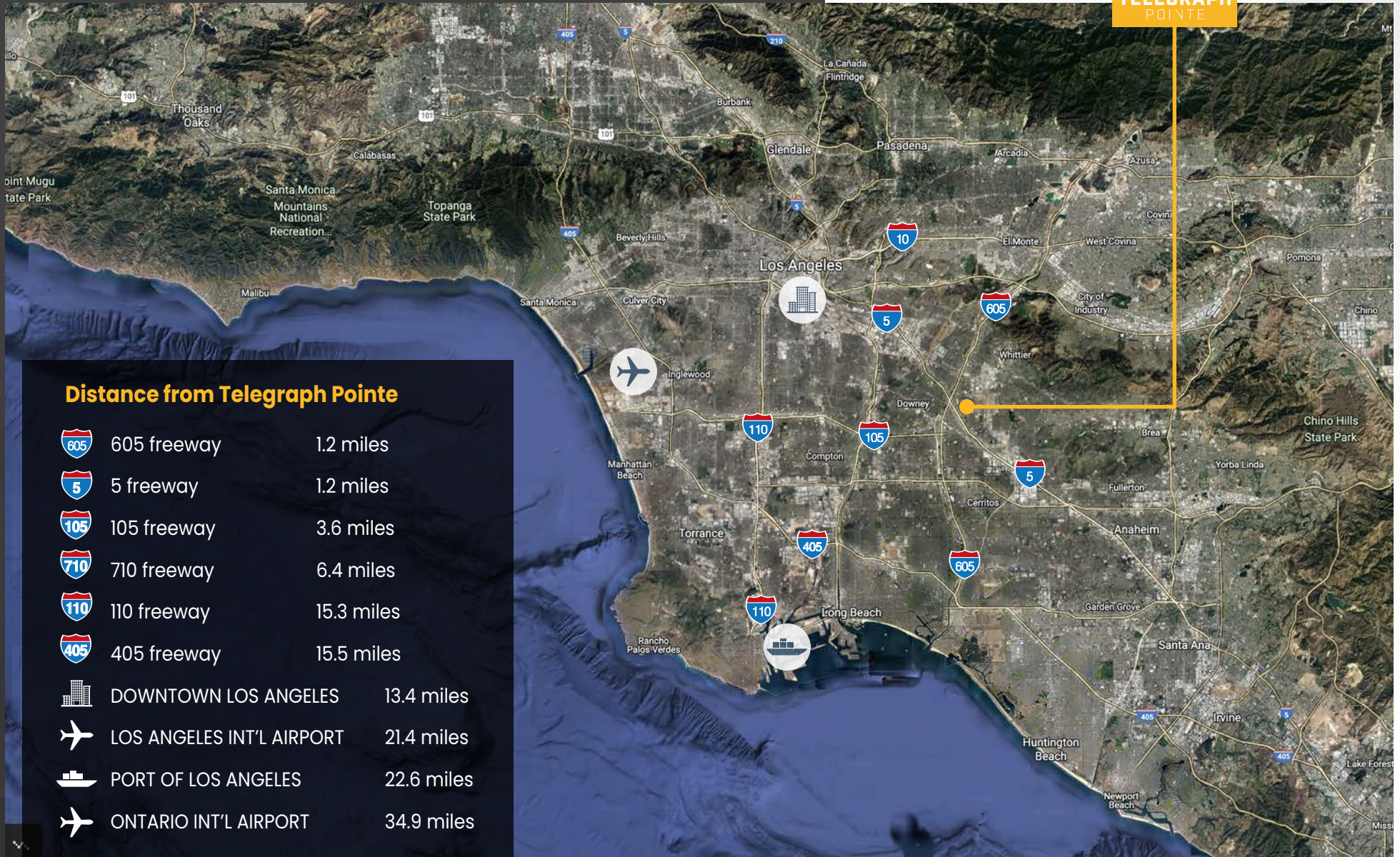
# BRAND NEW CONSTRUCTION!

**10251 SANTA FE SPRINGS ROAD**





# LOCATOR MAP





**For more information, please contact:**

**CONNOR REEVES, SIOR**

*Senior Managing Director*  
t 310-491-2088  
connor.reeves@nmrk.com  
CA RE Lic. #01983477

**JOHN MCMILLAN, SIOR**

*Vice Chairman*  
t 310-491-2048  
john.mcmillan@nmrk.com  
CA RE Lic. #01103292

**JEFF SANITA, SIOR**

*Executive Managing Director*  
t 310-491-2003  
jeff.sanita@nmrk.com  
CA RE Lic. #01242202

**DANNY WILLIAMS, SIOR**

*Executive Managing Director*  
t 310-491-2061  
danny.williams@nmrk.com  
CA RE Lic. #01776416



**ANDREW CONROY**

*Transaction Manager*  
t 310-491-2085  
andrew.conroy@nmrk.com  
CA RE Lic. #02143325

**WILLIAM LU, PE**

*Executive Vice President - Western Region*  
Centris Industrial  
Wlu@CentrisIndustrial.com



CORPORATE LIC. #01355491

**NEWMARK**



The distributor of this communication is performing acts for which a real estate license is required. The information contained herein has been obtained from sources deemed reliable but has not been verified, and no guarantee, warranty or representation, either express or implied, is made with respect to such information. Terms of sale or lease and availability are subject to change or withdrawal without notice.