



M E R I D I A N

147 S. CHERRY STREET, SUITE 200 | WINSTON-SALEM, NC 27101 | P 336.722.1986 | F 336.723.3173 | MERIDIANREALTY.COM

Flex Space

162 Hillsdale West Drive

Advance, NC 27006



Free standing all brick building located in Advance and near Bermuda Run. Built as In Flight Gymnasium in 2010, this property features 28' ceilings, break room, multiple offices and a large open office area on the second floor. This flexible floor plan allows for multiple different types of uses. Available August 1, 2024

For more information:

William T. Bartholomew, Jr., CCIM

William@meridianrealty.com

336.480.2335

FOR LEASE: \$8.00 PSF NNN

WWW.MERIDIANREALTY.COM

162 Hillsdale West Drive | Advance, NC 27006

EXTERIOR IMAGES



INTERIOR IMAGES

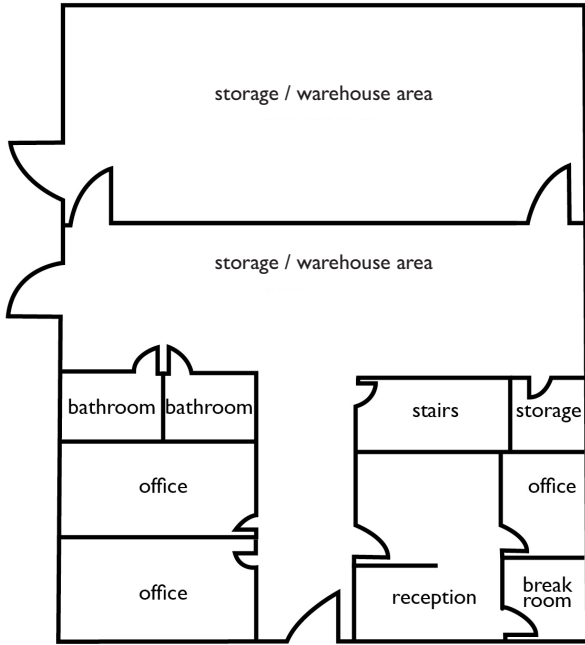


DEMOGRAPHICS

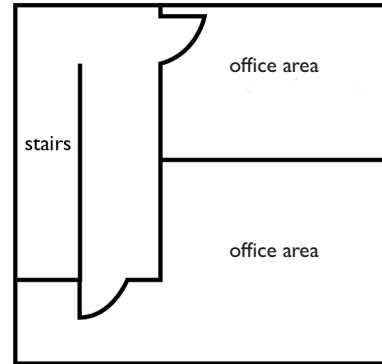
	1mi	3mi	5mi
POPULATION	2,172	12,039	30,708
HOUSEHOLDS	820	4,940	12,233
HOUSEHOLD INCOME	\$178,883	\$144,926	\$130,007

FLOORPLAN

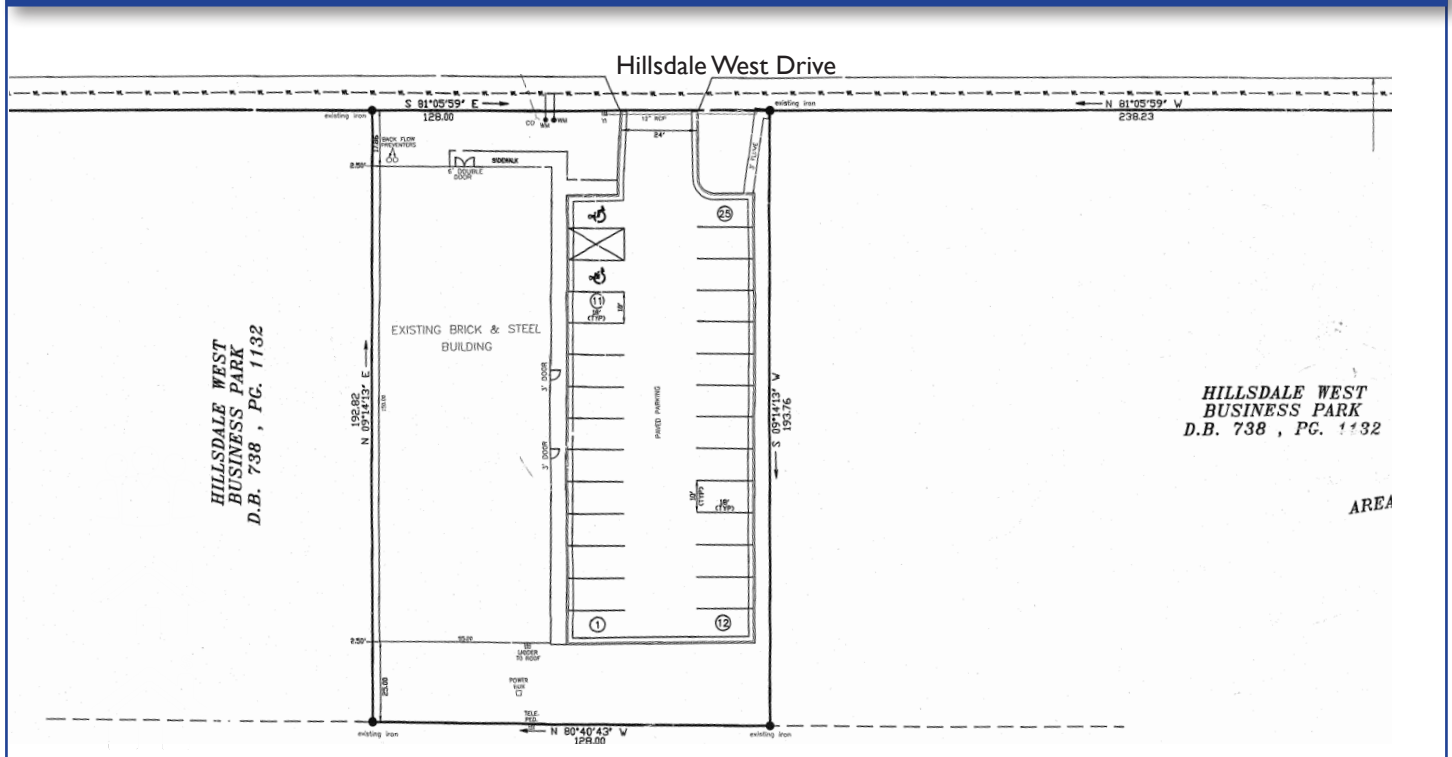
First Floor



Second Floor



SITE PLAN - PARKING



No warranty or representation (express or implied) is made as to the accuracy or completeness of the information set forth herein. All information is submitted subject to errors, omissions, change of price, prior lease or sale, and withdrawal without notice. All marketing material produced by the Meridian Realty Group is proprietary. Any reproduction is expressly prohibited.



THE MERIDIAN REALTY GROUP | 147 S. CHERRY STREET, SUITE 200 | WINSTON-SALEM, NC 27101

P 336.722.1986 | F 336.723.3173

AERIAL



Property Details

- 10,850± SF
- Zoned GB
- Former In Flight Gymnasium
- For Lease: \$8.00 PSF NNN
- Available August 1, 2024



No warranty or representation (express or implied) is made as to the accuracy or completeness of the information set forth herein. All information is submitted subject to errors, omissions, change of price, prior lease or sale, and withdrawal without notice. All marketing material produced by the Meridian Realty Group is proprietary. Any reproduction is expressly prohibited.



THE MERIDIAN REALTY GROUP | 147 S. CHERRY STREET, SUITE 200 | WINSTON-SALEM, NC 27101

P 336.722.1986 | F 336.723.3173