

**Subject Pictures**



Typical Hunting/Recreational Land



New Post Frame Utility Barn



Clubhouse Exterior



Clubhouse Exterior

## Property Alongside Interstate 57

14756 Stardust Rd, Johnston City, IL 62951

**Mandy McNeal Horn**  
Stardust Golf Course  
14756 Stardust Rd, Johnston City, IL 62951  
[mandyhorn@live.com](mailto:mandyhorn@live.com)  
(618) 983-8822

**Subject Pictures**



Typical Hunting/Recreational Land



New Post Frame Utility Barn



Clubhouse Exterior



Clubhouse Exterior

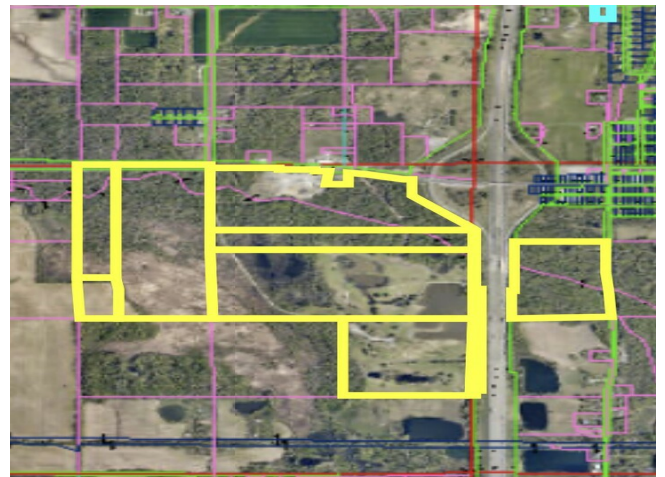
Price:	\$2,500,000
Property Type:	Land
Property Subtype:	Commercial
Proposed Use:	Commercial
Sale Type:	Investment
Total Lot Size:	283.31 AC
No. Lots:	1

# Property Alongside Interstate 57

\$2,500,000

This property at 14756 Stardust Rd offers a prime investment opportunity with versatile potential for growth off of busy interstate 57. Set on a large, scenic lot, it's ideal for recreational, commercial, or development use. Located near Johnston City's main amenities, it provides excellent visibility and accessibility, making it perfect for entrepreneurs or investors...

- Large and versatile, ideal for recreational or commercial development.
- Easy access from major roads, enhancing visibility and convenience.
- Surrounded by peaceful landscapes, perfect for relaxation-focused ventures.



**Subject Pictures**



Golf Course Acreage



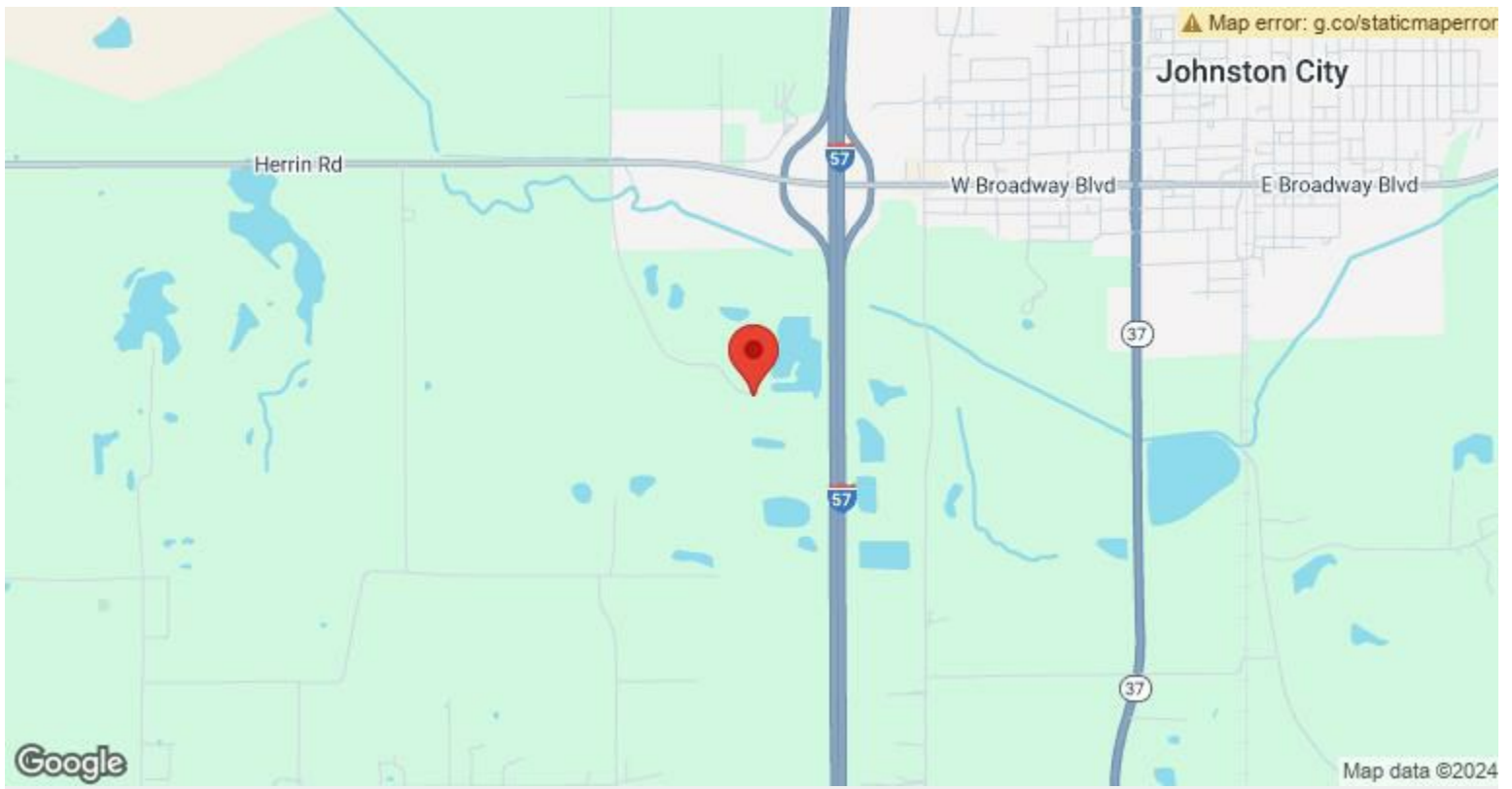
Golf Course Acreage



Covered Pavilion



Subject Golf Course Acreage



## 14756 Stardust Rd, Johnston City, IL 62951

This property at 14756 Stardust Rd offers a prime investment opportunity with versatile potential for growth off of busy interstate 57. Set on a large, scenic lot, it's ideal for recreational, commercial, or development use. Located near Johnston City's main amenities, it provides excellent visibility and accessibility, making it perfect for entrepreneurs or investors looking to create a recreational space, event venue, or commercial site. The expansive grounds allow for creative, profitable ventures, from golf course expansions to multi-purpose recreational facilities, in a peaceful, accessible setting. This would be ideal land for a large retreat event center or meeting space with potential for expansion.

# Property Photos

## Subject Pictures



Typical Golf Course Acreage



Typical Water Feature



Interstate 57 Frontage



Interstate 57 Frontage

Building Photo

## Subject Pictures



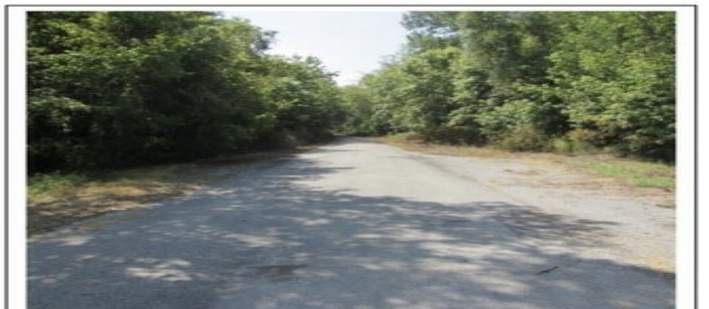
Subject Exterior Signage



Highway Frontage



Highway Frontage



Entrance Road View

Building Photo

# Property Photos

