



**COLDWELL BANKER
COMMERCIAL**
GEORGE REALTY



Brand New Construction Office Space for Lease

888 S Brea Canyon Road, Diamond Bar, CA 91789

RICHARD WANG | Lic. 02078217

Direct 310 739 6788 | richard.hsieh.wang@gmail.com



COLDWELL BANKER

**GEORGE
REALTY**

This document has been prepared by Coldwell Banker for advertising and general information only. Coldwell Banker makes no guarantees, representations or warranties of any kind, expressed or implied, regarding the information including, but not limited to, warranties of content, accuracy and reliability. Any interested party should undertake their own inquiries as to the accuracy of the information. Colliers International excludes unequivocally all inferred or implied terms, conditions and warranties arising out of this document and excludes all liability for loss and damages arising there from. This publication is the copyrighted property of Coldwell Banker and/or its licensor(s). ©2023. All rights reserved.

Interior Photos



COLDWELL BANKER
COMMERCIAL
GEORGE REALTY



Property Highlights

- 3 Office Units Available For Lease
- Lease Rate Starts at \$2.50/NNN/SF
- Adjacent to FWY60 & FWY57
- Freeway 60 Exposure (429,824 V.P.D)

RICHARD WANG | Lic. 02078217

Direct 310 739 6788 | richard.hsieh.wang@gmail.com



COLDWELL BANKER | **GEORGE REALTY**

This document has been prepared by Coldwell Banker for advertising and general information only. Coldwell Banker makes no guarantees, representations or warranties of any kind, expressed or implied, regarding the information including, but not limited to, warranties of content, accuracy and reliability. Any interested party should undertake their own inquiries as to the accuracy of the information. Colliers International excludes unequivocally all inferred or implied terms, conditions and warranties arising out of this document and excludes all liability for loss and damages arising there from. This publication is the copyrighted property of Coldwell Banker and/or its licensor(s). ©2023. All rights reserved.

Building Interior Photos



COLDWELL BANKER
COMMERCIAL
GEORGE REALTY



Demographics

1 MILE

3 MILE

5 MILE

• Population	6,871	96,333	222,183
• Ave H.H Income	\$120,990	\$117,571	\$110,990
• Median Age	43	42.2	39.7

RICHARD WANG | Lic. 02078217

Direct 310 739 6788 | richard.hsieh.wang@gmail.com



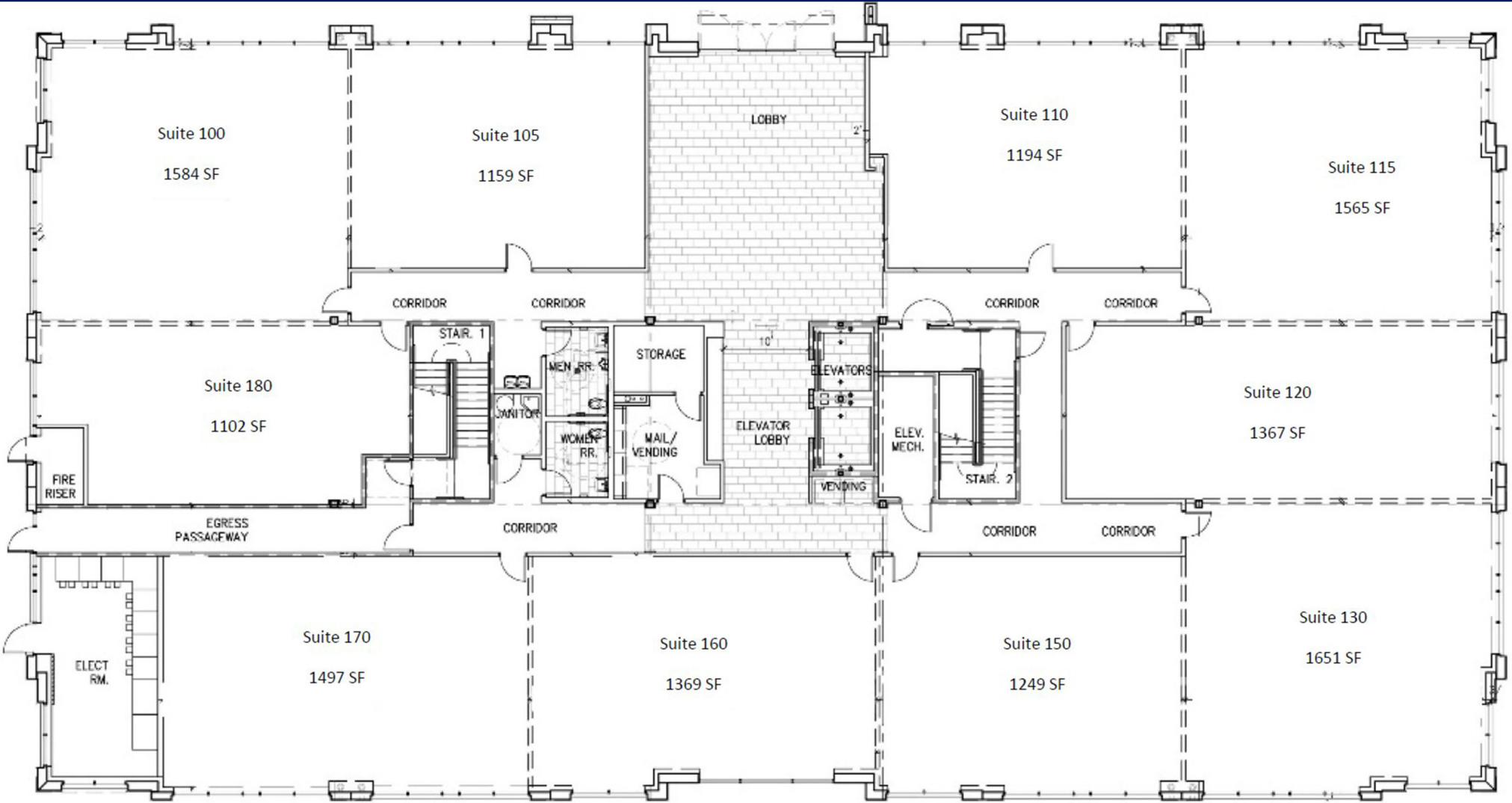
COLDWELL BANKER

GEORGE REALTY

Floor Plan



COLDWELL BANKER
COMMERCIAL
GEORGE REALTY



RICHARD WANG | Lic. 02078217
Direct 310 739 6788 | richard.hsieh.wang@gmail.com



COLDWELL BANKER | **GEORGE REALTY**

This document has been prepared by Coldwell Banker for advertising and general information only. Coldwell Banker makes no guarantees, representations or warranties of any kind, expressed or implied, regarding the information including, but not limited to, warranties of content, accuracy and reliability. Any interested party should undertake their own inquiries as to the accuracy of the information. Colliers International excludes unequivocally all inferred or implied terms, conditions and warranties arising out of this document and excludes all liability for loss and damages arising there from. This publication is the copyrighted property of Coldwell Banker and/or its licensor(s). ©2023. All rights reserved.