



FOR SALE

±4.5 ACRES – Rowlett urban Development

- Call For Price
- Near Downtown Rowlett
- Excellent Visiblity

- 5 miles away from Sapphire Bay
- Near Dart Blue Light Rail
- Future Mixed-Use Development

AREA RETAILERS



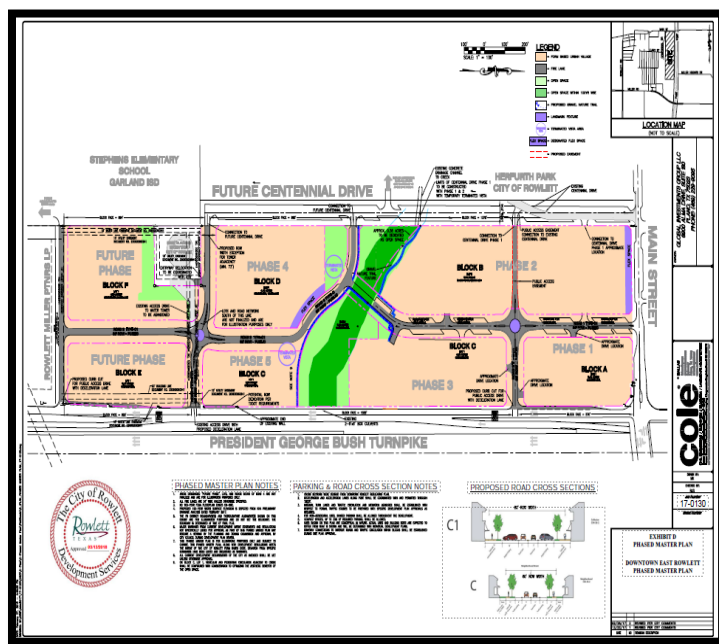
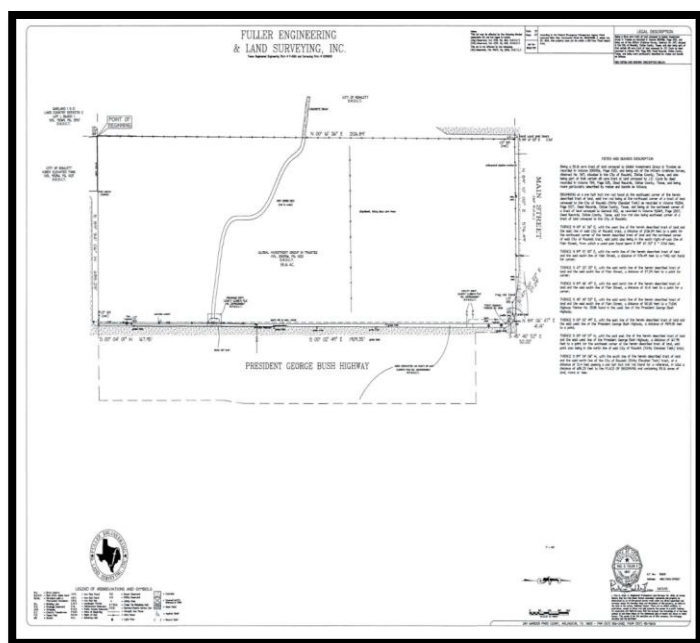
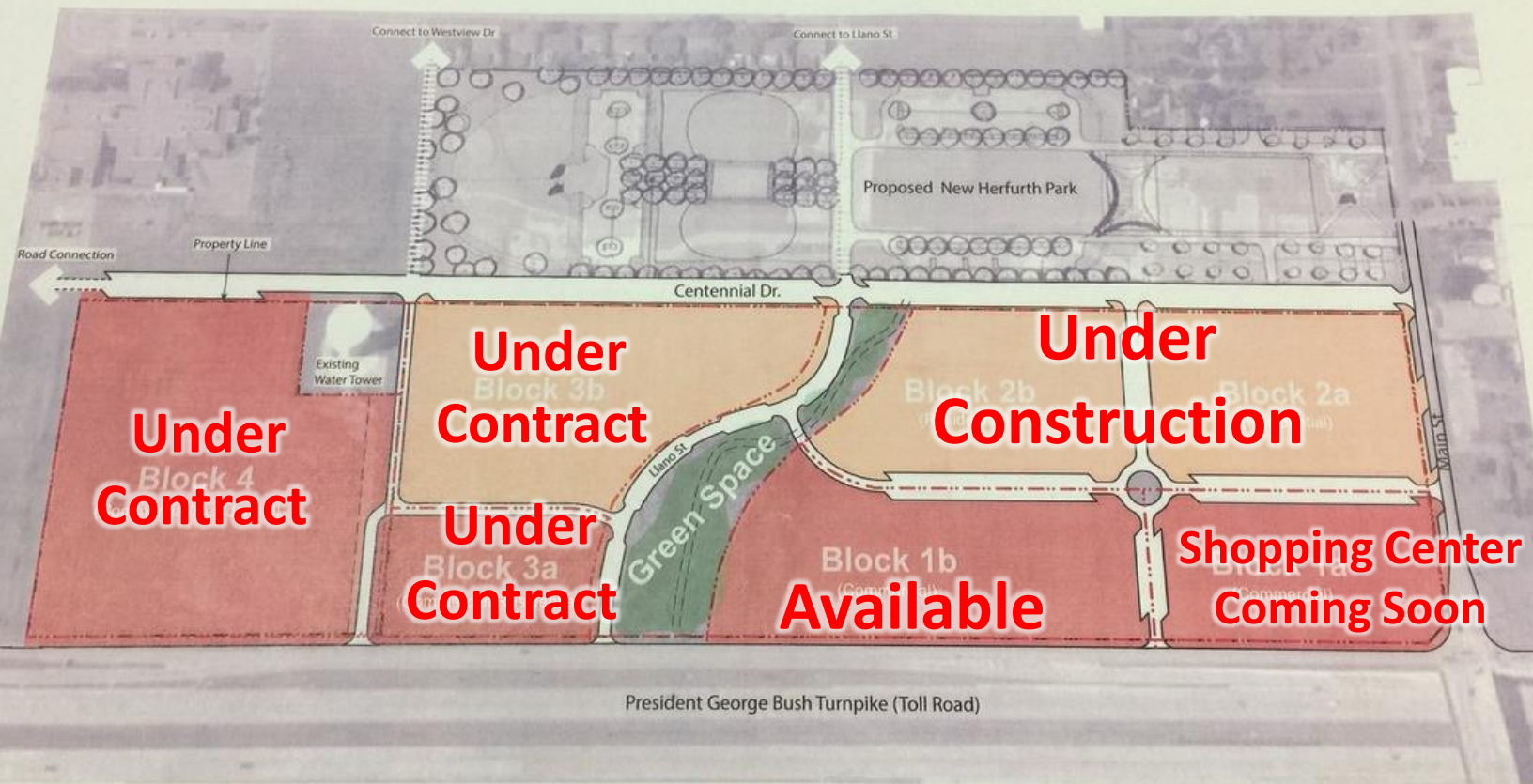
ROYAL REALTY ADVISORS

DAVID NAJAFI

469.229.9000

dnajafi@21legacy.com

The information contained herein has been secured from sources deemed reliable. However, Stonewood International, or its associated companies, employees, or representatives make no guarantees, warranties, or representations as to the completeness or accuracy thereof. References to square footage or age are approximate only, changes of price, prior sale or lease or withdrawal without notice. The buyer/Lessee must verify all the information contained herein and bear all risks for any inaccuracies. Stonewood International LLC, which provides real estate brokerage services, is sponsored by Royal real estate Inc and is licensed in Texas.



ROYAL REALTY ADVISORS

DAVID NAJAFI

469.229.9000

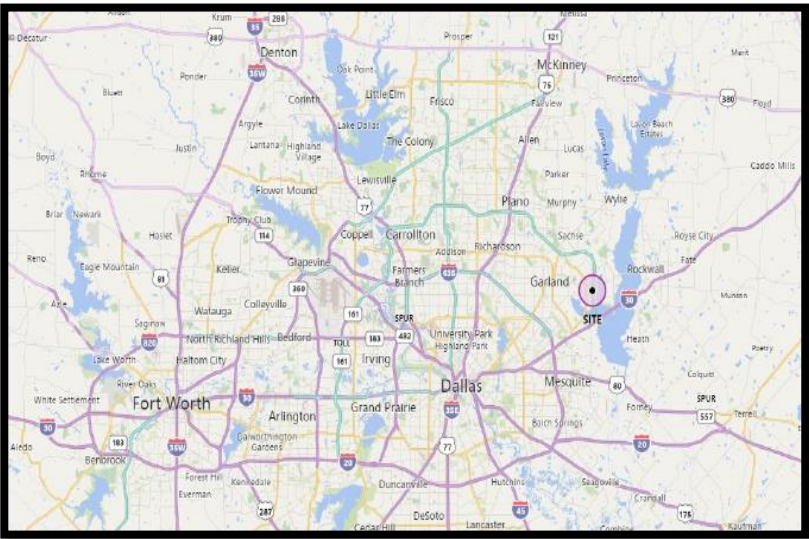
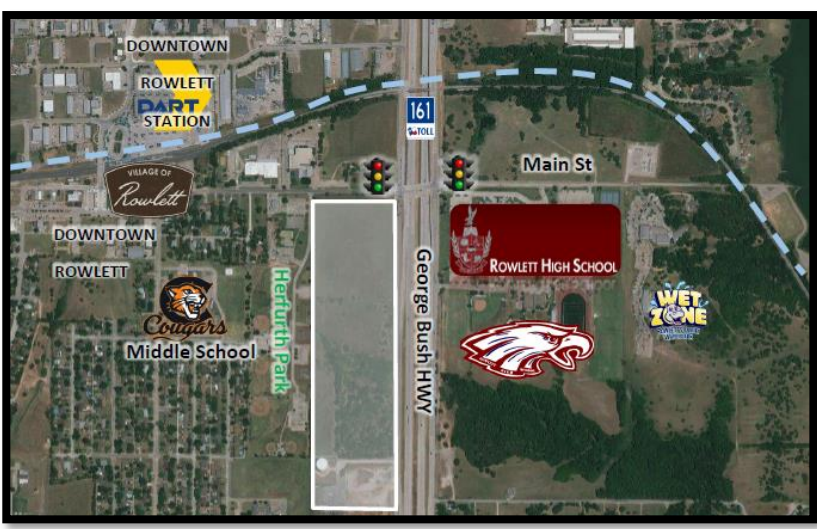
dnajafi@21legacy.com

The information contained herein has been secured from sources deemed reliable. However, Stonewood International, or its associated companies, employees, or representatives make no guarantees, warranties, or representations as to the completeness or accuracy thereof. References to square footage or age are approximate only, changes of price, prior sale or lease or withdrawal without notice. The buyer/Lessee must verify all the information contained herein and bear all risks for any inaccuracies. Stonewood International LLC, which provides real estate brokerage services, is sponsored by Royal real estate Inc and is licensed in Texas.

DEMOGRAPHIC - 2021

1 MILES RADIUS

Est Population	3,431
Est. Households	1,193
Est. Avg. HH Income	\$103,539

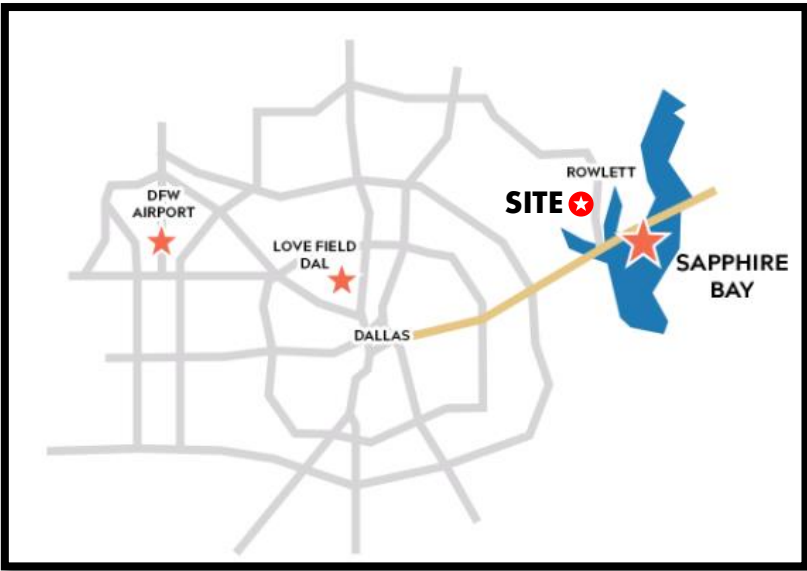


3 MILES RADIUS

Est Population	64,838
Est. Households	21,497
Est. Avg. HH Income	\$104,794

5 MILES RADIUS

Est Population	192,305
Est. Households	62,328
Est. Avg. HH Income	\$87,348



ROYAL REALTY ADVISORS

DAVID NAJAFI
469.229.9000

dnajafi@21legacy.com

The information contained herein has been secured from sources deemed reliable. However, Stonewood International , or its associated companies, employees, or representatives make no guarantees, warranties, or representations as to the completeness or accuracy thereof. References to square footage or age are approximate only, changes of price, prior sale or lease or withdrawal without notice. The buyer/Lessee must verify all the information contained herein and bear all risks for any inaccuracies . Stonewood International LLC, which provides real estate brokerage services, is sponsors by Royal real estate Inc and is licensed in Texas.