

SPACE FEATURES:

- Historic 2-Story Office Building Located at the Signalized Intersection of North and King Streets
- Adjacent to Downtown Nacogdoches and the Nacogdoches Hospital District Campus
- Large Parking Area Behind Property with Multiple Curb Cuts to King St
- Mix of Private Offices and Meeting Rooms

**FOR MORE INFORMATION
PLEASE CONTACT:**

Jonathan Dunn
713-319-4467
jdunn@cpre.com

CPRE Commercial
3505 North Street
Nacogdoches, TX 75965
(936)564-2622

**PREMISES:****FIRST FLOOR**

- + Suite 1 (285 SF): \$835.00/MTH
- + Suite 2 (420 SF): \$1,225.00/MTH
- + Suite 3 (405 SF): \$1,185.00/MTH
- + Suite 4 (285 SF): \$835.00/MTH
- + Suite 5 (315 SF): LEASED

SECOND FLOOR

- + Suite 6 (315 SF): \$855.00/MTH
- + Suite 7 (230 SF): \$625.00/MTH
- + Suite 8 (115 SF): \$400.00/MTH
- + Suite 9 (250 SF): LEASED
- + Suite 10 (355 SF): \$985.00/MTH
- + Suite 11 (250 SF): \$675.00/MTH

AVAILABILITY:

2/1/25

LEASE TERM:

Negotiable

GROSS RENTAL RATE:

Rental Rates Include all utilities other than connectivity

PARKING:

16 Parking Spaces (3.25/1,000 SF)

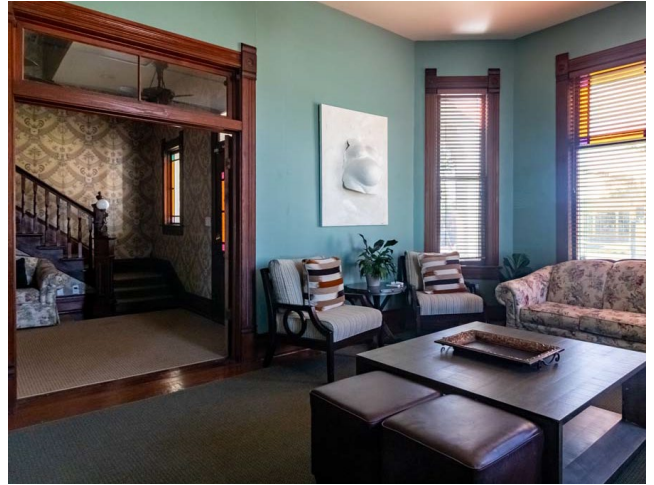
PROPERTY HIGHLIGHTS

- + All Offices Have Windows to the Exterior for Natural Light
- + (2) Common Area Restrooms and Kitchenette Upstairs
- + Ample Parking
- + Great Visibility to High North Street Traffic Counts of ~23,000 VPD in front of Property

FOR LEASE

816 North Street Executive Offices
NACOGDOCHES, TX

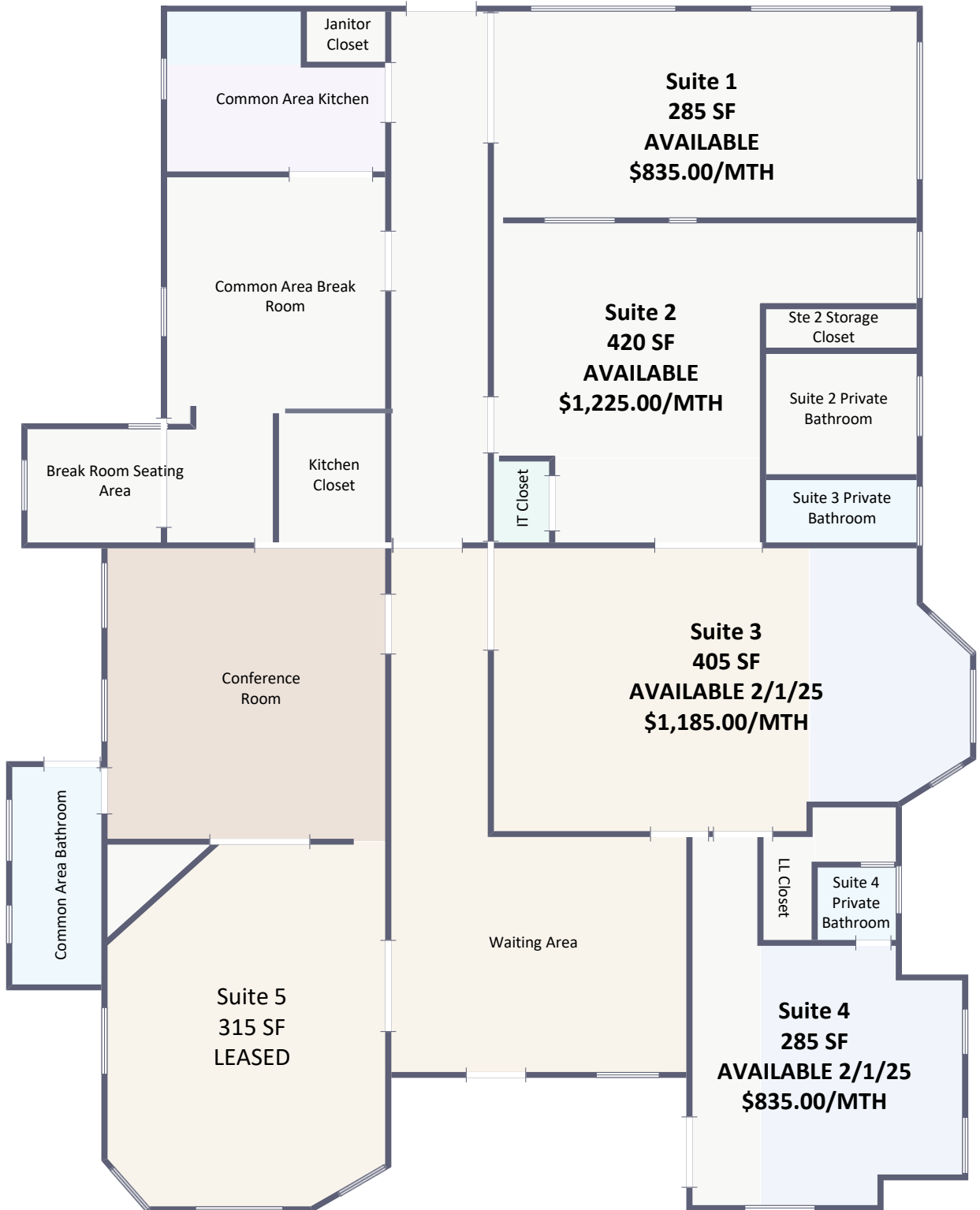
CPRE
COMMERCIAL



2025 CPRE Commercial This information has been obtained from sources deemed to be reliable. We have not verified it and make no guarantee, warranty or representation about it. Any projections, assumptions or estimates used are for example only and do not represent the current or future performance of the property. You and your advisors should conduct a careful, independent investigation of the property to determine to your satisfaction the suitability of the property for your needs. Photos herein are the property of their respective owners and use of these images without the express written consent of the owner is prohibited.

First Floor Office Rates

816 North St



Second Floor Office Rates

816 North St



FOR LEASE

816 North Street Executive Offices
NACOGDOCHES, TX

CPRE
COMMERCIAL



2025 CPRE Commercial This information has been obtained from sources deemed to be reliable. We have not verified it and make no guarantee, warranty or representation about it. Any projections, assumptions or estimates used are for example only and do not represent the current or future performance of the property. You and your advisors should conduct a careful, independent investigation of the property to determine to your satisfaction the suitability of the property for your needs. Photos herein are the property of their respective owners and use of these images without the express written consent of the owner is prohibited.