

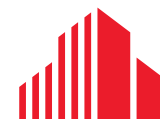
2,952 SF
AVAILABLE

FOR LEASE \$18/SF GROSS

GARDENS PLAZA SHOPPING CENTER

10981 S US HIGHWAY 1

PORT ST LUCIE, FL 34952



CUSHMAN &
WAKEFIELD

10981 S US HIGHWAY 1

PORT ST LUCIE, FL 34952

Property Details

Now available along highly trafficked US Highway 1 in Port St. Lucie, this 2,952 square foot retail space offers excellent visibility and exposure with an average daily traffic count of 47,500 vehicles per day. The space is located within an established plaza anchored by a national paint retailer and complemented by auto care supply and service-oriented tenants, creating strong daily traffic and synergy. This is an ideal opportunity for retail, service, or showroom users seeking a prominent location in a growing Treasure Coast market.

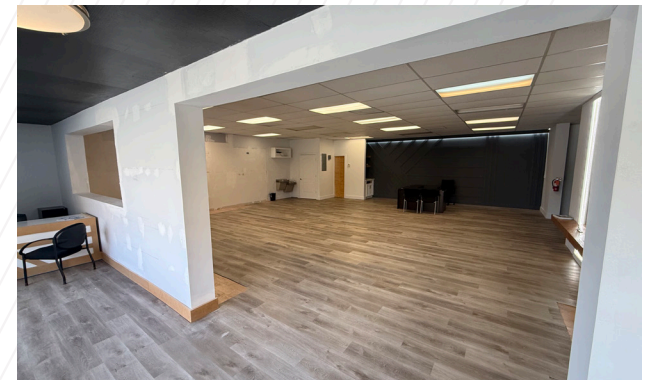
Available Space:	2,952 SF
Lease Rate:	\$18 Gross
Zoning:	Commercial General
Property Type:	Retail
Jurisdiction:	Saint Lucie County
Traffic Count:	47,500 AADT




10981 S US HIGHWAY 1

PORT ST LUCIE, FL 34952



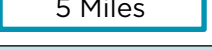
Property Photos



2025 DEMOGRAPHICS

 10981 S US Highway 1, Port St Lucie, FL 34952

DISTANCE

-  1 Mile
-  3 Miles
-  5 Miles

Area Demographics

Population

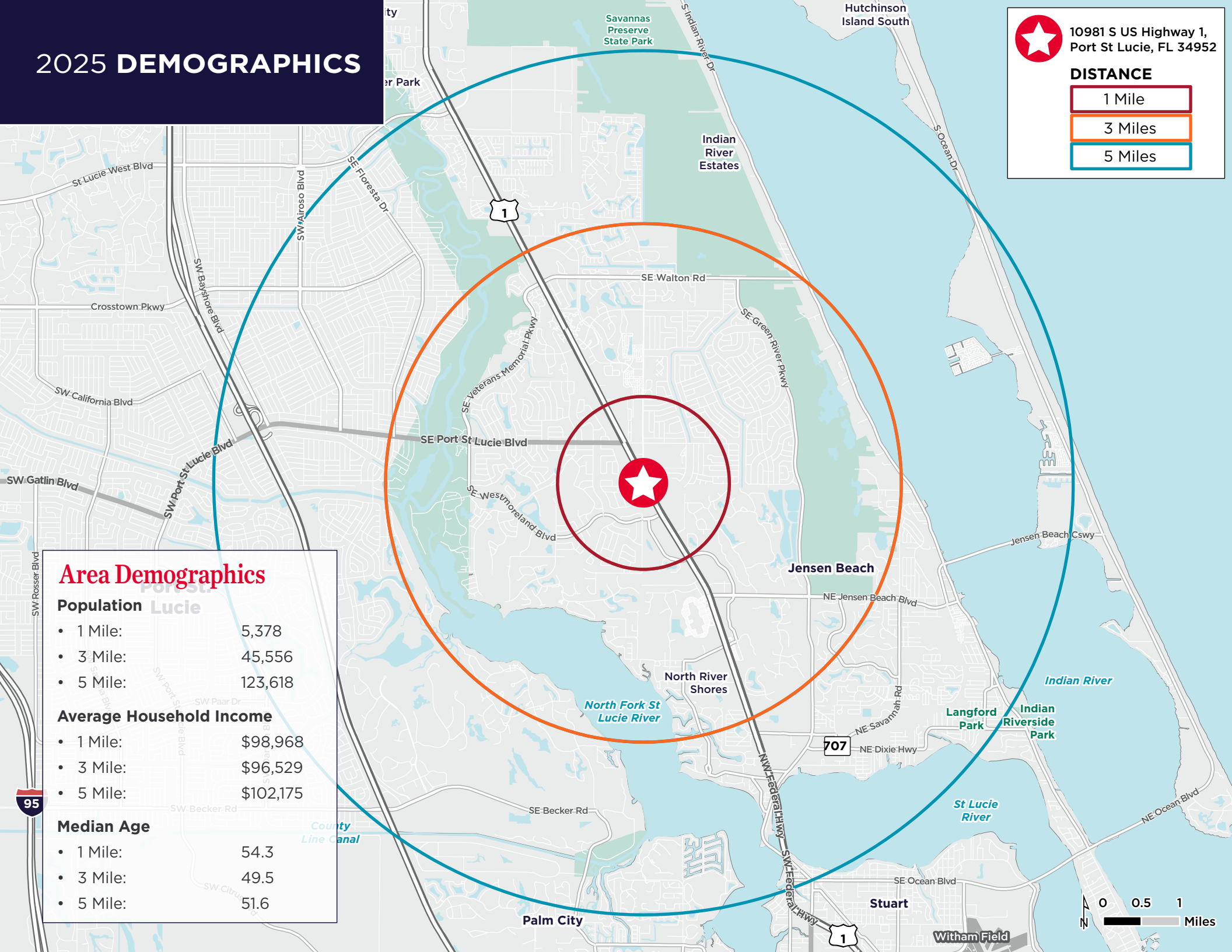
- 1 Mile: 5,378
- 3 Mile: 45,556
- 5 Mile: 123,618

Average Household Income

- 1 Mile: \$98,968
- 3 Mile: \$96,529
- 5 Mile: \$102,175

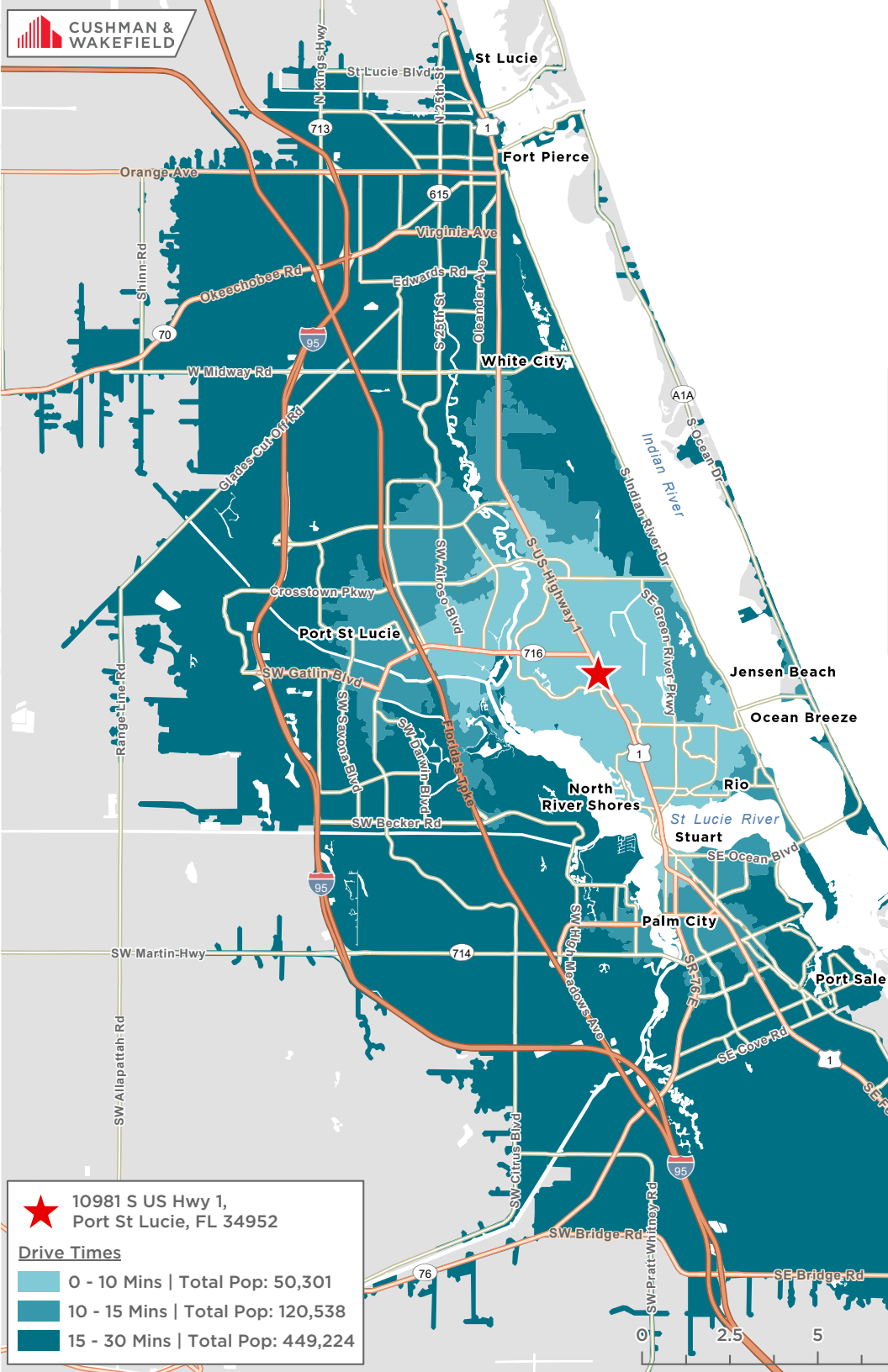
Median Age

- 1 Mile: 54.3
- 3 Mile: 49.5
- 5 Mile: 51.6



10981 S US HIGHWAY 1

PORT ST LUCIE, FL 34952



2025 DRIVE TIME		
10 MINUTE	15 MINUTE	30 MINUTE
50,301 POPULATION	120,538 POPULATION	449,224 POPULATION
\$99,865 AVG HH INCOME	\$92,850 AVG HH INCOME	\$104,258 AVG HH INCOME

★ 10981 S US Hwy 1, Port St Lucie, FL 34952

Drive Times

- 0 - 10 Mins | Total Pop: 50,301
- 10 - 15 Mins | Total Pop: 120,538
- 15 - 30 Mins | Total Pop: 449,224



**2,952 SF
AVAILABLE**

**GARDENS
PLAZA**
10999 - 10981

FOR MORE INFORMATION, CONTACT:



DOUGLAS LEGLER
Senior Director
Mobile: +1 772 405 7778
Office: +1 772 678 7606
doug.legler@cushwake.com



CASEY COMBS
Director
Mobile: +1 772 285 8769
Office: +1 772 678 7611
casey.combs@cushwake.com

©2026 Cushman & Wakefield. All rights reserved. The information contained in this communication is strictly confidential. This information has been obtained from sources believed to be reliable but has not been verified. NO WARRANTY OR REPRESENTATION, EXPRESS OR IMPLIED, IS MADE AS TO THE CONDITION OF THE PROPERTY (OR PROPERTIES) REFERENCED HEREIN OR AS TO THE ACCURACY OR COMPLETENESS OF THE INFORMATION CONTAINED HEREIN, AND SAME IS SUBMITTED SUBJECT TO ERRORS, OMISSIONS, CHANGE OF PRICE, RENTAL OR OTHER CONDITIONS, WITHDRAWAL WITHOUT NOTICE, AND TO ANY SPECIAL LISTING CONDITIONS IMPOSED BY THE PROPERTY OWNER(S). ANY PROJECTIONS, OPINIONS OR ESTIMATES ARE SUBJECT TO UNCERTAINTY AND DO NOT SIGNIFY CURRENT OR FUTURE PROPERTY PERFORMANCE. PD-192295-V1

