



**4,000 - 19,695 sf
For Lease**

Dover Town Center

DOVER TOWN CENTER

JOIN FIVE BELOW, ULTA, ROSS, AND OUTBACK STEAKHOUSE
1574 N DUPONT HWY, DOVER DE 19901

THE SPACE

Location **1574 N DuPont Hwy
Dover, DE 19901**

County **Kent County**

HIGHLIGHTS

- ❖ 19,695 SF For Lease - \$20 NNN
- ❖ The property is located on North DuPont Highway in Dover, Delaware, which is a prime retail corridor in the area.
- ❖ High Traffic with over 49,000+/- VPD along N. Dupont Hwy
- ❖ Join National tenants; Petco, Ulta Beauty, Ross, Five Below, Shoe Carnival and Outback Steakhouse
- ❖ Highly Desirable End Cap Space in Excellent Condition
- ❖ 134 feet of building frontage with 2 Large Monument Signs
- ❖ Nearby retailers include major national chains like Walmart, Target, and Home Depot, making it a high-traffic area for shoppers.
- ❖ The area also features convenient amenities like banks, gas stations, and grocery stores, catering to the daily needs of residents and visitors.



POPULATION

1.00 MILE	3.00 MILE	5.00 MILE
3,753	36,731	66,557

AVERAGE HOUSEHOLD INCOME

1.00 MILE	3.00 MILE	5.00 MILE
\$76,451	\$83,768	\$86,374

NUMBER OF HOUSEHOLDS

1.00 MILE	3.00 MILE	5.00 MILE
906	13,891	25,147



Charles Rodriguez
Broker
(302) 674-3400
ccrod1@aol.com

R&R Commercial Realty
46 S. State Street, Dover, DE 19901



Dover Town Center

LANE BRYANT carter's
 OUTBACK STEAKHOUSE® ULTA BEAUTY
 five BELOW petco ROSS DRESS FOR LESS®

19,695 sf Available

49,000 VPD

Dover Mall

FURNITURE & More! LOWE'S AÉROPOSTALE
 PINK JCPenney
 OLD NAVY DTLR CLO claire's
 Boscov's DICK'S SPORTING GOODS AMERICAN EAGLE
 Bath Works Jockey's PANDORA Rainbow



Dorms
DSU

DUNKIN'

Wawa



LOWE'S

Chick-fil-A

Dover Commons

CHUCK E. CHEESE BOOT BARN
 PLATO'S CLOSET PAPA JOHN'S

PETSMART

Produce Junction

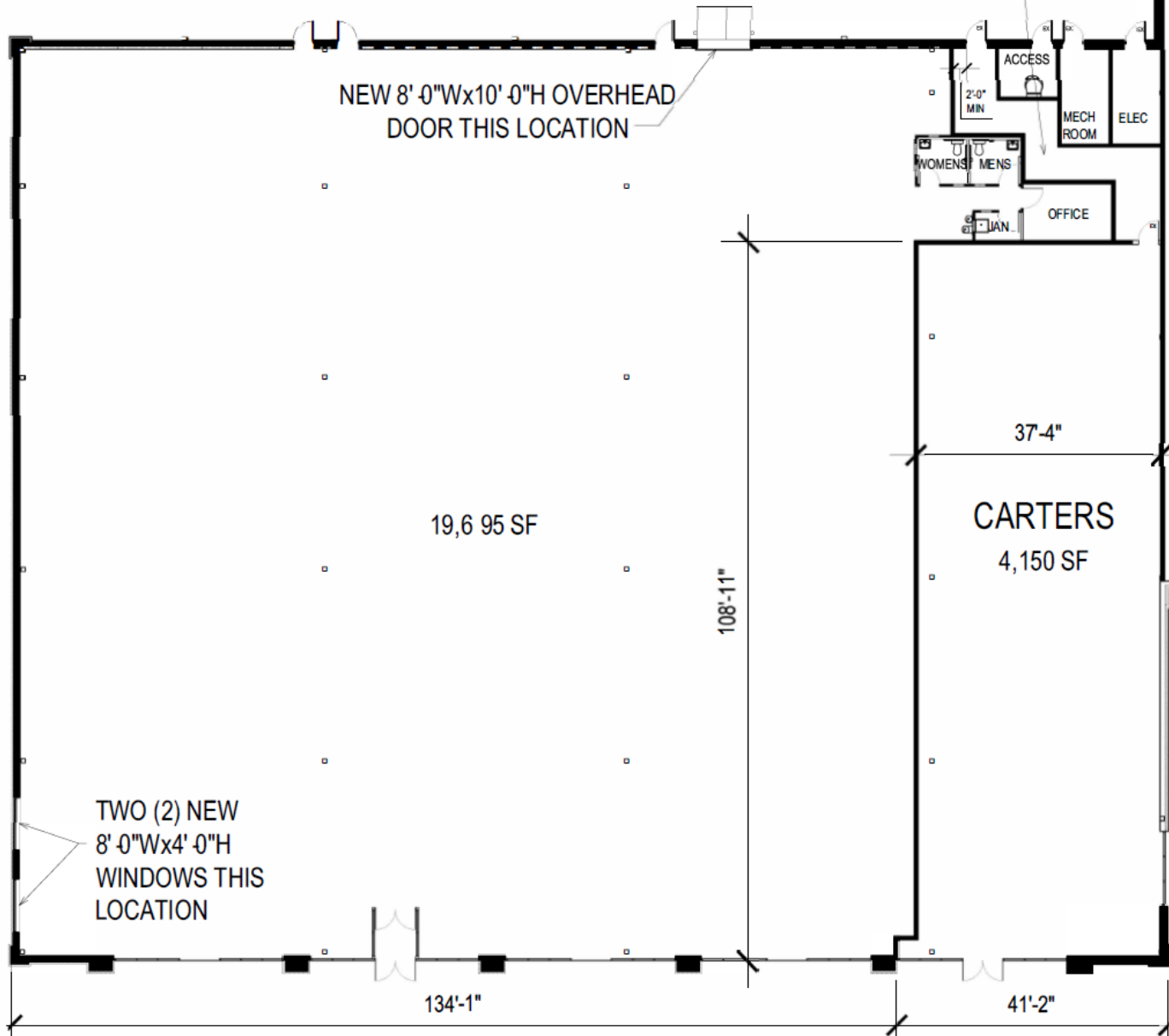


Charles Rodriguez
 Broker
 (302) 674-3400
 ccrd1@aol.com

R&R Commercial Realty
 46 S. State Street, Dover, DE 19901

FLOOR PLAN

CORRIDOR
334 SF



Charles Rodriguez
Broker
(302) 674-3400
ccrod1@aol.com

R&R Commercial Realty
46 S. State Street, Dover, DE 19901



8'x10' Loading Door



For Lease



134' of Building Frontage



Signage at Center Entrance



Ready for Build-Out



Wide Open Space



Signage along Rt 13

DOVER TOWN CENTER

CONFIDENTIALITY and DISCLAIMER

All information contained herein is believed to be accurate, however was obtained from third parties and R & R Commercial Realty, Inc. does not warrant as to the accuracy submitted, subject to changes or modification without notice. Listing Broker represents the sellers interest.



Exclusively Marketed by:

Charles Rodriguez
R&R Commercial Realty
Broker
(302) 674-3400
ccrod1@aol.com



<http://www.randrcommercialrealty.com>

46 S. State Street, Dover, DE 19901

powered by CREOP