

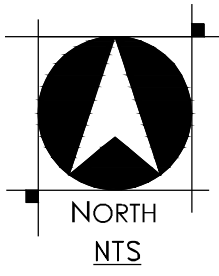
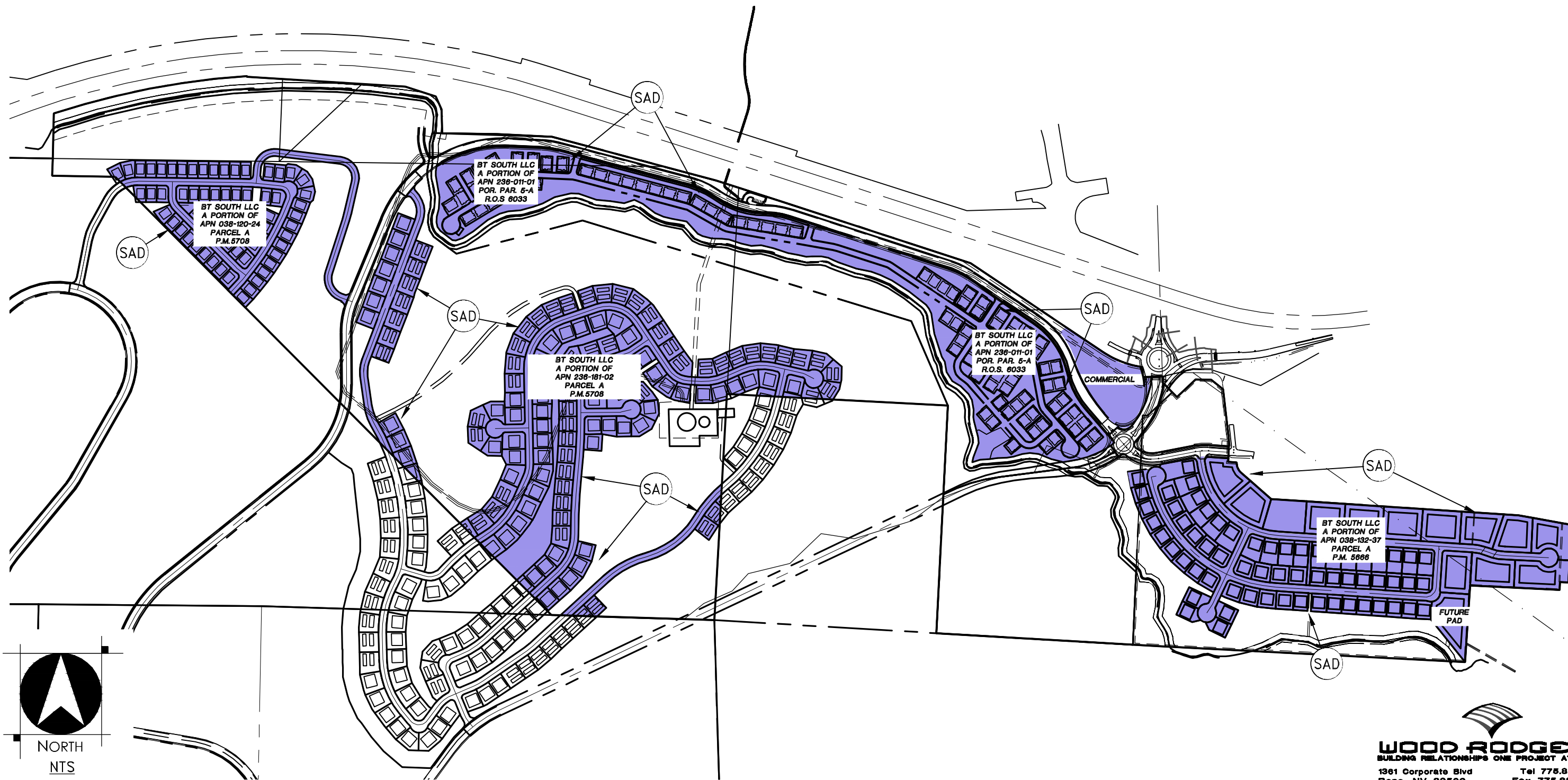
SID BOUNDARY MERIDIAN 120S

RENO, NEVADA
AUGUST 2024

SAD



SAD AREAS



WOOD RODGERS
BUILDING RELATIONSHIPS ONE PROJECT AT A TIME
1361 Corporate Blvd Reno, NV 89502 Tel 775.823.4068 Fax 775.823.4066

J:\Jobs\3173_Reno_Land_Devel_Co\Boomtown_Meridian_120_South_OA_Village_5\Planning\Exhibits\EXH_M120S_OA_SID_BNDY.dwg 8/12/2024 9:55 AM Aron McCulloch