

---

# PrestonBend

REAL ESTATE

---

## FOR SALE

1916 Gallagher Drive, Sherman, Texas



### OVERVIEW

- Total Building Size: 28,712 SF
- Total Lot Size: 3.9976 AC
- Sale Price: Please Inquire
- 100% Climate-controlled
- Multiple dock doors
- Heavy power
- Expansion-ready property

### PROPERTY DETAILS

Exceptional industrial warehouse in the heart of Sherman, Texas, currently operating as an FDA-registered, HACCP-compliant feed manufacturing facility. This well-maintained facility offers climate-controlled warehouse space, 650-amp/480-volt three-phase power and a versatile mix of dock-high and grade-level loading. Recent improvements through 2021 and a functional office build-out make this an ideal owner-user or investment opportunity in a rapidly expanding North Texas market. Contact Broker today for details!



[prestonbendre.com](http://prestonbendre.com)

---

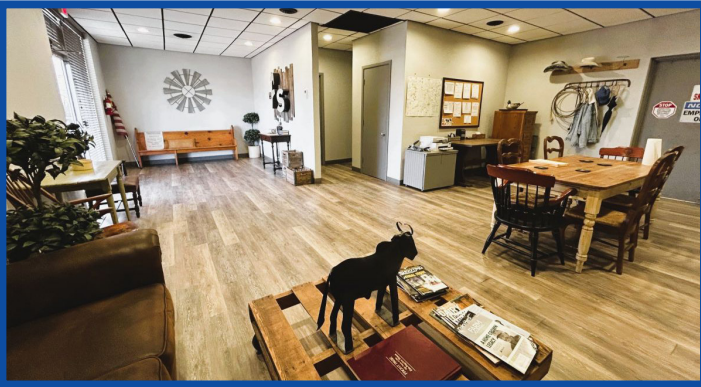
Randy Jay,  
Principal Broker  
972.413.0375  
[randy@prestonbendre.com](mailto:randy@prestonbendre.com)

# PrestonBend

REAL ESTATE

## PROPERTY DETAILS

1916 Gallagher Drive, Sherman, Texas



- 28,712 SF on 3.9976 acres
- Varied clear heights across warehouse sections, ranging 16'-23'
- Modern office build-out
- Drive-in and dock doors:
  - Three grade-level 14' x 14'
  - Two ramped 12' x 12'
  - Three dock-high 10' x 8'
  - One leveler



[prestonbendre.com](http://prestonbendre.com)

Randy Jay,  
Principal Broker  
972.413.0375  
[randy@prestonbendre.com](mailto:randy@prestonbendre.com)

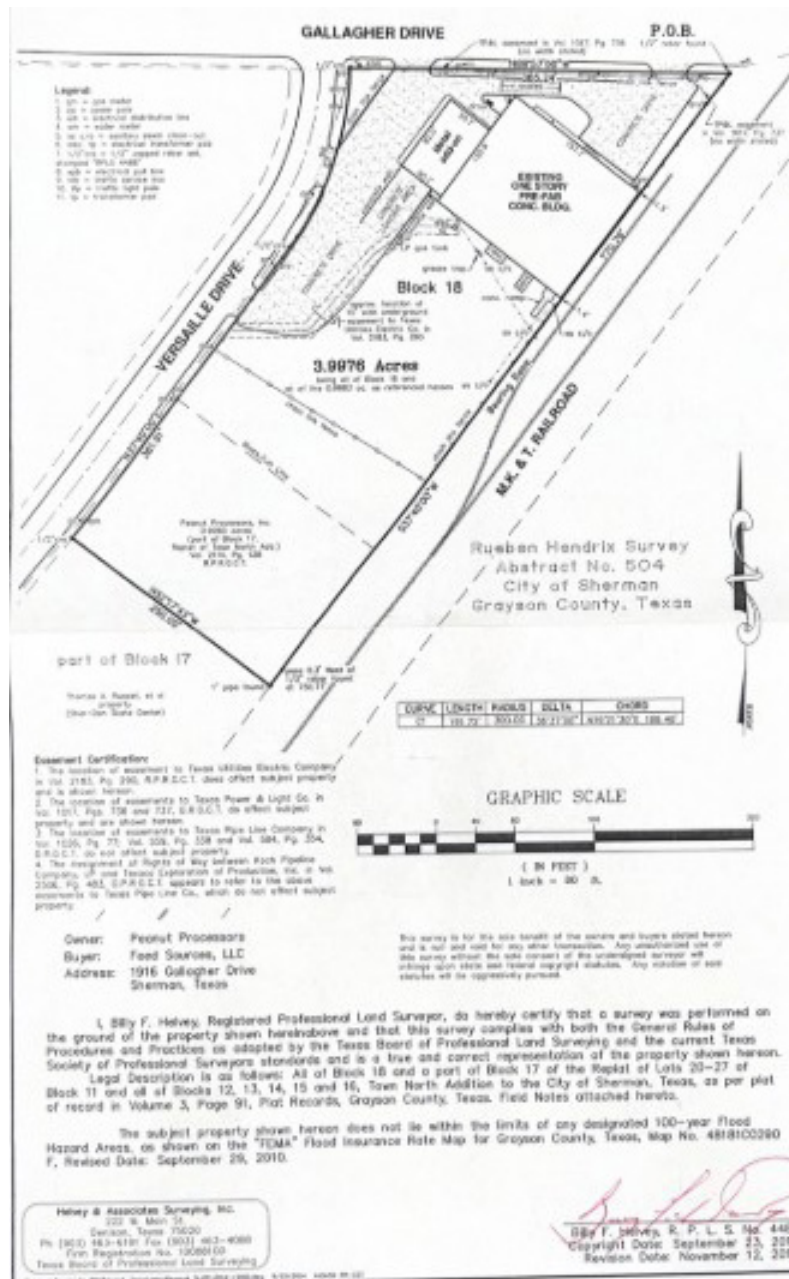


# PrestonBend

REAL ESTATE

## PROPERTY DETAILS

1916 Gallagher Drive, Sherman, Texas



prestonbendre.com

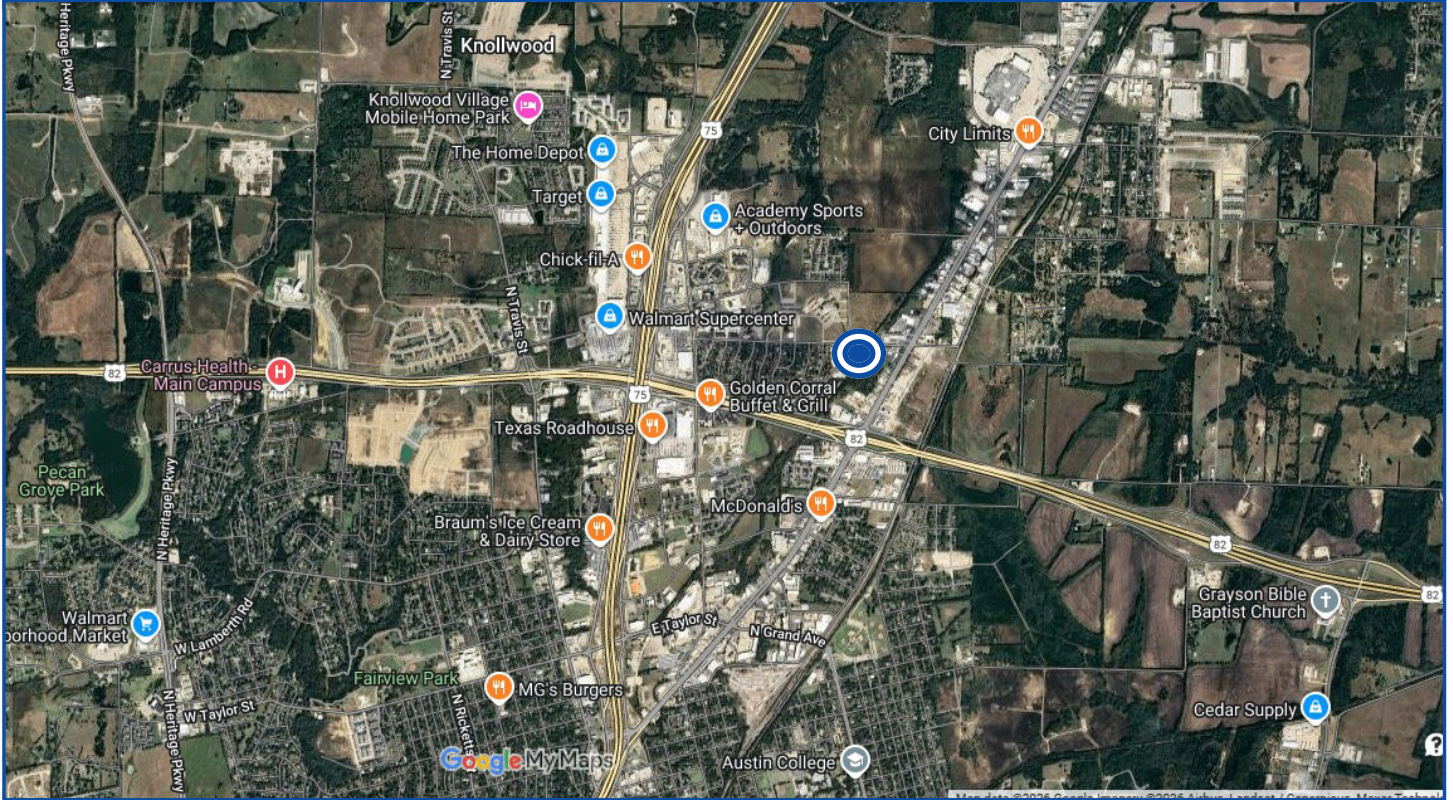
Randy Jay,  
Principal Broker  
972.413.0375  
randy@prestonbendre.com

# PrestonBend

REAL ESTATE

## SITE AERIAL

1916 Gallagher Drive, Sherman, Texas



THE INFORMATION CONTAINED HEREIN HAS BEEN GIVEN TO US BY THE OWNER OF THE PROPERTY OR OTHER SOURCES WE DEEM RELIABLE. WE HAVE NO REASON TO DOUBT ITS ACCURACY, BUT WE DO NOT GUARANTEE IT. ALL INFORMATION SHOULD BE VERIFIED PRIOR TO PURCHASE OR LEASE.



[prestonbendre.com](http://prestonbendre.com)

Randy Jay,  
Principal Broker  
972.413.0375  
[randy@prestonbendre.com](mailto:randy@prestonbendre.com)



---

# PrestonBend

REAL ESTATE

---

## LOCATION INFORMATION

Sherman, Texas



Sherman is a thriving city known for its prestigious institutions like Austin College and Grayson College, a vibrant arts community, and its role as the retail hub of far North Texas and Southern Oklahoma. The city is gaining national attention as a center for advanced manufacturing, with Texas Instruments investing \$30 billion in a four-factory semiconductor campus - set to be the largest electronics production facility in Texas - and GlobiTech building a \$5 billion silicon wafer plant. This unprecedented growth is fueling rapid expansion in housing, retail, and services, with Sherman's population projected to double in the next five years.



[prestonbendre.com](http://prestonbendre.com)

---

Randy Jay,  
Principal Broker  
972.413.0375  
[randy@prestonbendre.com](mailto:randy@prestonbendre.com)