

# REFRIGERATED ±38,789 SF WAREHOUSE AND ±3,600 SF SHOP

8716 SE 15TH ST | MIDWEST CITY, OK 73110



## EXECUTIVE SUMMARY



### OFFERING SUMMARY

Sale Price:	\$2,300,000
Building Size:	42,389 SF
Status:	Vacant
Lot Size:	6.2 Acres
Price / SF:	\$54.26
Year Built:	1978

### PROPERTY OVERVIEW

Creek is pleased to present for sale 8716 SE 15th Street, a ±38,789-square-foot industrial warehouse facility situated on approximately 6.03 acres in Midwest City, Oklahoma. It also has a 3,600 SF ancillary building. Originally constructed in 1978, the property features a well-maintained masonry and brick veneer building with 20-foot clear ceiling heights, a two-story office component totaling approximately 8,556 square feet, and an expansive warehouse footprint of roughly 30,233 square feet suited for distribution, storage, or manufacturing operations. The site includes an additional outbuilding on the west side of the property, a fully paved and fenced yard with ample truck staging and parking, and strong frontage along SE 15th Street. The warehouse bays are fully refrigerated.

camden@creekcre.com

727.946.3333

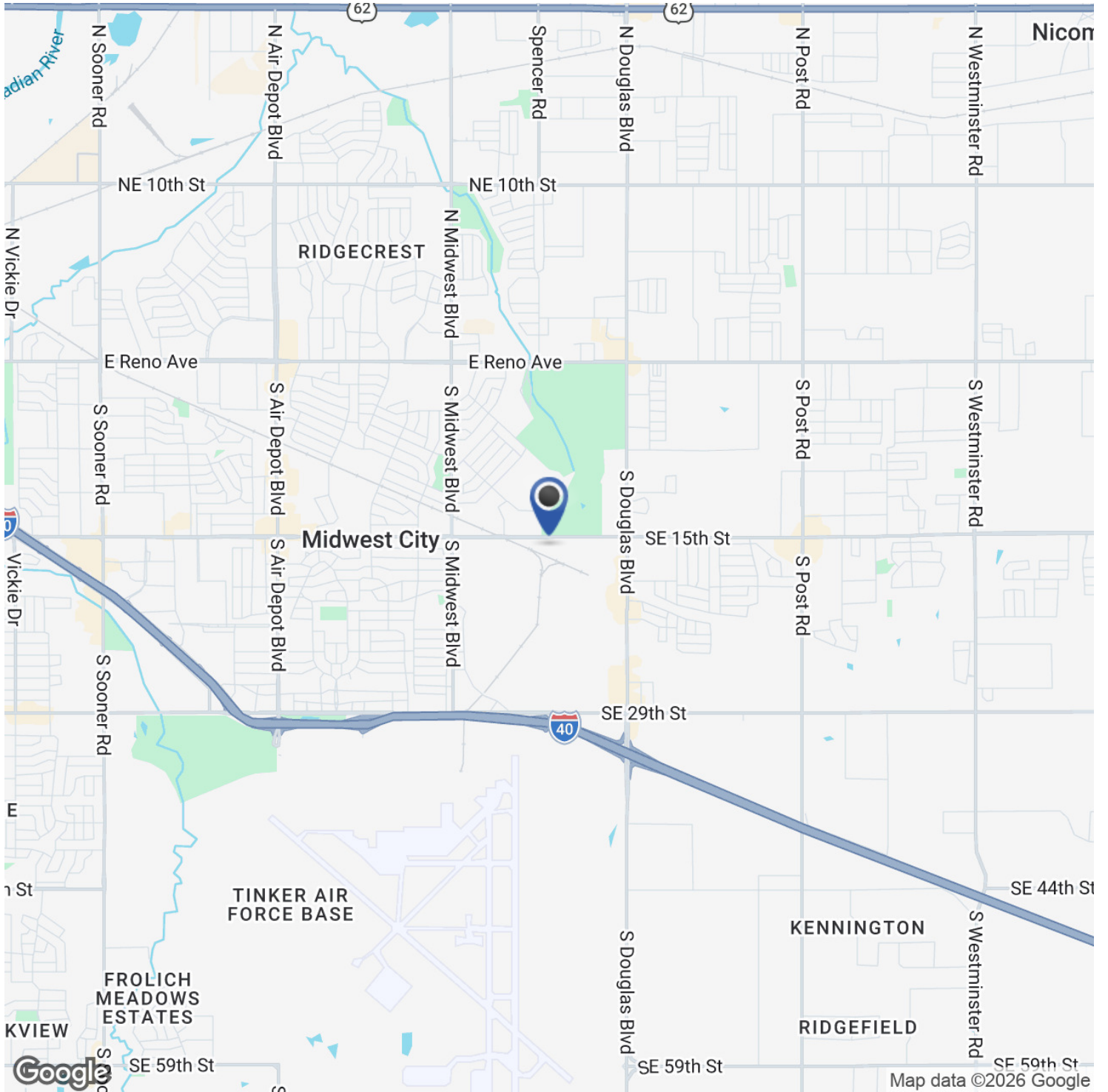
**CAMDEN NIGHTENGALE**

## ADDITIONAL PHOTOS



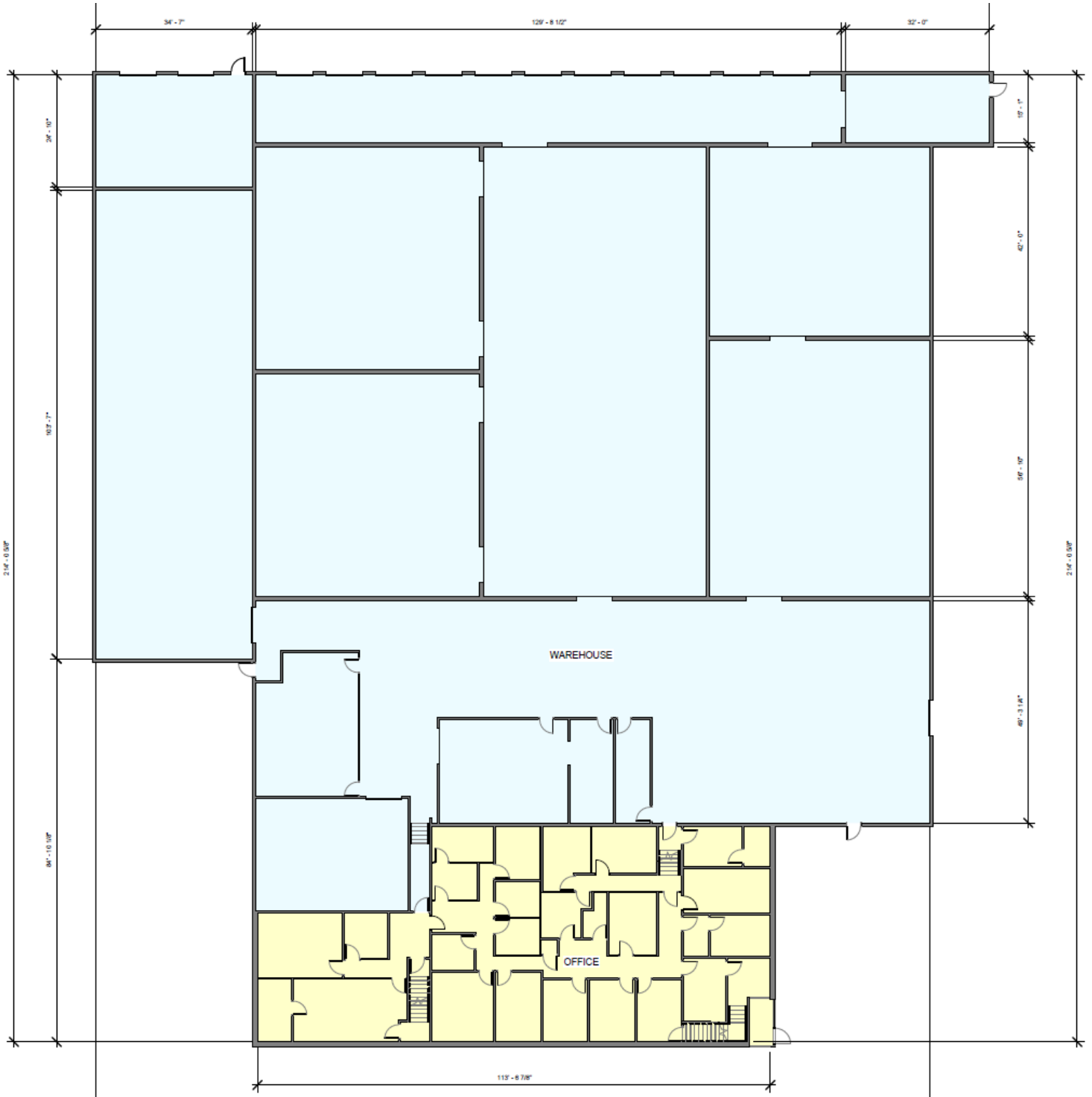
camden@creekcre.com  
727.946.3333  
**CAMDEN NIGHTENGALE**

## LOCATION MAP



camden@creekcre.com  
727.946.3333  
CAMDEN NIGHTENGALE

## ADDITIONAL PHOTOS



camden@creekcre.com  
727.946.3333  
CAMDEN NIGHTENGALE