

# 720

## E STATE HIGHWAY 121

### Lewisville, TX 75067

+/-45,000 SF  
**FOR SALE**



**GARRETT GOLDSTEIN**

**DAVID RODIN**

972-236-7645

[GARRETT@RICHYOUNGCOMPANY.COM](mailto:GARRETT@RICHYOUNGCOMPANY.COM)

[DAVID@RICHYOUNGCOMPANY.COM](mailto:DAVID@RICHYOUNGCOMPANY.COM)



5710 LBJ FREEWAY | SUITE 150

DALLAS, TEXAS 75240

972-236-7645

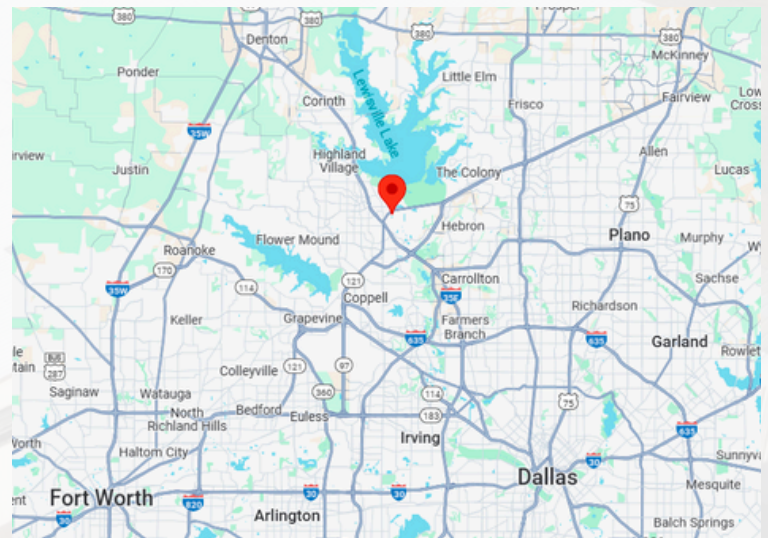
# 720

## E STATE HIGHWAY 121 Lewisville, TX 75067

+/-45,000 SF  
**FOR SALE**

### PROPERTY HIGHLIGHTS

- Office SF: +/-10,000 SF (Recently Renovated)
- 16' Clear Height
- 2 exterior dock doors
- Space is in Excellent Condition
- New ESFR Sprinklers
- New and updated office
- New and upgraded power



**GARRETT GOLDSTEIN**

**DAVID RODIN**

972-236-7645

GARRETT@RICHYOUNGCOMPANY.COM

DAVID@RICHYOUNGCOMPANY.COM



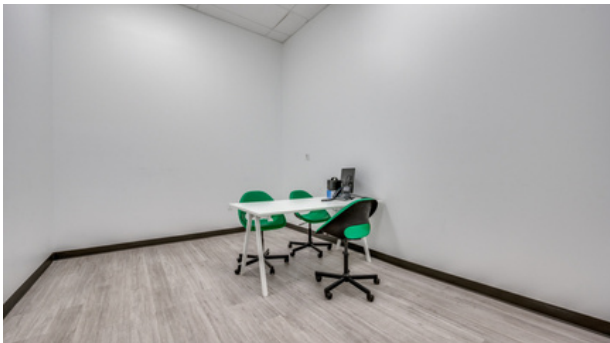
5710 LBJ FREEWAY | SUITE 150  
DALLAS, TEXAS 75240  
972-236-7645

# 720

## E STATE HIGHWAY 121

Lewisville, TX 75067

+/-45,000 SF  
**FOR SALE**



**GARRETT GOLDSTEIN**  
**DAVID RODIN**  
972-236-7645  
GARRETT@RICHYOUNGCOMPANY.COM  
DAVID@RICHYOUNGCOMPANY.COM



5710 LBJ FREEWAY | SUITE 150  
DALLAS, TEXAS 75240  
972-236-7645

# 720

## E STATE HIGHWAY 121

### Lewisville, TX 75067

+/-45,000 SF  
**FOR SALE**



**GARRETT GOLDSTEIN**

**DAVID RODIN**

972-236-7645

[GARRETT@RICHYOUNGCOMPANY.COM](mailto:GARRETT@RICHYOUNGCOMPANY.COM)

[DAVID@RICHYOUNGCOMPANY.COM](mailto:DAVID@RICHYOUNGCOMPANY.COM)



5710 LBJ FREEWAY | SUITE 150

DALLAS, TEXAS 75240

972-236-7645

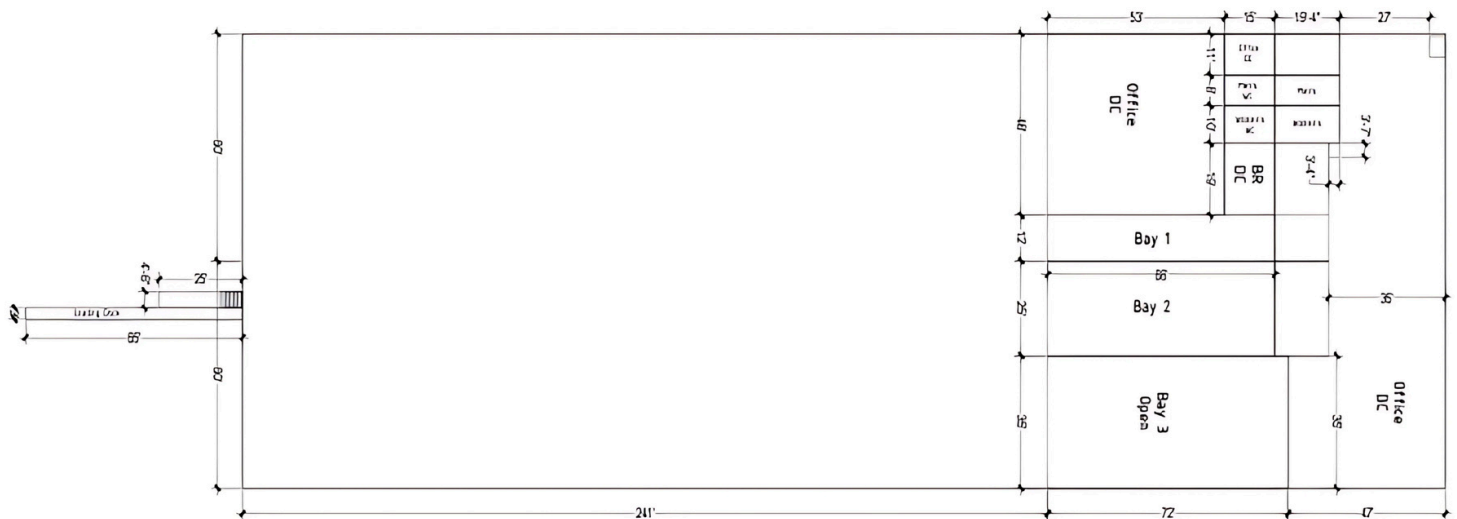
# 720

## E STATE HIGHWAY 121 Lewisville, TX 75067

+/-45,000 SF  
**FOR SALE**

### FLOOR PLAN

Scale 1/16" = 1'-0"



**GARRETT GOLDSTEIN**

**DAVID RODIN**

972-236-7645

GARRETT@RICHYOUNGCOMPANY.COM

DAVID@RICHYOUNGCOMPANY.COM



5710 LBJ FREEWAY | SUITE 150

DALLAS, TEXAS 75240

972-236-7645