

1600 BROMMER ST.

FOR SALE

Santa Cruz, CA

\$1,999,995



Property Highlights

- Preliminary Plans for 78 Unit Affordable Project
- Preliminary Plans for 58 Unit Market Rate Project with 5,000 sq. ft. of Commercial
- 37,418 SF/ .85 Acre Parcel on Transit Corridor

Information presented in this proforma was provided by the Seller. Shoemaker Commercial makes no representation as to the accuracy of the information. Buyer should use diligence investigating the financial feasibility in making a purchase or lease by relying on his or her own professional advisors.



Chris Shoemaker, CCIM

Broker/Owner
 Cell: 831.247.2647
 chris@shoemakercommercial.com
 shoemakercommercial.com
 CalBRE# 01760812



Frank Oliver

Broker/Owner
 Oliver Group
 Cell: 408.472.4700
 frank@olivergroupsv.com
 DRE# 00491292



This brochure has been prepared to provide summary information to prospective purchasers and to establish a preliminary level of interest in the property presented. It does not, however, purport to present all material information regarding the subject property, and it is not a substitute for thorough due diligence investigation. In particular, neither Shoemaker Commercial Real Estate, Inc. nor Chris Shoemaker have made any investigation, and make no warranty or representation with respect to the financial condition or business prospects of any tenant, or any tenant's plans or intentions to continue or renew its occupancy of the subject property. The information contained in this brochure has been obtained from sources we believe to be reliable; however, neither Shoemaker Commercial Real Estate, Inc. nor Chris Shoemaker have conducted any investigation regarding these matters and make no warranty or representation whatsoever regarding the accuracy or completeness of the information provided.

IMPROVEMENTS, SIZE AND BOUNDARIES

Any oral or written representations by Seller or Broker regarding age of improvements, size and square footage of parcel, building, or location of property lines may not be accurate. Apparent boundary line indicators such as fences, hedges, walls or other barriers may not represent the true boundary lines, only a surveyor can determine the actual boundary lines. If any of these issues are important to the Buyer's decision to purchase, then the Buyer should consider investigating the property independently.



Information presented in this proforma was provided by the Seller. Shoemaker Commercial makes no representation as to the accuracy of the information. Buyer should use diligence investigating the financial feasibility in making a purchase or lease by relying on his or her own professional advisors.

shoemakercommercial.com

PROPERTY DESCRIPTION

1600 Brommer St, Santa Cruz, Ca

APN 026-311-22

ADDRESS 1600 Brommer St
Santa Cruz, CA 95062

PARCEL SIZE 37,418 sq. ft. / .85 Acre

CURRENT DESIGNS Two sets of preliminary plans.
One set for a 78 unit affordable project.
A second set for a 58 unit market rate project
with 5,000 sq. ft. of commercial.

ZONING C-1

CONCEPTUAL DRAWINGS Contact listing broker for access to the drawings
for both projects

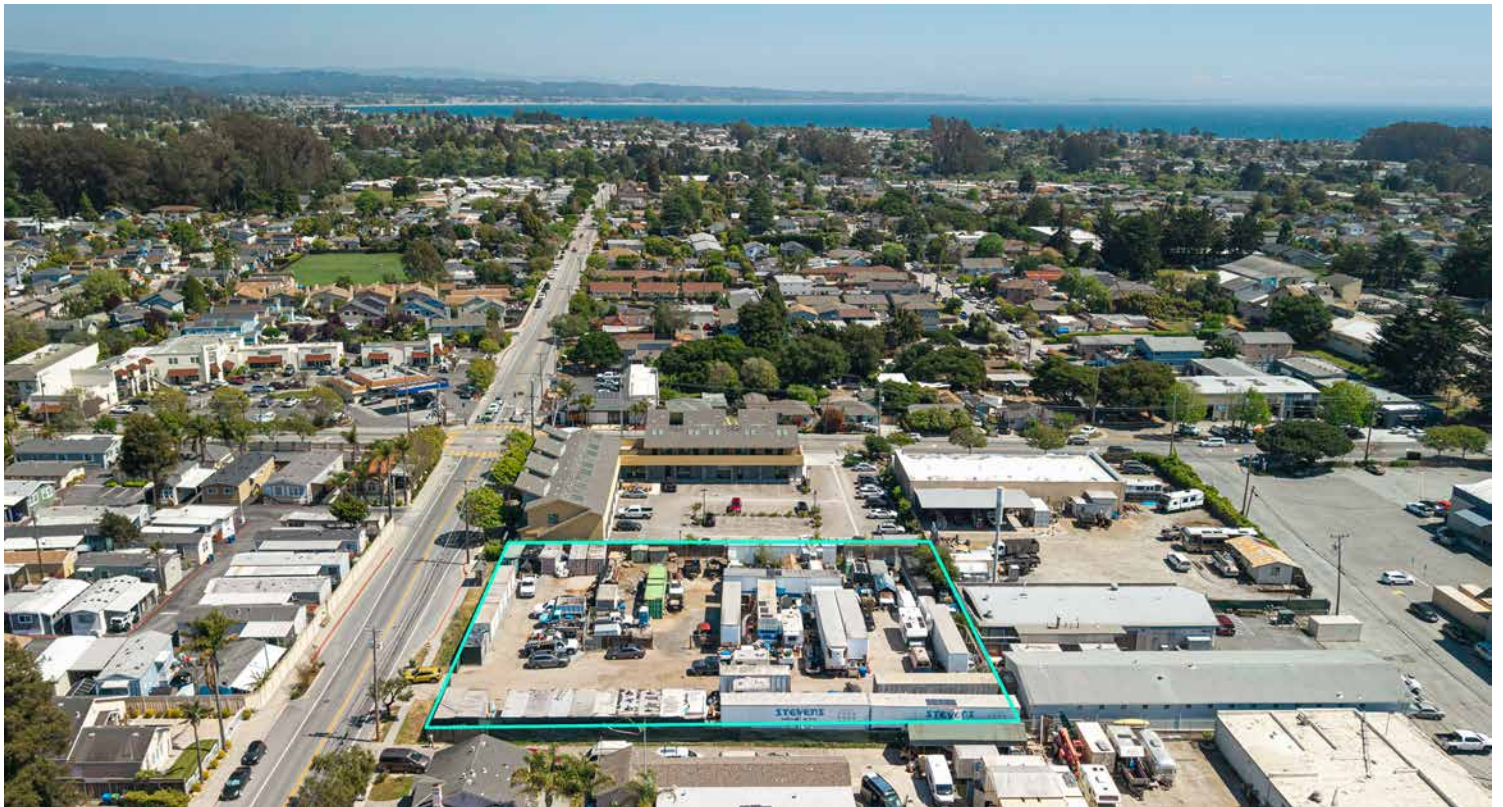


Information presented in this proforma was provided by the Seller. Shoemaker Commercial makes no representation as to the accuracy of the information. Buyer should use diligence investigating the financial feasibility in making a purchase or lease by relying on his or her own professional advisors.

shoemakercommercial.com

AERIAL PHOTOS

1600 Brommer St, Santa Cruz, Ca

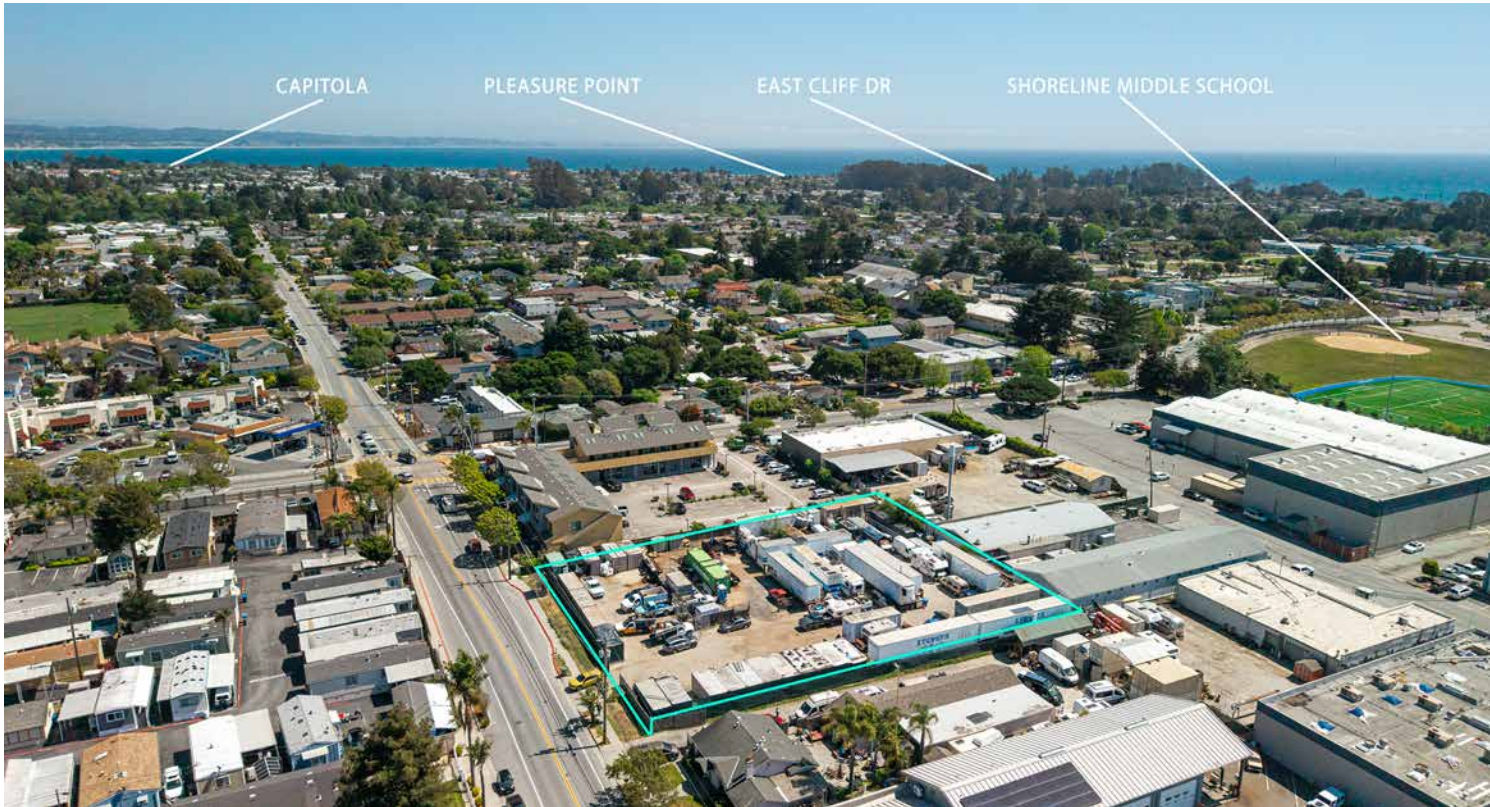


Information presented in this proforma was provided by the Seller. Shoemaker Commercial makes no representation as to the accuracy of the information. Buyer should use diligence investigating the financial feasibility in making a purchase or lease by relying on his or her own professional advisors.

shoemakercommercial.com

AERIAL PHOTOS

1600 Brommer St, Santa Cruz, Ca

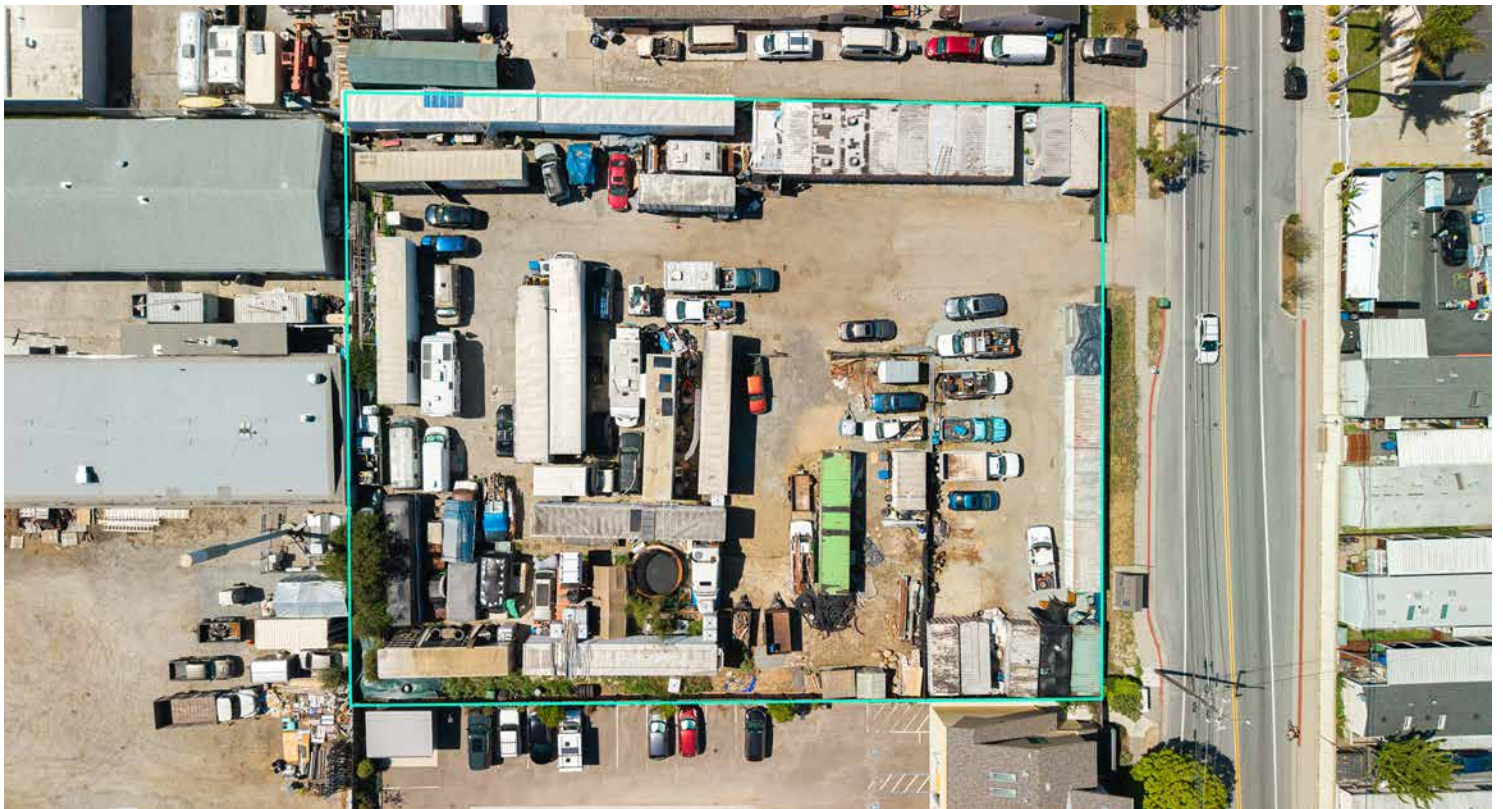


Information presented in this proforma was provided by the Seller. Shoemaker Commercial makes no representation as to the accuracy of the information. Buyer should use diligence investigating the financial feasibility in making a purchase or lease by relying on his or her own professional advisors.

shoemakercommercial.com

AERIAL PHOTOS

1600 Brommer St, Santa Cruz, Ca



Information presented in this proforma was provided by the Seller. Shoemaker Commercial makes no representation as to the accuracy of the information. Buyer should use diligence investigating the financial feasibility in making a purchase or lease by relying on his or her own professional advisors.

shoemakercommercial.com