

NEW LIFESTYLE **OFFICE SPACE** AT



— THE —  
**VERANDA**  
— ◆ —

2001-2003 DIAMOND BLVD | CONCORD, CA

**MULTI-USE OFFICE SPACE**

±4,219 - ±13,829 RSF  
AVAILABLE FOR LEASE

**NEWMARK**

**EXCLUSIVE AGENTS**

**RICH HOYT**  
*Senior Managing Director*  
925.460.9292  
rich.hoyt@nmrk.com  
CA RE License #01470213

**WILL BALLOWE**  
*Director*  
925.389.2499  
will.ballowe@nmrk.com  
CA RE License #02053125





## Office Space at The Veranda

- ❖ The Veranda is a ±375,000 RSF mixed use project located in Concord, CA on Diamond Boulevard. It is in close proximity to Interstate 680 as well as downtown Concord and Pleasant Hill.
- ❖ Freeway signage available (subject to availability and with Landlord approval)
- ❖ Space Available Now!
- ❖ Best walking distance amenities of any office space in the North I-680 Market
- ❖ Ample parking on-site surrounding the entire Project
- ❖ Work / Play Environment
- ❖ On-site Property Management
- ❖ Building common conference room

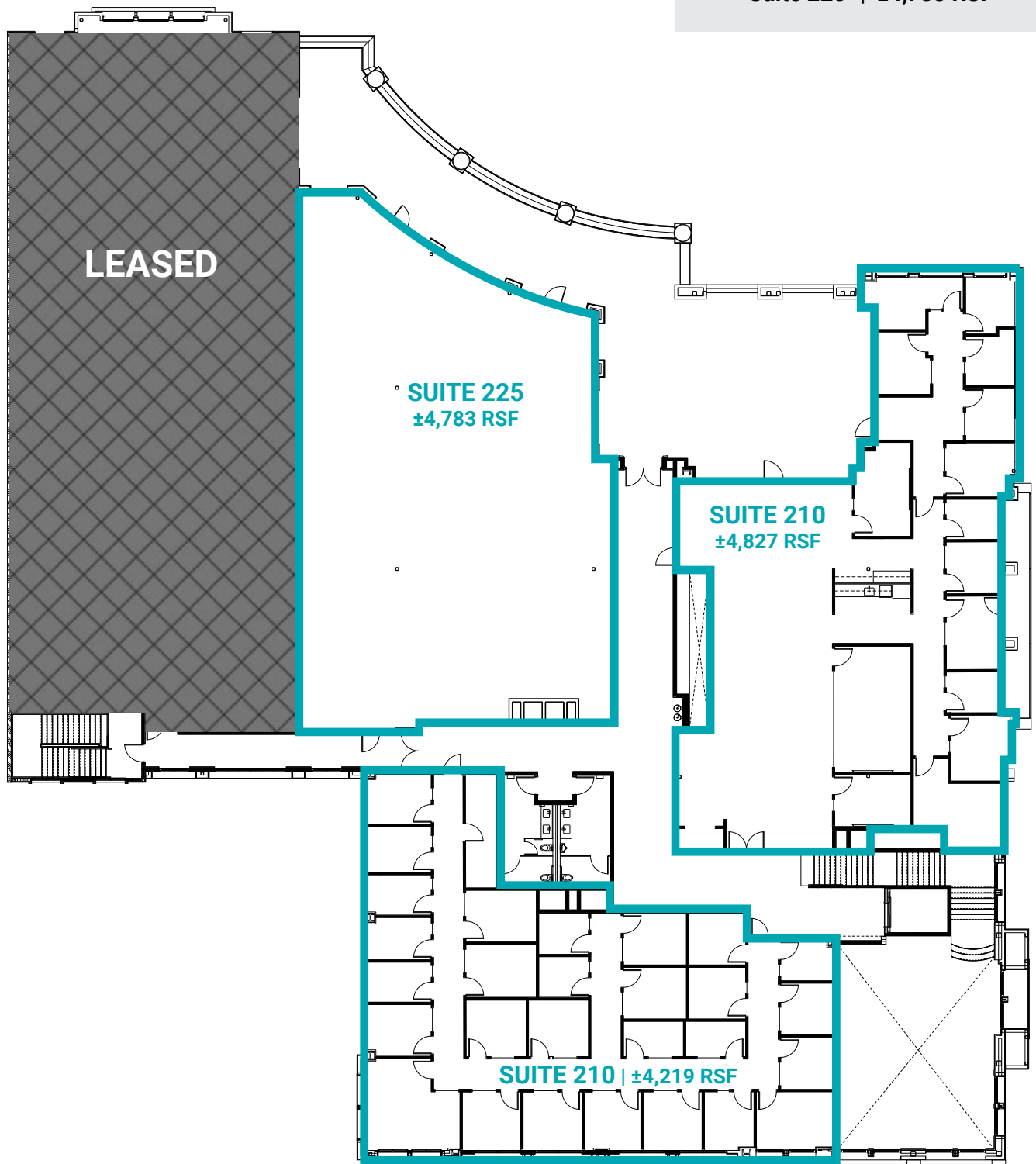
2nd Floor

Suites & Square  
Footages

Suite 210 |  $\pm 4,827$  RSF

Suite 215 |  $\pm 4,219$  RSF

Suite 225 |  $\pm 4,783$  RSF







xfinity

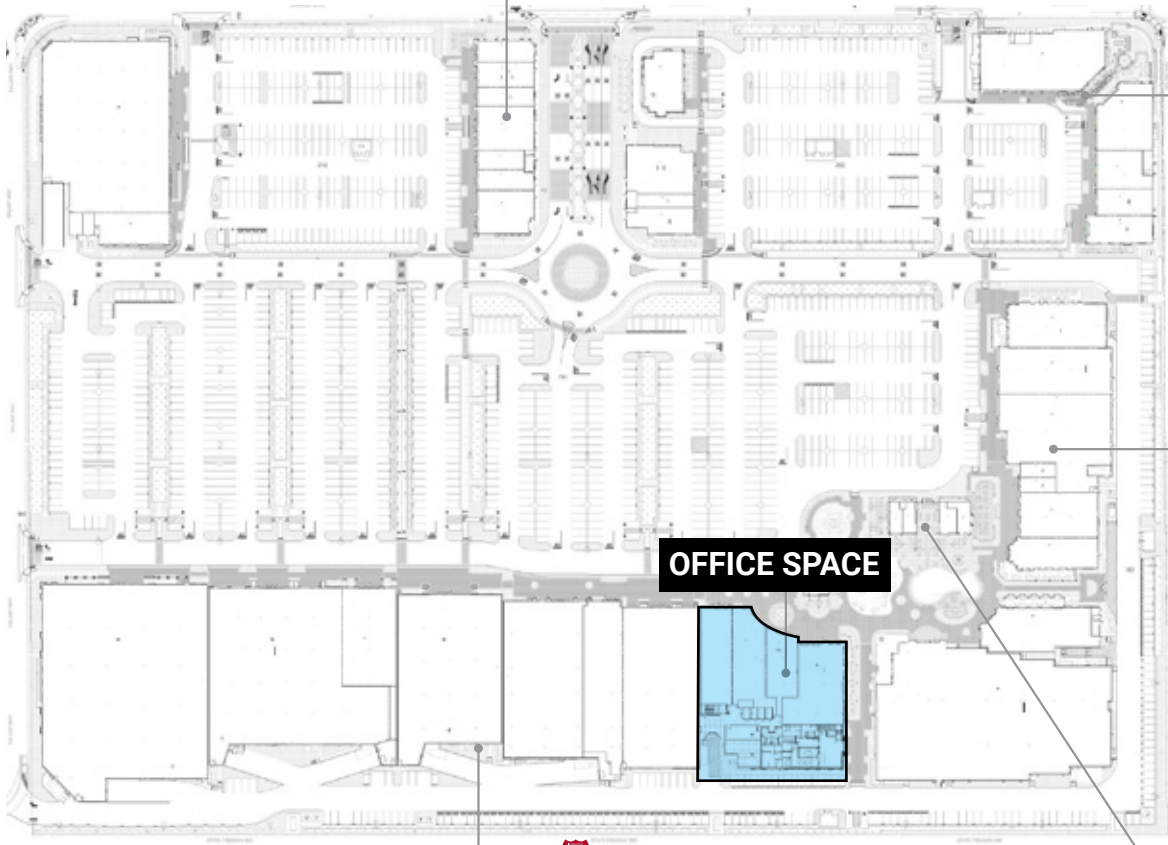


BANANA REPUBLIC

BARNES & NOBLE



popbar



OFFICE SPACE



NEWMARK

## EXCLUSIVE AGENTS

**RICH HOYT**  
Senior Managing Director  
925.460.9292  
rich.hoyt@nmrk.com  
CA RE License #01470213

**WILL BALLOWE**  
Director  
925.389.2499  
will.ballowe@nmrk.com  
CA RE License #02053125



xfinity



sleep

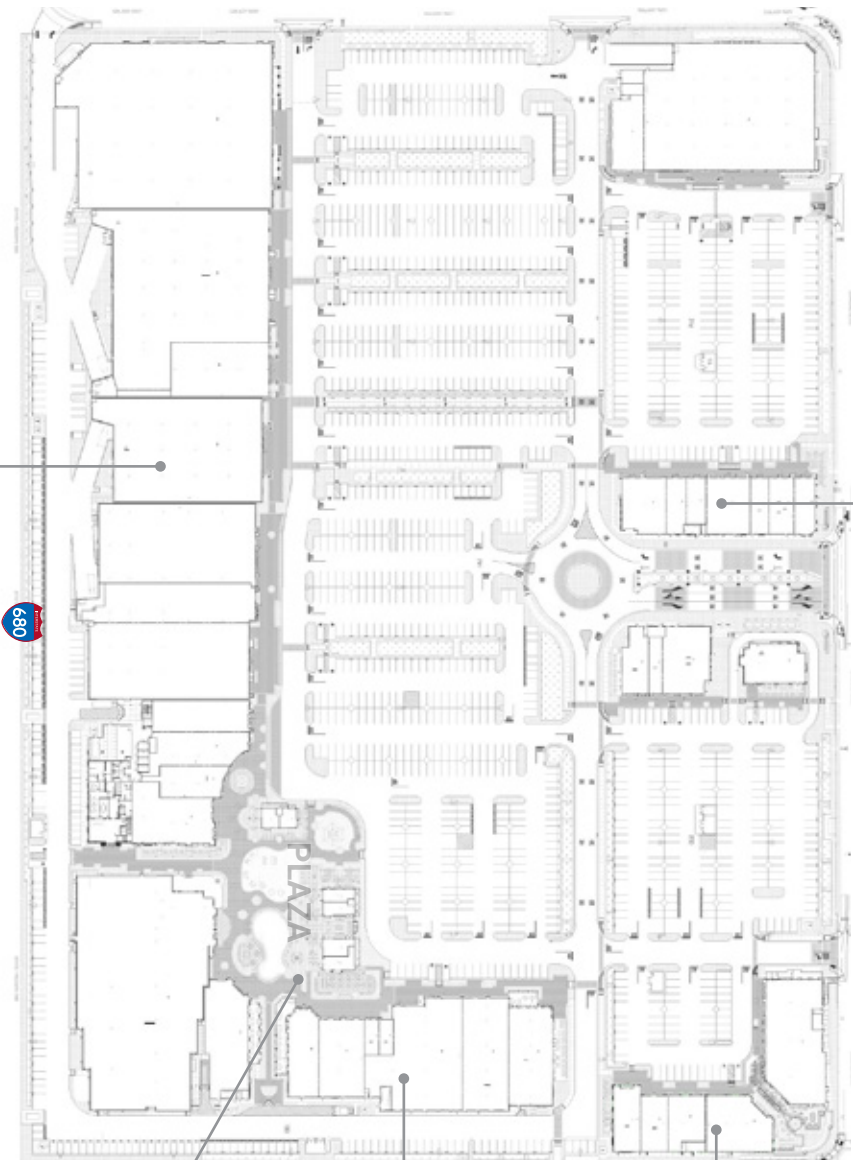


BANANA REPUBLIC

BARNES & NOBLE



popbar



NEWMARK

CENTERCAL  
PROPERTIES, LLC

The distributor of this communication is performing acts for which a real estate license is required. The information contained herein has been obtained from sources deemed reliable but has not been verified and no guarantee, warranty or representation, either express or implied, is made with respect to such information. Terms of sale or lease and availability are subject to change or withdrawal without notice.