

2900 WHITEHOUSE ROAD

South Chesterfield, Virginia 23834

FOR SALE

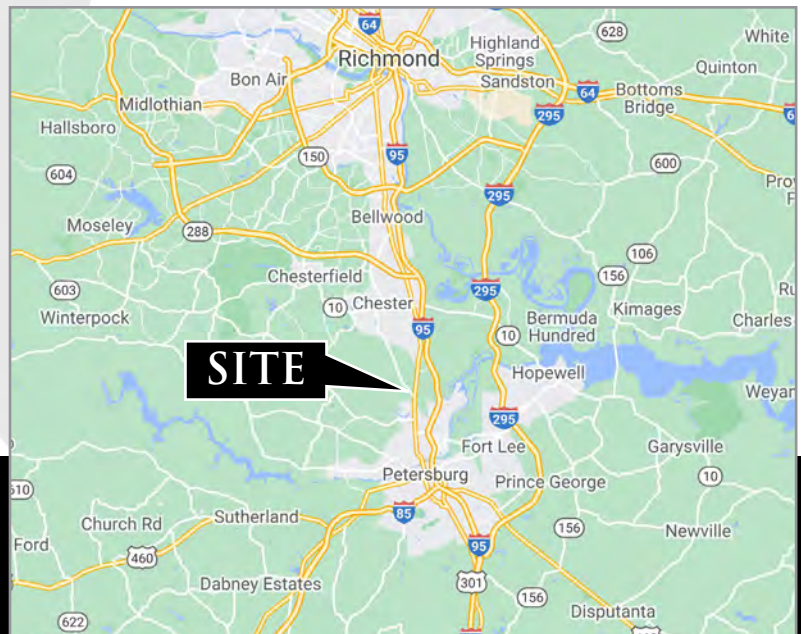


MIXED USE LAND AVAILABLE FOR SALE

PROPERTY HIGHLIGHTS:

- ▶ 15+/- acre parcel available
- ▶ County plan shows mixed use zoning, Residential and Commercial (currently Agricultural)
- ▶ Great location with frontage along Whitehouse Road and Harrowgate Road.
- ▶ Near signalized intersection along US Route 1 (22,000 VPD) and close proximity to I-95
- ▶ Near large subdivisions and retail amenities (Chester & Colonial Heights)
- ▶ Public water & sewer in place
- ▶ Sale Price: \$950,000

DEMOGRAPHICS	1 Mile	3 Miles	5 Miles
Population	5,145	32,474	80,278
Average Household Income	\$75,621	\$78,994	\$76,170
Daytime Population	1,796	13,608	32,128



Nathan S. Jones, IV

nathan.jones@domcommercial.com

855.530.2300

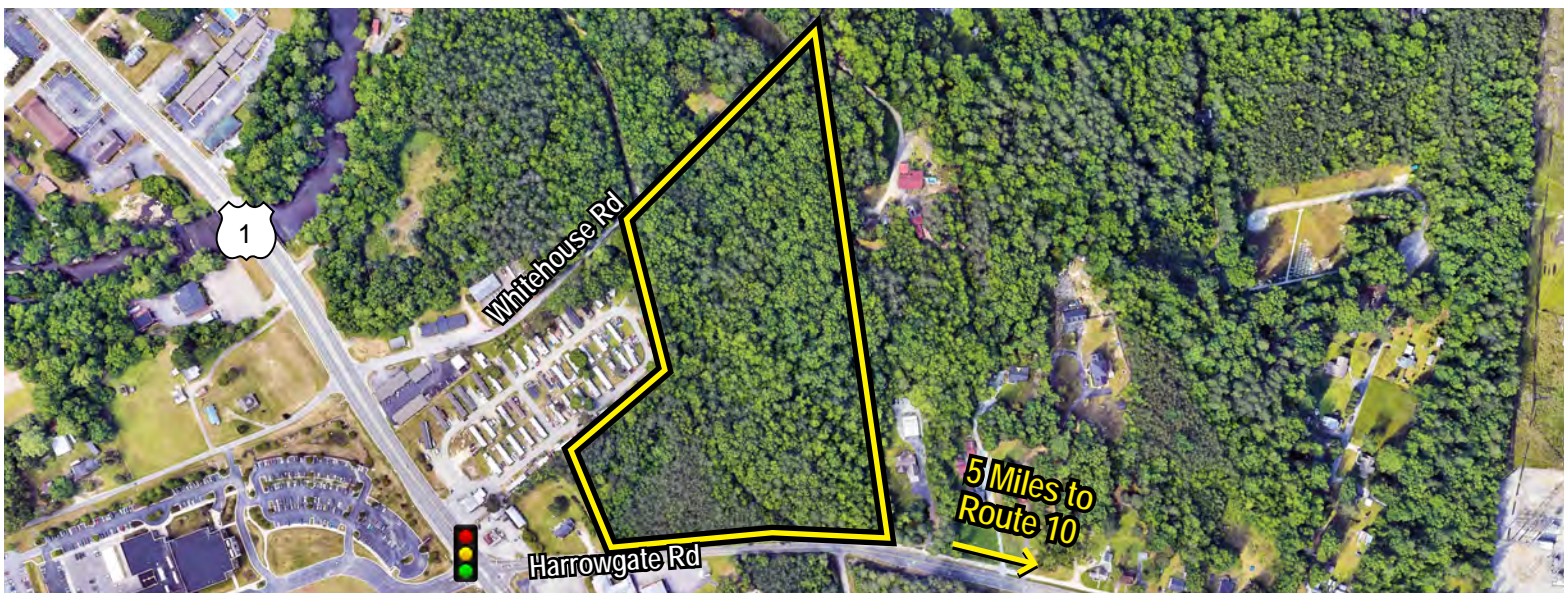
domcommercial.com

Follow us on:

2900 WHITEHOUSE ROAD

FOR SALE

South Chesterfield, Virginia 23834

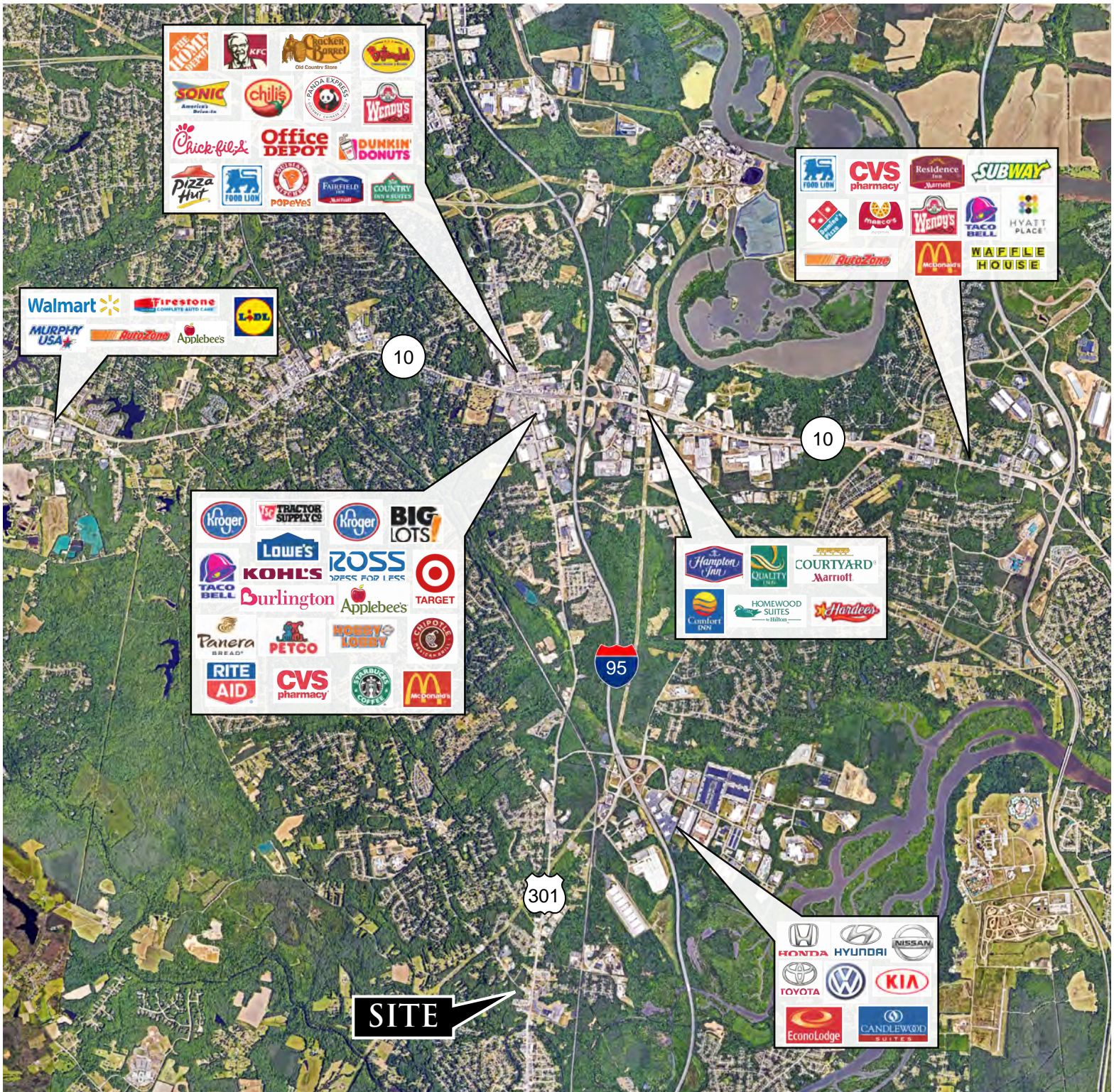


Nathan S. Jones, IV
nathan.jones@domcommercial.com
855.530.2300
domcommercial.com

2900 WHITEHOUSE ROAD

FOR SALE

South Chesterfield, Virginia 23834



DOMINIONCOMMERCIAL
REAL PARTNERS for REAL ESTATE

Nathan S. Jones, IV
nathan.jones@domcommercial.com
855.530.2300
domcommercial.com

2900 WHITEHOUSE ROAD

— South Chesterfield, Virginia 23834 —

FOR SALE

ABOUT DOMINION COMMERCIAL

At Dominion Commercial, we are passionate about two things, commercial real estate and delivering an exceptional customer experience. From brokerage, property management and asset services, we have a complete suite of services that were developed to navigate you through the often complex world of commercial real estate. We are a multi-state, regional commercial real estate firm that serve clients and communities across the coastal southeast states from Virginia to Florida. Our local knowledge and the uncommon ability to really listen to you, our client, has earned us a level of trust and respect that we bring to every interaction.



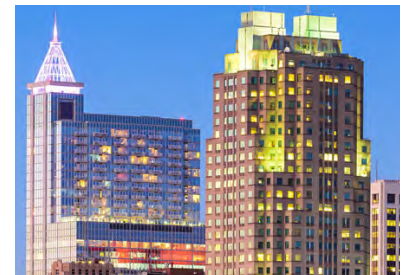
**For Your Commercial
Real Estate Needs**

*Throughout the
Coastal Southeast*

VIRGINIA: 7400 Beaufort Springs Dr, Suite 300 | Richmond, VA 23225

SOUTH CAROLINA: 75 Port City Landing, Suite 110 | Mount Pleasant, SC 29464

FLORIDA: 10151 Deerwood Park Blvd, Suite 200-250 | Jacksonville, FL 32256



Nathan S. Jones, IV
nathan.jones@domcommercial.com
855.530.2300
domcommercial.com