

7 FRONTAGE RD UNION TOWNSHIP, NJ 08809

FOR LEASE

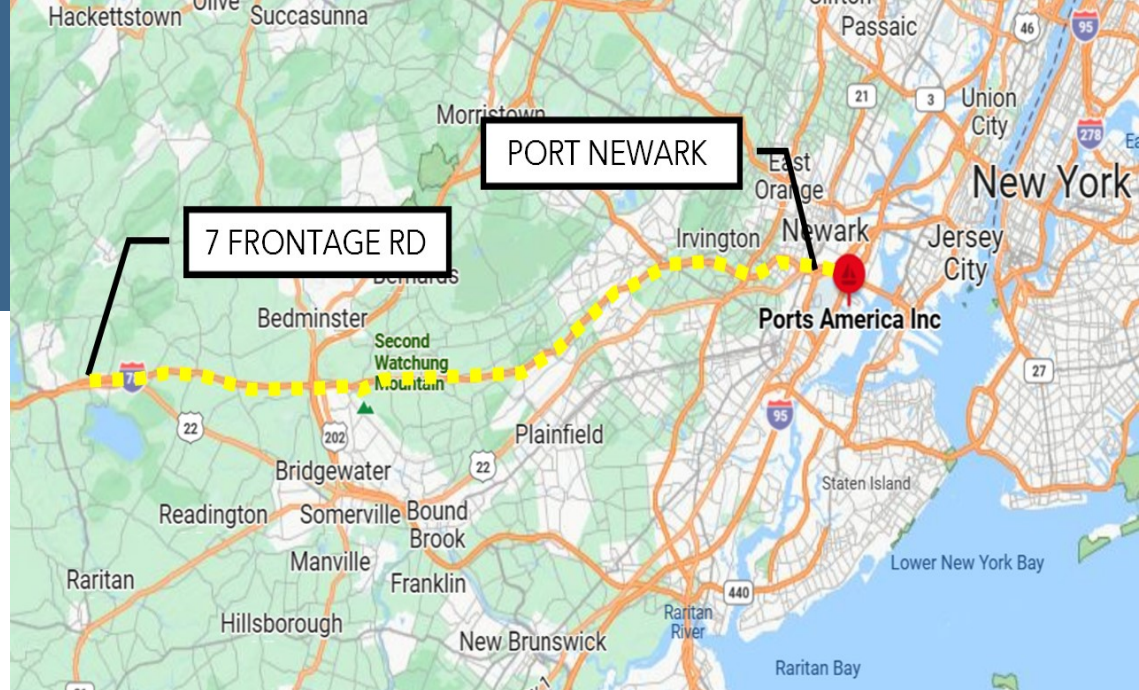
- 11 ACRES OF OUTDOOR STORAGE OR TRAILER PARKING
- YARD IS LEVEL & STABLE
- IDEAL ACCESS & VISIBILITY FROM RT 78
- 47,000 SF WH AVAILABLE IN ADDITION
- 45 MILES FROM PORT NEWARK

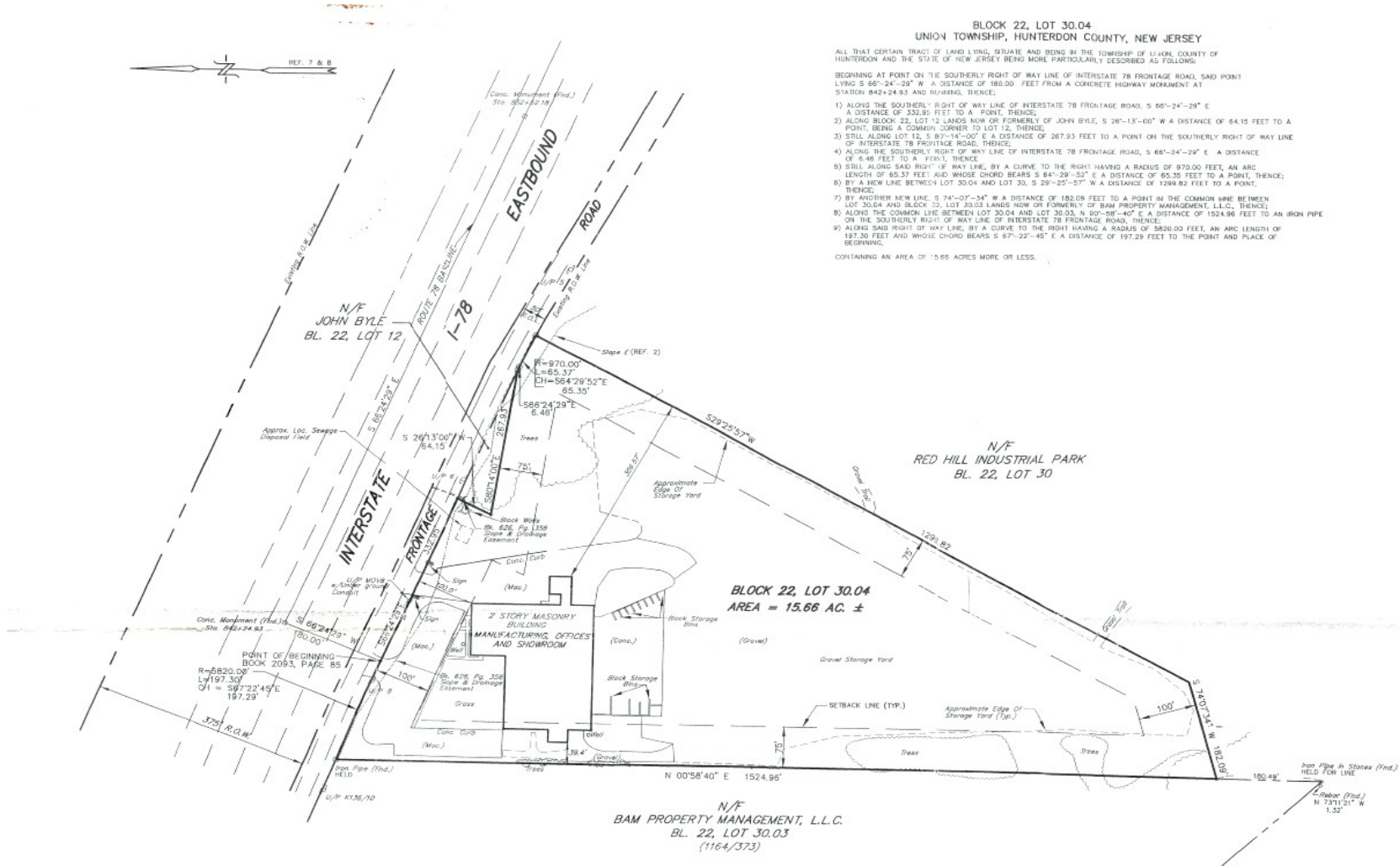
\$10,000 PER MONTH, PER ACRE

Lance Bram
COMMERCIAL BROKERAGE
www.lancebram.com

JOE D'AGOSTINO 732.690.6339 JOE@LANCEBRAM.COM

This information has been secured from sources we believe to be reliable. Accordingly, no warranty or representation, express or implied, is made to the accuracy of the information contained herein, and same submitted to errors, omissions, change of price, rental or other conditions, withdrawal notice, and to any special listing conditions imposed by our principals.





JOE D'AGOSTINO 732.690.6339 JOE@LANCEBRAM.COM

This information has been secured from sources we believe to be reliable. Accordingly, no warranty or representation, express or implied, is made to the accuracy of the information contained herein, and same submitted to errors, omissions, change of price, rental or other conditions, withdrawal notice, and to any special listing conditions imposed by our principals.