



PRIME RETAIL  
FOR LEASE

FOR LEASE

**614 NASHUA STREET,  
MILFORD, NH 03055**

2,400 & 4,800 +/- SF Available

# PROPERTY INFORMATION



Well Located Retail Units 2,400 & 4,800 Available  
Lease Rate: \$15 PSF NNN

## DESCRIPTION:

This is a great opportunity with visibility off an exit ramp to co-locate with national and regional brands. Two units, 2,400 and 4,800+/- SF of retail space on Nashua Street with nearby tenants such as Starbucks and Shaw's. The 4,800 SF unit was a former Battle Ax facility.

## PROPERTY FEATURES:

- Public Water & Sewer
- Zoning: OFC (Office)
- Ample parking
- Easy Highway Access

## VIRTUAL TOUR LINK

# DEMOGRAPHICS



## 2024 SUMMARY

2024 SUMMARY	2 MILE	5 MILE	10 MILE
Population	10,552	38,047	181,388
Households	4,598	14,589	70,876
Families	2,772	10,605	48,889
Avg HH Size	2.27	2.59	2.54
Median Age	42.1	42.9	42.6
Median HH Income	\$88,611	\$128,952	\$113,888
Avg HH Income	\$124,074	\$169,831	\$154,851

### BUSINESSES (10 MILE)



7,635

TOTAL BUSINESSES



92,663

TOTAL EMPLOYEES

### INCOME (10 MILE)



\$113,888

MEDIAN HH  
INCOME



\$60,563

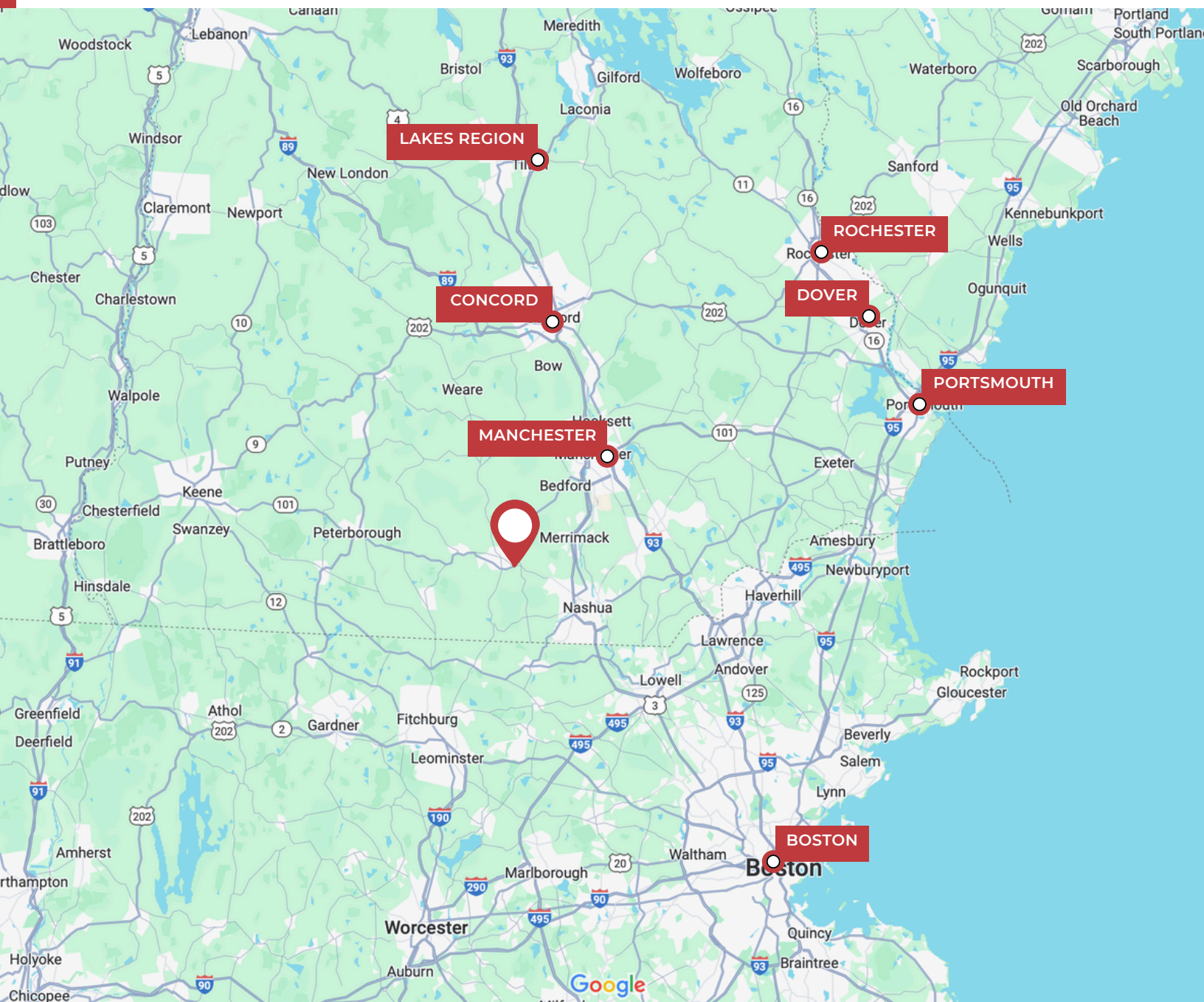
PER CAPITA  
INCOME



\$542,130

MEDIAN NET  
WORTH

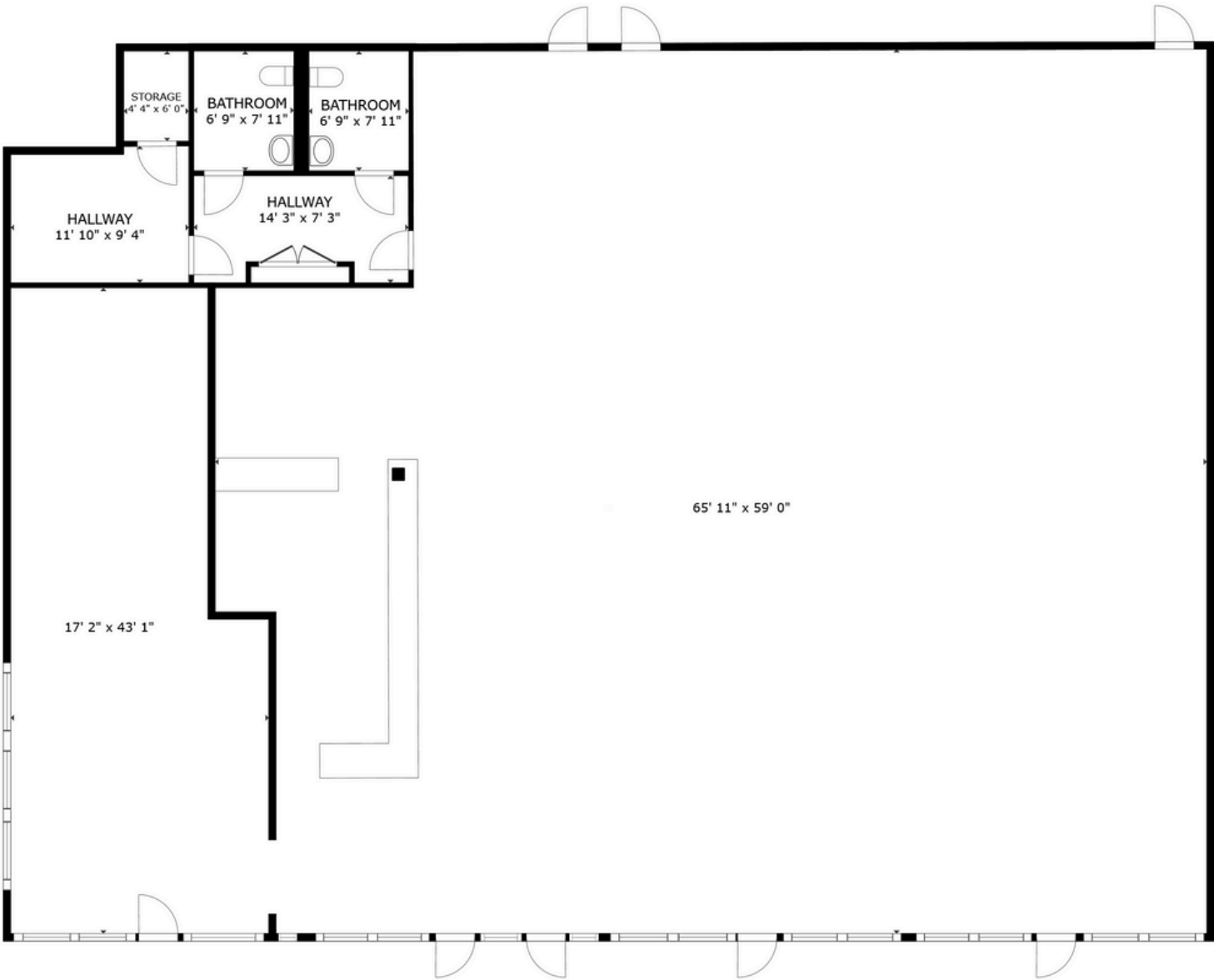
# MAP LOCATOR



## DRIVE TIMES TO:

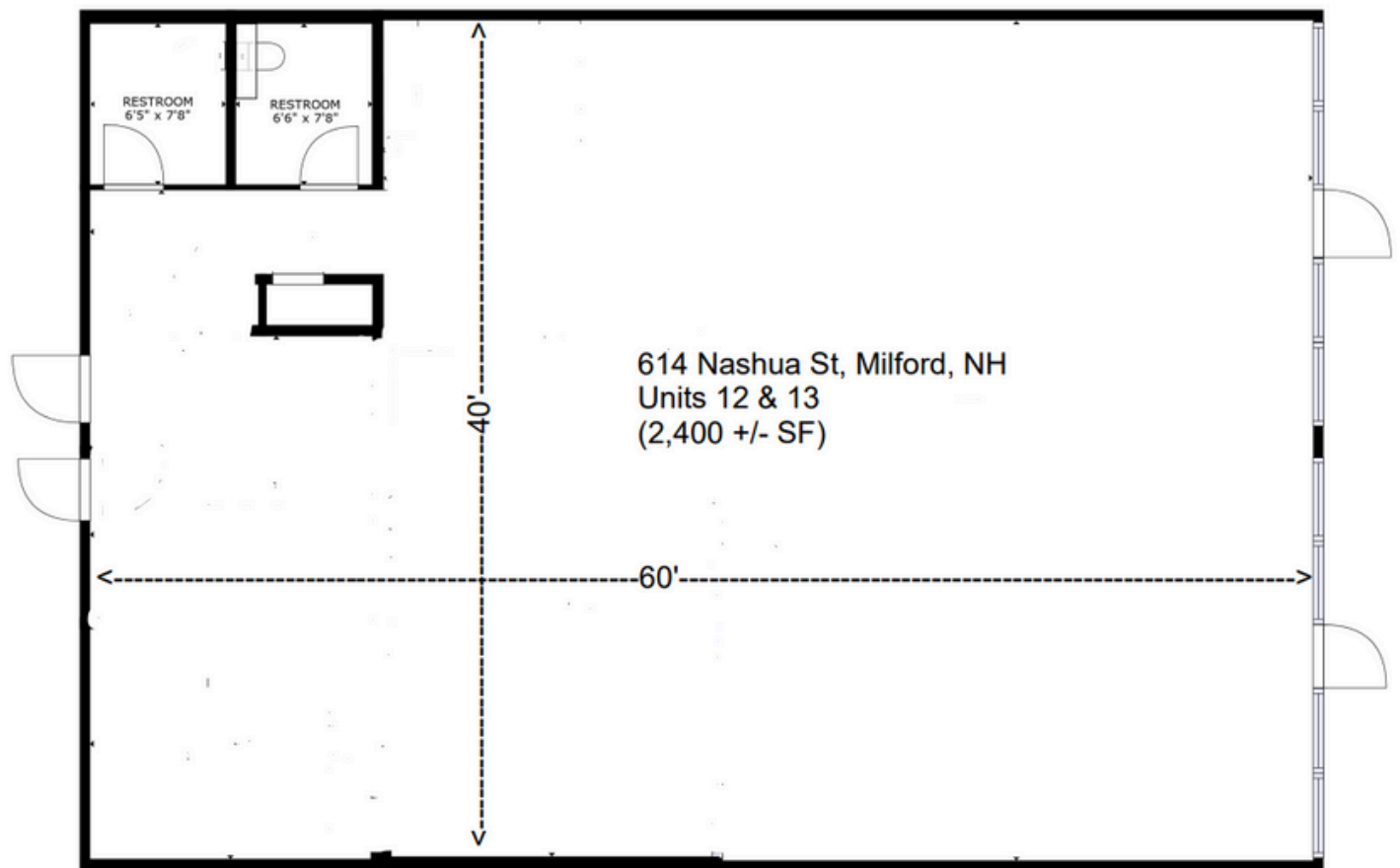
<b>Manchester, NH</b>	30 mins	<b>Lakes Region, NH</b>	1 hr
<b>Concord, NH</b>	44 min	<b>Dover, NH</b>	1 hr 15 mins
<b>Boston, MA</b>	1 hr 6 mins	<b>Portsmouth, NH</b>	1 hr 8 mins

# FLOOR PLAN (4,800 SF Unit)



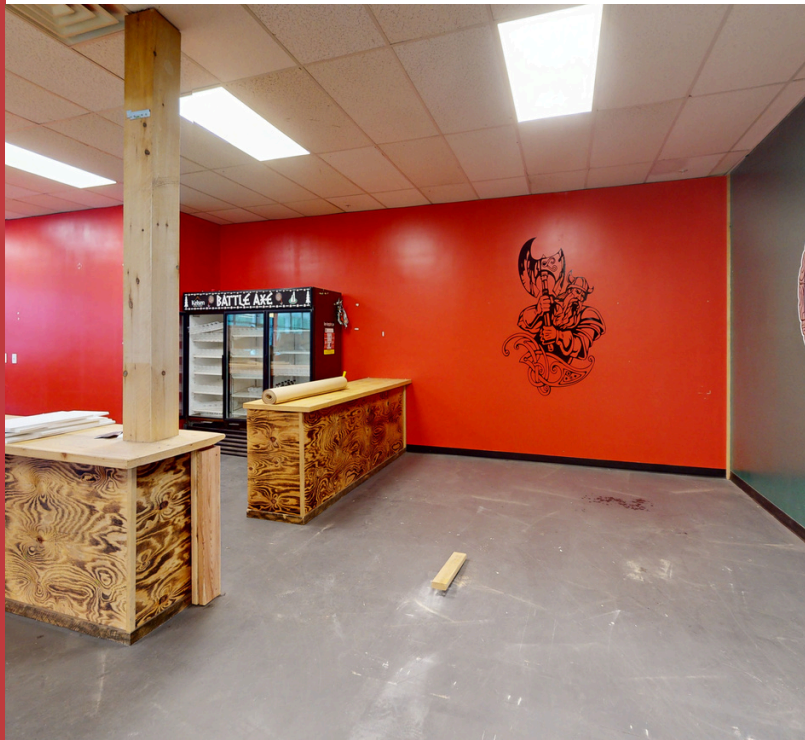
FLOOR PLAN

# FLOOR PLAN (2,400 SF Unit)



FLOOR 1

# PHOTOS (4,800 SF)



# CONFIDENTIALITY & DISCLAIMER

THIS OFFERING IS SUBJECT TO THE FOLLOWING ASSUMPTIONS AND LIMITING CONDITIONS:

NAI Norwood Group assumes no responsibility for matter legal in character, nor do we render any opinion as to the title which is assumed to be good.

We believe the information furnished to us by the owners and others is reliable, but we assume no responsibility for its accuracy.

Buyers should not rely on this information, and Buyers should make their own investigation of any and all aspects.

---

PRESENTED BY:

---

**JUDY NILES-SIMMONS**

**SENIOR ADVISOR**

tel (603) 668-7000

mobile (603) 496-4516

[judy@nainorwoodgroup.com](mailto:judy@nainorwoodgroup.com)

**CHRISTOPHER NORWOOD**

**PRESIDENT**

tel (603) 668-7000

[cnorwood@nainorwoodgroup.com](mailto:cnorwood@nainorwoodgroup.com)



**NAI Norwood Group**  
116 South River Road  
Bedford, NH 03110  
[www.nainorwoodgroup.com](http://www.nainorwoodgroup.com)