

OFFICE BUILDING FOR LEASE

300 MARTIN LUTHER KING BLVD

Wilmington, DE 19801



PROPERTY DESCRIPTION

Beautifully converted building built in the 1880s has two office suites available for lease! This unique building retained the exposed brick with post and beam construction for a one of a kind work environment with a contemporary feel, exposed ducts, open floor plan and separate offices. Original building furnishings were restored and incorporated into the interior design! Located in Wilmington's Waterfront District, it's within walking distance to all riverfront attractions, restaurants, train and bus station. Join the revival of Downtown Wilmington with turn-key ready to move in contemporary office suites!

PROPERTY HIGHLIGHTS

- Prominent Signage on MLK Blvd Available
- Turn-Key Suites, Move-In Ready
- Best Value Office Space in Wilmington Area
- Elevator ADA Compliant and Free Parking with Designated Spaces

OFFERING SUMMARY

Lease Rate:	\$11.00 SF/yr (NNN)
Building Size:	18,000 +/- SF
First Floor: Suite 100	2,000 +/- SF
Second Floor: Suite 200	4,200 +/- SF

GREAT LOCATION AND CONTACT INFORMATION

Located in Wilmington's Riverfront District close to restaurants, shops and Riverwalk and Two Blocks from Riverfront Market. Walking Distance to Train and Bus Stations. Call Dan Bachtle at 302.983.3190 to get started today!

CHRIS MOORE, CCIM

Managing Principal, Broker of Record
O: 302.414.1000 | C: 302.383.1911
moore@LMTCRE.com



OFFICE BUILDING FOR LEASE
300 MARTIN LUTHER KING BLVD

Wilmington, DE 19801



Exterior - Elevator Location



ADA Compliant Elevator

CHRIS MOORE, CCIM
Managing Principal, Broker of Record
O: 302.414.1000 | C: 302.383.1911
moore@LMTCRE.com



OFFICE BUILDING FOR LEASE
300 MARTIN LUTHER KING BLVD

Wilmington, DE 19801



First Floor: Suite 100 - Reception



First Floor: Suite 100 - Private Offices

CHRIS MOORE, CCIM
Managing Principal, Broker of Record
O: 302.414.1000 | C: 302.383.1911
moore@LMTCRE.com



OFFICE BUILDING FOR LEASE
300 MARTIN LUTHER KING BLVD

Wilmington, DE 19801



First Floor: Suite 100 - Conference Room



First Floor: Suite 100 - Open Copier Area

CHRIS MOORE, CCIM
Managing Principal, Broker of Record
O: 302.414.1000 | C: 302.383.1911
moore@LMTCRE.com



OFFICE BUILDING FOR LEASE
300 MARTIN LUTHER KING BLVD

Wilmington, DE 19801



First Floor: Suite 100 - Open Work Stations



First Floor: Suite 100 - Kitchen

CHRIS MOORE, CCIM
Managing Principal, Broker of Record
O: 302.414.1000 | C: 302.383.1911
moore@LMTCRE.com



OFFICE BUILDING FOR LEASE
300 MARTIN LUTHER KING BLVD

Wilmington, DE 19801



Second Floor: Suite 200 - Reception



Second Floor: Suite 200 - Offices

CHRIS MOORE, CCIM
Managing Principal, Broker of Record
O: 302.414.1000 | C: 302.383.1911
moore@LMTCRE.com



OFFICE BUILDING FOR LEASE
300 MARTIN LUTHER KING BLVD

Wilmington, DE 19801



Second Floor: Suite 200 - Open Work Area and Kitchen



Second Floor: Suite 200 - Work Stations

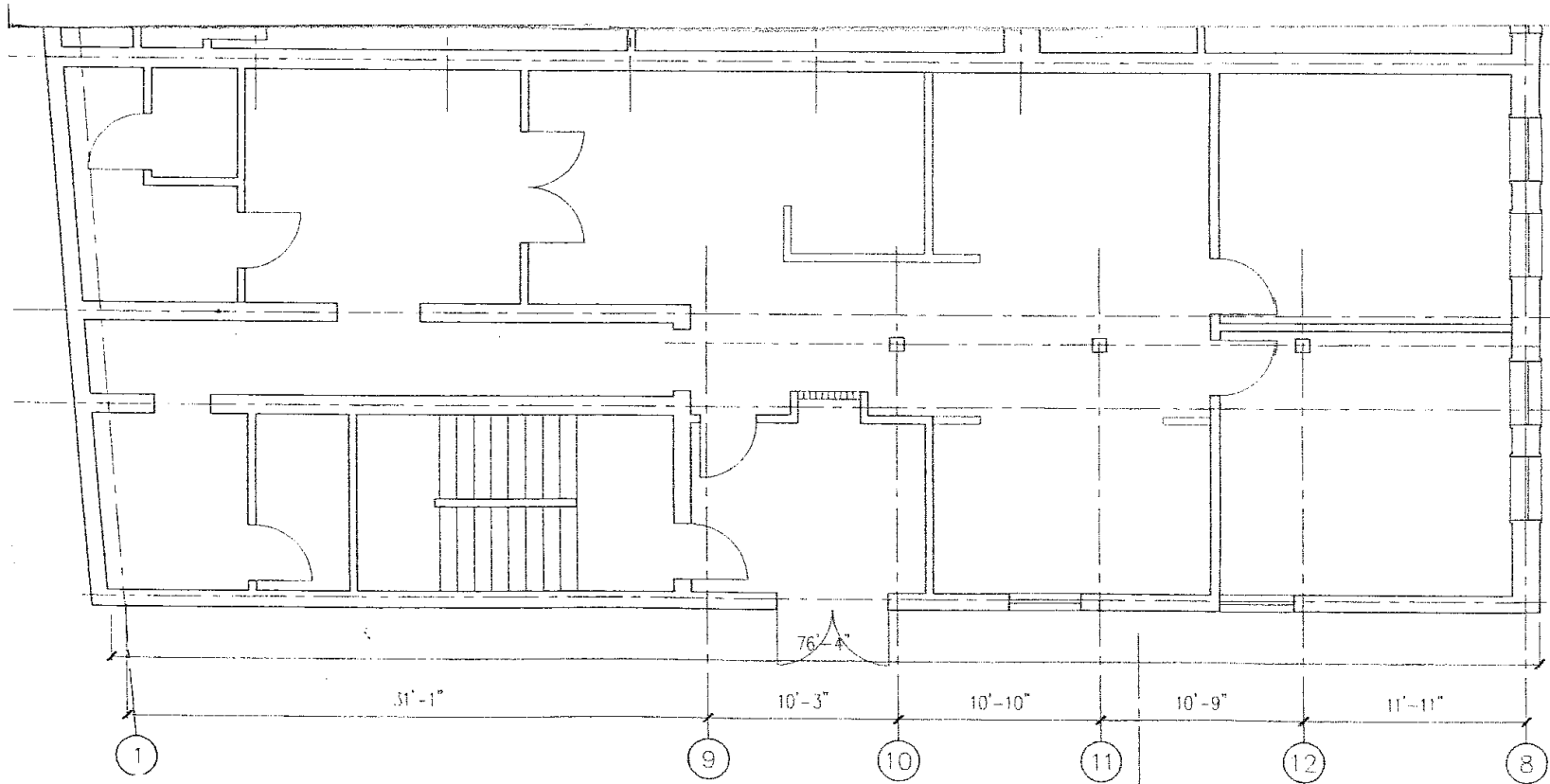
CHRIS MOORE, CCIM
Managing Principal, Broker of Record
O: 302.414.1000 | C: 302.383.1911
moore@LMTCRE.com



OFFICE BUILDING FOR LEASE

300 MARTIN LUTHER KING BLVD

Wilmington, DE 19801



FIRST FLOOR 300 MLK BLVD. 2,000 +/- SF

CHRIS MOORE, CCIM

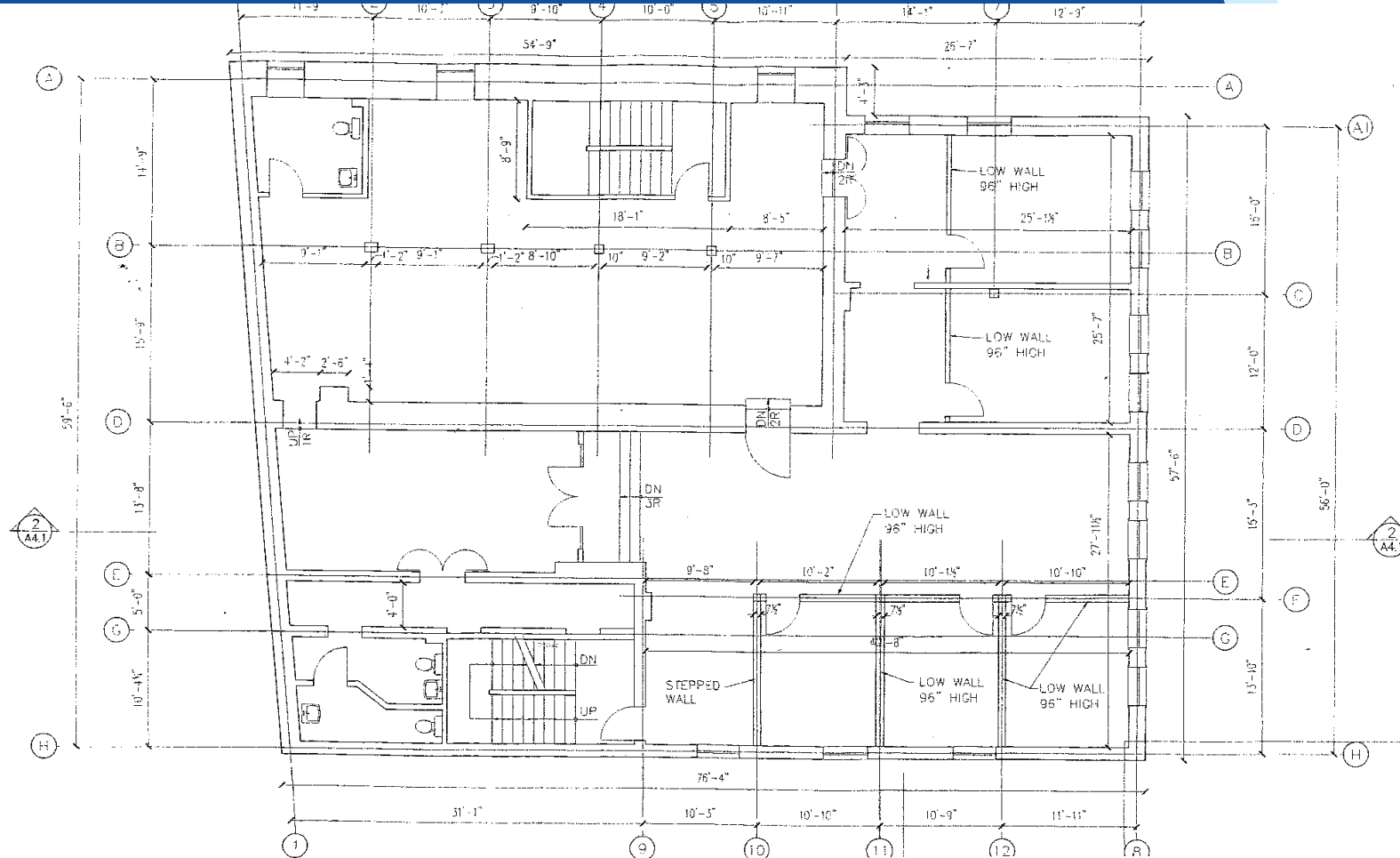
Managing Principal, Broker of Record
O: 302.414.1000 | C: 302.383.1911
moore@LMTCRE.com



OFFICE BUILDING FOR LEASE

300 MARTIN LUTHER KING BLVD

Wilmington, DE 19801



SECOND FLOOR PLAN 300 MLK BLVD. 4,200 +/- SF

CHRIS MOORE, CCIM
Managing Principal, Broker of Record
O: 302.414.1000 | C: 302.383.1911
moore@LMTCRE.com



OFFICE BUILDING FOR LEASE

300 MARTIN LUTHER KING BLVD

Wilmington, DE 19801



Map data ©2024 Imagery ©2024 Airbus, Maxar Technologies

CHRIS MOORE, CCIM
Managing Principal, Broker of Record
O: 302.414.1000 | C: 302.383.1911
moore@LMTCRE.com



OFFICE BUILDING FOR LEASE

300 MARTIN LUTHER KING BLVD

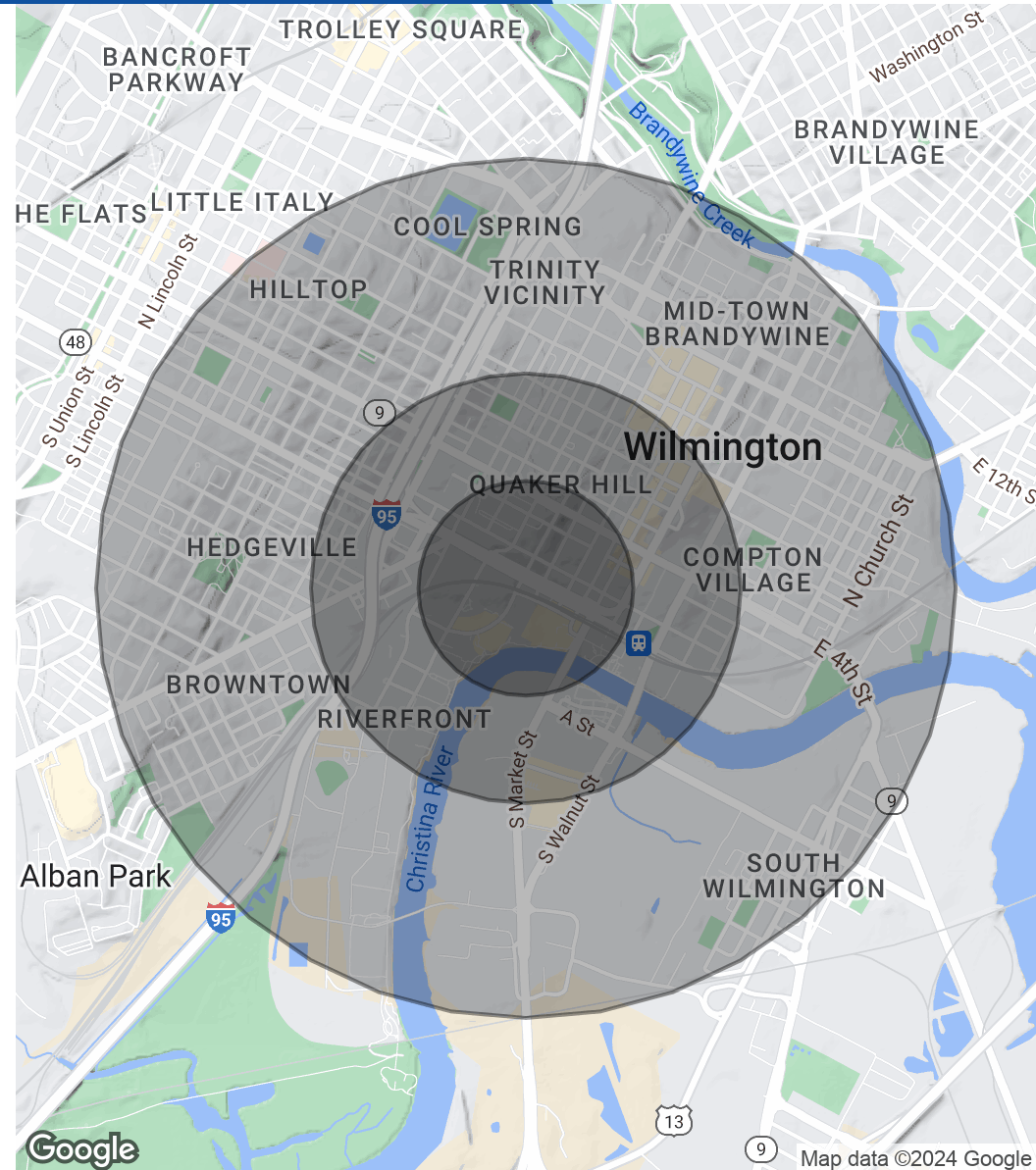
Wilmington, DE 19801



POPULATION	0.25 MILES	0.5 MILES	1 MILE
Total Population	1,214	6,875	28,253
Average Age	37.9	35.2	36.0
Average Age (Male)	32.7	35.1	36.0
Average Age (Female)	38.8	35.7	37.1

HOUSEHOLDS & INCOME	0.25 MILES	0.5 MILES	1 MILE
Total Households	705	3,522	14,362
# of Persons per HH	1.7	2.0	2.0
Average HH Income	\$39,080	\$36,998	\$45,299
Average House Value	\$104,152	\$95,280	\$133,823

2020 American Community Survey (ACS)



CHRIS MOORE, CCIM
 Managing Principal, Broker of Record
 O: 302.414.1000 | C: 302.383.1911
 moore@LMTCRE.com

