



FOR LEASE

FULLERTON BREA BUSINESS PARK

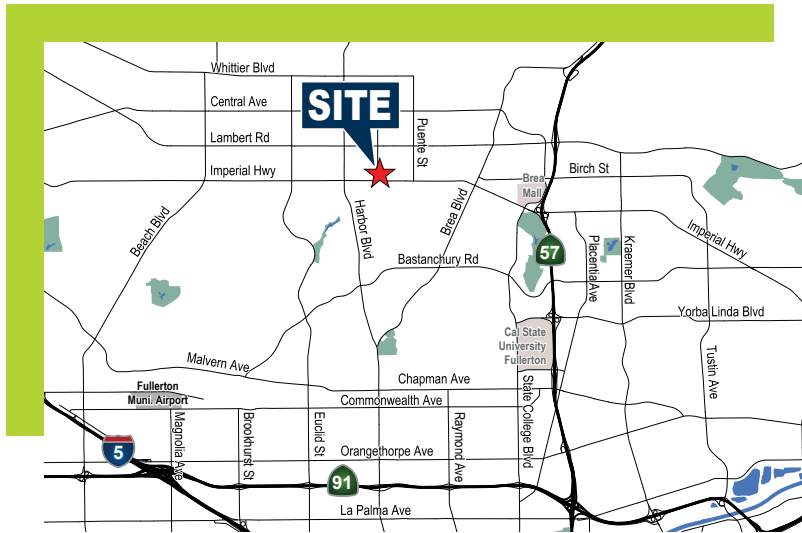
4010-4080 N PALM STREET
FULLERTON, CA 92835

FOR MORE INFORMATION:

HAYDEN SOCCI, CCIM
Senior Vice President
714.935.2379 • HSocci@voitco.com

Voit

REAL ESTATE SERVICES



FULLERTON BREA BUSINESS PARK

- » High Image Business Park
- » Major Street Frontage and Identity
- » Highly Improved Interior Office
- » 10' to 15' Ground Level Loading Doors
- » Excellent Truck Access
- » 2:1 Parking Ratio (2 spaces per 1,000 Sq. Ft.)
- » Truckwell Loading Available for Select Suites
- » Professionally Managed Business Park
- » Convenient Freeway Access to Los Angeles, Orange, and Riverside Counties



PROPERTY FEATURES

Voit
REAL ESTATE SERVICES



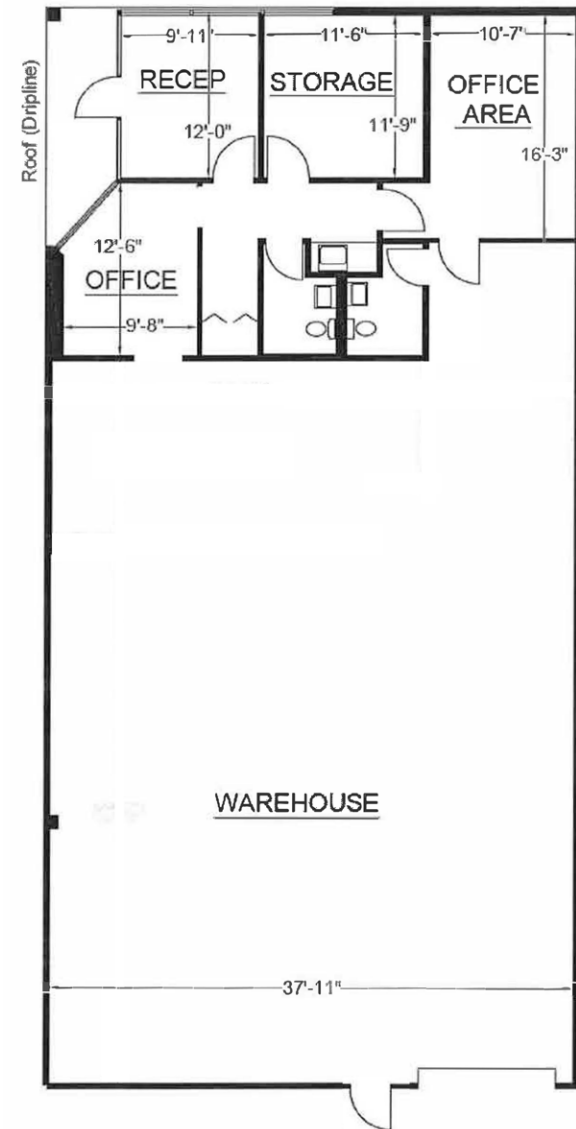
BUILDING	SUITES	TOTAL SQ. FT.	OFFICE %	ASKING RATE	AVAILABLE
4070 N. Palm St.	701	±3,061	±25%	\$5,785.00 Per Mo.	12/01/2024

AVAILABLE UNITS

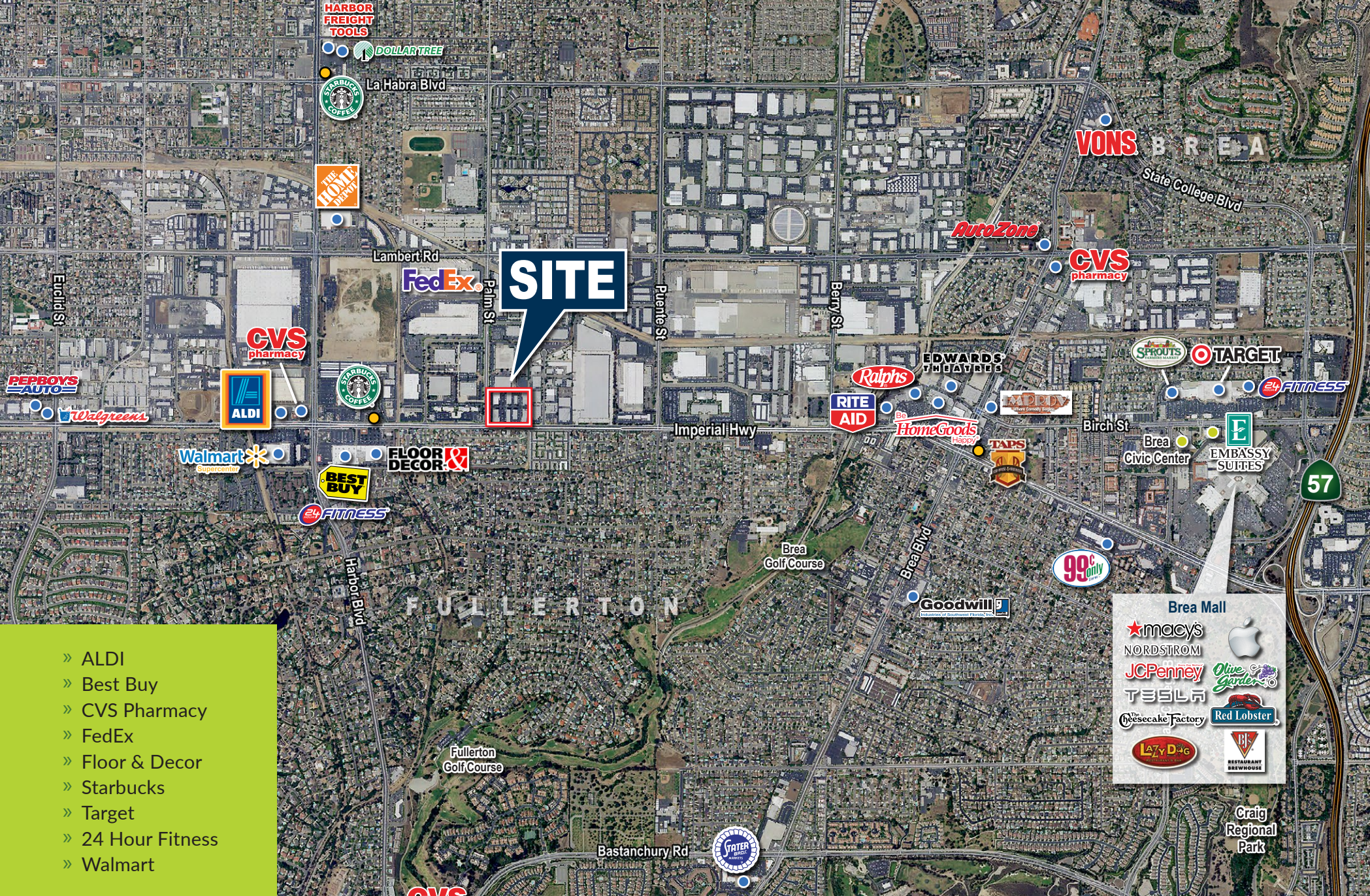


BUILDING 4070, SUITE 701

- » Available Sq. Ft.: ±3,061
- » \$5,785.00 Per Month, MG
- » ±765 Sq. Ft. of Office
- » ±14' Clearance - (verify)
- » One (1) Ground Level Loading Door (10' x 10') - (verify)
- » Available 12/01/2024



FLOOR PLAN



- » ALDI
- » Best Buy
- » CVS Pharmacy
- » FedEx
- » Floor & Decor
- » Starbucks
- » Target
- » 24 Hour Fitness
- » Walmart

Brea Mall

- ★ macy's
- NORDSTROM
- JCPenney
- TESLA
- The Cheesecake Factory
- LAZY D OG
- Apple
- Olive Garden
- Red Lobster
- RESTAURANT BREWHOUSE

AMENITIES IN THE AREA



FOR LEASE

FULLERTON BREA BUSINESS PARK

4010-4080 N PALM STREET
FULLERTON, CA 92835

FOR MORE INFORMATION:

HAYDEN SOCCI, CCIM
Senior Vice President
714.935.2379 • HSocci@voitco.com
Lic. #01705038

Voit

REAL ESTATE SERVICES

2400 E. Katella Avenue, Suite 750, Anaheim, CA 92806
714.978.7880 | 714.978.9431 Fax | www.voitco.com

Licensed as a Real Estate Salesperson by the CA DRE. ©2024 Voit Real Estate Services, Inc. All Rights Reserved. Lic. #01991785 The information contained herein has been obtained from sources we deem reliable. While we have no reason to doubt its accuracy, we do not guarantee it.