

PROPERTY DETAILS

- Size: ±23,040 SF / ±.53 AC
- **Price: \$1,850,000 (\$80 / SF)**
- Zoning: SHM1 ([Learn More](#))
- APN: 7211-030-015
- Fenced & Secured Yard
- Expired Entitled Industrial Building Development
- Ideal Contractor's Yard
- Prime Signal Hill Location

LOCAL EXPERTISE. INTERNATIONAL REACH. WORLD CLASS.

Garrett Massaro, SIOR

Cal DRE# 01771471

P: +1(562) 354-2516

E: gmassaro@leelalb.com

Brandon Carrillo

Cal DRE# 01745362

P: +1(562) 354-2510

E: bcarrillo@leelalb.com

Max P. Eddy

Cal DRE# 02163858

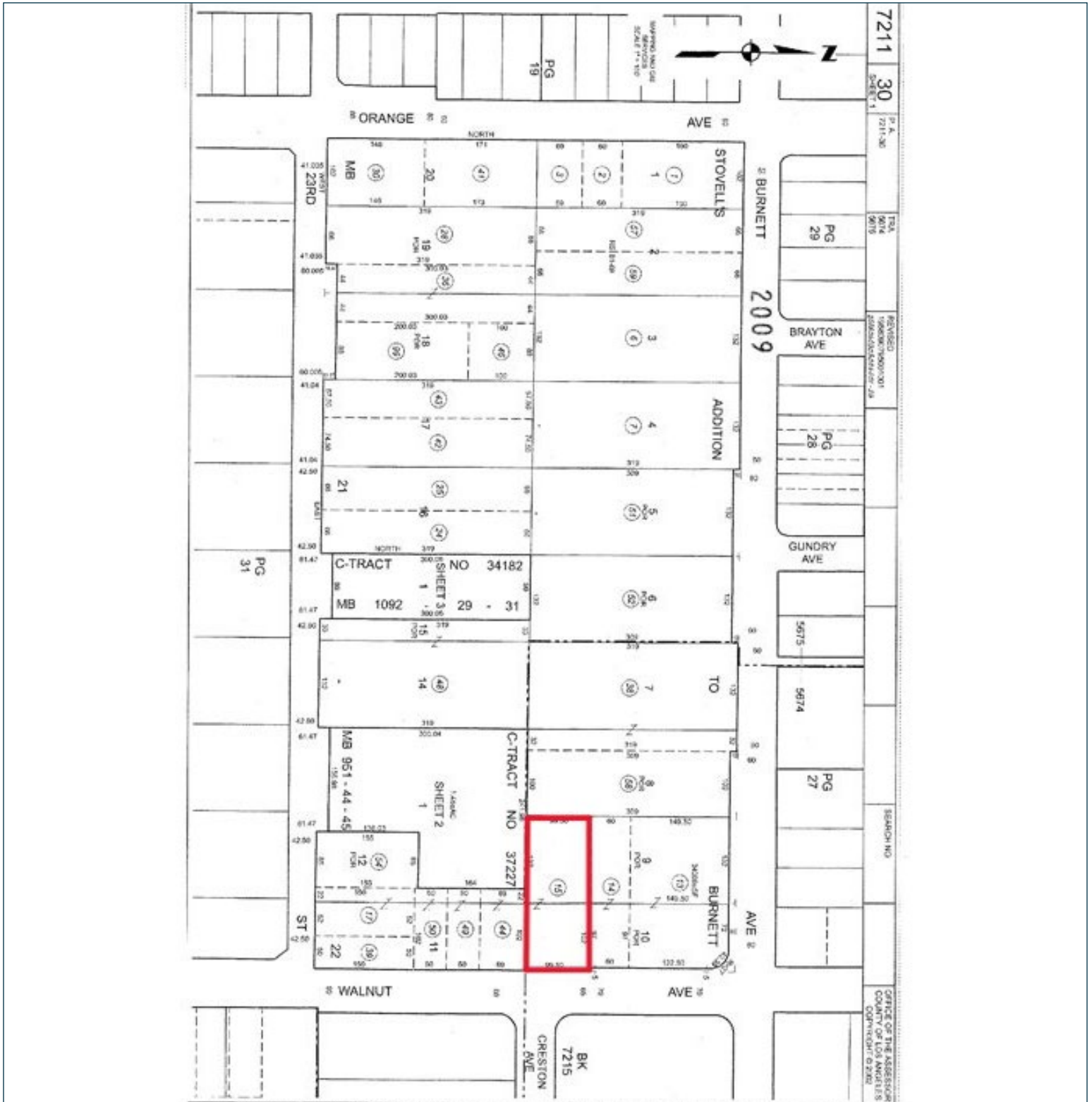
P: +1(562) 354-2538

E: meddy@leelalb.com

Copyright © Lee & Associates. All rights reserved. No part of this work may be reproduced or distributed without written permission of the copyright owner. The information contained in this report was gathered by Lee & Associates from sources believed to be reliable. Lee & Associates, however, makes no representation concerning the accuracy or completeness of such information and expressly disclaims any responsibility for any inaccuracy contained herein.

INDUSTRIAL LAND FOR SALE

2351 N WALNUT AVE, SIGNAL HILL, CA 90755



LOCAL EXPERTISE. INTERNATIONAL REACH. WORLD CLASS.

Garrett Massaro, SIOR
 Cal DRE# 01771471
 P: +1(562) 354-2516
 E: gmassaro@leelalb.com

Brandon Carrillo
 Cal DRE# 01745362
 P: +1(562) 354-2510
 E: bcarrillo@leelalb.com

Max P. Eddy
 Cal DRE# 02163858
 P: +1(562) 354-2538
 E: meddy@leelalb.com

Copyright © Lee & Associates. All rights reserved. No part of this work may be reproduced or distributed without written permission of the copyright owner. The information contained in this report was gathered by Lee & Associates from sources believed to be reliable. Lee & Associates, however, makes no representation concerning the accuracy or completeness of such information and expressly disclaims any responsibility for any inaccuracy contained herein.