

Rare Anchor Space

Up to 29,940 SF Available

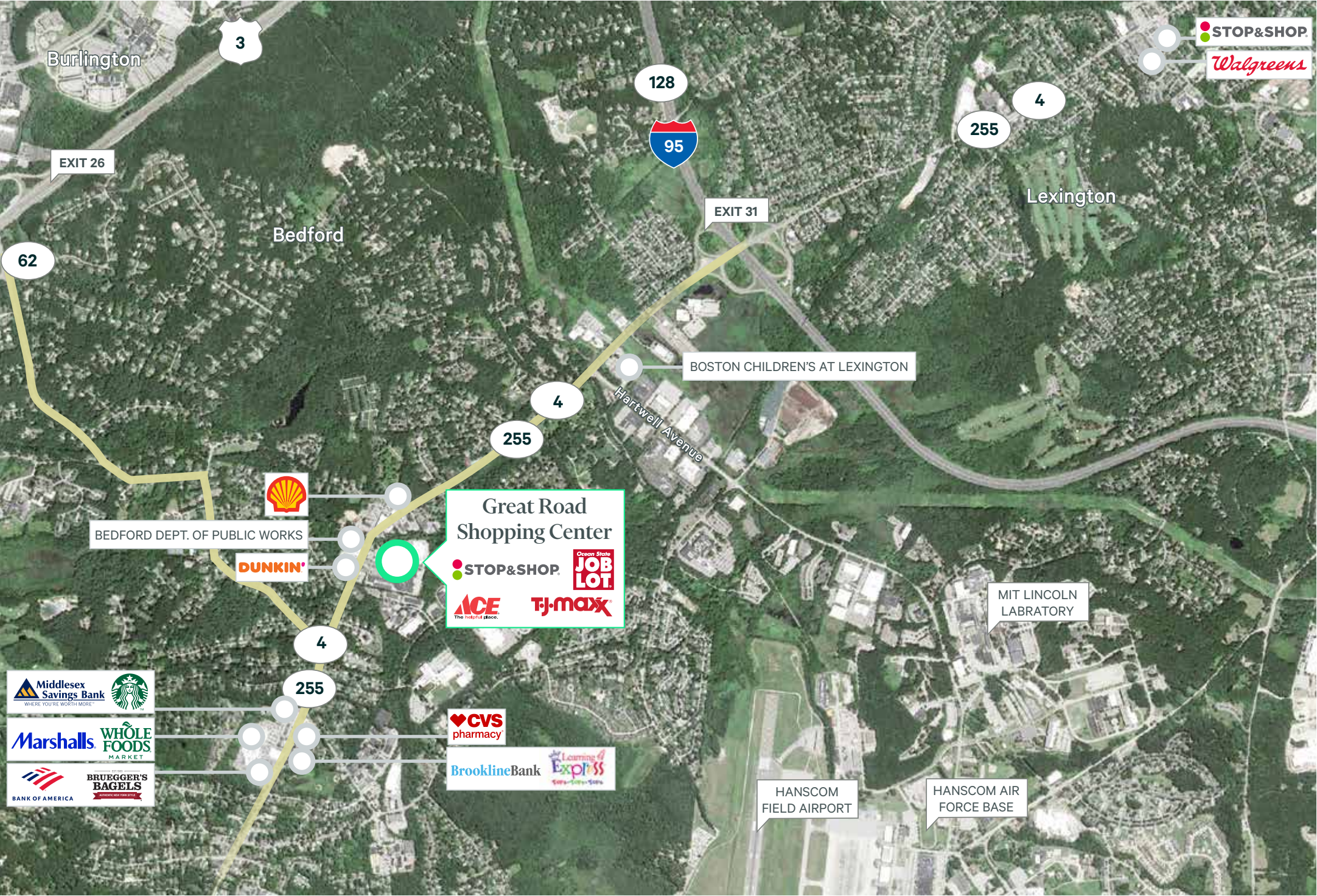
Great Road Shopping Center
297 Great Road
Bedford, Massachusetts



Features

- + Rare junior anchor space available in this market
- + Strong area incomes and demographics
- + Strong grocery-anchored center located close to Interstate 95
- + 1,200 SF, 2,400 SF, 20,950 SF and 29,940 SF available
- + 23,500 cars per day on Great Road

Retail Market



Great Road Shopping Center

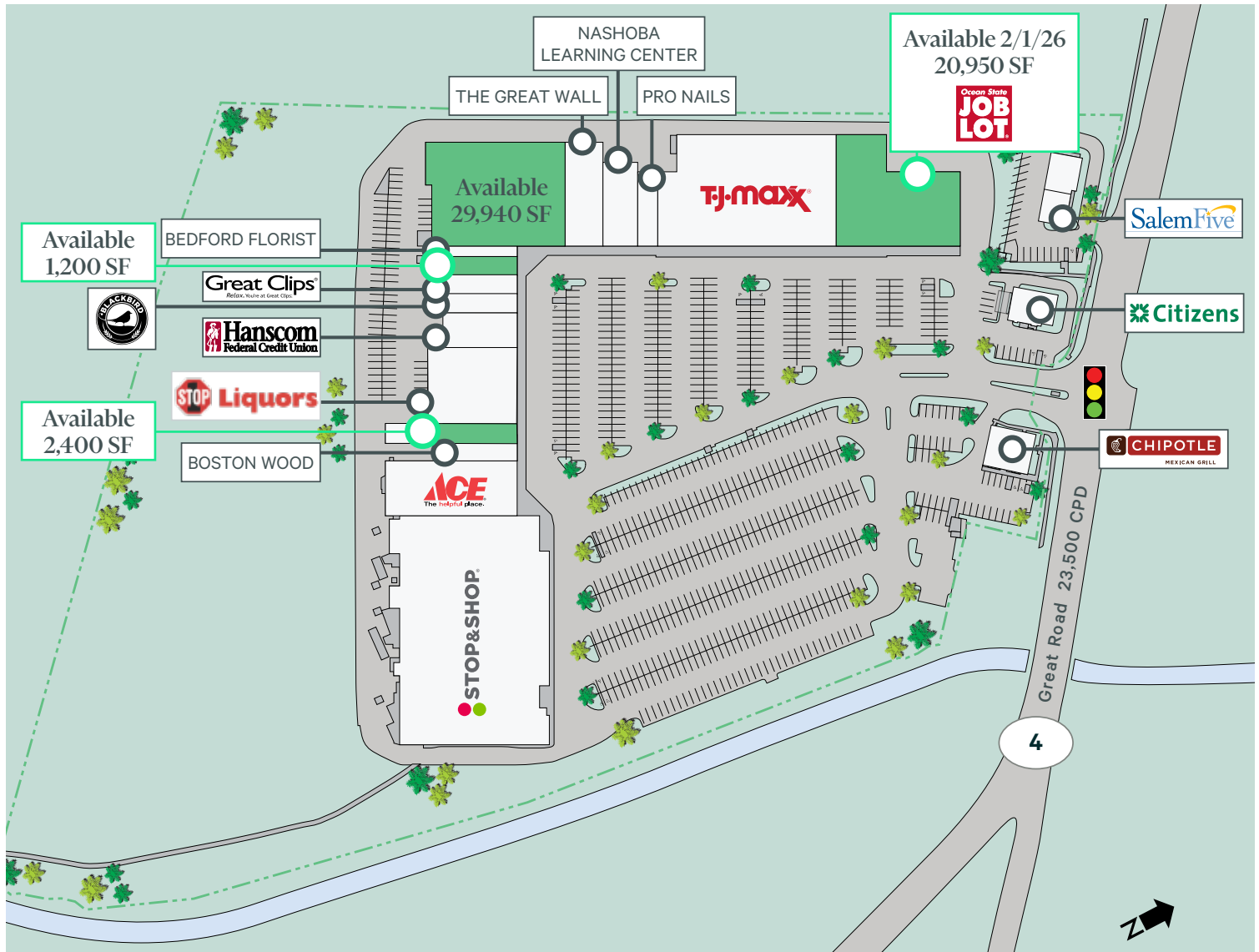


2024 Demographics	1 Mile	3 Miles	5 Miles	7 Miles
Estimated Population	4,837	36,189	113,459	255,668
Estimated Households	1,815	12,705	40,788	94,602
Estimated Average Household Income	\$212,825	\$234,292	\$218,729	\$208,860
Estimated Daytime Population	6,331	69,551	162,493	335,868

Rare Anchor Space

Great Road Shopping Center | 297 Great Road | Bedford, Massachusetts

For Lease



Contact Us

Rob Robledo

Executive Vice President
+1 617 912 6869
rob.robledo@cbre.com

John Ferris

Senior Vice President
+1 617 912 6871
john.ferris@cbre.com

Michael Nolan

Associate
+1 617 774 8344
michael.nolan@cbre.com

© 2025 CBRE, Inc. All rights reserved. This information has been obtained from sources believed reliable, but has not been verified for accuracy or completeness. You should conduct a careful, independent investigation of the property and verify all information. Any reliance on this information is solely at your own risk. CBRE and the CBRE logo are service marks of CBRE, Inc. All other marks displayed on this document are the property of their respective owners, and the use of such logos does not imply any affiliation with or endorsement of CBRE. Photos herein are the property of their respective owners. Use of these images without the express written consent of the owner is prohibited.