

# 475

## CITY CENTER

14th Street, Oakland

CLASS A WORKSPACE IN VIBRANT CITY CENTER LOCATION  
BROAD RANGE OF SUITE SIZES & LAYOUTS



475  
CITY CENTER

CLASS **A**

LEED PLATINUM BUILDING

**UPGRADED**

Lobby & Common Areas

**BEST-IN-CLASS**

Operations

**SECURE**

Key Card Access

**EXCEPTIONAL**

Natural Light

**FULL HVAC**

With Enhanced Filtration System

**ON-SITE**

Management & Security

**SECURE**

Building Parking

**DIRECT ACCESS**

To 12th Street BART

**DEBT FREE OWNER**

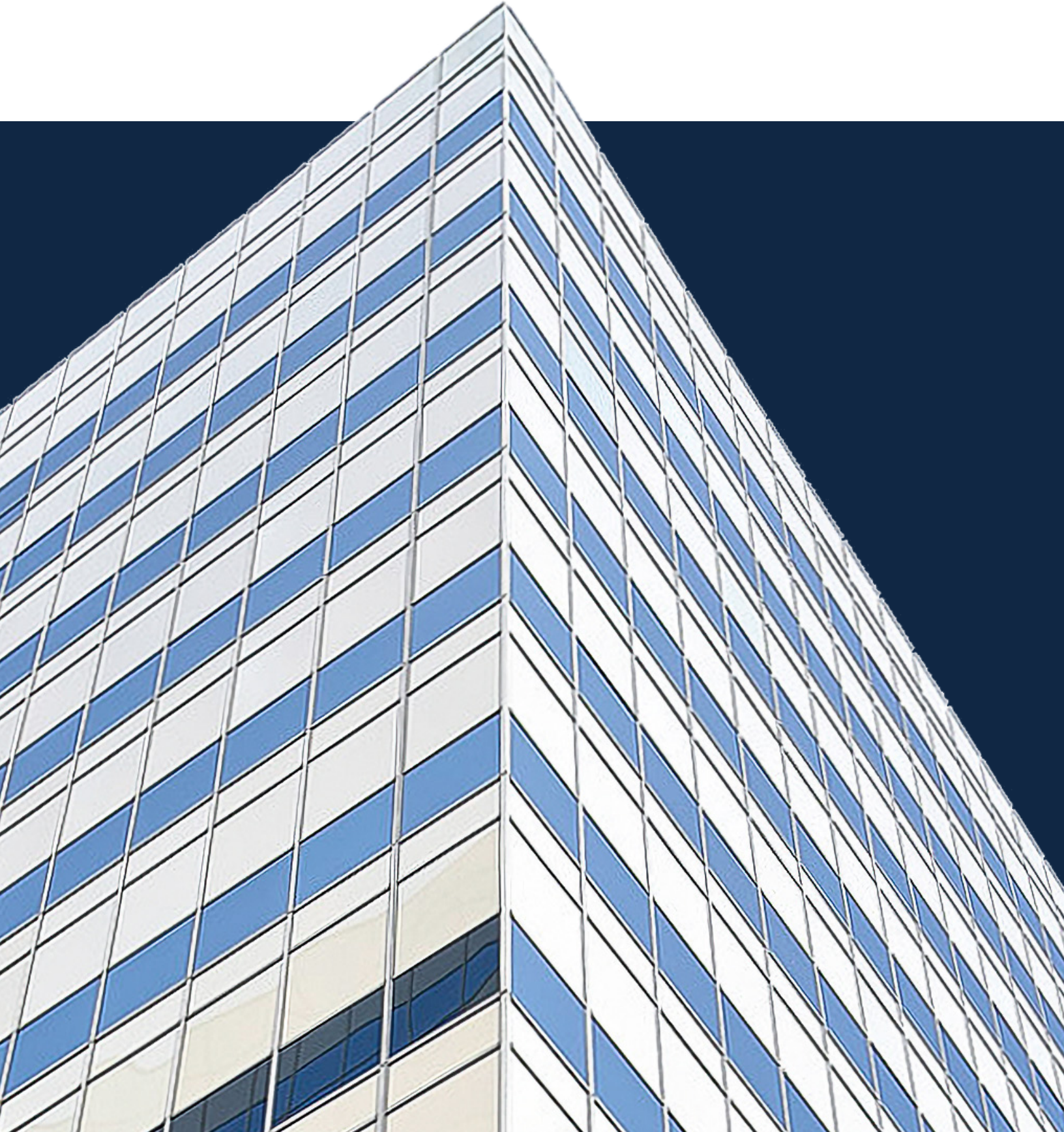
Long Term Hold





475

CITY CENTER



AVAILABILITIES



**ROOFTOP BEEHIVE  
COMING SOON!**

*Urban beekeeping in action,  
supporting biodiversity & diversity*

<u>Suite 100</u>	±4,751 RSF
<u>Suite 200</u>	±2,990 RSF
<u>Suite 230</u>	±2,949 RSF
<u>Suite 520</u>	±2,676 RSF
<u>Suite 500</u>	±4,262 RSF
<u>Suite 550</u>	±8,278 RSF
<u>Suite 600</u>	±6,099 RSF
<u>Suite 800</u>	±6,388 RSF
<u>Suite 850</u>	±8,829 RSF
<u>Suite 900</u>	±15,217 RSF

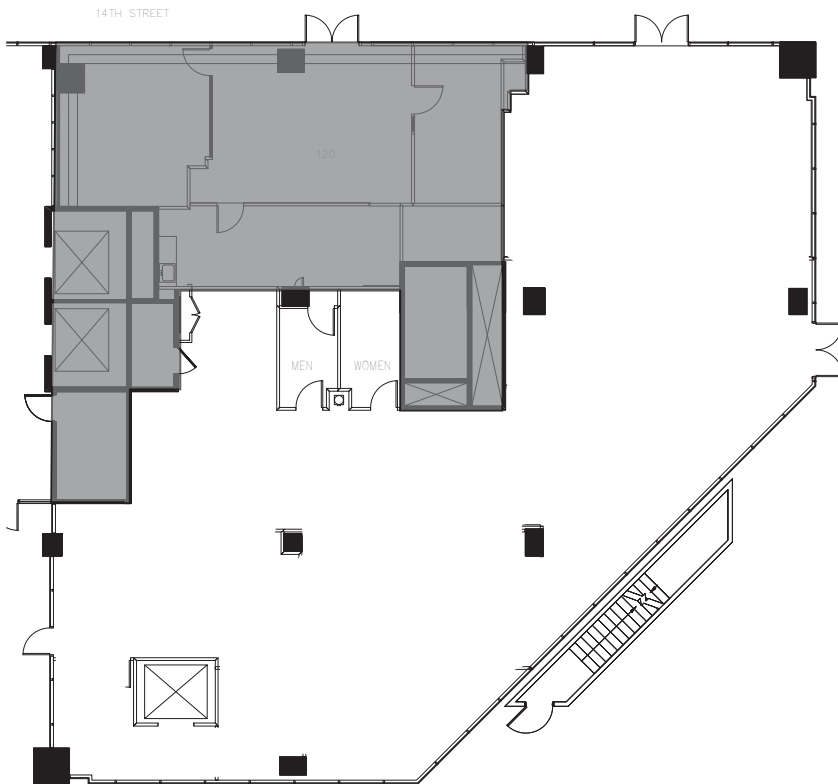
OPPORTUNITIES  
IN EVERY SIZE RANGE

475  
CITY CENTER

FLOORPLANS

BROAD RANGE OF LAYOUTS  
TO FIT YOUR NEEDS

OAKLAND CITY CENTER  
OAKLAND CITY CENTER



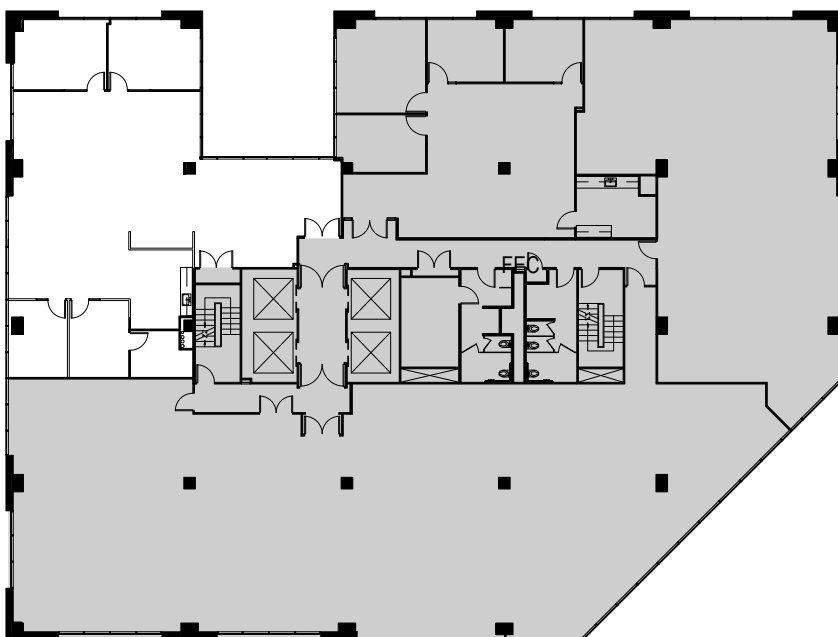
## SUITE 100

±4,751 RSF



[CLICK HERE FOR VIRTUAL TOUR](#)

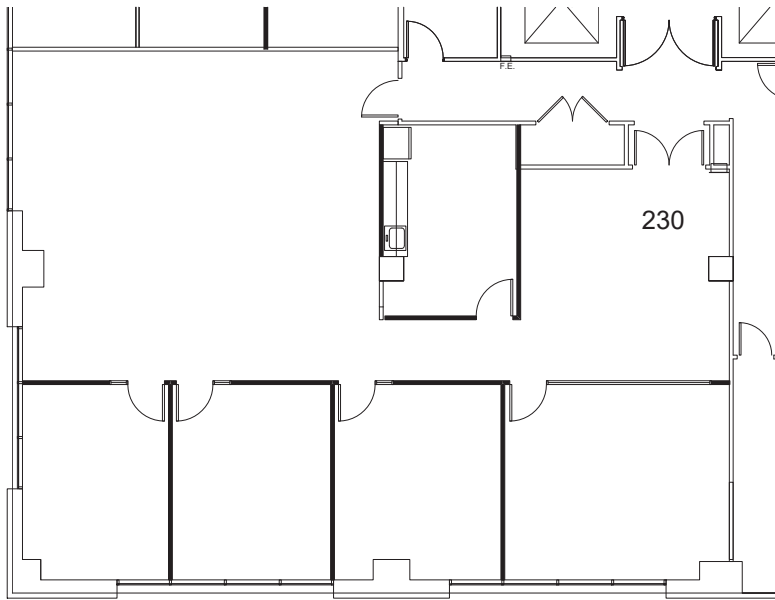
- Ground floor office suite with double door entry, prime visibility from City Center
- High ceilings
- Landlord improvements available
- Divisible



## SUITE 200

±2,990 RSF

- Efficient corner suite
- Double door entry off elevator
- 2 private offices, 2 conference rooms
- Open style kitchen



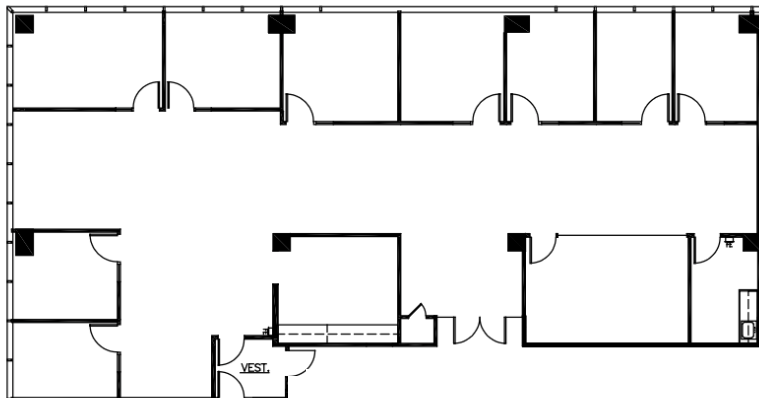
## SUITE 230

±2,949 RSF



[CLICK HERE FOR  
VIRTUAL TOUR](#)

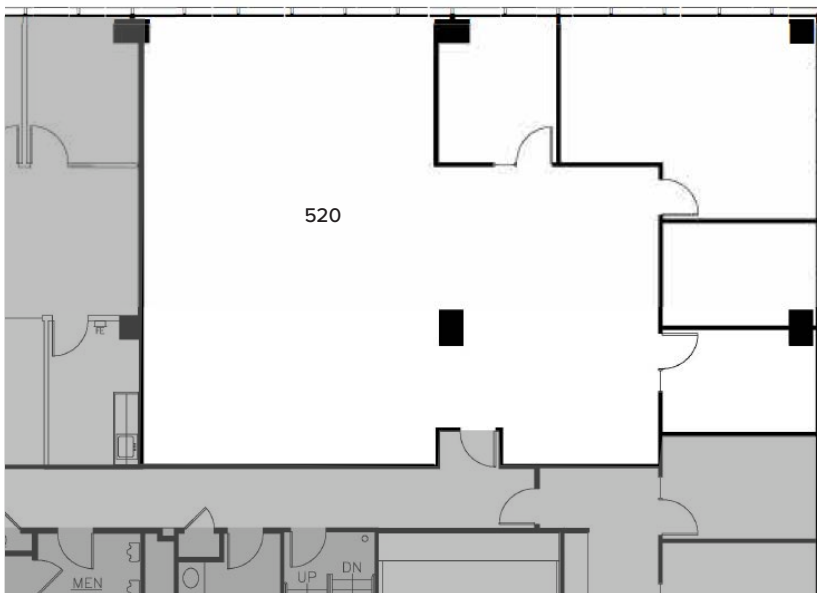
- Newly modernized suite
- 3 private offices
- 1 conference room
- Efficient open area
- Enclosed kitchen area



## SUITE 500

±4,262 RSF

- Available July 1, 2026
- 9 private offices
- 1 conference room
- 1 break room
- 1 copy-production room
- Views to City Hall and Berkeley Hills



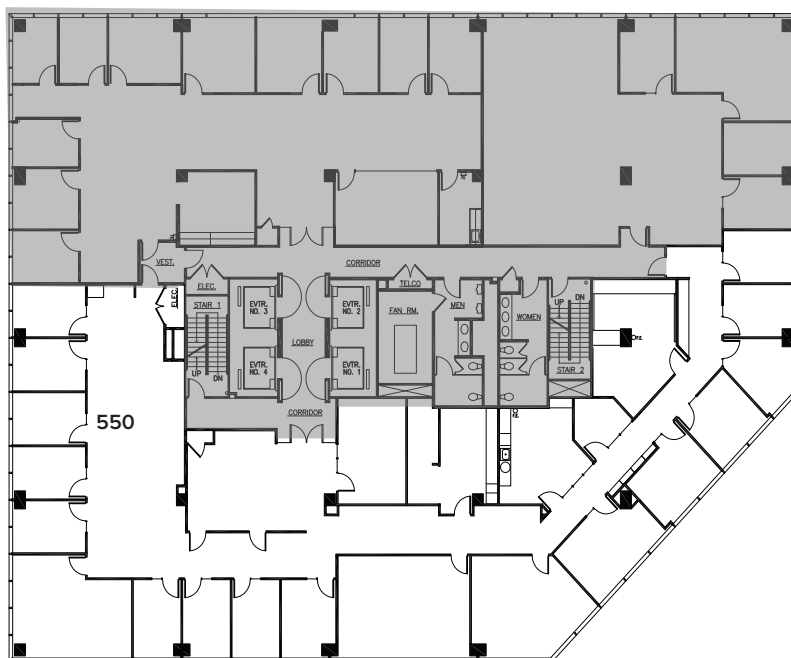
## SUITE 520

±2,676 RSF



[CLICK HERE FOR  
VIRTUAL TOUR](#)

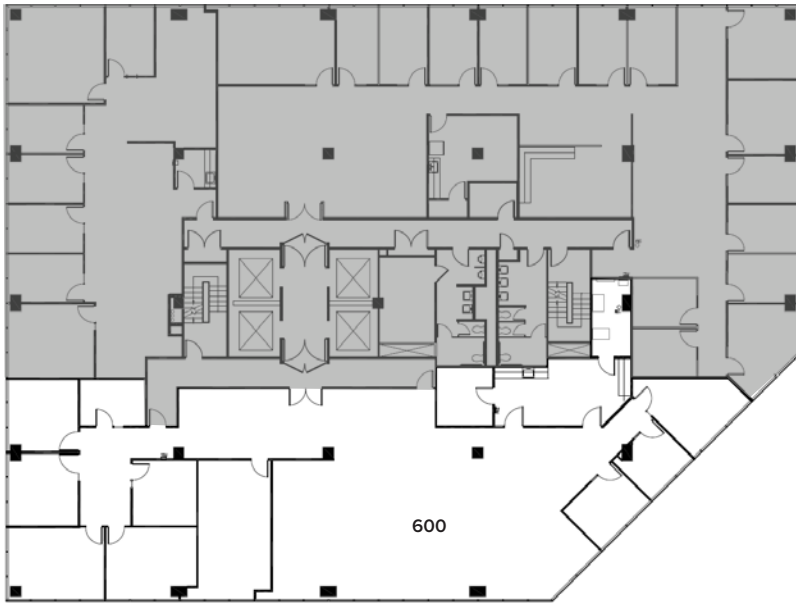
- Efficient corner suite with 3 private offices, 1 conference room, and open area
- Views out to Frank Ogawa Plaza



## SUITE 550

±8,278 RSF

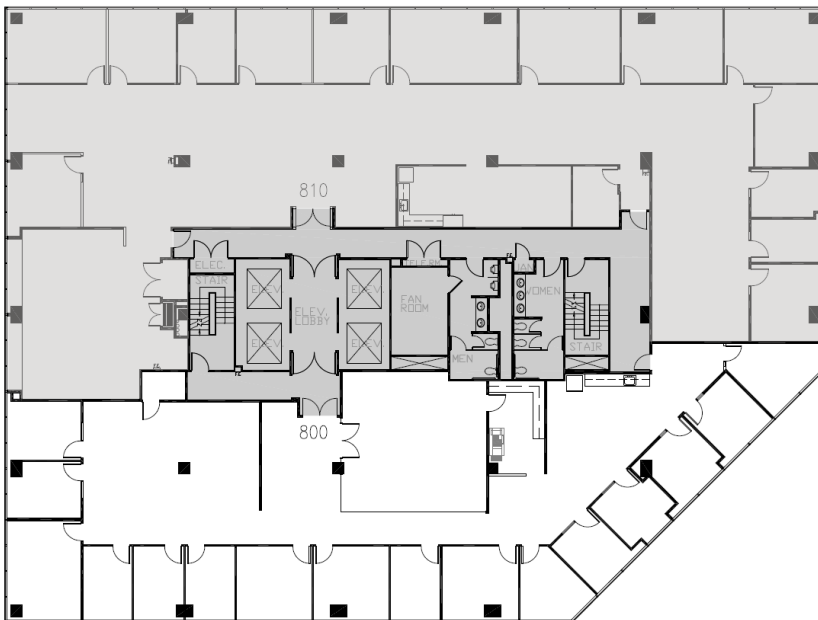
- 15 private offices, and 3 conference rooms
- Kitchen and file/copy room
- Formal reception area
- Ample natural light
- Double door entry off of elevator lobby



## SUITE 600

±6,099 RSF

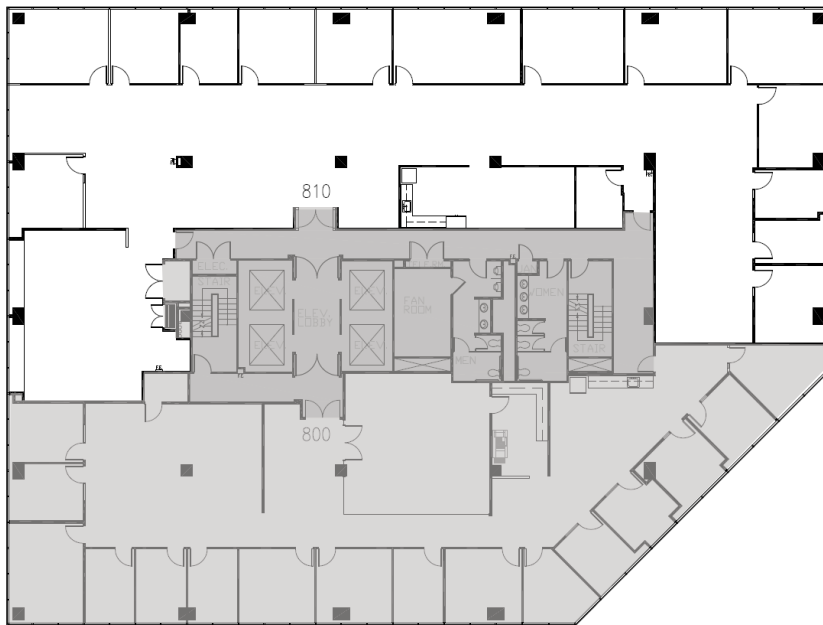
- Prestigious suite with double door entry off elevator
- 9 private offices
- Conference room
- Break room
- Copy room and enclosed IT closet
- City Center views



## SUITE 800

±6,388 RSF

- Door entry immediately off elevator
- 16 private offices
- Large conference room
- Views over City Center



## SUITE 850

± 8,829 RSF



[CLICK HERE FOR VIRTUAL TOUR](#)

- Double door entry immediately off elevator
- 13 Private Offices
- Conference room
- Enclosed copy room, breakroom and IT closet
- Great natural light and views out to Frank Ogawa Plaza



## SUITE 900

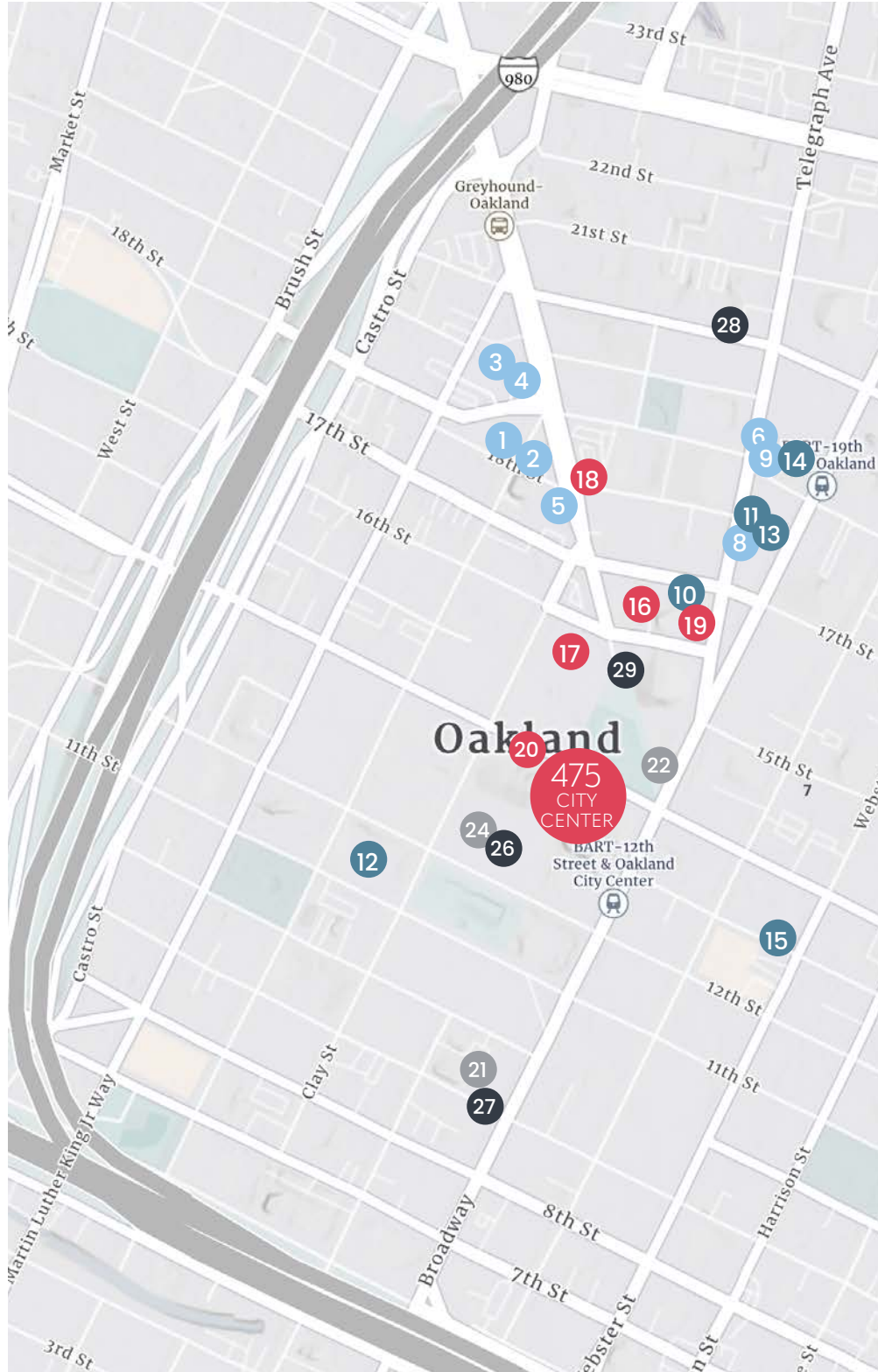
± 15,217 RSF



[CLICK HERE FOR VIRTUAL TOUR](#)

- Prestigious full floor with excellent natural light and Downtown Oakland views

TOP TIER  
AMENITIES





SUPERIOR ACCESS & LOCATION

EATERIES

- 1 Shinmai
- 2 Plenty
- 3 Belly
- 4 Hopscotch
- 5 Curry Up Now
- 6 Palmetto
- 7 Pintoh Thai
- 8 Itanni Ramen
- 9 Xolo Taqueria

SPIRITS

- 10 Bar Shiru
- 11 The Miranda
- 12 Penelope
- 13 The Punchdown
- 14 First Edition
- 15 CoCo Noir Wine Shop & Bar

PARKING

- 16 The Rotunda Garage
- 17 Dalziel Garage
- 18 18th Street Uptown Lot
- 19 Latham Square Garage
- 20 Oakland City Center

COFFEE

- 21 Blue Bottle
- 22 Awaken Café
- 23 Timeless Coffee
- 24 Starbucks
- 25 Coco Café

FITNESS

- 26 The Club at City Center
- 27 Hot Spot Yoga
- 28 Great Western Climbing Gym
- 29 FOUR Elements Fitness



100

TRANSIT SCORE



99

WALK SCORE

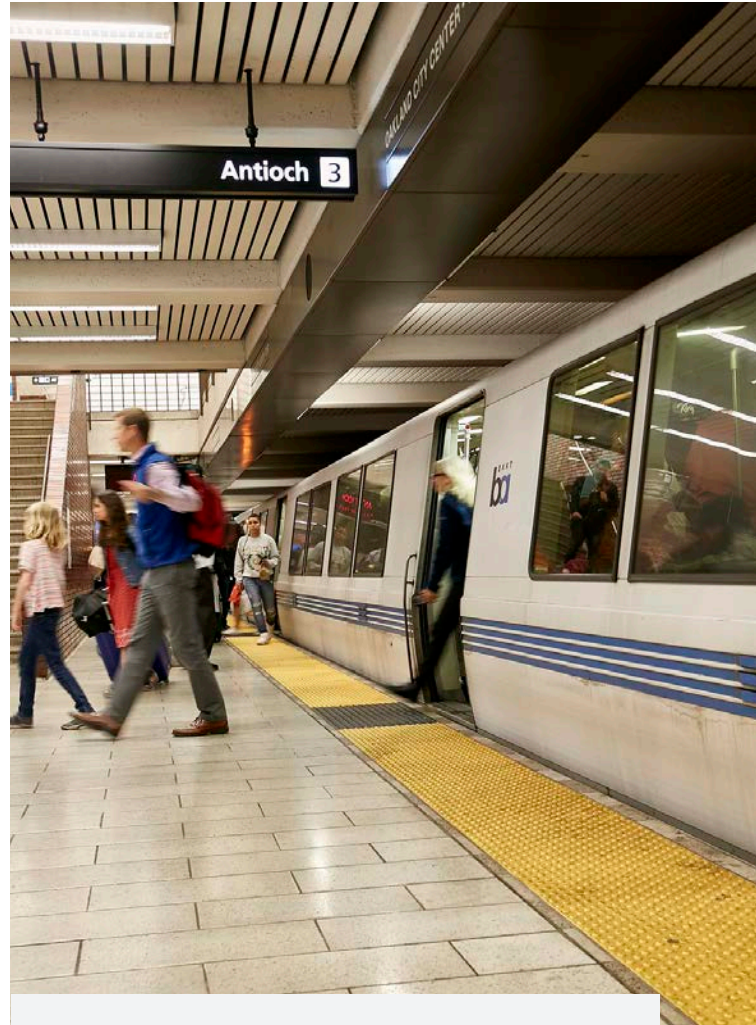
CITY CENTER  
AMENITIES



**BUSINESS SERVICES**

---

Essential business services including dining options for entertaining clients, FedEx Center, underground parking, and the health and fitness facility The Club at City Center.



**TRANSIT ORIENTED**

---

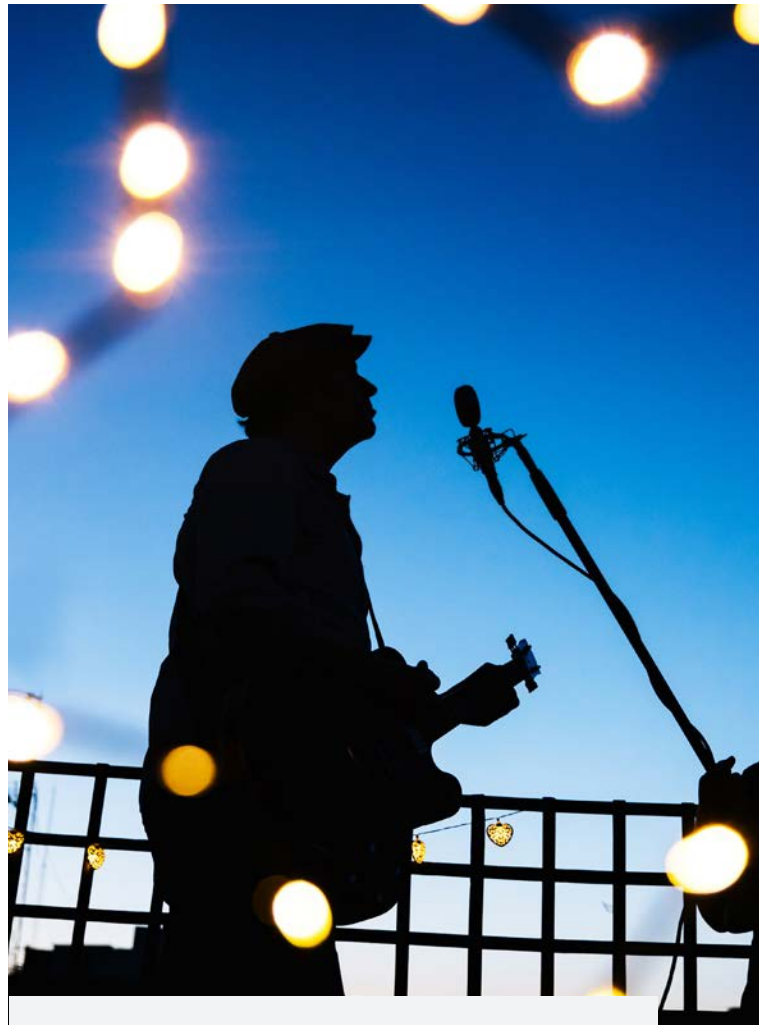
Exclusive City Center entrance to the 12th Street BART station and direct freeway access.



## OCC CONFERENCE CENTER

---

Premier conference space with concierge service offers five flexible-format meeting rooms ideal for tenant meetings, group trainings or events.



## EVENTS & TENANT ACTIVITIES

---

Ongoing events featuring well known regional entertainers and musicians, including the popular Summer Sounds Concert series.

This document has been prepared by Colliers International for advertising and general information only. Colliers International makes no guarantees, representations or warranties of any kind, expressed or implied, regarding the information including, but not limited to, warranties of content, accuracy and reliability. Any interested party should undertake their own inquiries as to the accuracy of the information. Colliers International excludes unequivocally all inferred or implied terms, conditions and warranties arising out of this document and excludes all liability for loss and damages arising there from. This publication is the copyrighted property of Colliers International and/or its licensor(s). ©2026. All rights reserved.

# 475 CITY CENTER

14th Street, Oakland

**Charles F. Allen, LEED AP**

Executive Vice President  
CA Lic #01158267  
charlie.allen@colliers.com  
510.333.8477

**Anthony Shell, LEED® AP**

Executive Vice President  
CA Lic #01743033  
anthony.shell@colliers.com  
415.871.5279

**Amber Merrigan**

Senior Vice President  
CA Lic #01905162  
amber.merrigan@colliers.com  
619.757.4912

The Colliers logo is a blue square with rounded corners, containing the word "Colliers" in white, sans-serif font. Below the text are three horizontal lines in orange, yellow, and blue.

Colliers