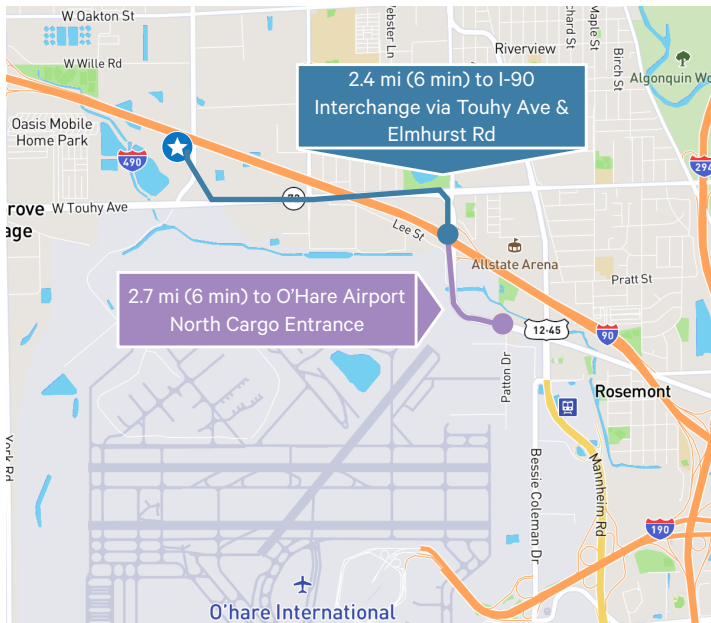


2200 S. Mount Prospect Road

Des Plaines, IL 60018

86,905 SF Available



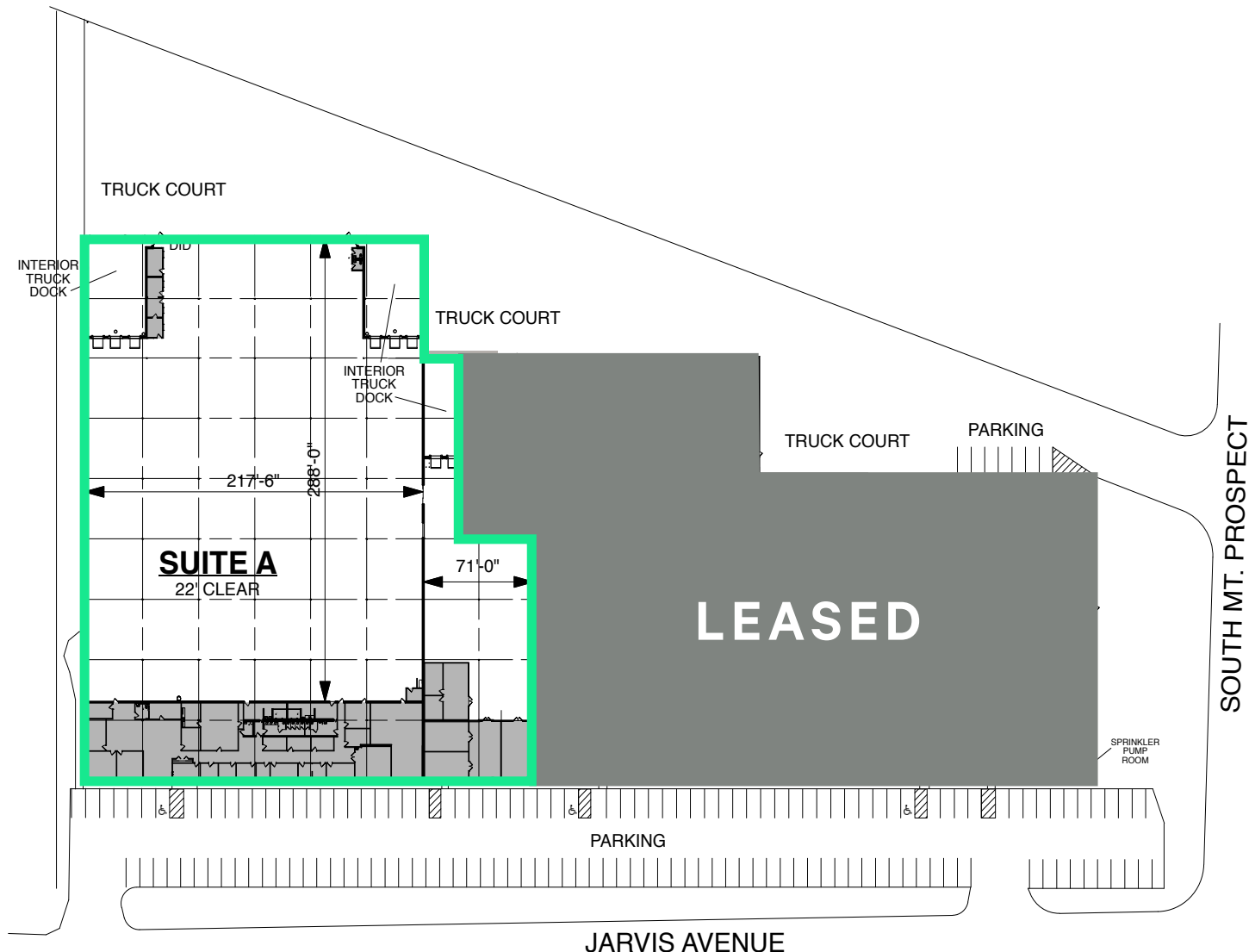
Property Specifications

Building Size:	170,710 SF
Available Size:	86,905 SF
Office Size:	10,783 SF
Warehouse Office Size:	679 SF
Ceiling Height:	20' – 22' clear
Loading:	8 interior docks 1 drive-in door
Date Available:	120 days
Sublease Term Through:	September 30, 2026
Asking Gross Sublease Rate:	\$10.50 PSF

Highlights

- + Close proximity to O'Hare Airport and the North Cargo Entrance (2.7 mi / 6 min)
- + Quick access to Touhy Avenue and I-90 interchange via Elmhurst Road (2.4 mi / 6 min)
- + Exposure/signage opportunity along I-90





Contact Us

Cal Payne

Executive Vice President
+1 312 343 7707
calum.payne@cbre.com

Genna Ohrn

Transaction Manager
+1 708 415 5350
genna.ohrn@cbre.com

© 2023 CBRE, Inc. All rights reserved. This information has been obtained from sources believed reliable, but has not been verified for accuracy or completeness. You should conduct a careful, independent investigation of the property and verify all information. Any reliance on this information is solely at your own risk. CBRE and the CBRE logo are service marks of CBRE, Inc. All other marks displayed on this document are the property of their respective owners, and the use of such logos does not imply any affiliation with or endorsement of CBRE. Photos herein are the property of their respective owners. Use of these images without the express written consent of the owner is prohibited.