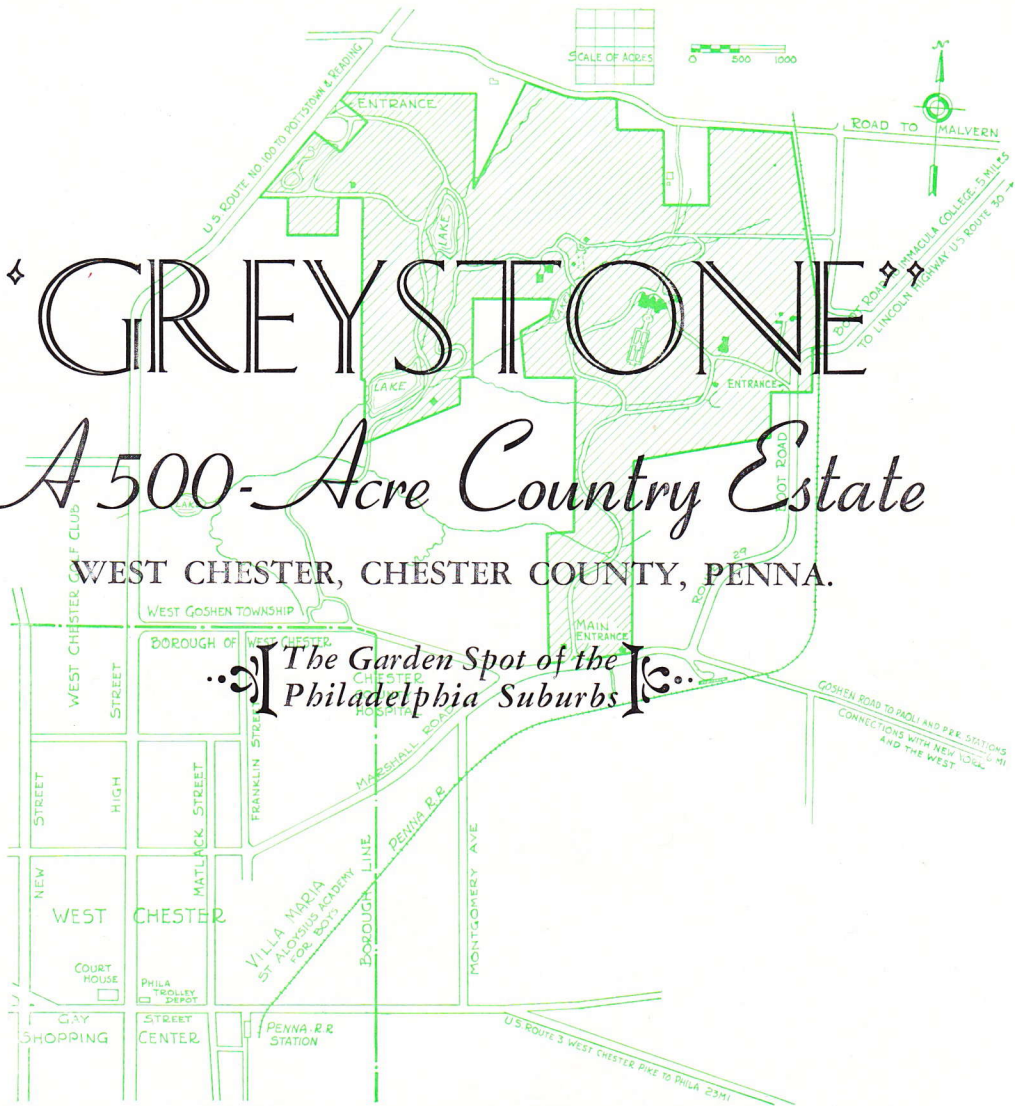


GREYSTONE

A 500-Acre Country Estate

WEST CHESTER, CHESTER COUNTY, PENNA.

The Garden Spot of the Philadelphia Suburbs

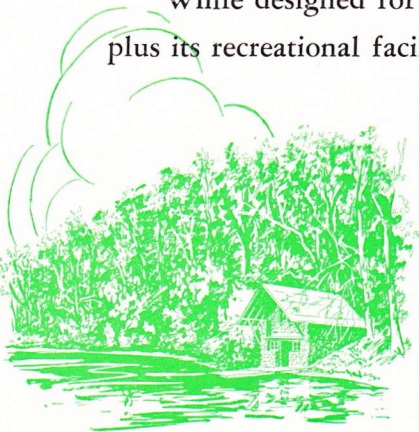




“GREYSTONE” is one of the most imposing country estates in the Philadelphia suburbs. Its woodlands, cultivated fields, formal gardens, rare plantings, streams and three large lakes in a setting of beautiful rolling country, make it a property that must be seen to be appreciated.

While designed for an individual owner, the substantial construction and size of the buildings plus its recreational facilities and productive cultivated fields make Greystone an ideal location for institutional purposes.

The manor house is a three-story English style building of grey stone with tile roof, 60 feet wide and 125 feet long. It is beautifully situated with a commanding and extensive view of the surrounding country.



On the first floor is a large reception hall, library, game room, music room, formal dining room, breakfast room, and adequate service rooms as indicated on the floor plans. Most of these rooms are panelled in oak and all have large open fireplaces.

On the second floor are eight master bedrooms, with five baths, and eight smaller bedrooms, with two baths, and linen rooms, etc. All the master bedrooms have open fireplaces.

On the third floor is a full size bowling alley, shuffleboard, a studio, and several other large rooms suitable for dormitories.

A four-car garage adjoins the manor house; this has sizable housekeeping quarters above.

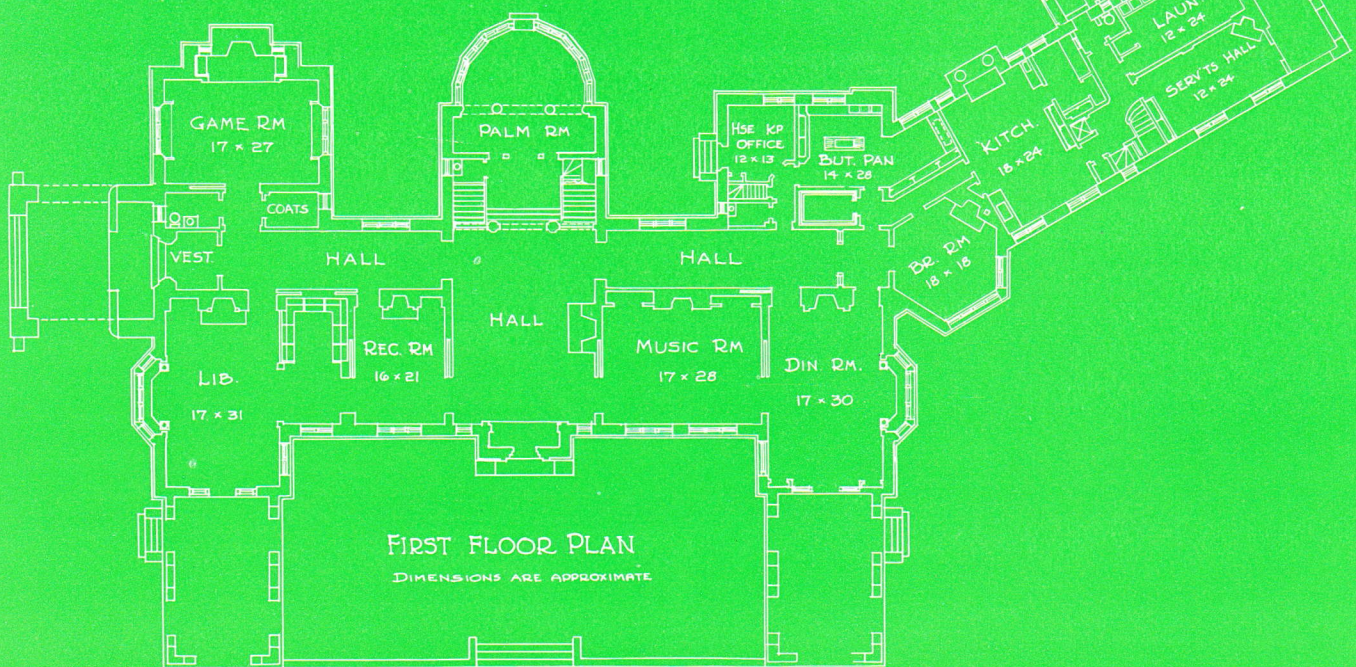
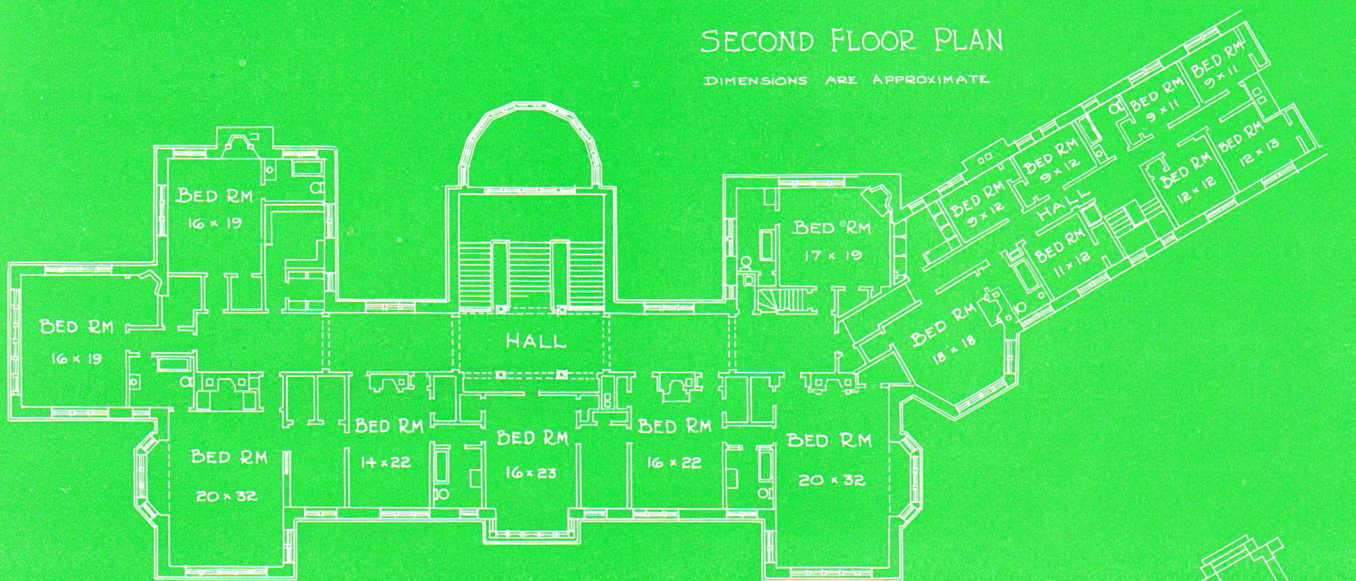
Other buildings on this 500-acre property are superintendent's quarters and coach house, with adequate living quarters for auxiliary employees and stable accommodations for ten horses.

There are also several stone guest houses, and lodges, a boat house, a gate house, machinery sheds and formal gardens, making "Greystone" a well rounded and well equipped country estate, ideal for an institution, home or school.

"Greystone" is for sale either in whole or part.

SECOND FLOOR PLAN

DIMENSIONS ARE APPROXIMATE



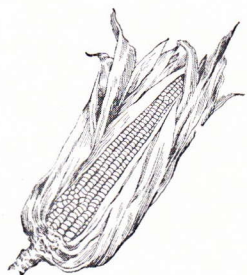
FIRST FLOOR PLAN

DIMENSIONS ARE APPROXIMATE



GREYSTONE VIEWS

1. Italian Garden; 2. Guest House; 3 North View Manor House; 4. Stable and Coach House; 5. Manor Garage.



CORN EXCHANGE NATIONAL BANK
AND TRUST COMPANY
PHILADELPHIA

Real Estate Department, 1510-12 CHESTNUT STREET