

FOR LEASE

1600-1604 LYELL AVE, ROCHESTER, NY 14606



1,000-4,500 +
SF AVAILABLE



60
PARKING SPACES



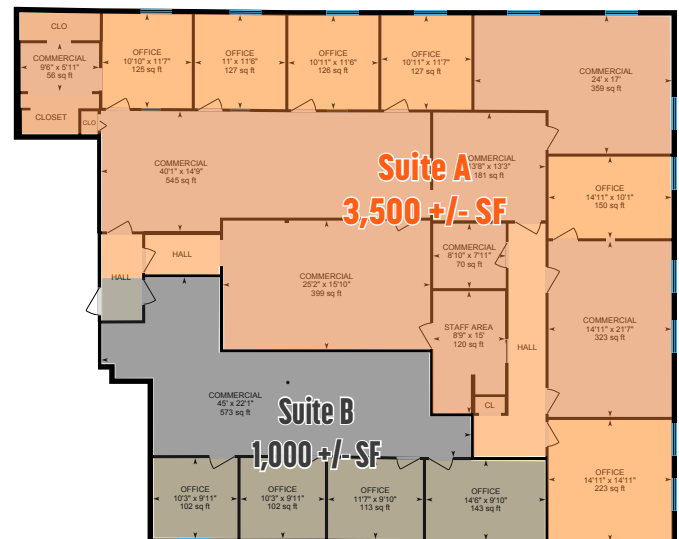
\$8-\$10 PSF
LEASE PRICE

OFFERING SUMMARY

Space Type	Mixed Use/Office
Space Available	4,500 \pm SF
Lease Type	Modified Gross
Parking	60 Spaces
Lease Price	\$8-\$10 PSF

PROPERTY HIGHLIGHTS

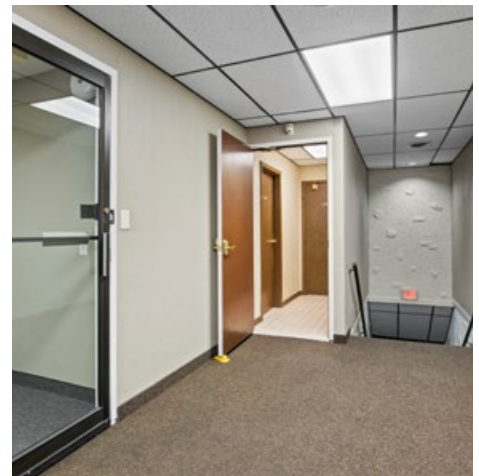
- Office space available the 2nd floor in a mixed-use plaza.
- Located on Lyell Ave, between Adirondack St. & Adelaide St.
- Flexible Lease Term
- Great frontage with high-visibility along Lyell Ave.
- Located on RTS Bus line with easy access to I-390 & Route 490
- Zoned C-2 (Community Center) allowing for a variety of uses



DEMOGRAPHICS	1 Mile	3 Miles	5 Miles
Population	7,246	117,525	295,134
Median HH Income	\$49,498	\$52,575	\$59,989
Households	3,198	48,515	128,991
Employees	8,751	53,589	135,944

FOR LEASE

1600-1604 LYELL AVE, ROCHESTER, NY 14606



Marc Quercia

Licensed Real Estate Salesperson
M: 585.509.0632 O: 585.454.4500 x 115
mquercia@caliberbrokerage.com

Caliber Commercial Brokerage LLC

394 E Henrietta Rd | Rochester, NY 14620
caliberbrokerage.com
585.454.4500