



## 203 E 10th St

203 E 10th St, New York, NY 10003



### Retail Vacancies

[APTSNY.com](http://APTSNY.com)

111 N Central Ave, Suite 400, Hartsdale, NY 10530

[retail@aptsny.com](mailto:retail@aptsny.com)

(917) 444-9777

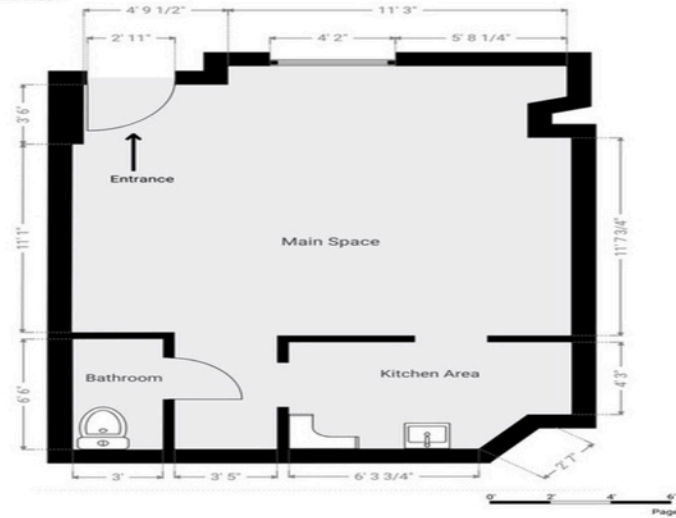


# 203 E 10th St

\$6,000 PER MONTH

201 E 10th First Floor

▼ Ground Floor



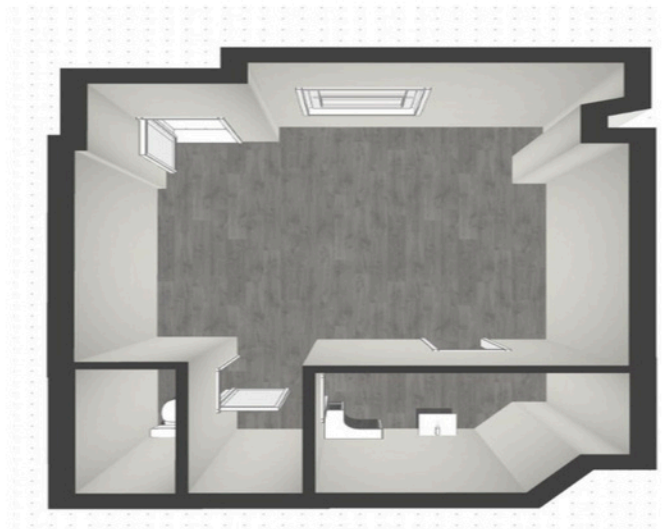
Rental Rate: \$6,000/MONTH

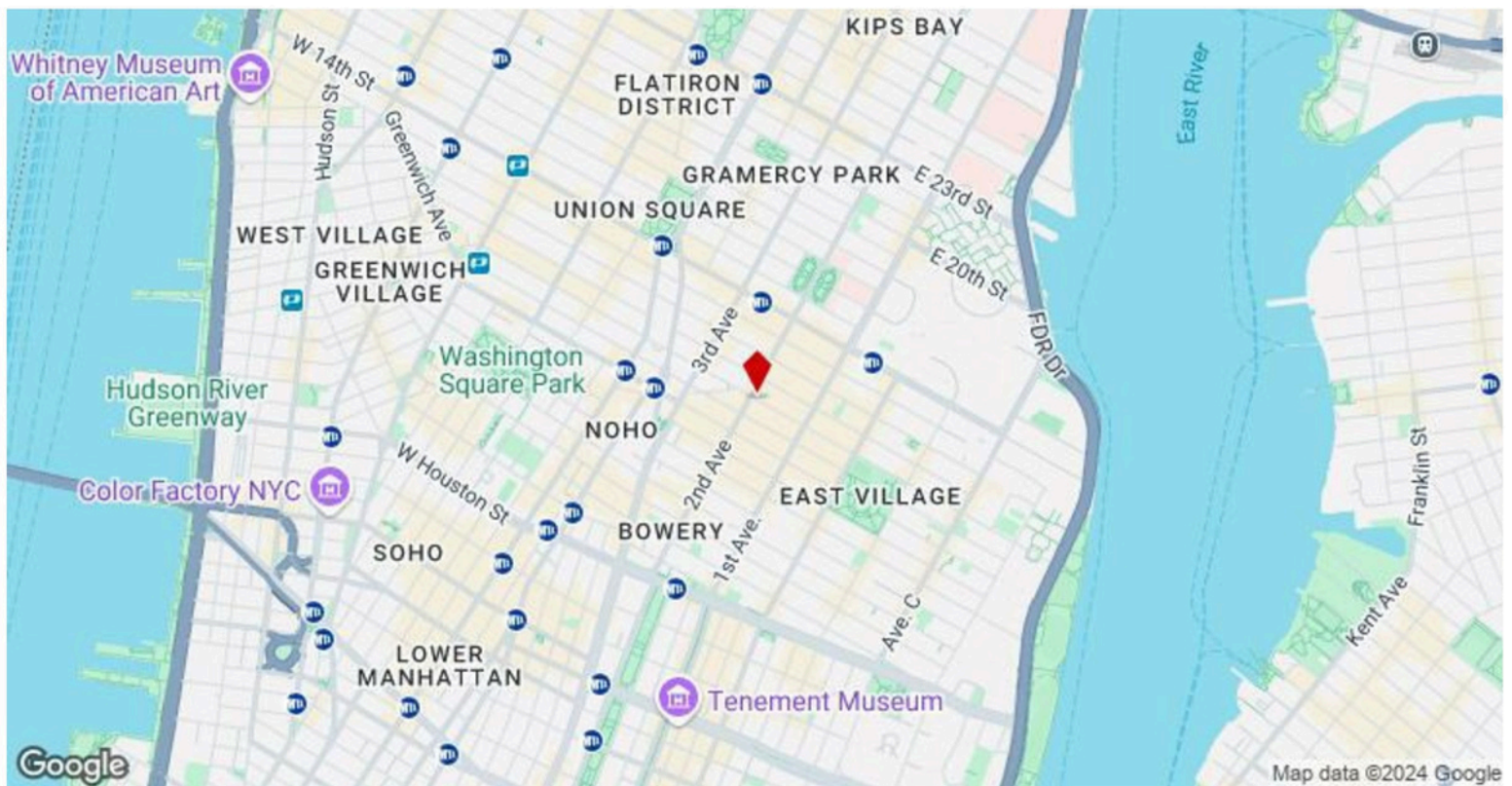
Property Type: Multifamily

Property Subtype: Apartment

Apartment Style: Mid Rise

Year Built: 1900





## 203 E 10th St, New York, NY 10003

Unlock the potential of this 400 sq. ft. ground-level retail space, perfectly positioned on East 10th Street in the heart of Manhattan's East Village. This high-visibility location offers impressive foot traffic and is nestled among thriving boutique shops, trendy cafes, and popular dining destinations. The property features a vanilla box condition, providing a clean, open slate ready for immediate customization to suit your business vision. Additionally, it offers spacious basement storage with convenient sidewalk gate access, ensuring seamless movement of inventory or supplies.

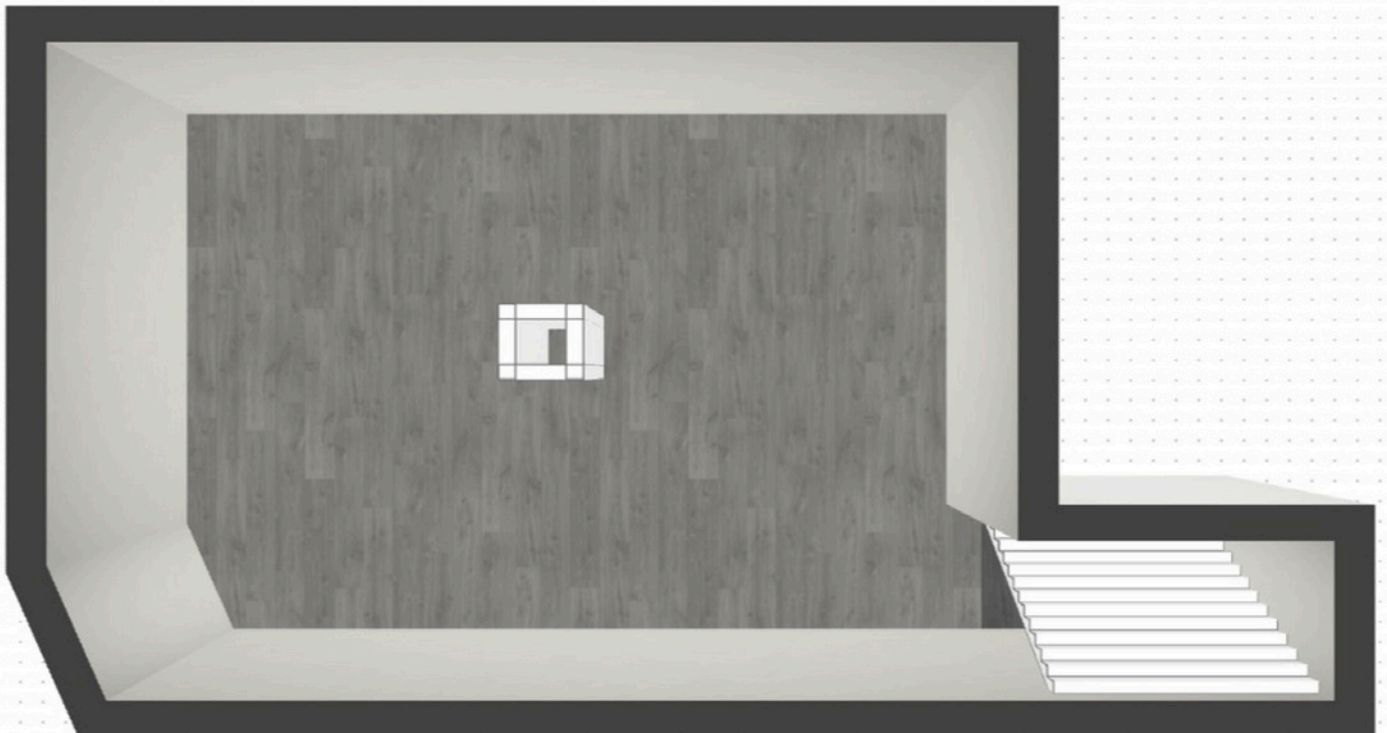
This flexible layout accommodates a variety of business concepts. With an inviting storefront designed to attract passersby, it is located directly in front of a Citi Bike rack, which benefits from additional exposure and accessibility. Priced competitively at \$6,000 per month, this prime opportunity allows you to leverage the vibrant energy of one of New York City's most sought-after neighborhoods, tapping into a built-in community eager to engage with new and established offerings.



# Property Photos

## 201 E 10 Basement

### ▼ Basement - Level 1



# Property Photos



Building Photo



Building Photo



# Property Photos





# Property Photos



Building Photo



Building Photo



## Property Photos

