

A TWO-BUILDING, 511,000 SF INDUSTRIAL DEVELOPMENT  
LOCATED 5 MILES FROM DOWNTOWN DALLAS

**C**  **RE**  
LOGISTICS CENTER



SCAN TO SEE  
PROJECT WEBSITE  
AND VIDEO



PROFESSIONALLY DEVELOPED  
AND OWNED BY:

**CROW  
HOLDINGS**  
INDUSTRIAL

**CORE30**

5323 LAWNVIEW AVENUE, DALLAS, TX 75227

**45,000 - 511,000 SF AVAILABLE FOR LEASE**

PROFESSIONALLY  
LEASED BY:

**STREAM**

# SITE PLAN

## BUILDING 1

Size:	300,347 SF
Dimensions:	420' x 692'
Office:	BTS
Clear Height:	36'
Loading Configuration:	Cross Dock
Dock Doors:	68 (9' x 10')
Oversized Dock Doors:	4 (12' x 14')
Column Spacing:	54'w x 50'd
Staging Bay:	60'
Trailer Parks:	57 (Expandable)
Car Parks:	187
Sprinkler System:	ESFR
Truck Court:	135' - 185'

## BUILDING 2

Size:	210,653 SF
Dimensions:	210' x 980'
Office:	BTS
Clear Height:	36'
Loading Configuration:	Front Load
Dock Doors:	50 (9' x 10')
Oversized Dock Doors:	2 (12' x 14')
Column Spacing:	54'w x 50'd
Staging Bay:	60'
Trailer Parks:	30 (Expandable)
Car Parks:	168
Sprinkler System:	ESFR
Truck Court:	135' - 185'



PROFESSIONALLY DEVELOPED  
AND OWNED BY:

**CROW HOLDINGS**  
INDUSTRIAL

FOR ADDITIONAL INFORMATION PLEASE CONTACT:

**MATT DORNAK, SIOR**  
 214.267.0461  
 mdornak@streamrealty.com

**RIDLEY CULP**  
 214.560.2422  
 ridley.culp@streamrealty.com

PROFESSIONALLY  
LEASED BY:

**STREAM**

# BUILDING 1



Size:	300,347 SF
Dimensions:	420' x 692'
Office:	BTS
Clear Height:	36'
Loading Configuration:	Cross Dock
Dock Doors:	68 (9' x 10')
Oversized Dock Doors:	4 (12' x 14')
Column Spacing:	54'w x 50'd
Staging Bay:	60'
Trailer Parks:	57 (Expandable)
Car Parks:	187
Sprinkler System:	ESFR
Truck Court:	135' - 185'

PROFESSIONALLY DEVELOPED  
AND OWNED BY:



FOR ADDITIONAL INFORMATION PLEASE CONTACT:

**MATT DORNAK, SIOR**  
214.267.0461  
✉ [mdornak@streamrealty.com](mailto:mdornak@streamrealty.com)

**RIDLEY CULP**  
214.560.2422  
✉ [ridley.culp@streamrealty.com](mailto:ridley.culp@streamrealty.com)

PROFESSIONALLY  
LEASED BY:



# Building 2



Size:	210,653 SF
Dimensions:	210' x 980'
Office:	BTS
Clear Height:	36'
Loading Configuration:	Front Load
Dock Doors:	50 (9' x 10')
Oversized Dock Doors:	2 (12' x 14')
Column Spacing:	54'w x 50'd
Staging Bay:	60'
Trailer Parks:	30 (Expandable)
Car Parks:	168
Sprinkler System:	ESFR
Truck Court:	135' - 185'

PROFESSIONALLY DEVELOPED  
AND OWNED BY:

**CROW**  
**HOLDINGS**  
INDUSTRIAL

FOR ADDITIONAL INFORMATION PLEASE CONTACT:

**MATT DORNAK, SIOR**

214.267.0461

✉ [mdornak@streamrealty.com](mailto:mdornak@streamrealty.com)

**RIDLEY CULP**

214.560.2422

✉ [ridley.culp@streamrealty.com](mailto:ridley.culp@streamrealty.com)

PROFESSIONALLY  
LEASED BY:

**STREAM**

# Location

## LOCATION HIGHLIGHTS

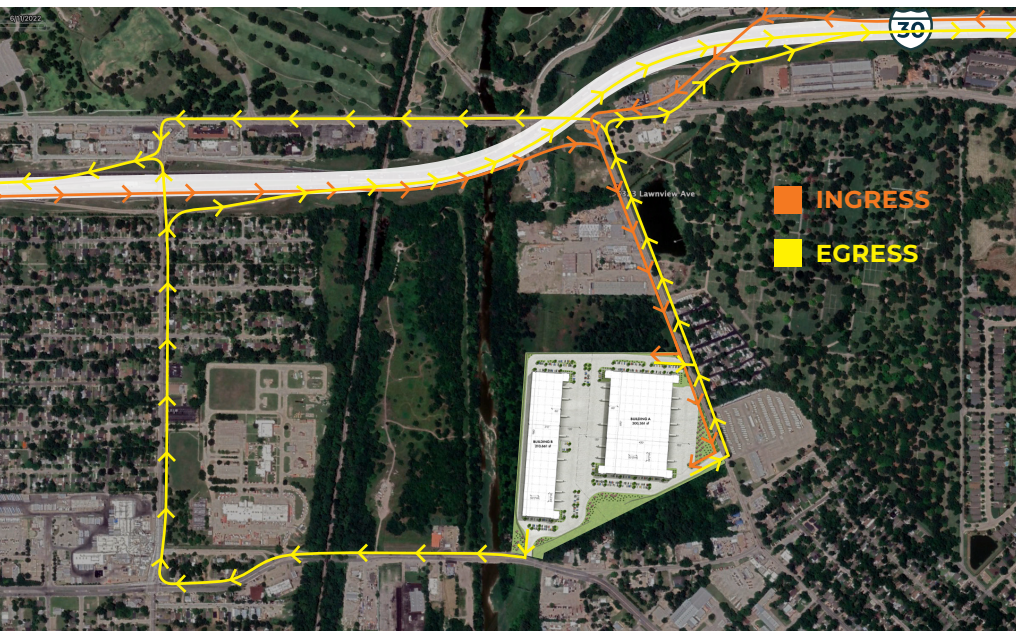
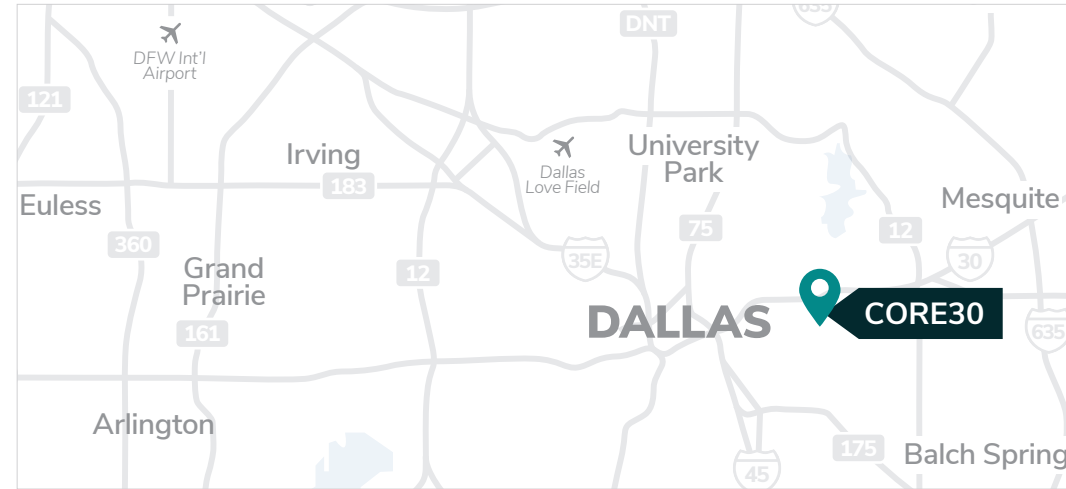
Population from Site:

5 Miles	377,125
10 Miles	1,322,037
20 Miles	3,399,495

- Minutes from downtown Dallas
- Direct access to I-30
- Located in a dense labor region

## DRIVE TIMES

Dallas CBD	5 Miles
Dallas Love Field	10.5 Miles
DFW Airport	25 Miles
I-30	0.5 Miles
I-635	6.5 Miles
I-20	13 Miles
I-45	5.5 Miles
I-35	6 Miles



PROFESSIONALLY DEVELOPED  
AND OWNED BY:



FOR ADDITIONAL INFORMATION PLEASE CONTACT:

**MATT DORNAK, SIOR**  
 214.267.0461  
 ✉️ [mdornak@streamrealty.com](mailto:mdornak@streamrealty.com)

**RIDLEY CULP**  
 214.560.2422  
 ✉️ [ridley.culp@streamrealty.com](mailto:ridley.culp@streamrealty.com)

PROFESSIONALLY  
LEASED BY:

