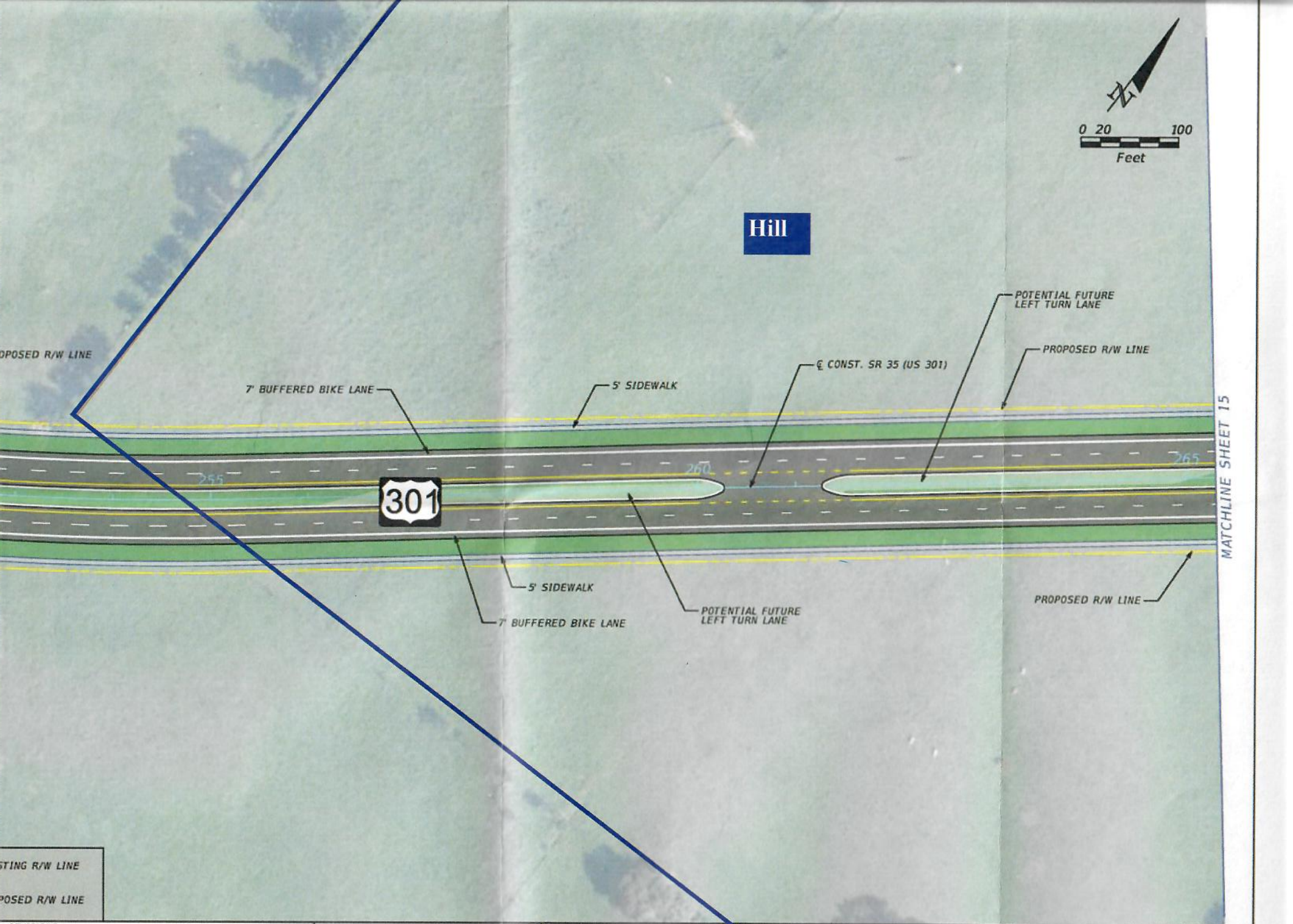


Hill



MATCHLINE SHEET 15

EXISTING R/W LINE
PROPOSED R/W LINE

REVISIONS	
DATE	DESCRIPTION

STATE OF FLORIDA
DEPARTMENT OF TRANSPORTATION

ROAD NO.	COUNTY	FINANCIAL PROJECT ID
SR 35	SUMTER	430132-1-22-01

**US 301 PD&E STUDY
RECOMMENDED ALTERNATIVE**

SHEET NO.
14