

# Sublease

Office



## 2130 Enterprise St. SE

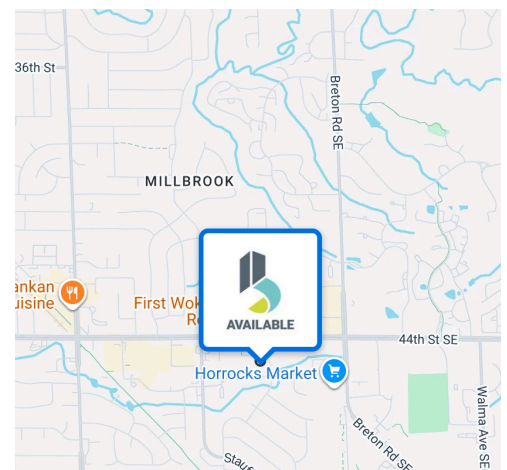
Kentwood, MI, 49508

Suite 102 at 2130 Enterprise St SE offers 2,500 SF of well-maintained office space available for sublease in a highly accessible Kentwood location. This turnkey suite features a functional layout ideal for a variety of professional users, with ample on-site parking for both employees and clients. Offered on a gross lease, this opportunity provides simplified budgeting with minimal additional expenses. Conveniently situated just minutes from the Breton Road corridor and 44th Street, tenants will benefit from strong surrounding amenities, easy access, and a central position within the greater Grand Rapids market.

### Highlights

- Prime Breton corridor location with excellent visibility and easy access for clients and staff
- Lower-level flexible 2,500 SF configuration ideal for professional office, medical, or service users (8 Offices/Kitchenette/Lobby)
- Ample on-site parking and convenient access for seamless daily operations

<b>Leasable</b>	2,500 SF
<b>Lease Rate</b>	\$2,800/Month (Gross)
<b>Date Available</b>	6/1/2026



**Teresa Datema**  
Advisor, Healthcare Facilities  
tdatema@bradleyco.com  
c 616.309.7395

**Jordan Wenzel**  
Advisor  
jwenzel@bradleyco.com  
c 616.206.7658

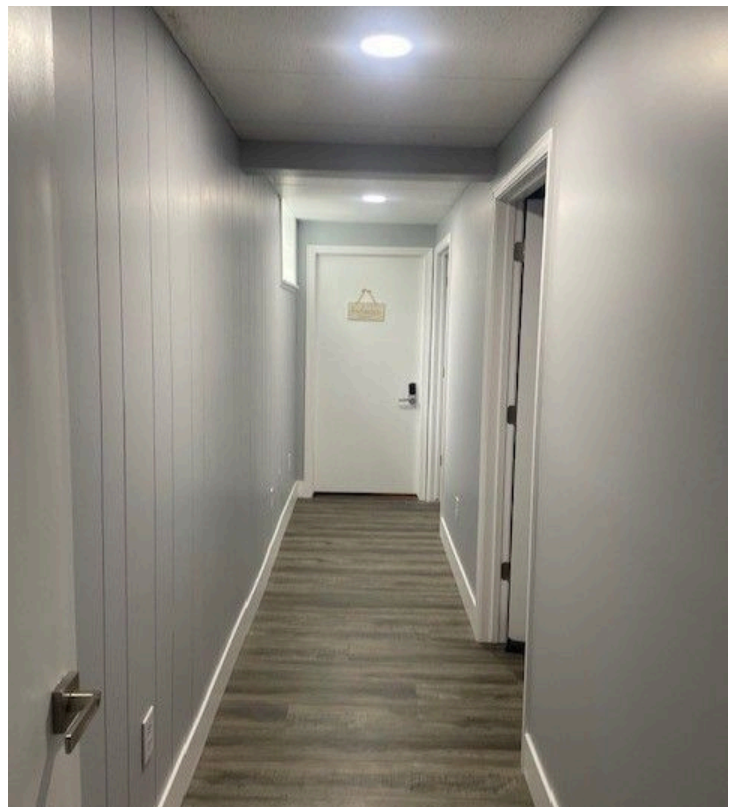
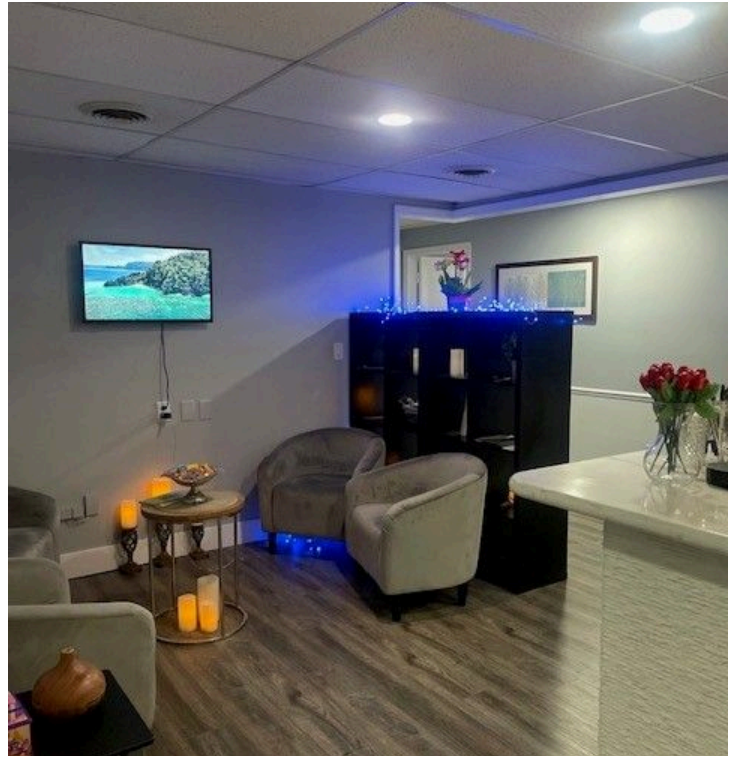
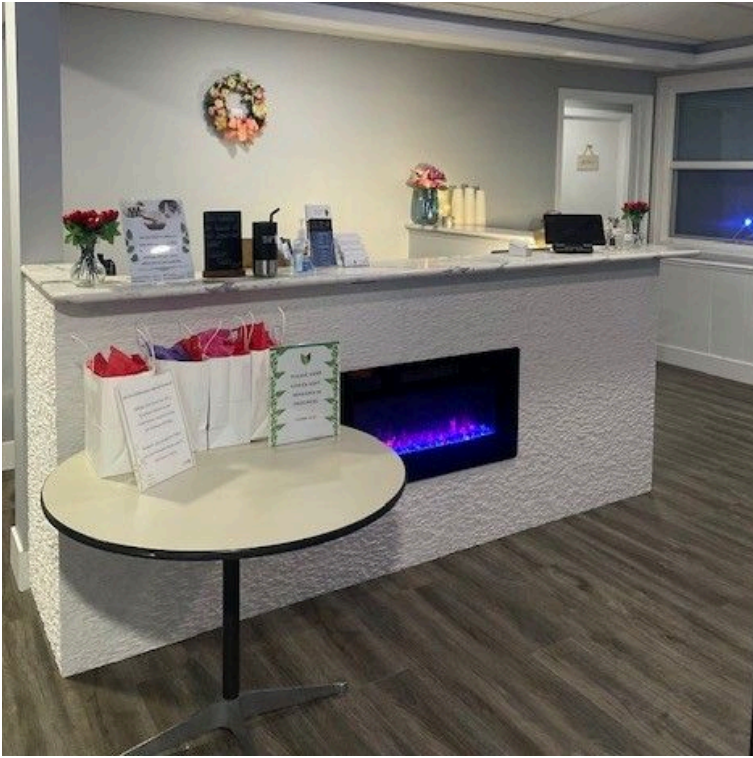
# Exterior Photos

2130 Enterprise St. SE, Kentwood, MI 49508



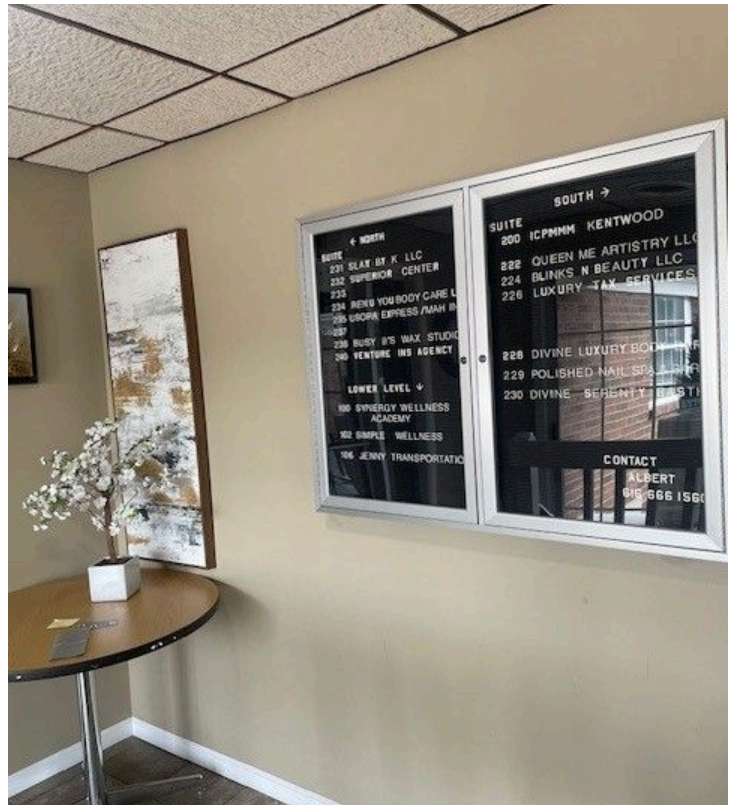
# Interior Photos

2130 Enterprise St. SE, Kentwood, MI 49508



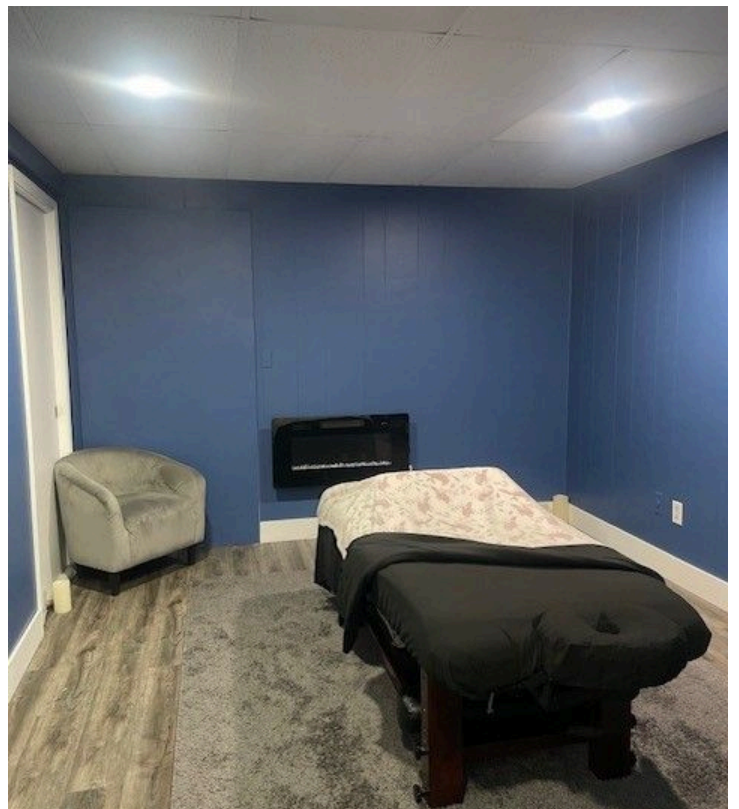
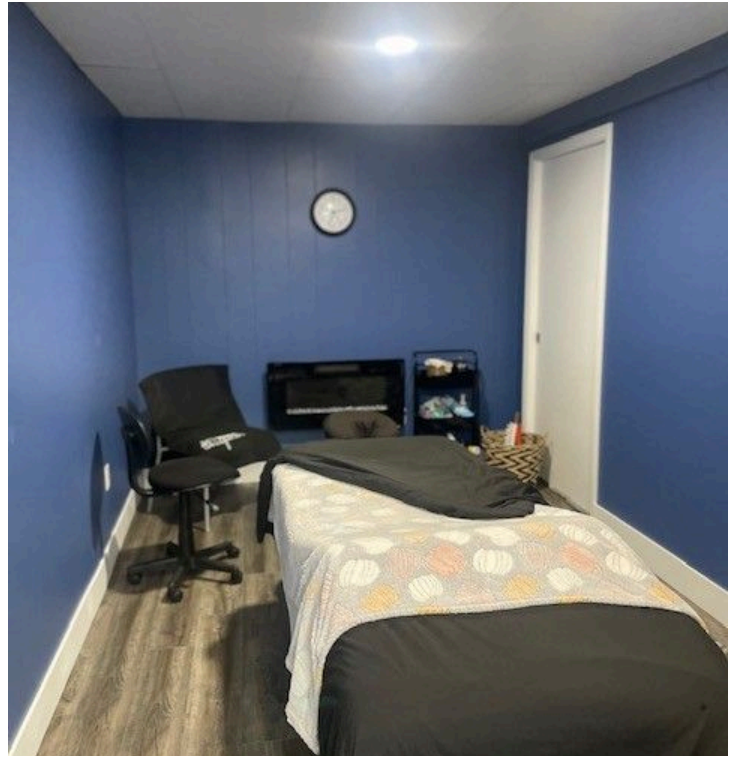
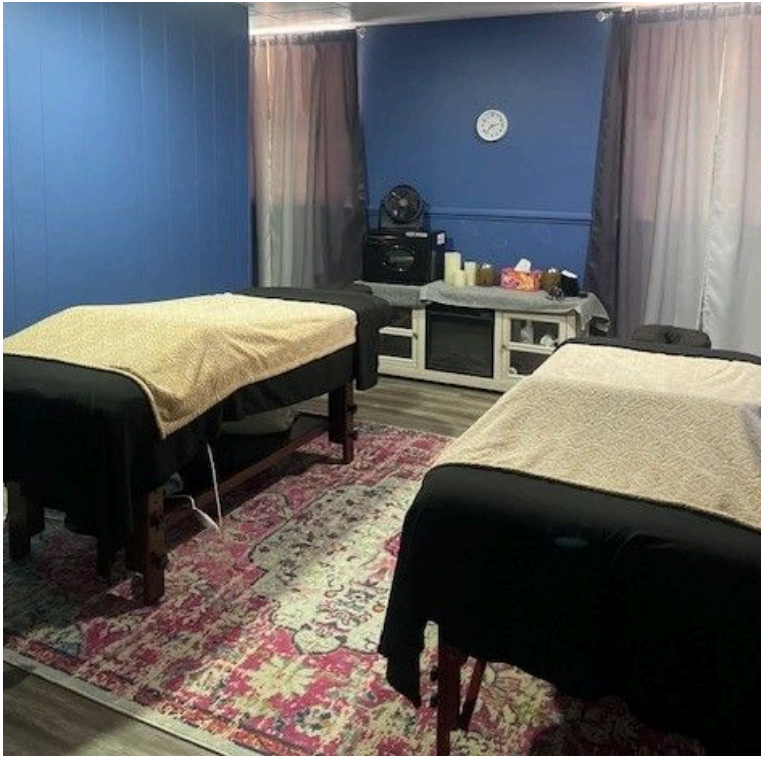
# Interior Photos

2130 Enterprise St. SE, Kentwood, MI 49508



# Interior Photos

2130 Enterprise St. SE, Kentwood, MI 49508



# Retailer Map

2130 Enterprise St. SE, Kentwood, MI 49508



Keyboard shortcuts | Imagery ©2026 Airbus, CNES / Airbus, Landsat / Copernicus, Maxar Technologies | Terms | Report

# Aerial Map

2130 Enterprise St. SE, Kentwood, MI 49508

