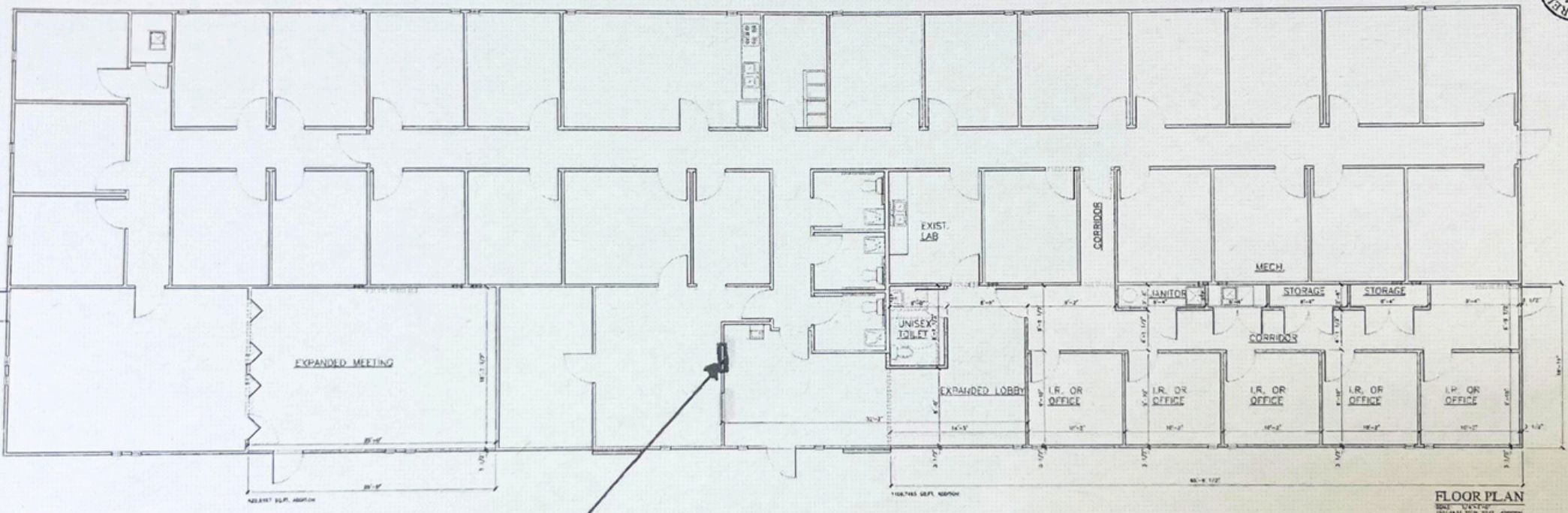


Handwritten notes and scribbles at the top of the page, partially obscured by a white sticker.



NEW (2ND) TRANSACTION WINDOW

FLOOR PLAN
SCALE: 1/8" = 1'-0"
NOT TO SCALE



JOHN G. BEVERLY • ARCHITECT
A LEASE SPACE ADDITION FOR
TDCJ - TEMPLE PAROLE OFFICE
1100 W. 12TH ST. SUITE 100
TEMPLE, TEXAS 76788
(817) 298-1110

DATE: 12/26/10
DRAWING: THIS SHEET
PROJECT: TDCJ PAROLE OFFICE
DRAWN BY: J.G.B.
CHECKED BY: J.G.B.

