



Panama City Beach Pkwy

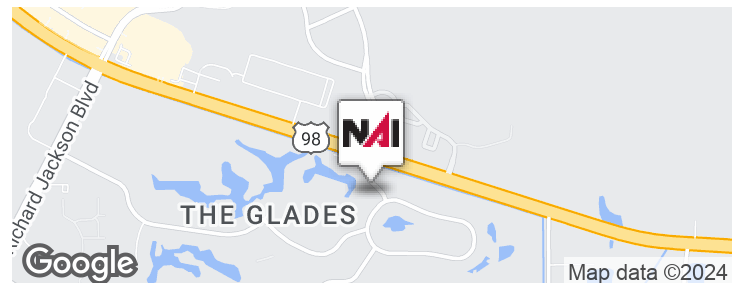
Panama City Beach, Florida 32407

Property Highlights

- +/-1.35 Acres
- +/-300' Highway Frontage
- Hard corner, lighted intersection
- Offsite master storm water retention in place
- All utilities, access road, and drainage infrastructure in place

Property Overview

This site, and last remaining hard corner available, is one of six commercial lots fronting Panama City Beach Pkwy (HWY 98). Panama City Beach Pkwy has 52,000 trips per day and this site has frontage of 300 feet. This major arterial road has nearby national retailers Home Depot, Chick-fil-a, Starbucks, as well as Publix Shopping Center. The 10X Living Apartment complex is across the highway as well as a residential neighborhood behind the property site. The property consists of offsite master storm water retention in place with all utilities stubbed to the site and delivered pad ready.



Offering Summary

Lease Rate:	\$200,000.00 per year (Development Opportunity)
Lot Size:	1.35 Acres

For More Information

Patrick Jones, SIOR

C: 850 814 5878
patrick@talcor.com



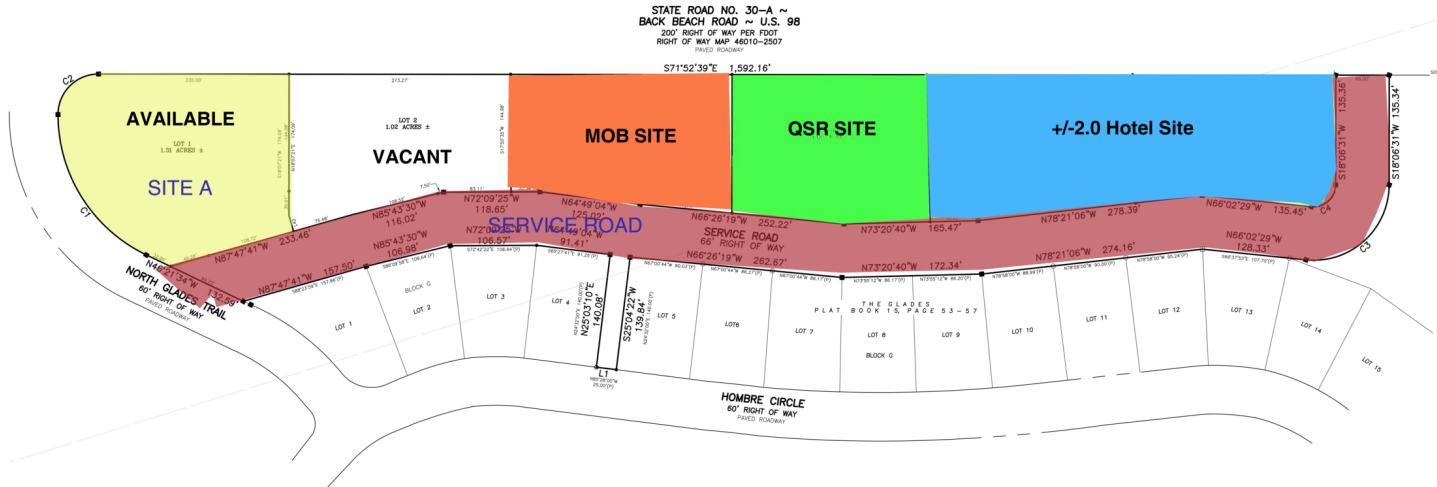
HOMBRE COMMERCIAL EAST SUBDIVISION

A SUBDIVISION OF A PORTION OF SECTION 25 AND SECTION 36, TOWNSHIP 3 SOUTH, RANGE 16 WEST,
CITY OF PANAMA CITY BEACH, BAY COUNTY, FLORIDA
AUGUST 2020

SHEET 3 OF 3 SHEET
PREPARED BY
SOUTHEASTERN SURVEYING & MAPPING CORPORATION
SURVEYING • LAND PLANNING • GIS • UTILITIES
CERTIFICATE OF AUTHORIZATION NUMBER LE2108
130 US HIGHWAY 90, CHIPLEY, FLORIDA 32428
PHONE (850) 638-0790 FAX (850) 638-8069
AUGUST 2020



PRELIMINARY



- ABBREVIATIONS:**
SSMC = SOUTHEASTERN SURVEYING & MAPPING CORPORATION
- SYMBOLS:**
 ■ = FOUND 4" x 4" CONCRETE MONUMENT 7719"
 ■ = FOUND 4" x 4" CONCRETE MONUMENT (LEGIBLE)
 ■ = FOUND 4" x 4" CONCRETE MONUMENT 3990 LB 0340"
 ■ = FOUND 4" x 4" CONCRETE MONUMENT 3990 LB 4440"
 ○ = FOUND NAIL & DISK
 ○ = FOUND 1" IRON ROD & CAP (NO IDENTIFICATION)
 ○ = FOUND 5/8" IRON ROD & CAP 1B 6411"
 ○ = FOUND 5/8" IRON ROD & CAP (NO IDENTIFICATION)
 ○ = FOUND 5/8" IRON ROD & CAP 1B 6020"
 ○ = FOUND 1/2" IRON ROD & CAP (LEGIBLE)
 ○ = FOUND 1/2" IRON ROD & CAP T099 0340"
 ○ = FOUND 1/2" IRON ROD & CAP 1B 4604"
- LEGEND AND ABBREVIATIONS:**
 ■ = FOUND 4"x4" CONCRETE MONUMENT "SSMC PPM LE2108" UNLESS OTHERWISE NOTED
 ○ = FOUND 5/8" IRON ROD "SSMC LE2108" UNLESS OTHERWISE NOTED
 ■ = SET NAIL & DISK "PCP SSMC LE2108"
 ■ = PLAT BOOK
 P.C. = POINT OF CURVATURE
 P.T. = POINT OF TANGENCY
 (M) = FIELD MEASURED DIMENSION
 (D) = DEED DIMENSION
 (C) = CALCULATED DIMENSION
 (P) = PLAT DIMENSION

LINE #	BEARING	LENGTH
L1	N65°00'15"W	24.72'

CURVE #	RADIUS	DELTA	LENGTH	CHORD BEARING	CHORD DISTANCE
C1	191.93'	64°31'15"	215.73'	N14°08'30"W	204.51'
C2	50.02'	90°01'26"	78.60'	N63°06'55"E	70.76'
C3	93.00'	95°51'00"	155.58'	S66°02'01"W	138.06'
C4	27.00'	95°51'00"	45.17'	S66°02'01"W	40.08'

NOT VALID WITHOUT RAISED SEAL AND SIGNATURE OF A FLORIDA LICENSED SURVEYOR AND MAPPER
SEE SHEET 1 FOR HOTEL LEGEND AND DESCRIPTION NOT VALID WITHOUT ALL SHEETS OF SET

 SOUTHEASTERN SURVEYING & MAPPING CORP.
 130 US HIGHWAY 90, CHIPLEY, FLORIDA 32428
 (850) 638-0790 FAX (850) 638-8069
 www.seasurveying.com

NO WARRANTY OR REPRESENTATION, EXPRESS OR IMPLIED, IS MADE AS TO THE ACCURACY OF THE INFORMATION CONTAINED HEREIN, AND THE SAME IS SUBMITTED SUBJECT TO ERRORS, OMISSIONS, CHANGE OF PRICE, RENTAL OR OTHER CONDITIONS, PRIOR SALE, LEASE OR FINANCING, OR WITHDRAWAL WITHOUT NOTICE, AND OF ANY SPECIAL LISTING CONDITIONS IMPOSED BY OUR PRINCIPALS NO WARRANTIES OR REPRESENTATIONS ARE MADE AS TO THE CONDITION OF THE PROPERTY OR ANY HAZARDS CONTAINED THEREIN ARE ANY TO BE IMPLIED.

17216 Panama City Beach Pkwy
Panama City Beach, FL 32413
850 249 2879 tel
talcorm.com



Home Depot Shopping Center

Publix Shopping Center



Sea Sound Apartments

10 X Living Apartments

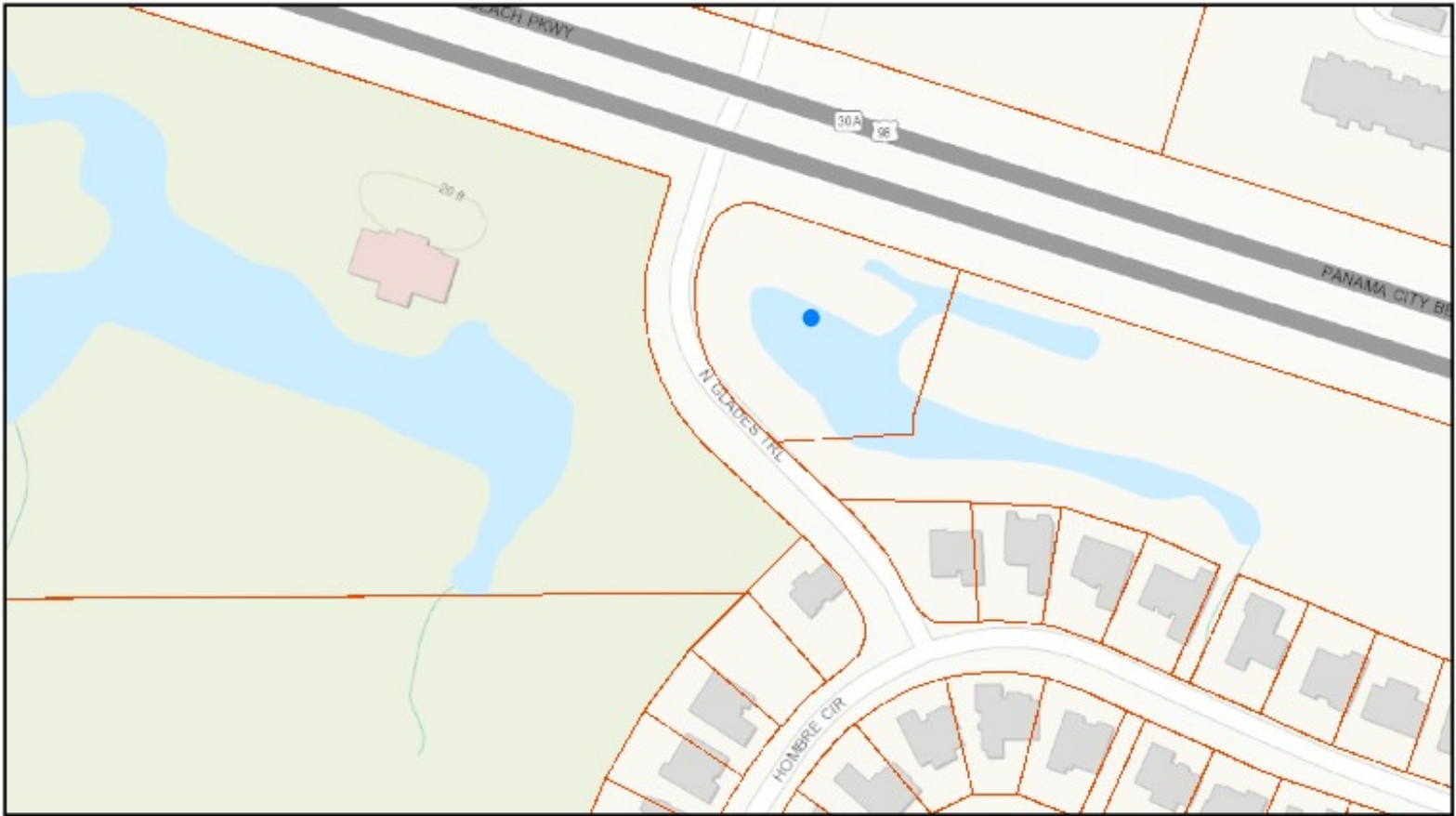


Property Site

Club at Panama City Beach

The Glades

The Glades



Web Map



pointLayer

- Override 1
- Parcels

