

RANCHO NIGUEL MEDICAL

25500 Rancho Niguel Road, Laguna Niguel CA



FOR LEASE

1,550 SF

MEDICAL OFFICE SUITE

CBRE

PROPERTY HIGHLIGHTS



\$3.25 NNN



Ample Free
Surface Parking



Exterior Building
Signage
Opportunities



Convenient Access
to 5 & 405 Freeways



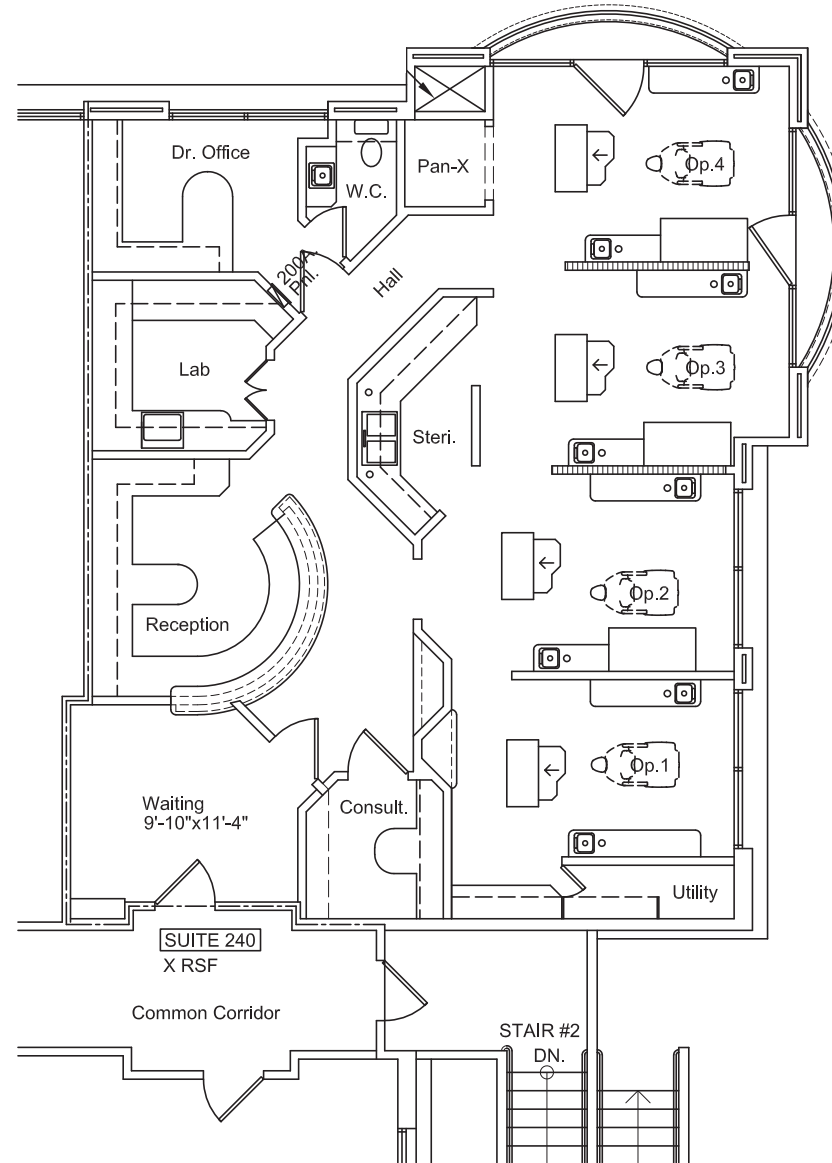
Less than
2 Miles from
Providence



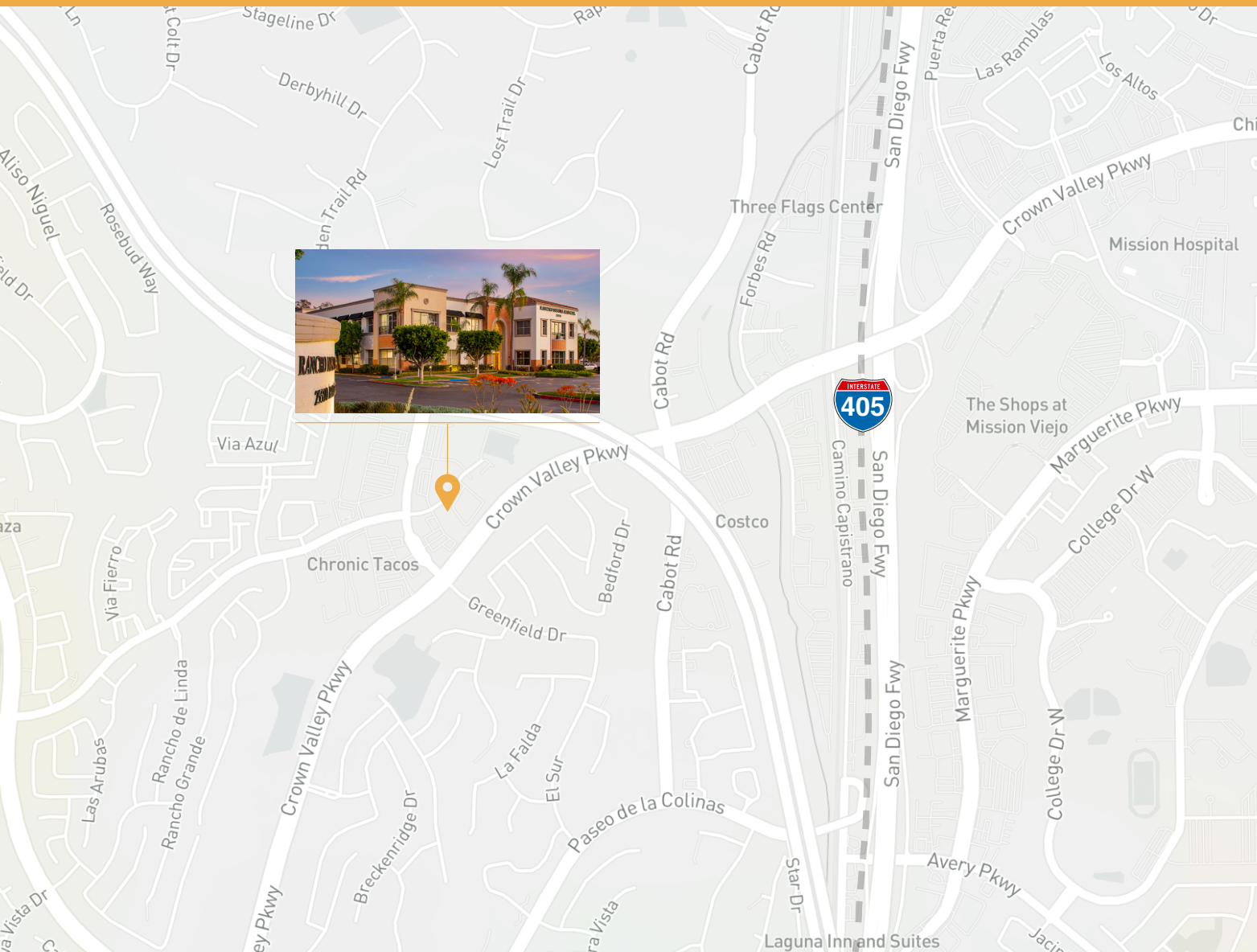
SUITE DESIGN

Suite 260 - 1,550 SF

2nd Generation Dental Suite, Efficient Layout Ideal for Dental and Orthodontics use, Waiting Room and Reception, 4 Operatories, Lab, Dr. Office, In-suite Restroom



NEARBY AMENITIES



- Starbucks
- Costco
- Target
- CVS
- In-N-Out Burger
- Thai Bite Thai Cuisine
- Chick-fil-A
- Panini Kabob Grill
- The Cheesecake Factory

FOR MORE INFORMATION, PLEASE CONTACT:



John Scruggs

First Vice President

Lic. 01796826

+1 949 842 5897

John.Scruggs@cbre.com

Daniel Nabavi

Senior Associate

Lic. 02069315

+1 949 225 7429

Daniel.Nabavi@cbre.com



© 2024 CBRE, Inc. All rights reserved. This information has been obtained from reliable sources but has not been verified for accuracy or completeness. CBRE, Inc. makes no guarantee, representation, or warranty and accepts no responsibility or liability for the accuracy, completeness, or reliability of the information contained herein. You should conduct a careful, independent investigation of the property and verify all information. Any reliance on this information is solely at your own risk. CBRE and the CBRE logo are service marks of CBRE, Inc. All other marks displayed on this document are the property of their respective owners, and the use of such marks does not imply any affiliation with or endorsement of CBRE. Photos herein are the property of their respective owners. Use of these images without the express written consent of the owner is prohibited.

