

FOR LEASE

DOWNTOWN LAWRENCEVILLE FIRST FLOOR OFFICE SPACE

113 S. Perry Street, Suite 100, Lawrenceville, GA 30046

Available Space: Suite 100 - 1,380 SF

**Lease Rate: \$2,725/mo
+\$200/mo utilities (estimated)**

PROPERTY OVERVIEW

The building is located in the heart of downtown Lawrenceville, which is the county seat for Gwinnett County – the second most populous county in the state of Georgia. The building has great accessibility and is proximate to the Gwinnett Justice & Administration Center and Lawrenceville City Hall.

- » Prime location between Dominick's Italian and Magazzino Delle Pizza in the heart of Downtown Lawrenceville
- » The available first floor office space is 1,380 square feet.
- » The office area includes a waiting area, break room/kitchenette, two offices, a large conference room, and a private restroom.
- » The building offers ample free parking and is within easy walking distance to all of downtown Lawrenceville's great retail and restaurants.



**OAKHURST
REALTY
PARTNERS**

**FOR MORE INFORMATION
PLEASE CONTACT:**

Fisher Paty
404-371-4100
fpaty@oakrep.com

FOR LEASE

DOWNTOWN LAWRENCEVILLE FIRST FLOOR OFFICE SPACE

113 S. Perry Street, Suite 100, Lawrenceville, GA 30046



FOR MORE INFORMATION : Fisher Paty | 404-371-4100 | fpaty@oakrep.com

Information contained herein has been obtained from sources deemed reliable but we cannot guarantee its accuracy. No liability is assumed for errors or omissions.

DOWNTOWN LAWRENCEVILLE FIRST FLOOR OFFICE SPACE

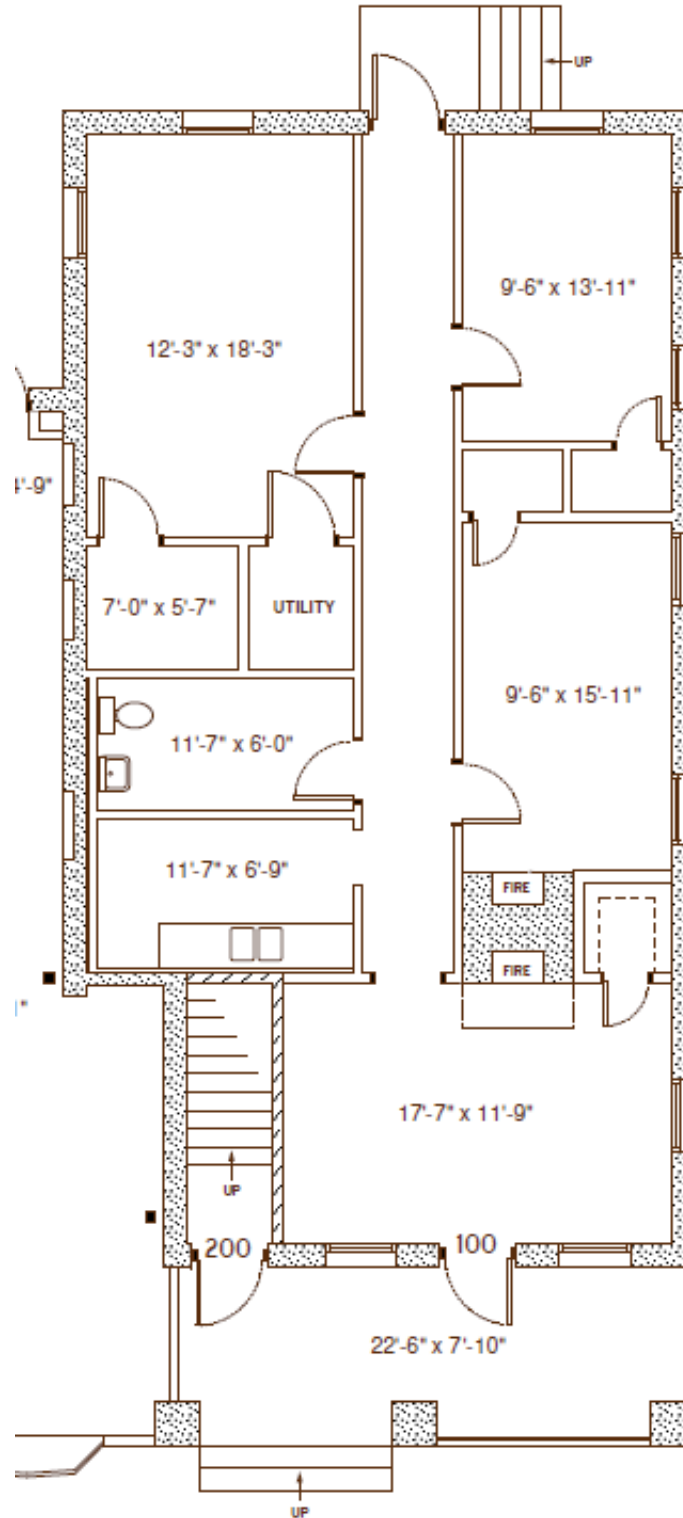
113 S. Perry Street, Suite 100, Lawrenceville, GA 30046



- | | | |
|---------------------|--------------------|---------------------------|
| 1. Foggy Bottom BBQ | 5. D'Floridian | 9. Beren's Frozen Custard |
| 2. Strange Taco | 6. McCray's Tavern | 10. Boulder Creek Coffee |
| 3. Dominick's | 7. Local Republic | 11. Aurora Theatre |
| 4. Alma Mexico | 8. Universal Joint | |

DOWNTOWN LAWRENCEVILLE FIRST FLOOR OFFICE SPACE

113 S. Perry Street, Suite 100, Lawrenceville, GA 30046



FOR MORE INFORMATION : Fisher Paty | 404-371-4100 | fpaty@oakrep.com

Information contained herein has been obtained from sources deemed reliable but we cannot guarantee its accuracy. No liability is assumed for errors or omissions.