

FOR SALE HISTORIC/MIXED USE PROPERTY

156 High Street • Portland, ME



HISTORIC CHURCH CAMPUS FOR SALE

- 31,632±SF on 0.455± acre lot
- Ideal for a variety of uses including residential conversion, event venue or offices
- Layout consists of sanctuary, chapel, offices and community rooms
- Can be sold with or without the sanctuary
- Prominent street frontage and highly visible location with traffic counts of 12,540± cars/day (MDOT 6/2025).



Mark Malone
O 207.773.6000
C 207.233.6000
mark@malonecb.com



Nick Malone
O 207.558.9466
C 207.632.6010
nick@malonecb.com

SALE PRICE: \$2,450,000



5 MOULTON STREET | PORTLAND, ME 04101 | 207.772.2422 | MALONECB.COM

PROPERTY SUMMARY

156 High Street • Portland, ME



Site Info

OWNER:	Williston-Immanuel United Church
DEED:	Book 29974, Page 339
ASSESSOR:	Map 46, Block D, Lot 17 & 19 (156 High St) Map 46, Block D, Lot 20 & 37 (8 Deering St)
LOT SIZE:	0.455± AC (156 High St) 0.077± AC (8 Deering St)
SIGNAGE:	On building, at Pylon
PARKING:	12 deeded parking spaces on site
ROAD FRONTAGE:	105' on High Street
TRAFFIC COUNT:	12,540± cars/day (MDOT 2025)
ZONING:	B3 - Downtown Business
PROPERTY TAXES:	Currently exempt



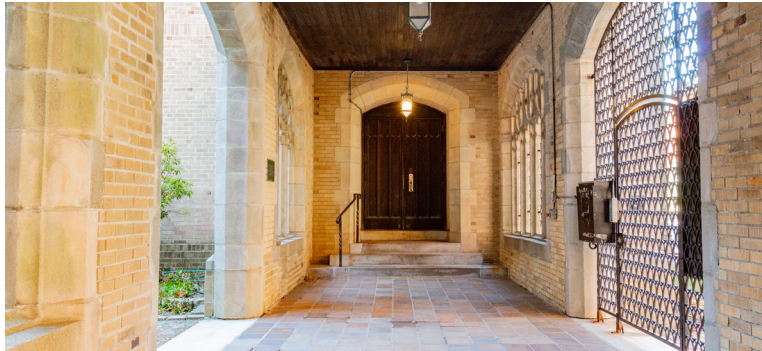
Building Info

BUILDING SIZE:	31,632± SF
YEAR BUILT:	1928
CONSTRUCTION:	Brick and stone
ROOF:	Shale shingles
SIDING:	Brick and stone
FOUNDATION:	Full
FLOORING:	Wood, carpet, concrete & vinyl
CEILING HEIGHT:	8'± to cathedral
ELECTRICITY:	See broker
HVAC:	Gas, oil & electric
UTILITIES:	Municipal water/sewer
KITCHEN:	Yes
RESTROOM:	Four (4)±
SPRINKLER:	Yes



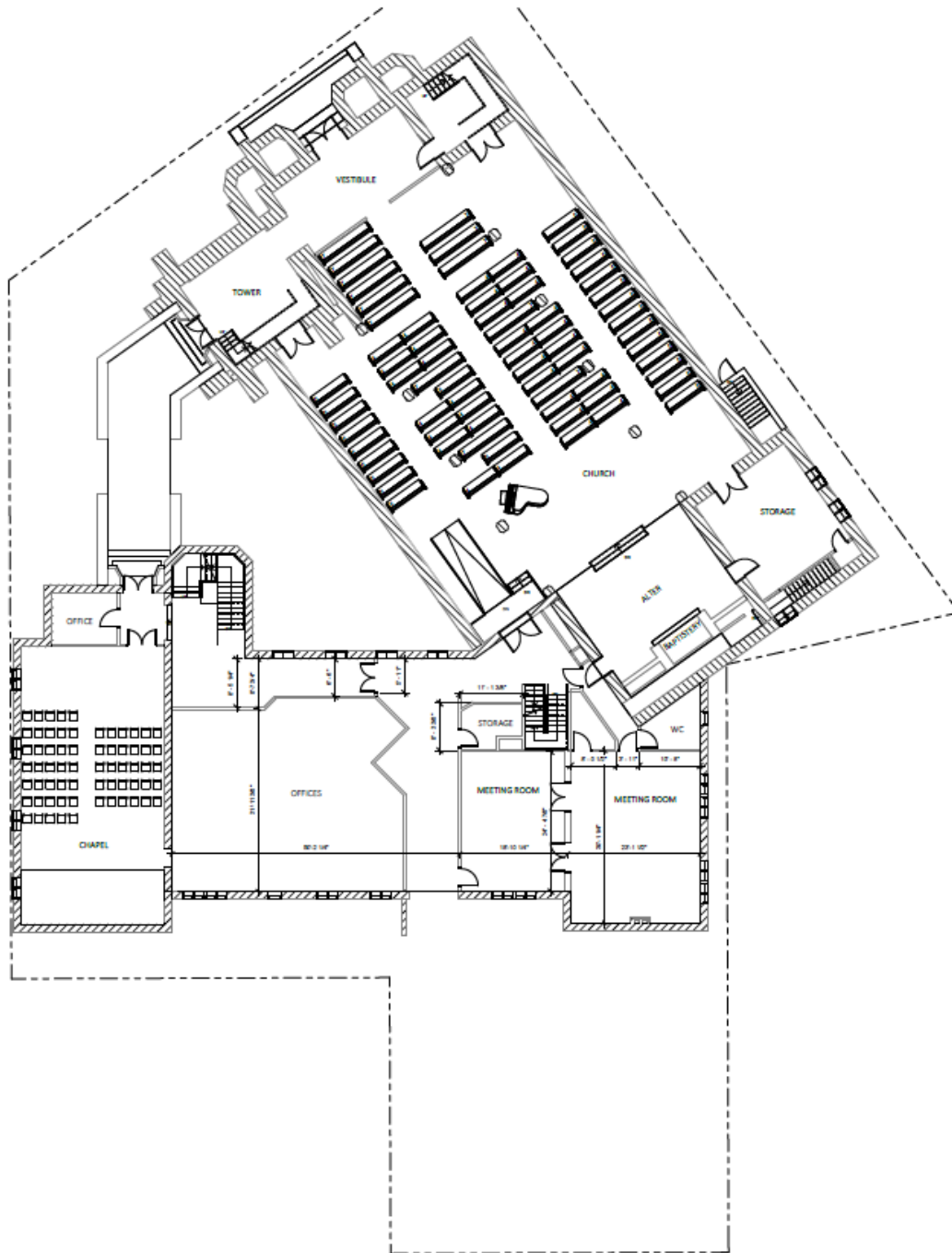
PHOTOS

156 High Street • Portland, ME



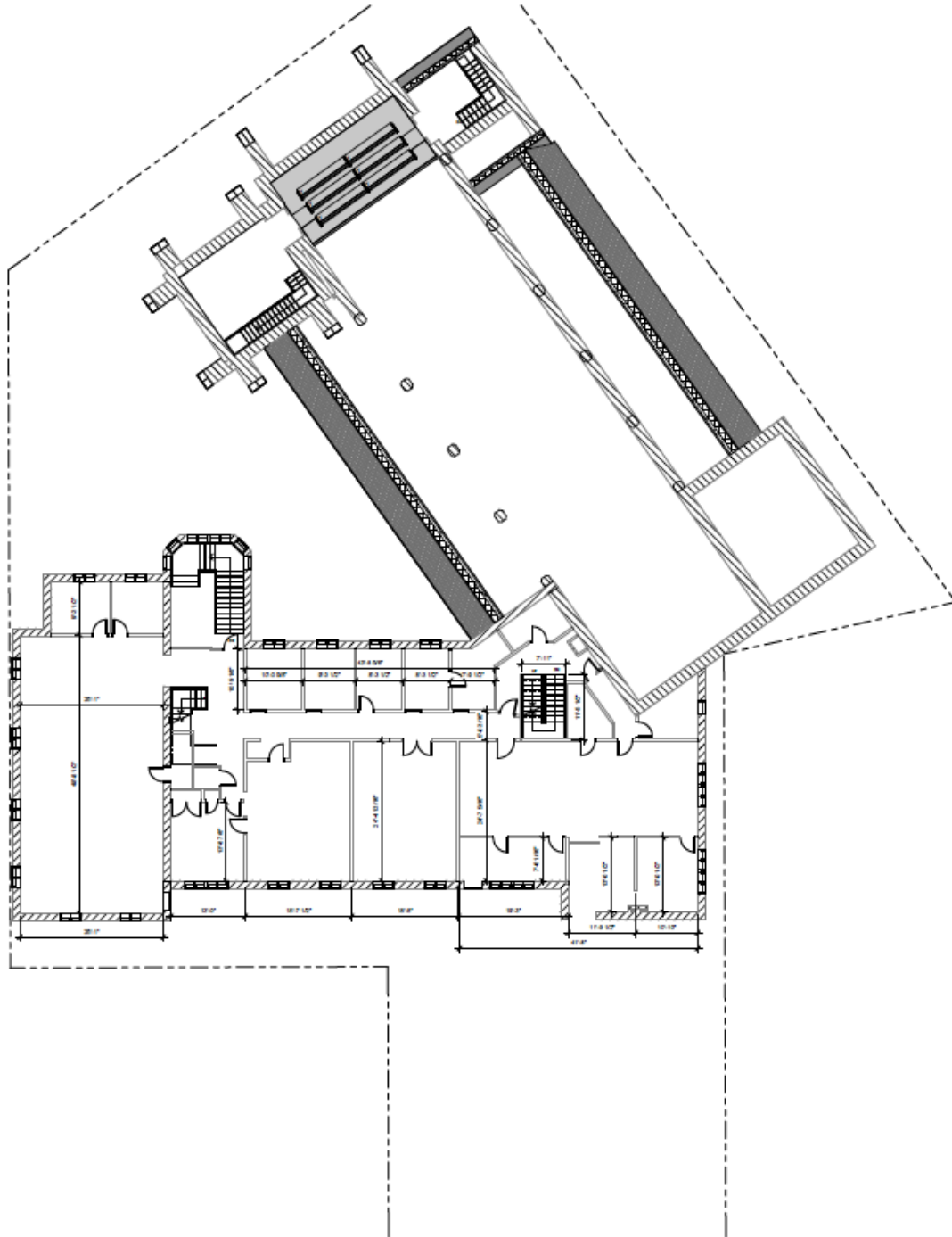
FLOOR PLAN • MAIN LEVEL

156 High Street • Portland, ME



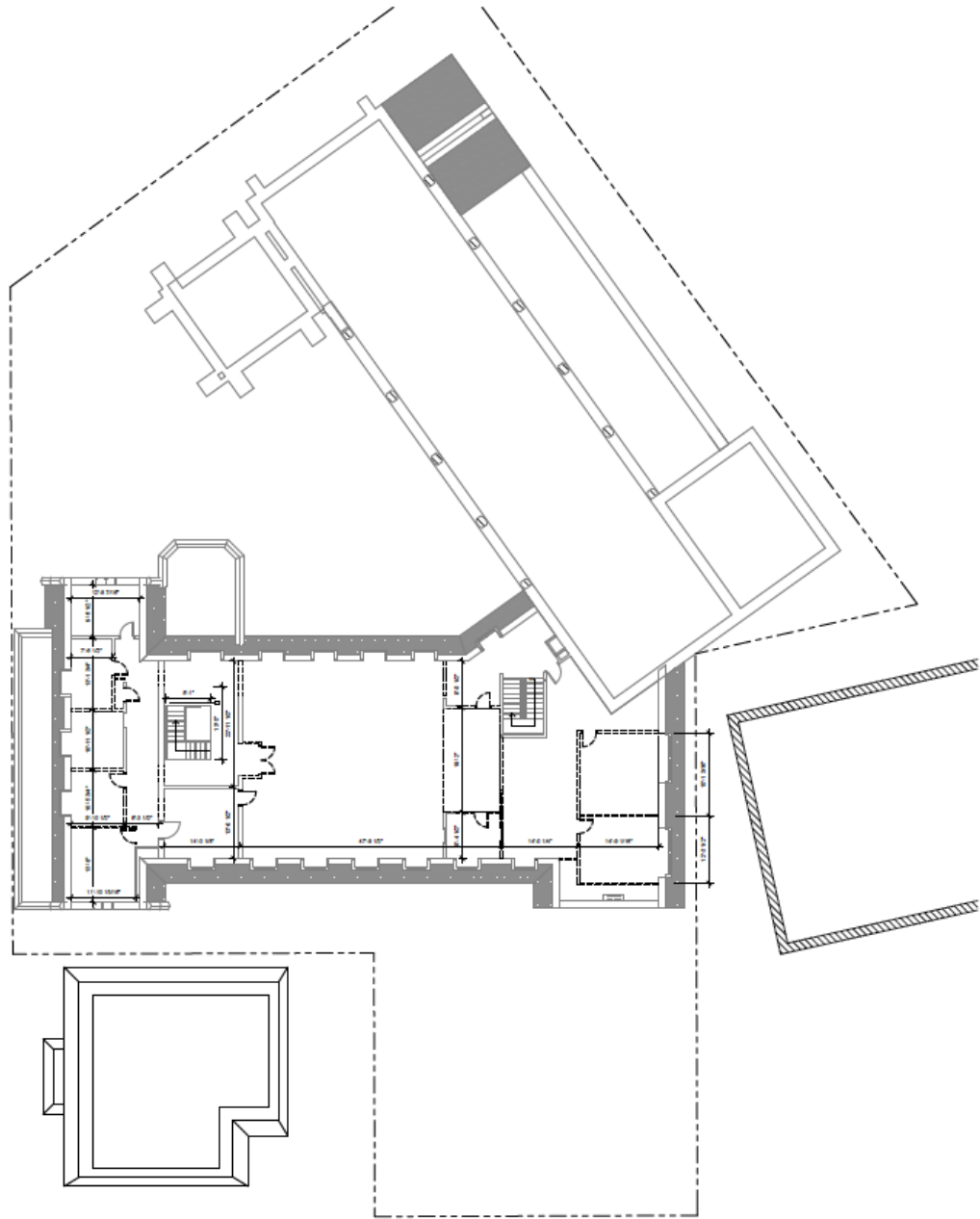
FLOOR PLAN • SECOND LEVEL

156 High Street • Portland, ME



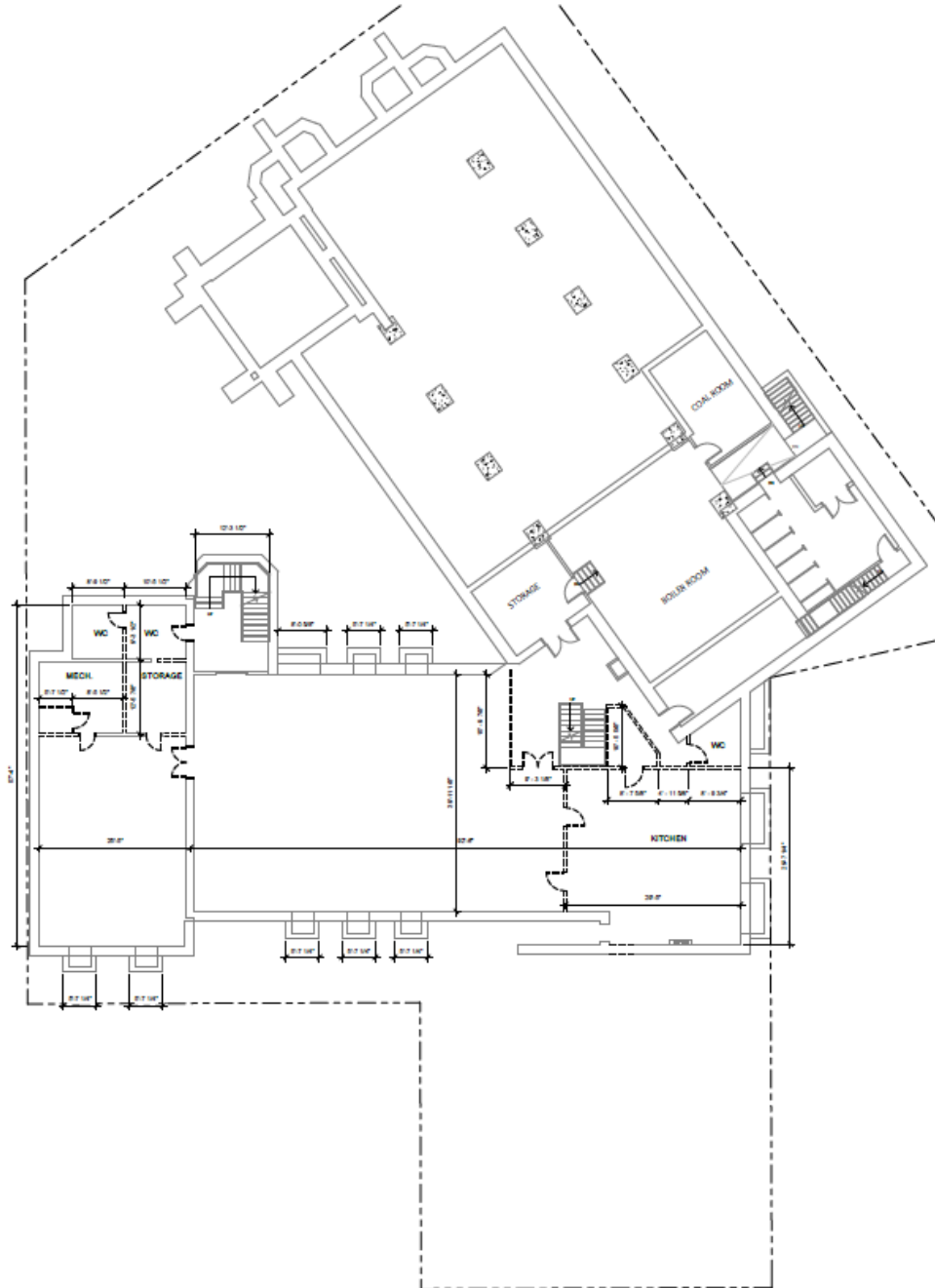
FLOOR PLAN • THIRD LEVEL

156 High Street • Portland, ME



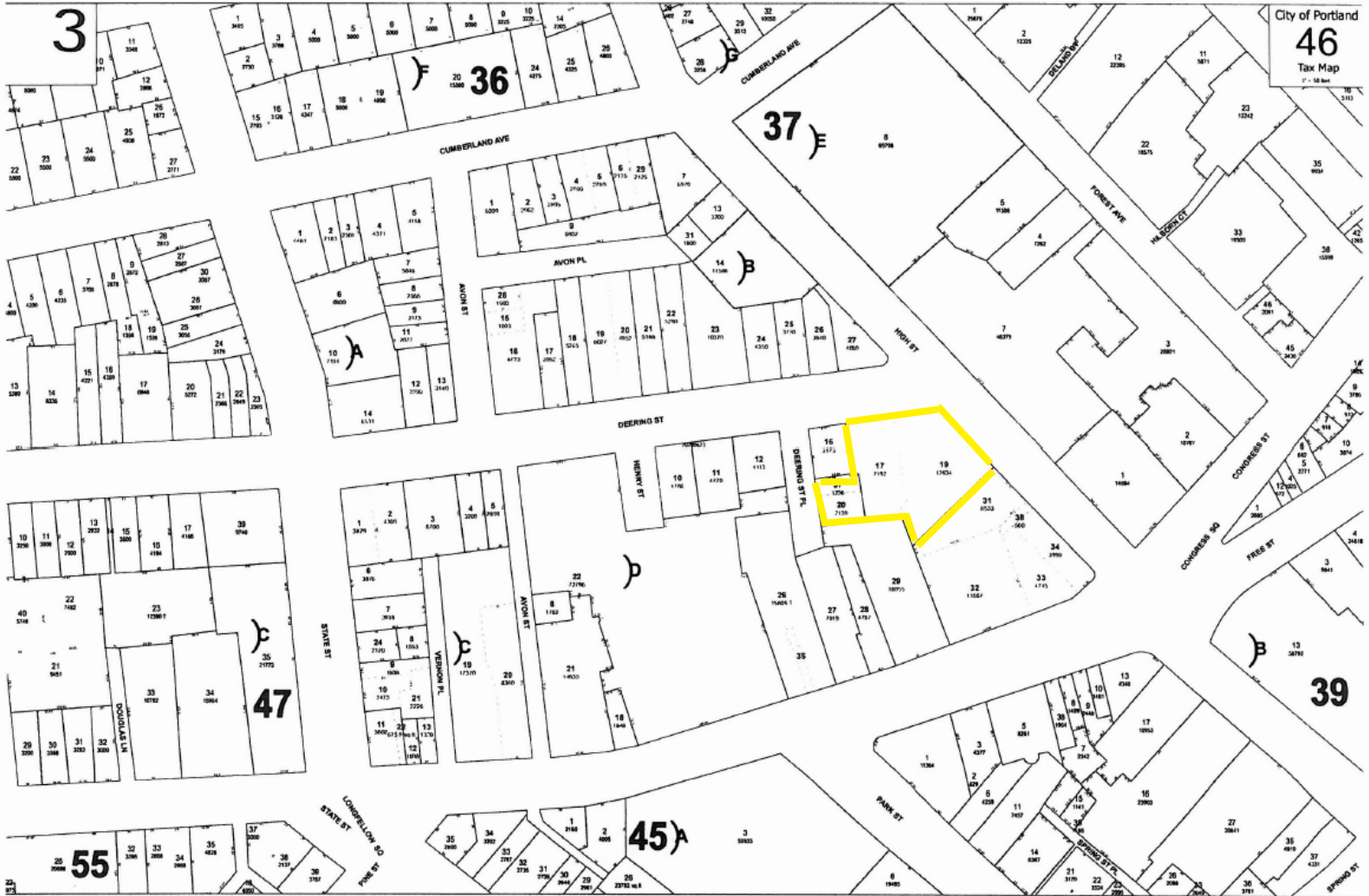
FLOOR PLAN • BASEMENT

156 High Street • Portland, ME



TAX MAP

156 High Street • Portland, ME



DEMOGRAPHICS

156 High Street • Portland, ME



118,405
Population

2.1
Average Household Size

40.9
Median Age



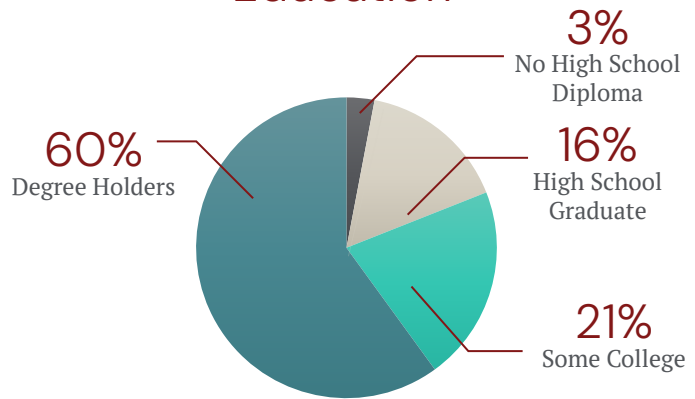
8,241
Total Businesses

119,846
Total Employees

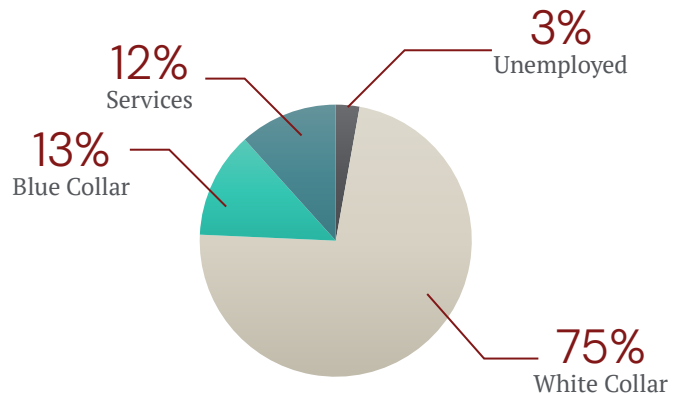


\$94,561
Median Household
Income

Education



Employment



LOCATION MAP

156 High Street • Portland, ME



NEARBY

STAY

WESTIN
HOTELS & RESORTS

Holiday Inn
By the Bay

DINE

EMPIRE
Chinese Kitchen

TWO FAT CATS
BAKERY

Y%F

LITTLE TAP
HOUSE

GILL'S
Neighborhood Bar

SHOP

WEEKEND VINTAGE

CVS
pharmacy

This document has been prepared by Malone Commercial Brokers for advertising and general information only. Malone Commercial Brokers makes no guarantees, representations or warranties of any kind, expressed or implied, regarding, but not limited to, warranties of content, accuracy, and reliability. Any interested party should undertake their own inquiries as to the accuracy of the information. Malone Commercial Brokers excludes unequivocally all informed or implied terms, conditions and warranties arising out of this document and excludes all liability for loss and damages there from. All data is subject to change of price, error, omissions, other conditions or withdrawal without notice. Malone Commercial Brokers is acting as the Seller's/Lessor's agent in the marketing of this property.

