

**GENERAL/ LAW/ MEDICAL  
OFFICE**

**COMPASS  
COMMERCIAL**



**ASKING PRICE**  
**\$2,100,000.00**

**FOR SALE**  
**±2,199 SF**

**OFFERING MEMORANDUM**

**841-843** **Malone Rd**  
**SAN JOSE, CA 95125**

**JALILI**  
COMMERCIAL GROUP





## CONFIDENTIALITY & DISCLAIMER

All materials and information received or derived from Compass Commercial - San Francisco & Los Angeles its directors, officers, agents, advisors, affiliates and/or any third party sources are provided without representation or warranty as to completeness, veracity, or accuracy, condition of the property, compliance or lack of compliance with applicable governmental requirements, developability or suitability, financial performance of the property, projected financial performance of the property for any party's intended use or any and all other matters.

Neither Compass Commercial - San Francisco & Los Angeles its directors, officers, agents, advisors, or affiliates makes any representation or warranty, express or implied, as to accuracy or completeness of the any materials or information provided, derived, or received. Materials and information from any source, whether written or verbal, that may be furnished for review are not a substitute for a party's active conduct of its own due diligence to determine these and other matters of significance to such party. Compass Commercial - San Francisco & Los Angeles will not investigate or verify any such matters or conduct due diligence for a party unless otherwise agreed in writing.

EACH PARTY SHALL CONDUCT ITS OWN INDEPENDENT INVESTIGATION AND DUE DILIGENCE.

Any party contemplating or under contract or in escrow for a transaction is urged to verify all information and to conduct their own inspections and investigations including through appropriate third party independent professionals selected by such party. All financial data should be verified by the party including by obtaining and reading applicable documents and reports and consulting appropriate independent professionals. Compass Commercial - San Francisco & Los Angeles makes no warranties and/or representations regarding the veracity, completeness, or relevance of any financial data or assumptions. Compass Commercial - San Francisco & Los Angeles does not serve as a financial advisor to any party regarding any proposed transaction. All data and assumptions regarding financial performance, including that used for financial modeling purposes, may differ from actual data or performance. Any estimates of market rents and/or projected rents that may be provided to a party do not necessarily mean that rents can be established at or increased to that level. Parties must evaluate any applicable contractual and governmental limitations as well as market conditions, vacancy factors and other issues in order to determine rents from or for the property.

Legal questions should be discussed by the party with an attorney. Tax questions should be discussed by the party with a certified public accountant or tax attorney. Title questions should be discussed by the party with a title officer or attorney. Questions regarding the condition of the property and whether the property complies with applicable governmental requirements should be discussed by the party with appropriate engineers, architects, contractors, other consultants and governmental agencies. All properties and services are marketed by Compass Commercial - San Francisco & Los Angeles in compliance with all applicable fair housing and equal opportunity laws.



# TABLE OF CONTENTS

- 4 The Team
- 5 Property Information
- 6 Property Photos
- 12 Floor Plan
- 13 Market Overview
- 14 Retailer Map
- 17 Sales Comps



Sam Jalil  
Executive Vice President  
CA Lic: 02053100  
408.316.2157  
[sam.jalil@compass.com](mailto:sam.jalil@compass.com)

COMPASS  
COMMERCIAL

---

# 841- 843

## Malone Rd SAN JOSE, CA 95125

---



### Building

Situated at **841 Malone Rd, San Jose, CA**, this commercial office space offers **2,199 square feet** of functional workspace on a **0.16-acre** lot. **Built in 1958**, the property features a mid-century design with a versatile layout suitable for various professional uses. The compact lot provides efficient space for parking or outdoor amenities, ideal for businesses seeking a low-maintenance property. Located in a well-established San Jose neighborhood, the property benefits from excellent access to local businesses, amenities, and major transportation routes, making it an attractive option for office tenants.







# PROPERTY INFORMATION



**841- 843 Malone Rd. San Jose, CA 95125**

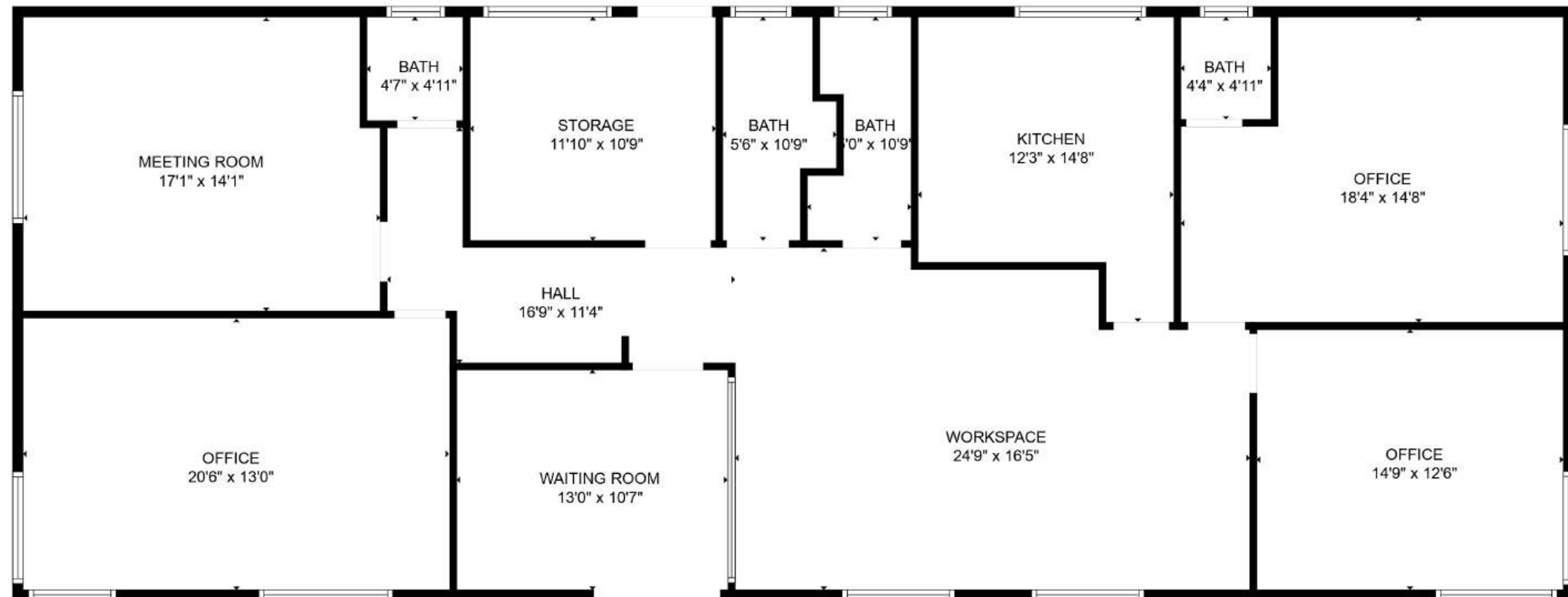
## **Highlights:**

- Plentiful Onsite parking
- Desirable Location/ High Traffic area
- Professional Office Buildout
- Well Maintained Exterior
- Zoning and building type

<b>Property Type</b>	Office
<b>Zoning</b>	C1
<b>Building Size</b>	2,199 SF
<b>Lot Size</b>	0.16 Acres
<b>Year Built</b>	1958
<b>Parking Spaces</b>	10



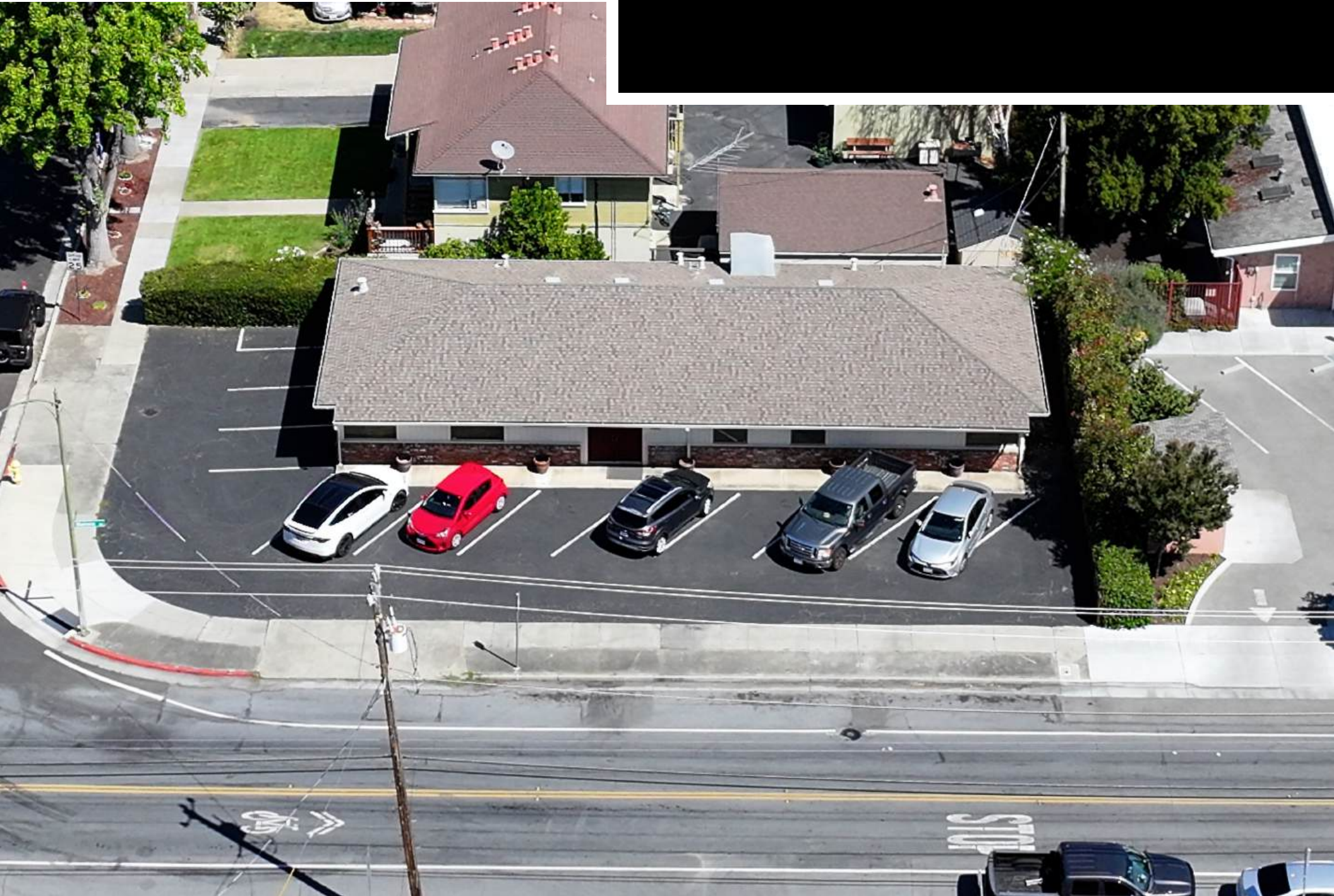
# Floorplan



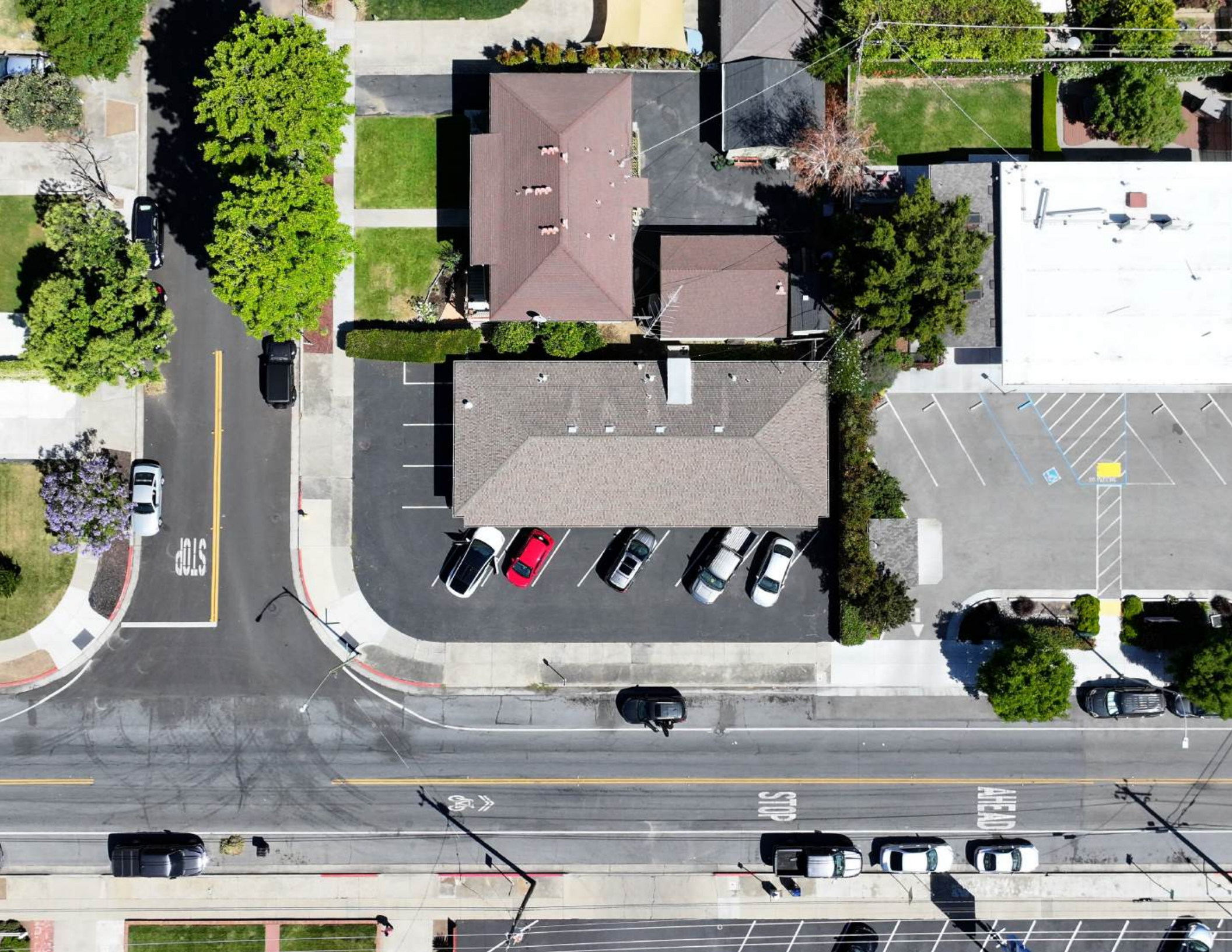




# PROPERTY PHOTOS













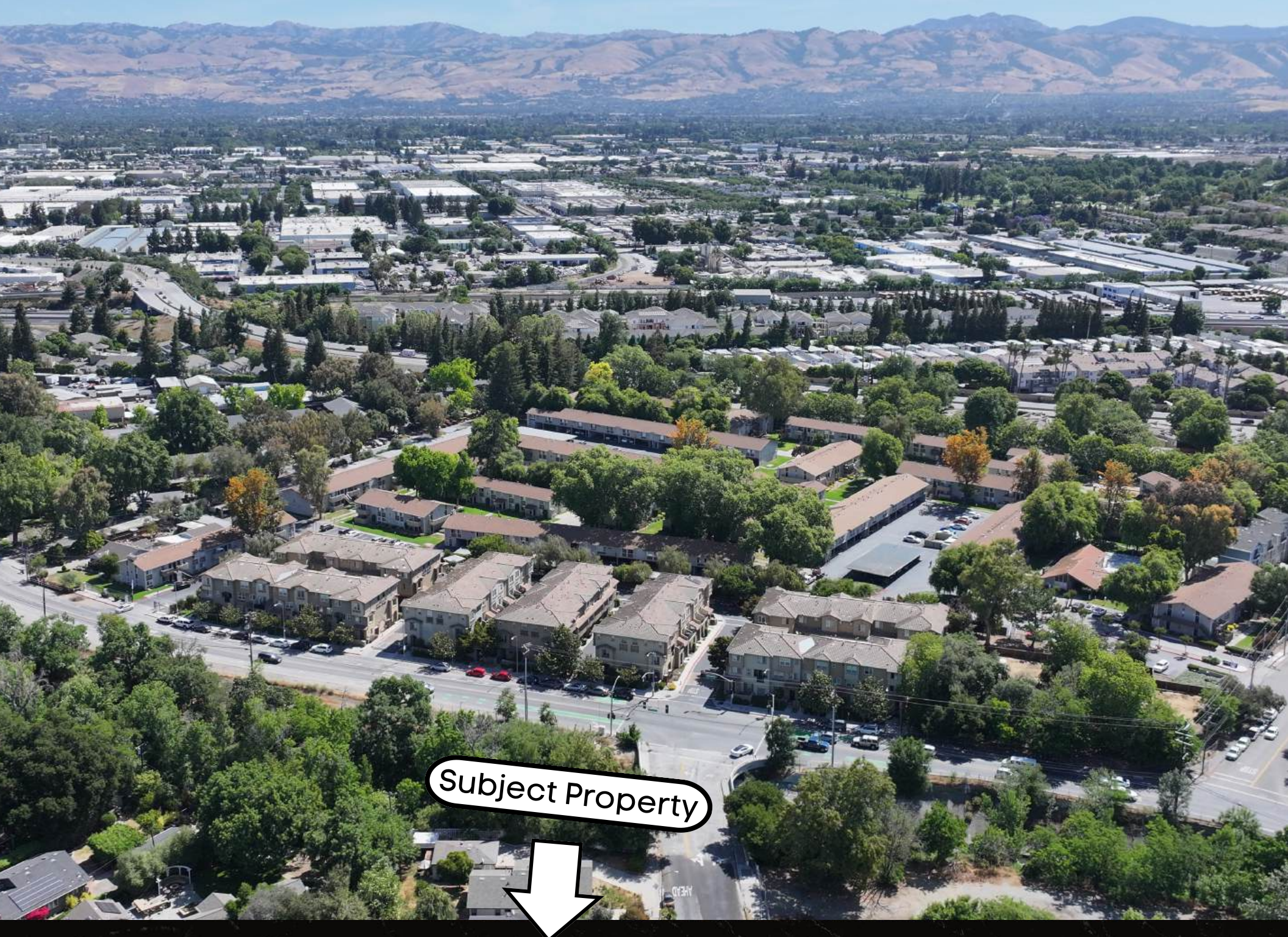






Subject Property





Subject Property





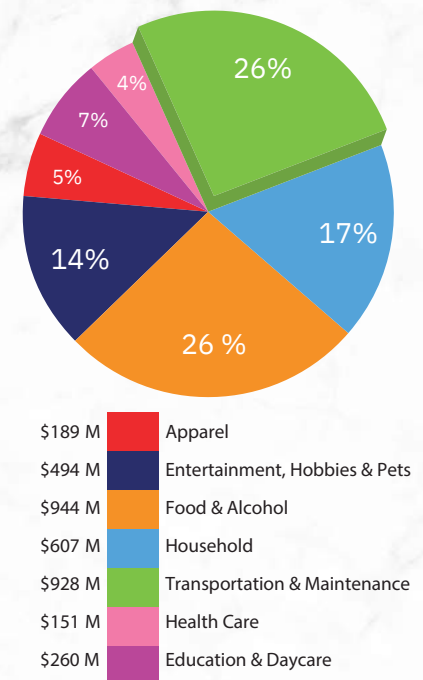
## San Jose

Located in the heart of Silicon Valley, San Jose blends suburban comfort with urban energy. Known for its cultural diversity, booming tech industry, and inclusive atmosphere, the city offers an outstanding quality of life. With scenic parks, top-rated schools, and convenient access to major Bay Area destinations, San Jose is a great choice for families and professionals. Residents enjoy a dynamic arts and entertainment scene, diverse culinary offerings, and a strong community spirit.

### DEMOGRAPHICS

Population	2 Mile	5 Miles	10 Miles
2024 Population	88,193	653,965	1,427,849
2029 Population	84,837	628,881	1,373,581
Average Household Income	\$154,877	\$147,239	\$168,053
Bachelor's Degree or Higher	45%	26%	25%

### CONSUMER SPENDING



\*Demographics and consumer spending data derived from CoStar



RETAILER MAP







SAN JOSE, CA

## METRO OVERVIEW

- San Jose is a global innovation center in Silicon Valley, home to major tech companies like Adobe, Cisco, and PayPal, along with a vibrant startup ecosystem.
- Downtown San Jose offers a lively mix of restaurants, cafes, local shops, and cultural venues, with strong support from the San Jose Downtown Association.
- The city is well-connected through I-280, I-880, US-101, VTA light rail, Caltrain, and the Mineta San Jose International Airport, enabling easy commutes and travel.
- Popular attractions include the Tech Interactive, SAP Center, Winchester Mystery House, and the San Jose Museum of Art. Parks such as Alum Rock Park, Guadalupe River Park, and Kelley Park provide space for hiking, biking, and family-friendly activities.
- San Jose's cultural diversity is reflected in its festivals, community events, and wide range of international cuisine.





# 841- 843

Malone Rd  
SAN JOSE, CA 95125

## Demographics

Population	2 Mile	5 Miles	10 Miles
2000	75,621	634,668	1,319,033
2010	92,685	688,153	1,499,979
2024	88,193	653,965	1,427,849

Consumer Spending	5 Mile Households
Education & Daycare	\$719,573,888.00
Health Care	\$389,569,062.00
Transportation & Maintenance	\$2,254,563,684.00
Household	\$1,505,609,312.00
Food & Alcohol Entertainment,	\$2,368,147,245.00
Hobbies & Pets	\$1,228,160,384.00
Apparel	\$462,478,845.00

Household Income	5 mile 2024 households	5 mile 2029 households
< \$25K	23,558	23,872
\$25K- 50K	23,768	23,352
\$50K- 75K	25,987	24,633
\$75K- 100K	23,537	22,218
\$100K - 125K	19,381	18,355
\$125K - 150K	16,364	15,554
\$150K- 200K	26,202	24,155
\$200K+	58,228	56,290



**JALILI**  
COMMERCIAL GROUP



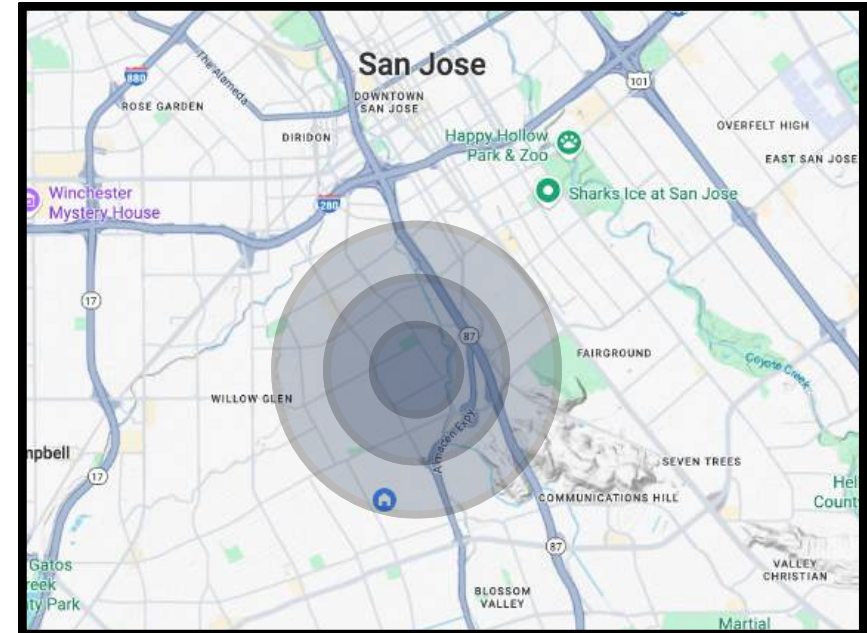
# 841- 843

Malone Rd  
SAN JOSE, CA 95125

## Demographics

Collection Street	Cross Street	VPD	Distance from Property
Coastland Ave	Malone Rd SE	1,530	0.08 mi
Coastland Ave	Malone Rd NW	861	0.08 mi
Coastland Ave	Ardis Dr SE	823	0.09 mi
Almaden Rd	Canoas Garden Ave S	16,862	0.15 mi
Johnston Ave	Byerley St NW	1,145	0.15 mi
Coastland Ave	Byerley St NW	1,348	0.17 mi
Lincoln Ct	Ardis Dr NE	1,497	0.18 mi

House Values	5 mile 2024 households	5 mile 2029 households
< \$100K	2,741	2,620
\$100K - 200K	1,939	1,856
\$200K - 300K	1,982	1,901
\$300K - 400K	1,652	1,587
\$400K - 500K	2,592	2,491
\$500K - 1M	33,718	32,216
\$1M+	60,832	58,245



**JALILI**  
COMMERCIAL GROUP



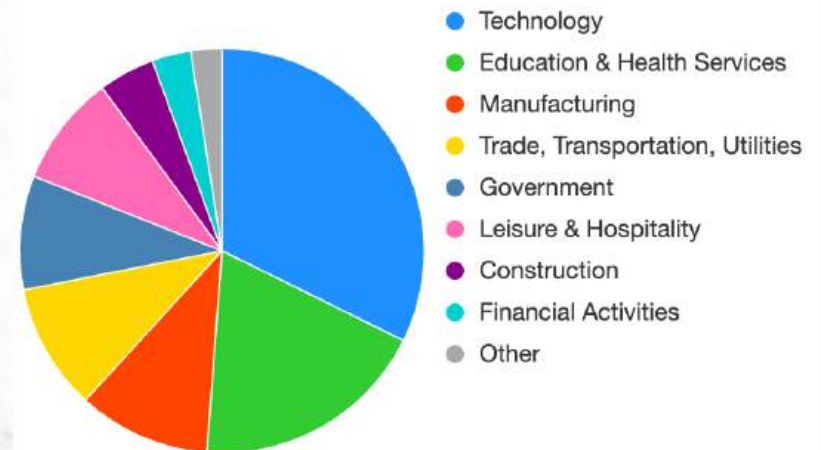


# MAJOR EMPLOYERS

San Jose, the hub of Silicon Valley, boasts major employers primarily in technology, including Cisco Systems, Adobe, PayPal, Western Digital, eBay, Zoom, and Nutanix, which collectively employ tens of thousands and drive innovation with significant market presence. Healthcare is represented by Kaiser Permanente, a key employer with local hospitals and clinics. Retail giants like Costco and Walmart, along with manufacturing firms like Sanmina and logistics operations supported by proximity to the Port of Oakland, further diversify the economy, providing substantial employment opportunities across sectors



**Employment Share by Industry in San Jose-Sunnyvale-Santa Clara, CA (May 2025)**





# Commercial Real Estate Investments

SETTING YOU UP FOR SUCCESS

COMPASS  
COMMERCIAL





## The Team



**Sam Jalili**  
Executive Vice President  
License: CA 02053100



**Theodore Wong**  
Vice President  
License: CA 02016737  
NV S.0196630



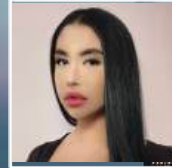
**Tom Gibbons**  
VP of Operations



**Madison Crimi-DeMichele**  
Senior Associate  
License: CA 02102723



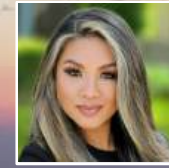
**Robert Sharrock**  
Senior Associate  
License: CA 01963433



**Sonia Walla**  
Associate  
License: CA 0226090



**Aparna Sayana**  
Senior Associate  
License: CA 01387613



**Kristina Castillo**  
Associate  
License: CA 02135168



**Rich De Villa**  
Associate  
License: CA 01332891



**Para Sobhani**  
Senior Associate  
License: CA 01358271



**Raf Lee**  
Associate  
License: CA 02118177



**Justin Hughes**  
Associate  
License: CA 02251554



**Suzanna Martinez**  
Associate  
License: CA 01979175



**Jacob Lantis**  
Apprentice

COMPASS  
COMMERCIAL



COMBINED  
**40+**  
YEARS OF  
REAL ESTATE  
EXPERIENCE

COMPASS  
COMMERCIAL



Sam Jalili  
Executive Vice President  
License: CA 02053100  
408.316.2157  
sam.jalili@compass.com

COMPASS  
COMMERCIAL

