

Available Medical Office Space for Lease

# San Gabriel Valley Medical Plaza

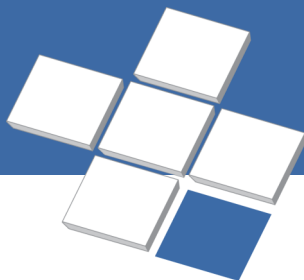
207 South Santa Anita Street, San Gabriel, CA 91776

For leasing information:

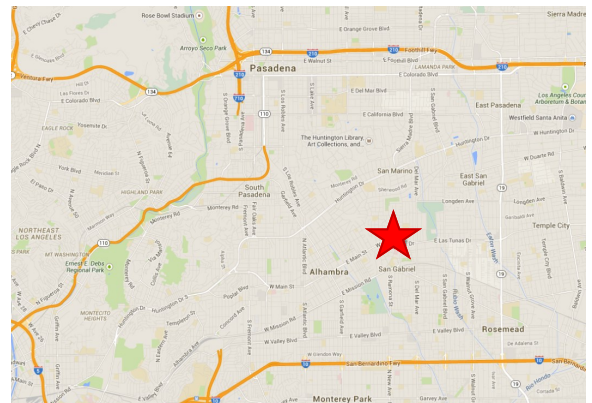
Leslie Price  
Director, Leasing  
Phone: 858-794-1900  
Lprice@pmbres.com  
www.pmbres.com  
CA Lic. 02131283



- **BUILD-TO-SUIT & MOVE-IN READY SPACE AVAILABLE**
- **PRIME GROUND FLOOR SPACE AVAILABLE**
- 58,000 Square Feet Four-Story Medical Office Building
- Located at the San Gabriel Medical Center Hospital
- Surface parking adjacent to building
- Local professional property management
- Convenient access to the 10 & 210 freeways
- Lab & Pharmacy located in building



**PMB**  
Real Estate Services  
Real Estate Management Solutions for Healthcare



# First Floor Availabilities



**Suite G14 / G16**

Approx. 6,600 RSF



**PMB Real Estate Services**  
*Real Estate Management Solutions for Healthcare*

San Gabriel Valley Medical Plaza

# Third Floor Availabilities

## Suite 335

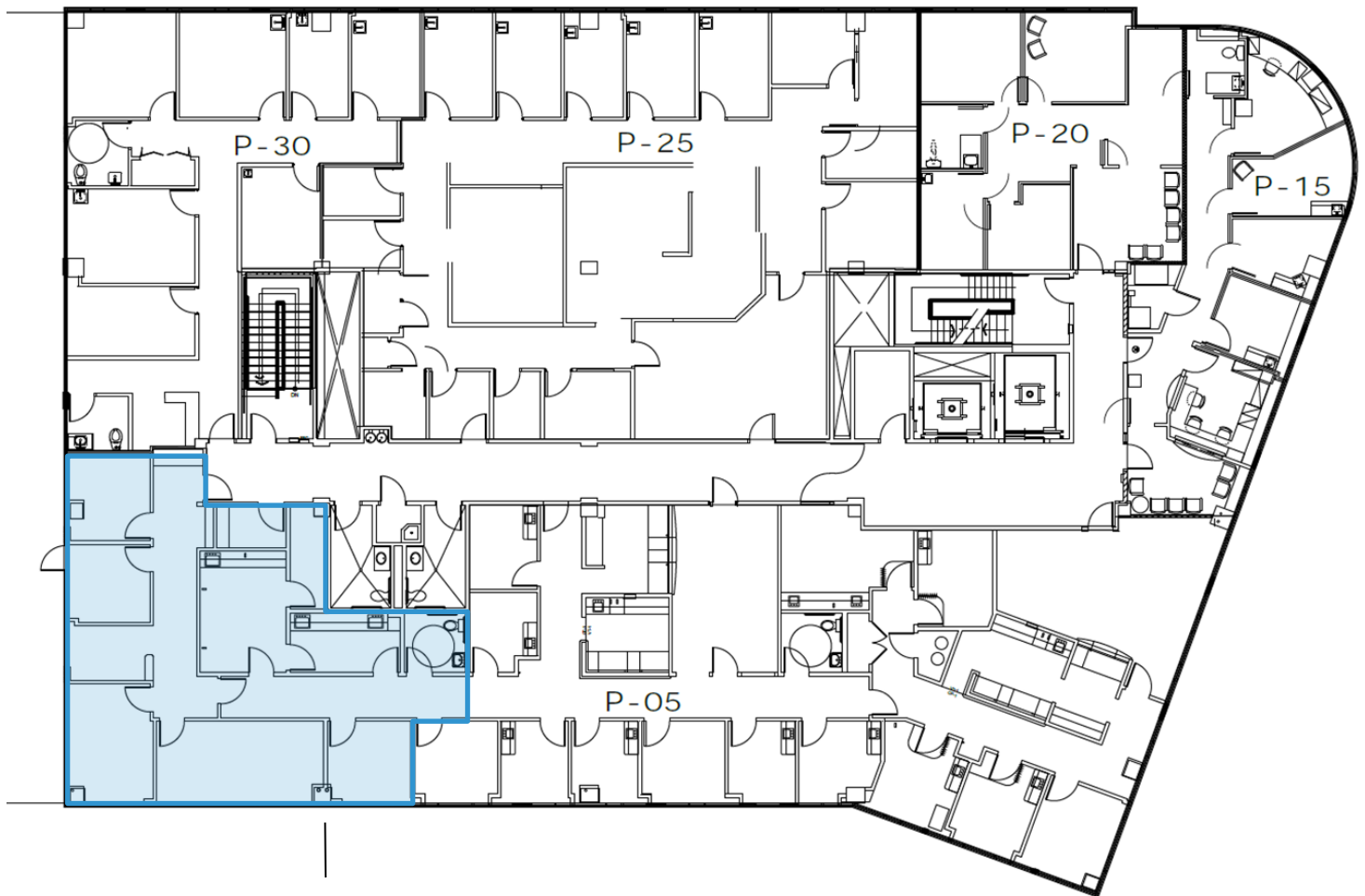
3,453 RSF



**PMB Real Estate Services**  
*Real Estate Management Solutions for Healthcare*

San Gabriel Valley Medical Plaza

# Fourth Floor Availabilities



**Suite P-35**  
1,740 RSF



**PMB Real Estate Services**  
*Real Estate Management Solutions for Healthcare*

San Gabriel Valley Medical Plaza