

REQCESM

18 E 23rd St

Retail Space for Lease | Flatiron

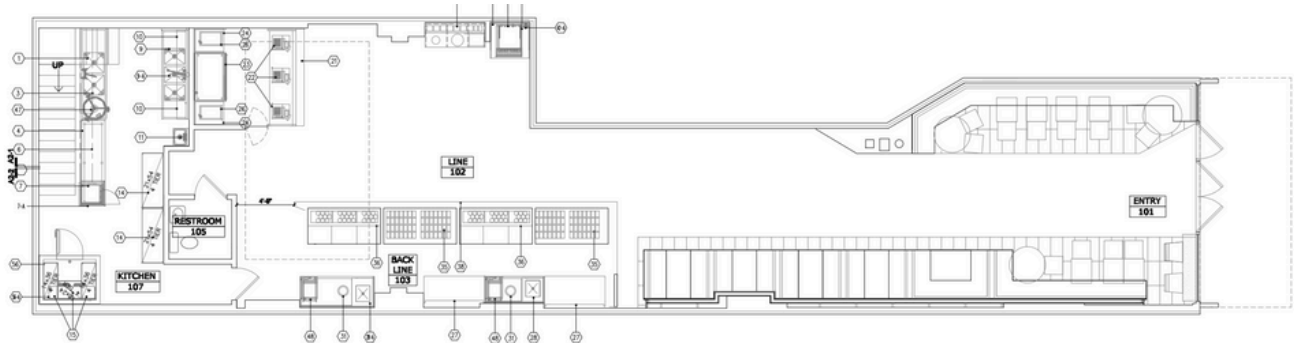
Elevate your brand with this fully built-out 2,000 SF restaurant space at 18 E 23rd St, plus an additional 2,000 SF lower level, in the heart of Flatiron. With 15' of prime frontage, soaring 10'-14' ceilings, and a turnkey kitchen featuring a walk-in fridge, freezer, and prep area, this former Chopt location is ready for its next concept. Positioned across from Madison Square Park in a high-foot-traffic corridor, you'll be surrounded by top food operators like DIG, Krispy Kreme, Zucker's Bagels, and McDonald's. This is a rare opportunity to plug into one of NYC's most dynamic dining destinations.



Ground Level | 2,000 SF



TERM	RENTAL RATE	SPACE USE	AVAILABILITY
5-10 Years	Upon Request	Retail	Now



Sam Hamway | ☎ (917) 270-5120 | ✉ sam.hamway@reqce.com
Benjamin Schanzer | ☎ (914) 364-3628 | ✉ benjamin.schanzer@reqce.com

