



COMMERCIAL  
ASSET GROUP

**Daniel Chiprut**  
CAG  
Co-Principal  
310.275.8222  
daniel@cagre.com  
Lic. 01808709

**Adam Funk**  
CAG  
Managing Director  
310.666.0124  
afunk@cagre.com  
Lic. 02129715

**Steven Salas**  
Newmark  
Senior Managing Director  
310.407.6569  
steven.salas@nmrk.com  
Lic. 01232955

בסייד



8712 **Wilshire Blvd**

Beverly Hills, CA 90211

**MEDICAL SPACE AVAILABLE IN BEVERLY HILLS**

# PROPERTY HIGHLIGHTS

## SPACE SIZES

**UNIT A: ±671 SF\***

**UNIT B: ±511 SF\***

**UNIT C: ±3,328 SF\***

**TOTAL SQUARE FOOTAGE:  
CONTIGUOUS FOR ±4,510 SF\***

## LEASE RATE

**NEGOTIABLE, MG**

## AVAILABLE

**IMMEDIATELY**

## TERM

**3 - 10 YEARS**

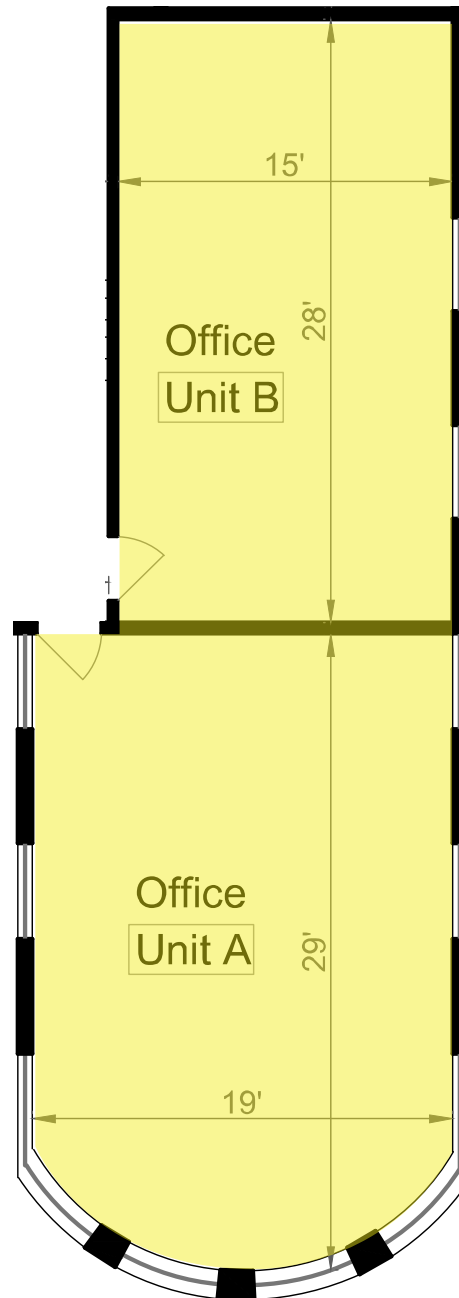
## PARKING

**1/1,000**

**WITH PARKING AVAILABLE NEARBY**

# UNIT A+B FLOOR PLAN

---

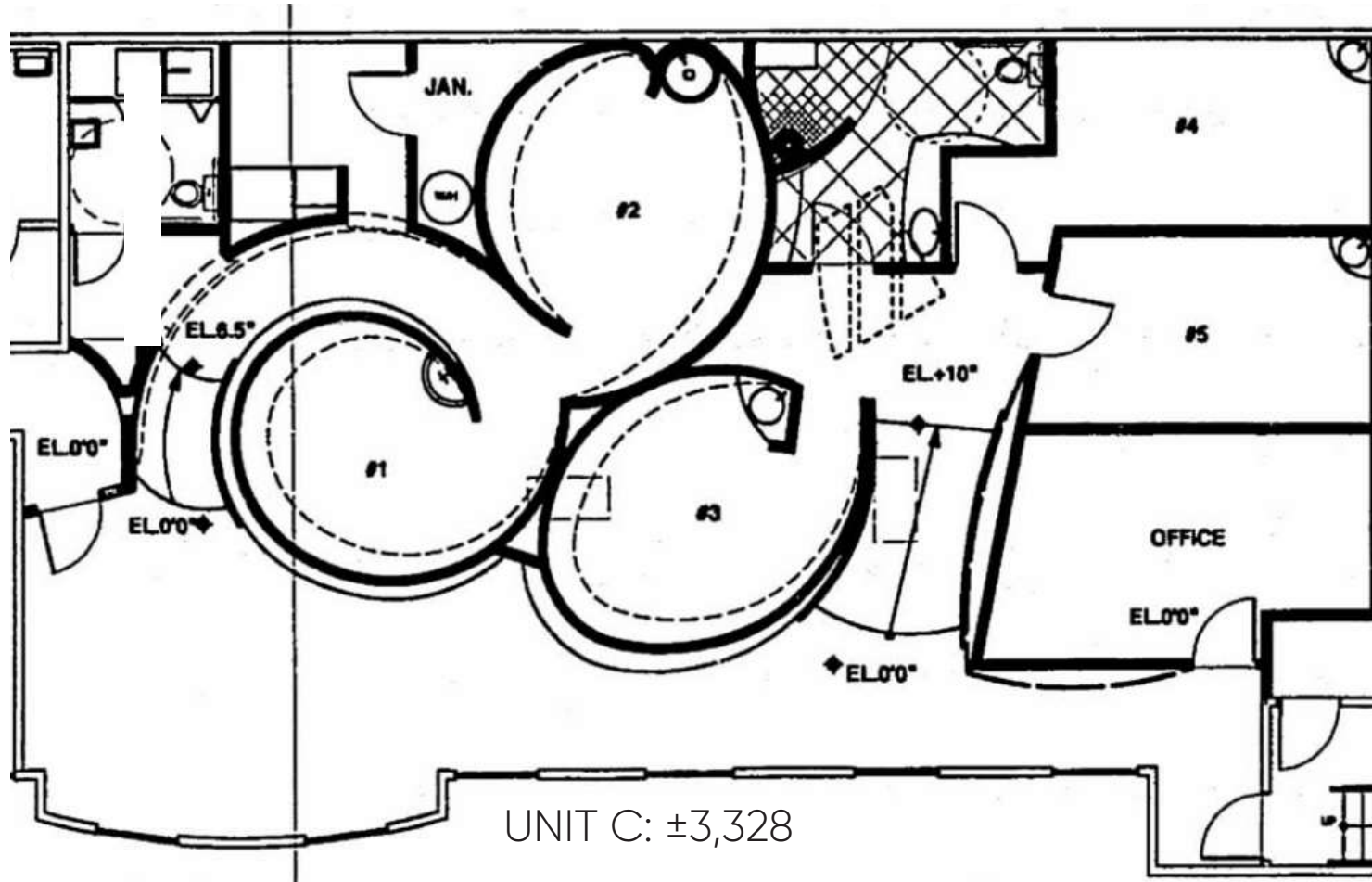


UNIT A: ±671 SF

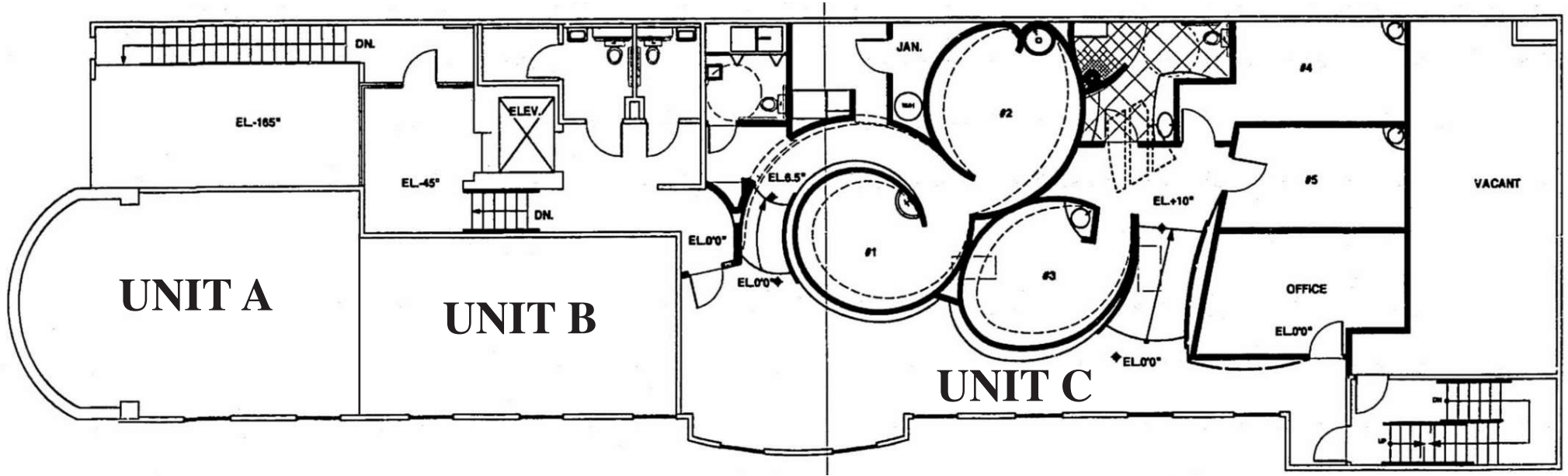
UNIT B: ±511 SF

**TOTAL: ±1,182 SF**

# UNIT C FLOOR PLAN



# UNIT A, B, + C FLOOR PLAN



UNIT A: ±671 SF  
UNIT B: ±511 SF  
UNIT C: ±3,328 SF  
**TOTAL: ±4,510 SF**

# PHOTOS

---



# PHOTOS

---



# AERIAL





**COMMERCIAL  
ASSET GROUP**

These materials are based on information and content provided by others, which we believe are accurate. No guarantee, warranty or representation is made by Commercial Asset Group, Inc. or its personnel. All interested parties must independently verify accuracy and completeness. As well, any projections, assumptions, opinion, or estimates are used for example only and do not represent the current or future performance of the identified property. Your tax, financial, legal and toxic substance advisors should conduct a careful investigation of the property and its suitability for your needs, including land use limitations. The property is subject to prior lease, sale, change in price, or withdrawal from the market without notice.



**Daniel Chiprut**  
CAG  
Co-Principal  
310.275.8222  
daniel@cagre.com  
Lic. 01808709

**Adam Funk**  
CAG  
Managing Director  
310.666.0124  
afunk@cagre.com  
Lic. 02129715

**Steven Salas**  
Newmark  
Senior Managing Director  
310.407.6569  
steven.salas@nmrk.com  
Lic. 01232955

**Commercial Asset Group**  
190 N. Canon Drive, STE 300  
Beverly Hills, CA 90210  
P: 310.275.8222 F: 310.275.8223  
www.cagre.com Lic. 01876070