

AGASSIZ SQUARE

1111, 1121, 1131 WESTRAC DRIVE, FARGO, ND


GOLDMARK™
COMMERCIAL REAL ESTATE INC

FOR LEASE



MULTI-TENANT OFFICE PARK

Space Available: 697 - 4,952 SF

Base Rent: \$13.00 PSF

Tenant Expenses: Heat/Electricity, Janitorial, Phone/Internet

Paul Campbell | 701.893.2826

paul.campbell@goldmark.com

Goldmark Commercial Real Estate

www.goldmarkcommercial.com

AGASSIZ SQUARE

1111, 1121, 1131 WESTRAC DRIVE, FARGO, ND

GOLDMARK[™]
COMMERCIAL REAL ESTATE INC

SPACE AVAILABLE

697 - 4,952 SF

BASE RENT

\$13.00 PSF

TENANT EXPENSES

Heat/Electricity
Phone/Internet
Janitorial

LANDLORD EXPENSES

Taxes/Insurance
Snow/Lawn
Water/Sewer/Garbage

NEIGHBORING BUSINESSES

Bell Bank
Scheels Home & Hardware
Dairy Queen
Wendy's
Ramada
Country Inn & Suites

PROPERTY DESCRIPTION:

This centrally-located professional office park has abundant parking and easy access to I-29, I-94 & 13th Avenue.

BUILDING 1111

Suite 202 - 697 SF
Suite 204 - 1,883 SF
Suite 205 - 1,489 SF
Suite 206 - 1,213 SF
Suite 208 - 1,887 SF

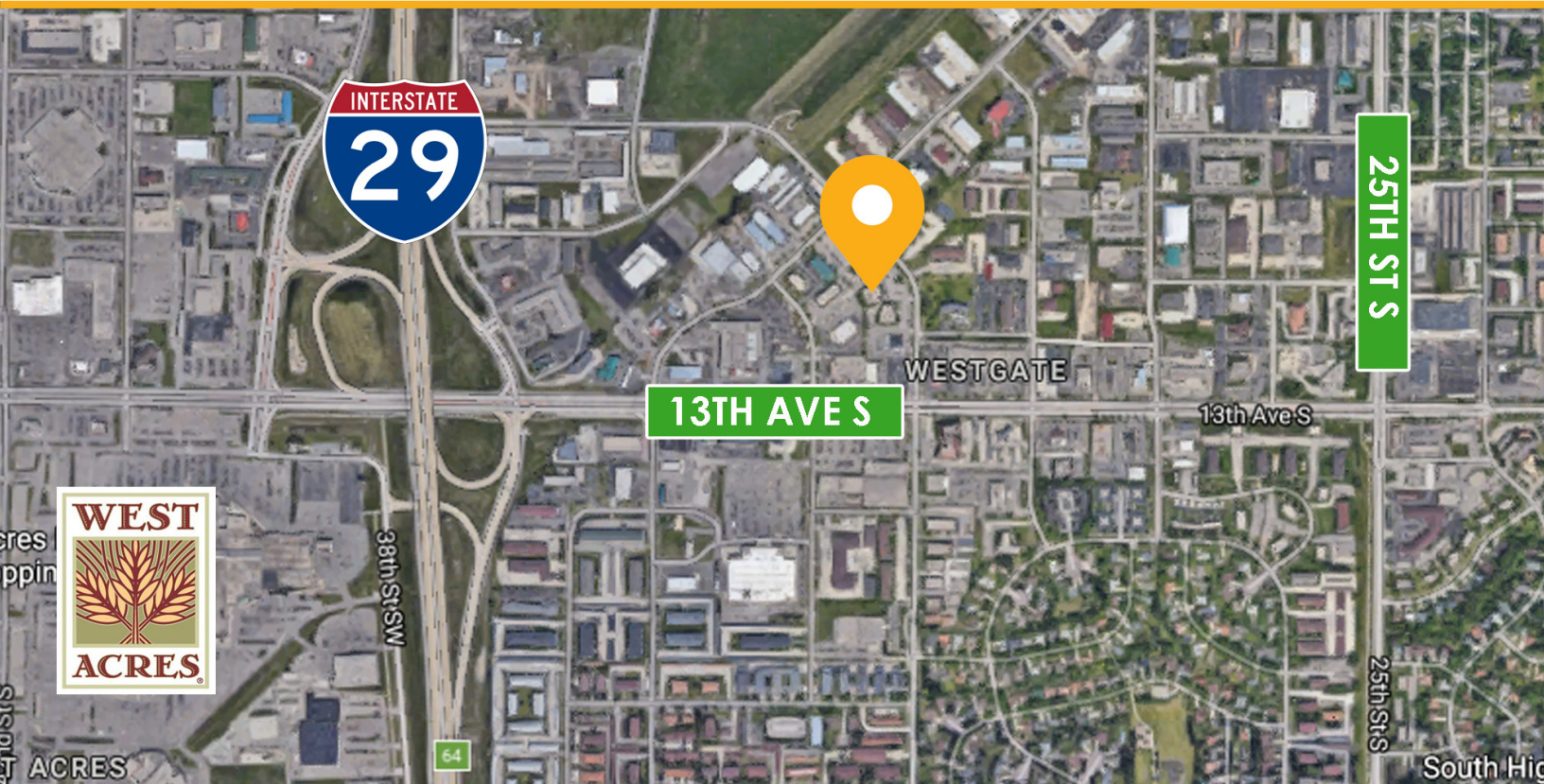
BUILDING 1121

Suite 200 - 1,888 SF
Suite 204 - 1,882 SF
Suite 208 - 1,173 SF

BUILDING 1131

Suite 202 - 1,465 SF
Suite 204 - 1,869 SF
Suite 208 - 1,911 SF

This information has been secured from sources we believe to be reliable, but we make no representation or warranties, expressed or implied, as to the accuracy of the information. Interested parties should conduct their own independent investigations and rely only on those results.

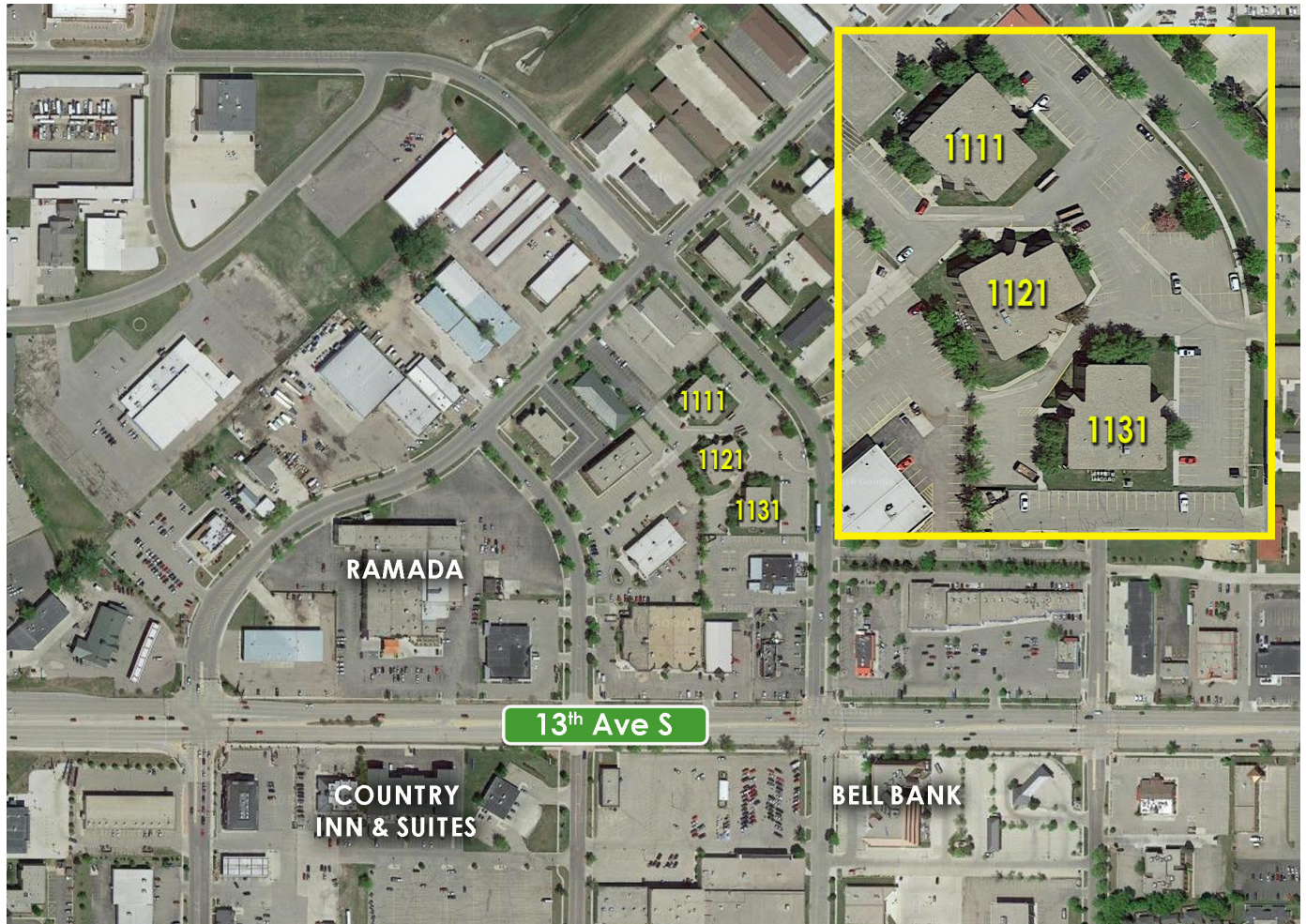


AGASSIZ SQUARE

1111, 1121, 1131 WESTRAC DRIVE, FARGO, ND

GOLDMARK[™]
COMMERCIAL REAL ESTATE INC

SITE MAP

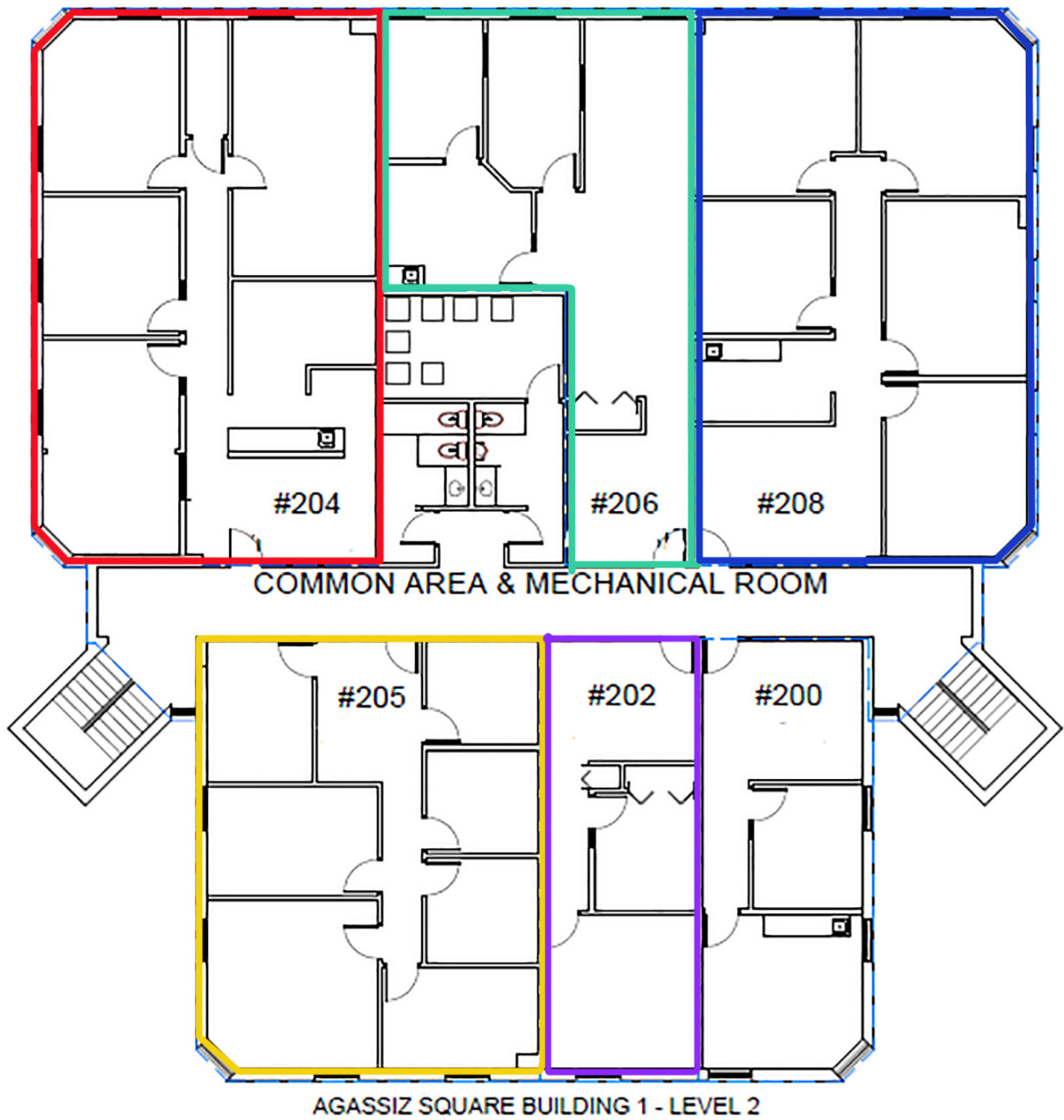


AGASSIZ SQUARE

1111, 1121, 1131 WESTRAC DRIVE, FARGO, ND

GOLDMARK™
COMMERCIAL REAL ESTATE INC

BUILDING 1111 - SUITE 202, 204, 205, 206, 208

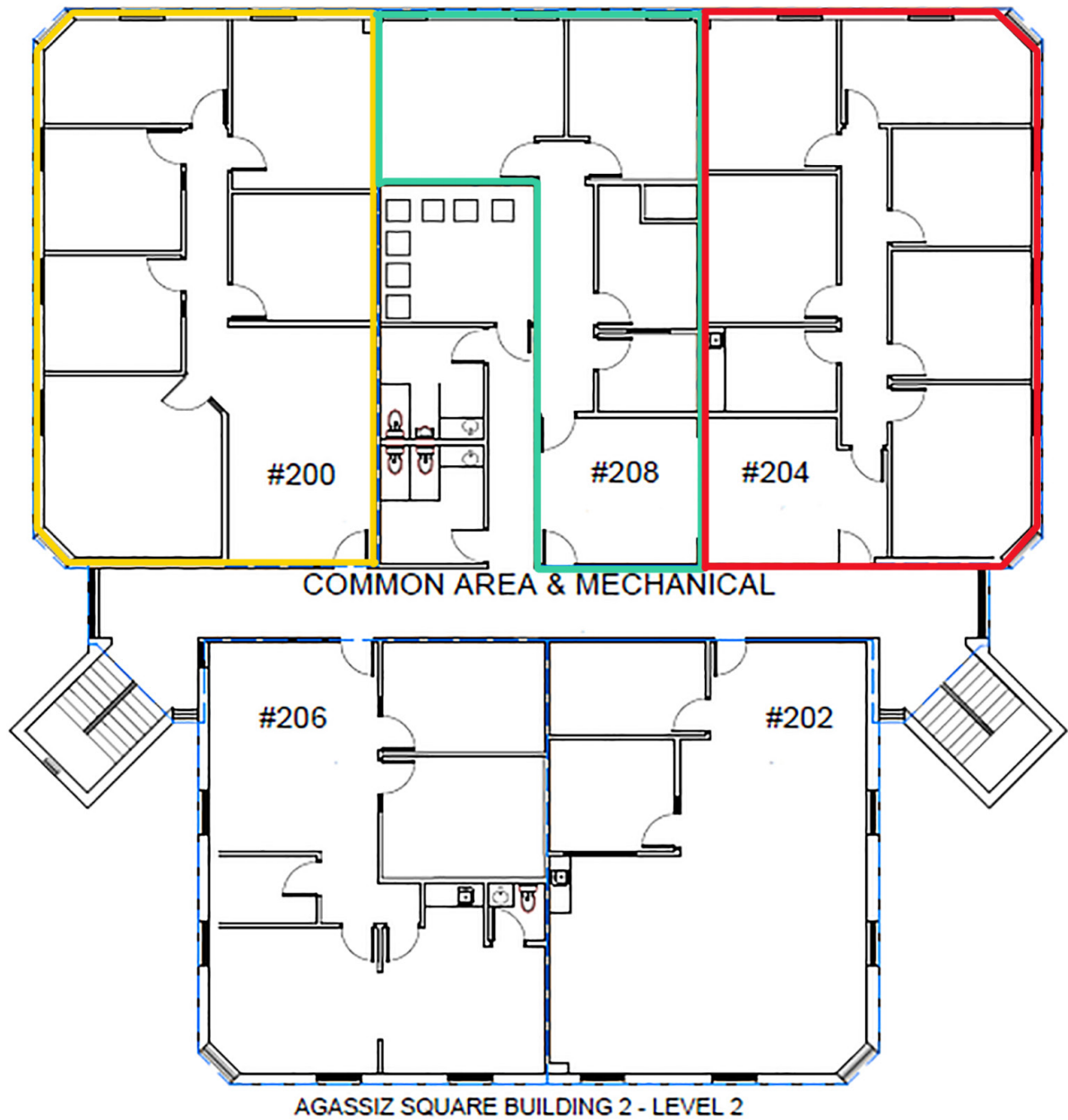


AGASSIZ SQUARE

1111, 1121, 1131 WESTRAC DRIVE, FARGO, ND

GOLDMARK™
COMMERCIAL REAL ESTATE INC

BUILDING 1121 - SUITE 200, 204, 208



AGASSIZ SQUARE

1111, 1121, 1131 WESTRAC DRIVE, FARGO, ND

GOLDMARK™
COMMERCIAL REAL ESTATE INC

BUILDING 1131 - SUITE 202, 204, 208

