

# Northwest Beaver Business Park

4730 & 4740 NW 59th Avenue  
Johnston, IA 50131

Commercial development land located just west and north of the I-35/80 and Merle Hay Road exit and in the NW Beaver Business Park. Business Park includes both commercial buildings and multi-family development.

## Lot Size

- + 4730 NW 59th - 1.816 AC
- + 4740 NW 59th - 1.486 AC

## Sale Price

- + 4730 NW 59th - \$454,854 (\$5.75 PSF)
- + 4740 NW 59th - \$372,198 (\$5.75 PSF)
- + Both lots - \$755,134 (\$5.25 PSF)

## Site Features

- + Easy access to Merle Hay Road, I-35/80, and NW Beaver Dr.
- + Ideal for multifamily development
- + All utilities
- + Zoned R-4: High Density Multiple Family & PUD

## Contact Us

### Michael A. Smith

Vice President

+1 515 975 1112

mike.smith8@cbre.com

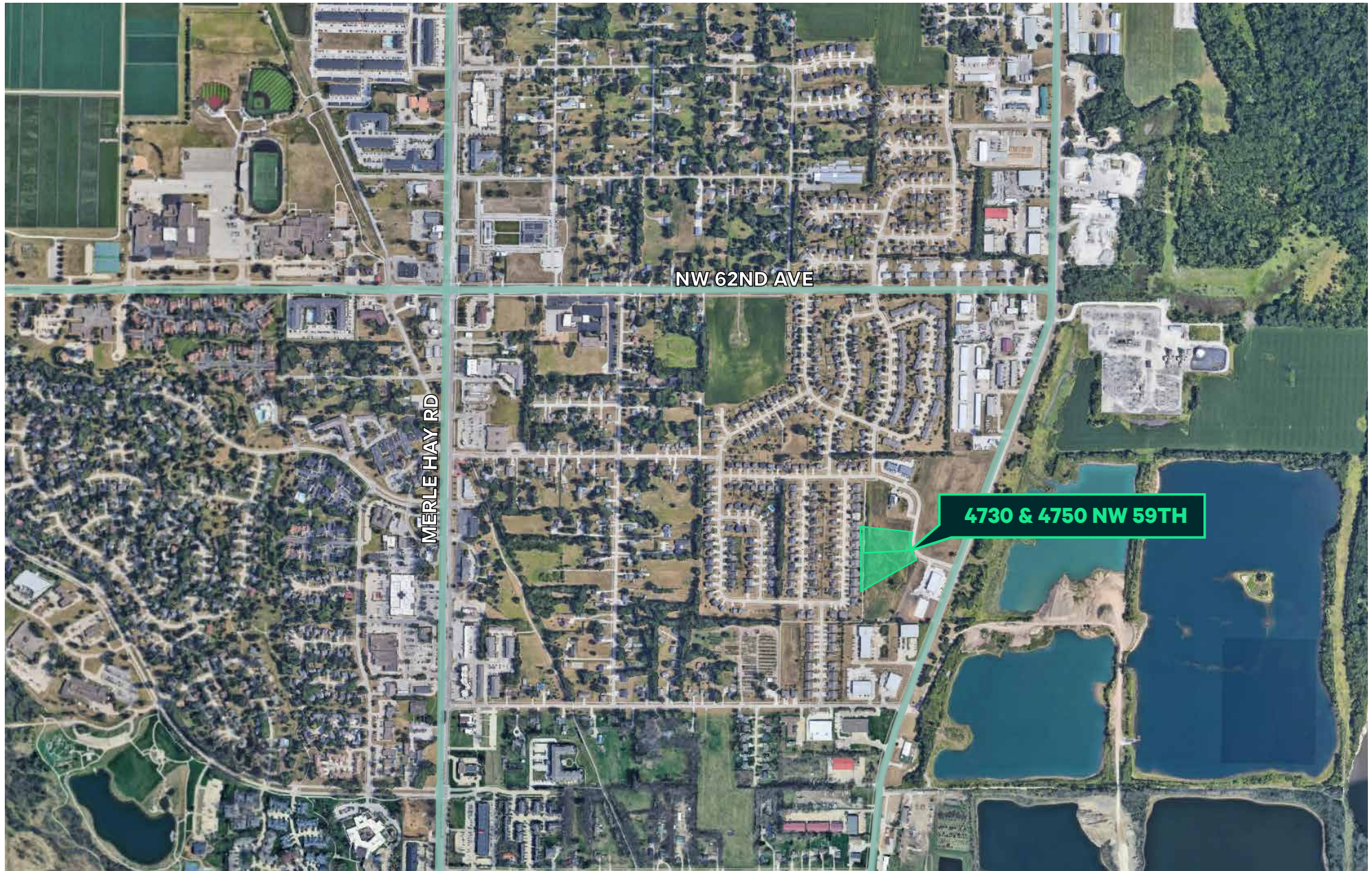
Licensed in the State of Iowa





**Commercial Development Land**  
4730 & 4740 NW 59th | Johnston, Iowa

For Sale

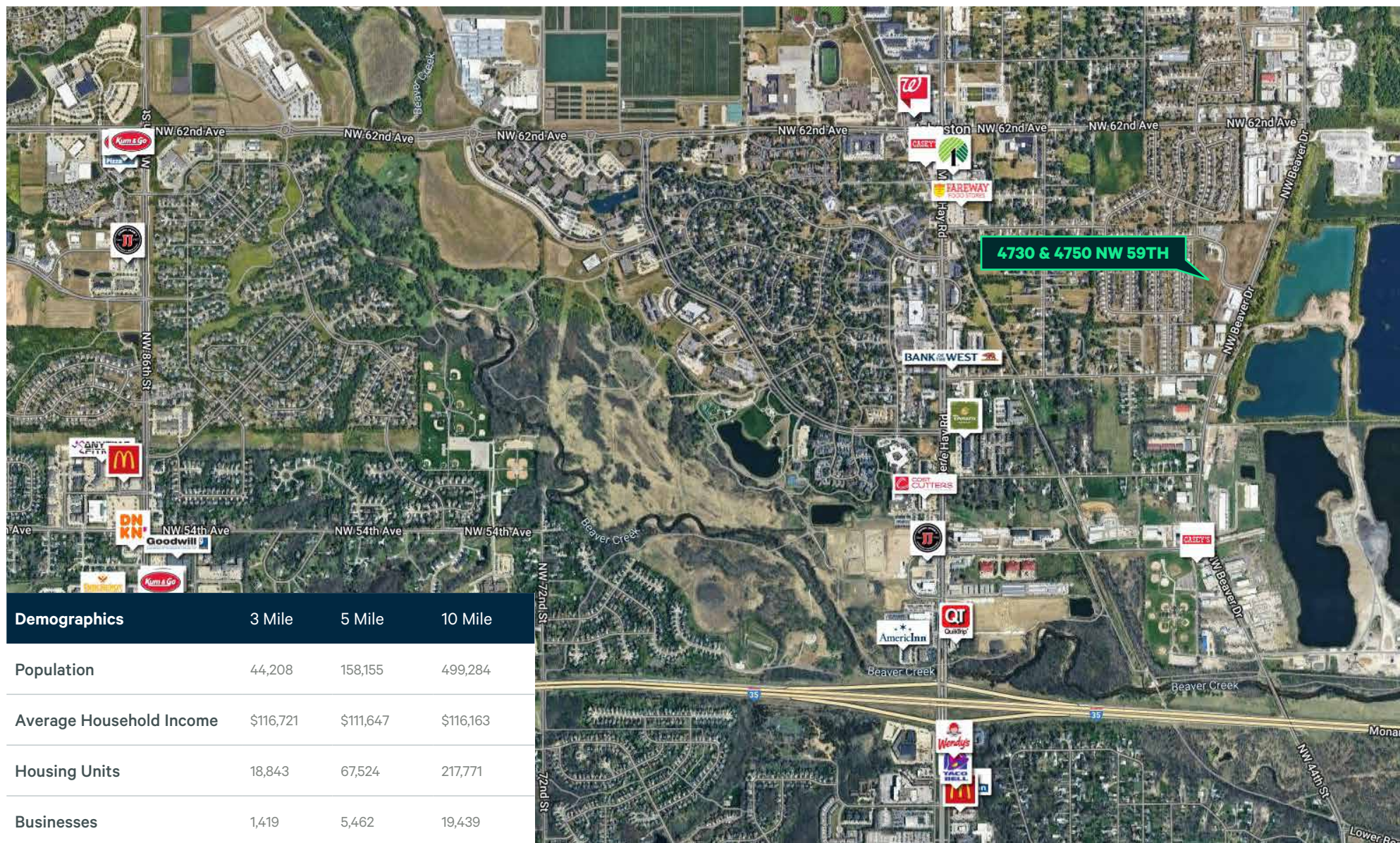




## Commercial Development Land

4730 & 4740 NW 59th | Johnston, Iowa

For Sale



© 2025 CBRE, Inc. All rights reserved. This information has been obtained from sources believed reliable, but has not been verified for accuracy or completeness. You should conduct a careful, independent investigation of the property and verify all information. Any reliance on this information is solely at your own risk. CBRE and the CBRE logo are service marks of CBRE, Inc. All other marks displayed on this document are the property of their respective owners, and the use of such logos does not imply any affiliation with or endorsement of CBRE. Photos herein are the property of their respective owners. Use of these images without the express written consent of the owner is prohibited.