

**16,500 sq. ft. of Industrial Space For Lease**  
**1966-B Broad Hollow Rd, Farmingdale**



**Specifications:**

**Building Size:** 54,165 sq. ft.  
**Lot Size:** 2.87 Acres  
**Office Space:** 2,009 sq. ft.  
**Ceiling Height:** 22.4'  
**Loading:** 2 Dock(s)  
**Power:** ample amps  
**A/C:** Offices Only  
**Sewers:** Yes

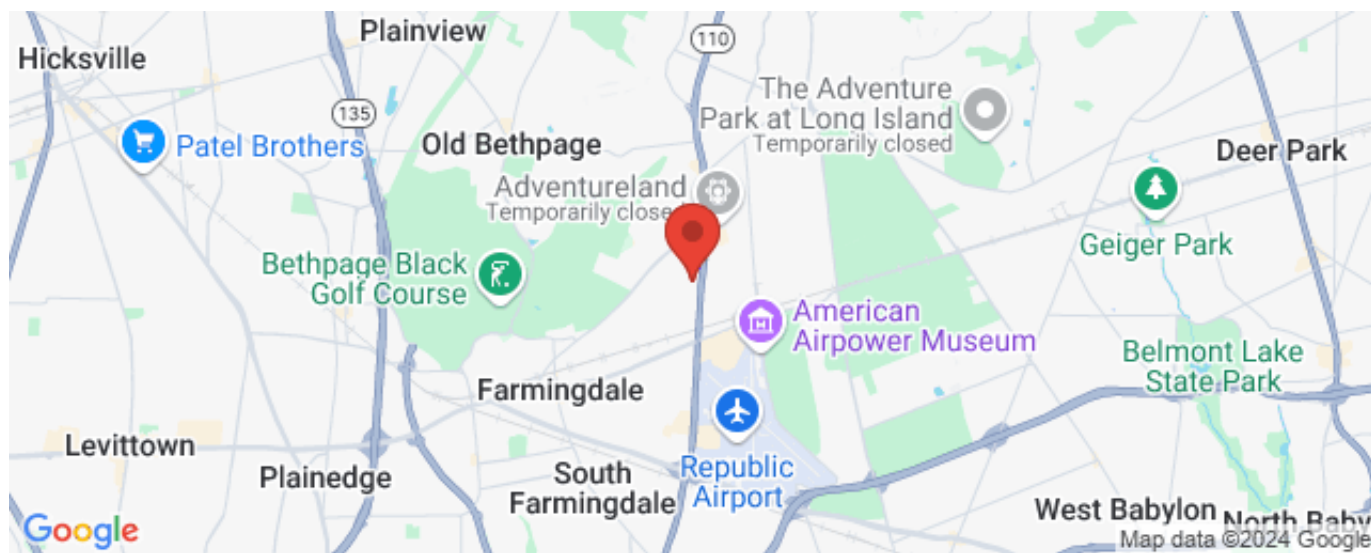
**Pricing and Timing:**

**Occupancy:** Flexible  
**Lease Price:** Negotiable  
**Taxes:** \$170,619.75  
 (\$3.15/sq. ft.)

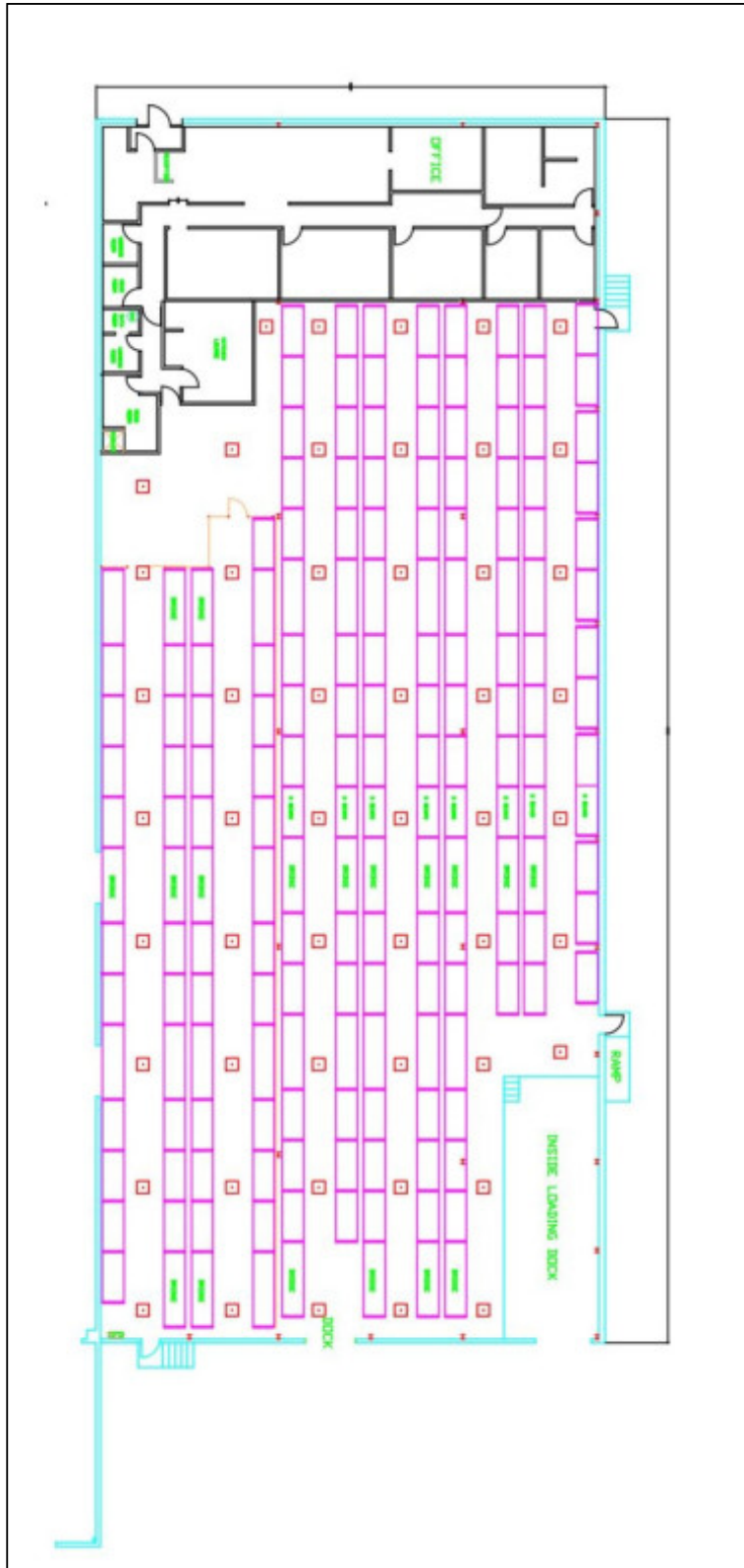
- Narrow aisle pallet rack storage for approx. 1,382 pallets
- LED Warehouse lighting with motion sensors
- Upgraded high pile storage fire sprinkler system
- Skylights



**For more information please contact:**  
**Jeffrey Starr, RE Salesperson**  
 516-901-6745 (cell)  
 631-293-3700 x36  
[js@schackerrealty.com](mailto:js@schackerrealty.com)

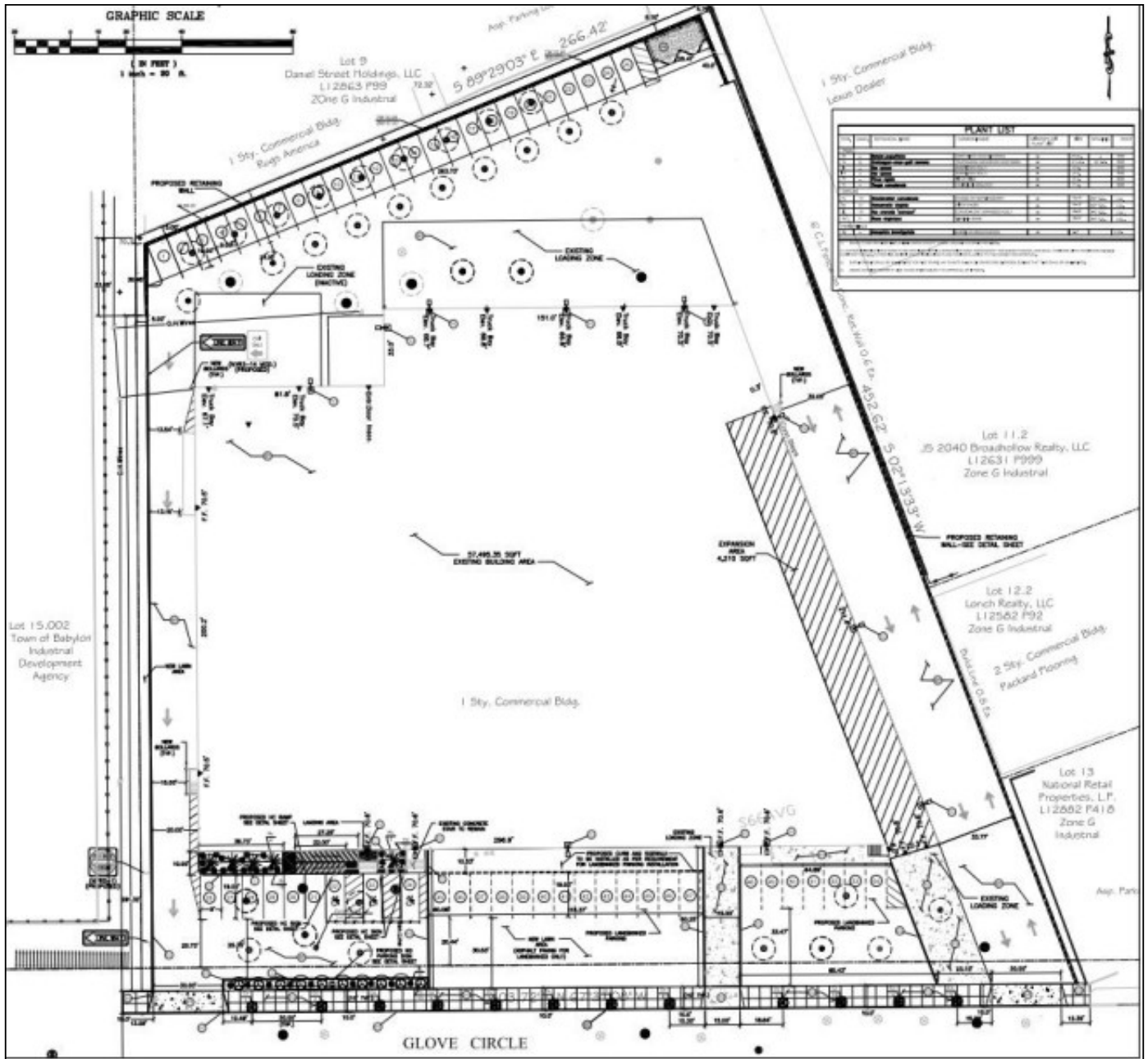


All information is subject to errors, omissions, modification, and withdrawal.  
Measurements may be estimates and information shown should not be relied upon without independent verification.

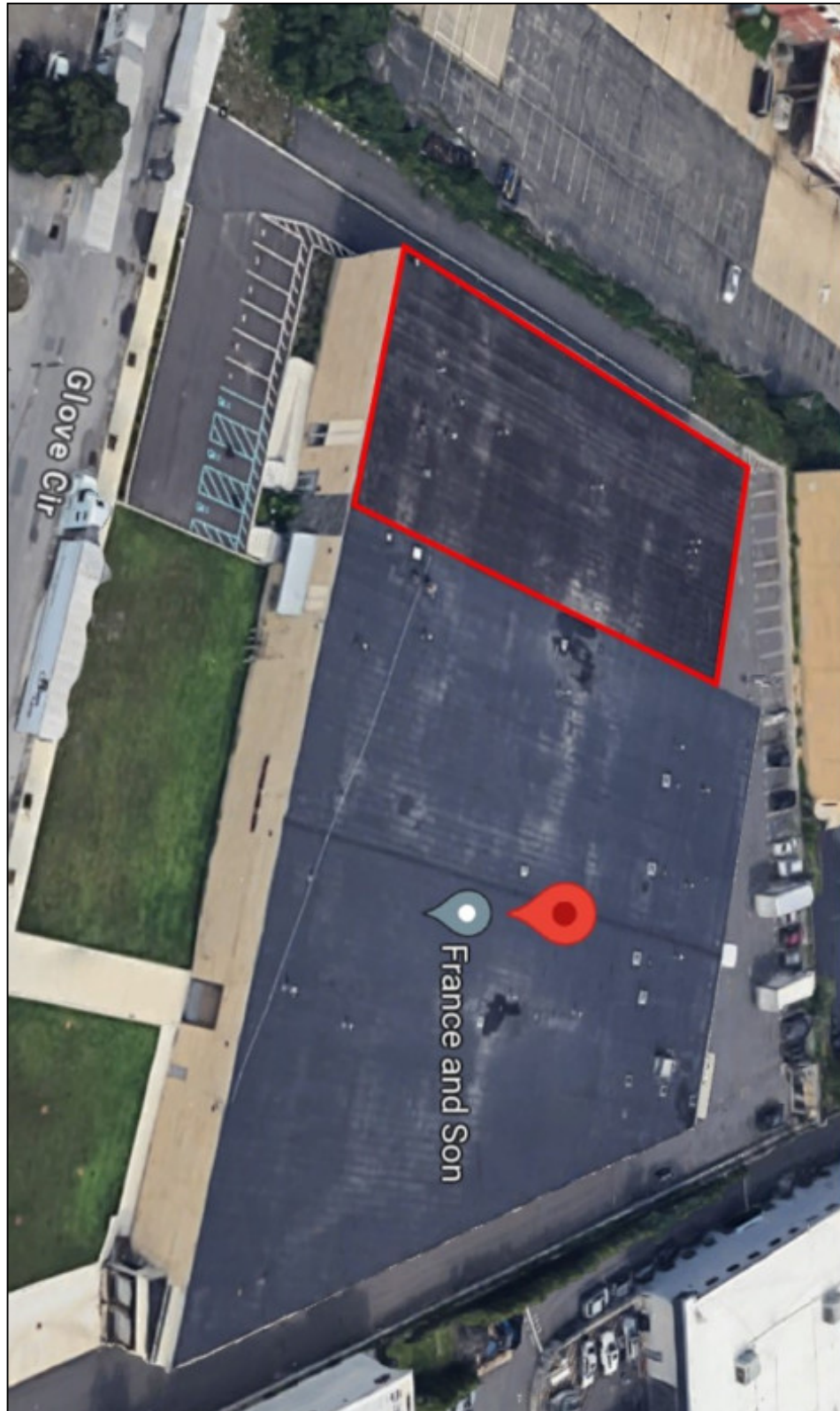


All information is subject to errors, omissions, modification, and withdrawal.  
Measurements may be estimates and information shown should not be relied upon without independent verification.

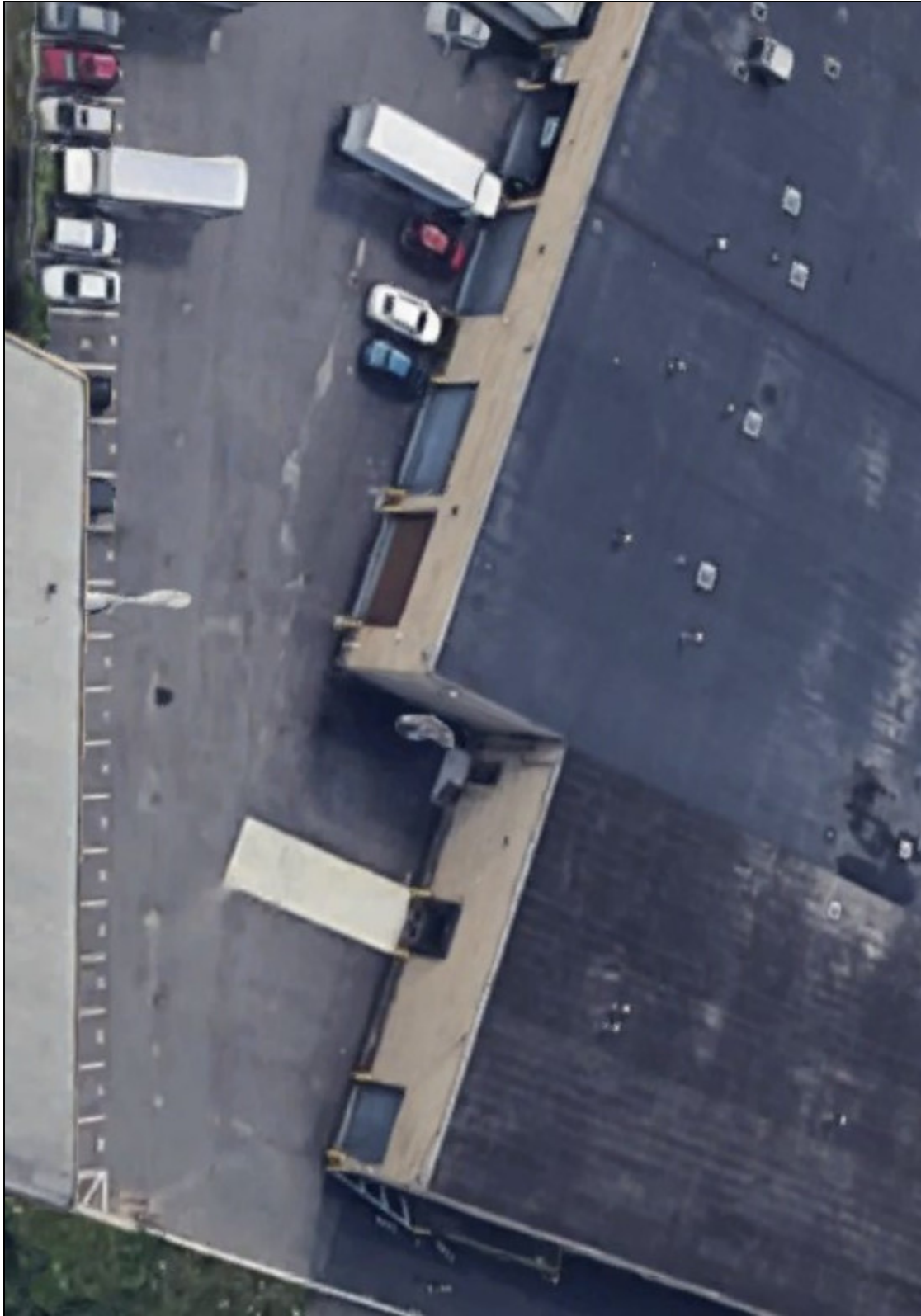




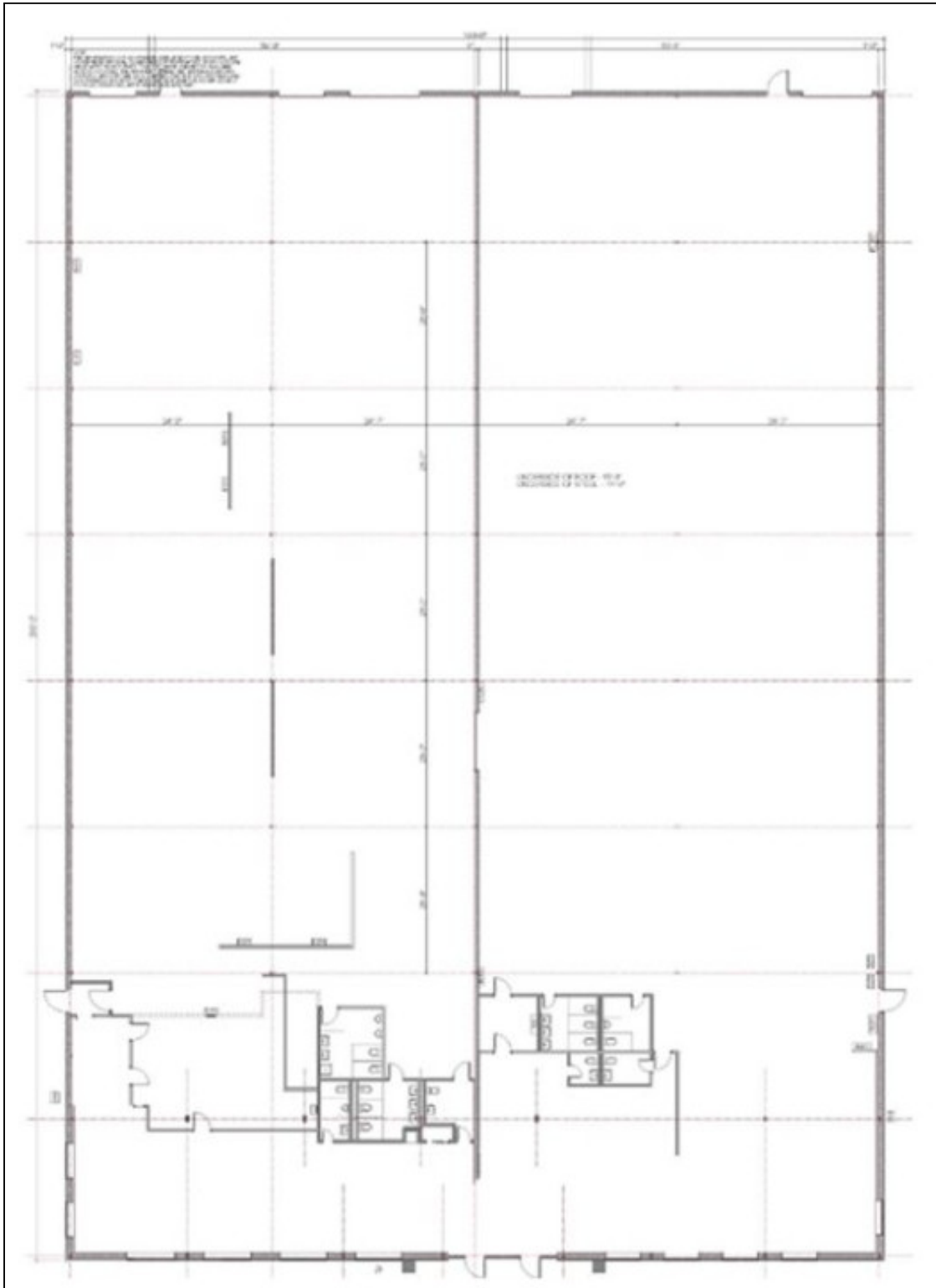
All information is subject to errors, omissions, modification, and withdrawal.  
 Measurements may be estimates and information shown should not be relied upon without independent verification.



All information is subject to errors, omissions, modification, and withdrawal.  
Measurements may be estimates and information shown should not be relied upon without independent verification.



All information is subject to errors, omissions, modification, and withdrawal.  
Measurements may be estimates and information shown should not be relied upon without independent verification.



All information is subject to errors, omissions, modification, and withdrawal.  
Measurements may be estimates and information shown should not be relied upon without independent verification.