

# OFFICE AND RETAIL FOR LEASE



**Wolf Co.**  
REAL ESTATE

## 1170 KANE CONCOURSE

1170 Kane is strategically located in Bay Harbor Island, just off the prominent intersection of W Bay Harbor Dr/Kane Concourse.

14,000 SF of Office Space and 600 SF of Prime Retail Corner Space.

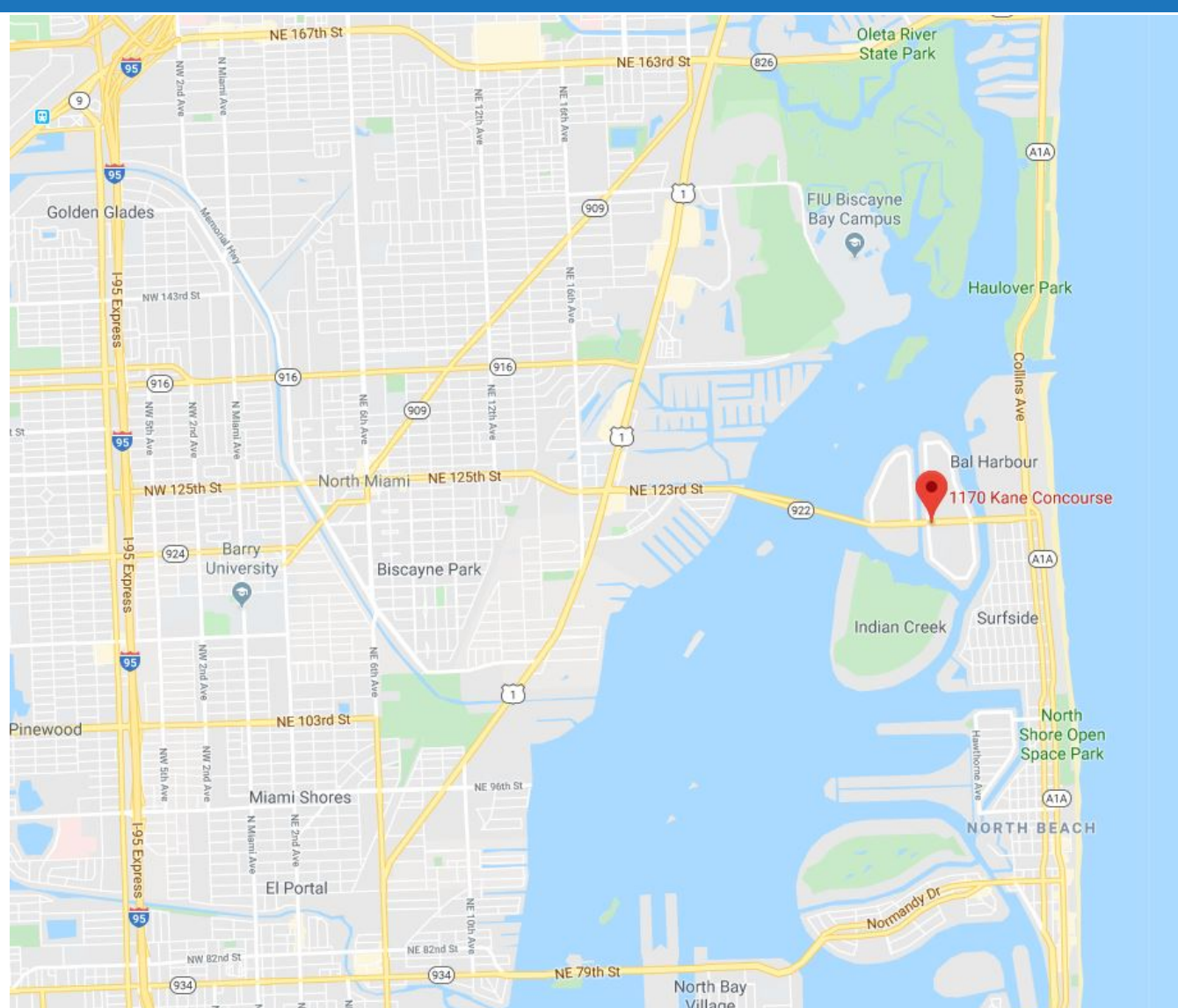
OFFICE AND RETAIL FOR LEASE



## FEATURES & AMENITIES

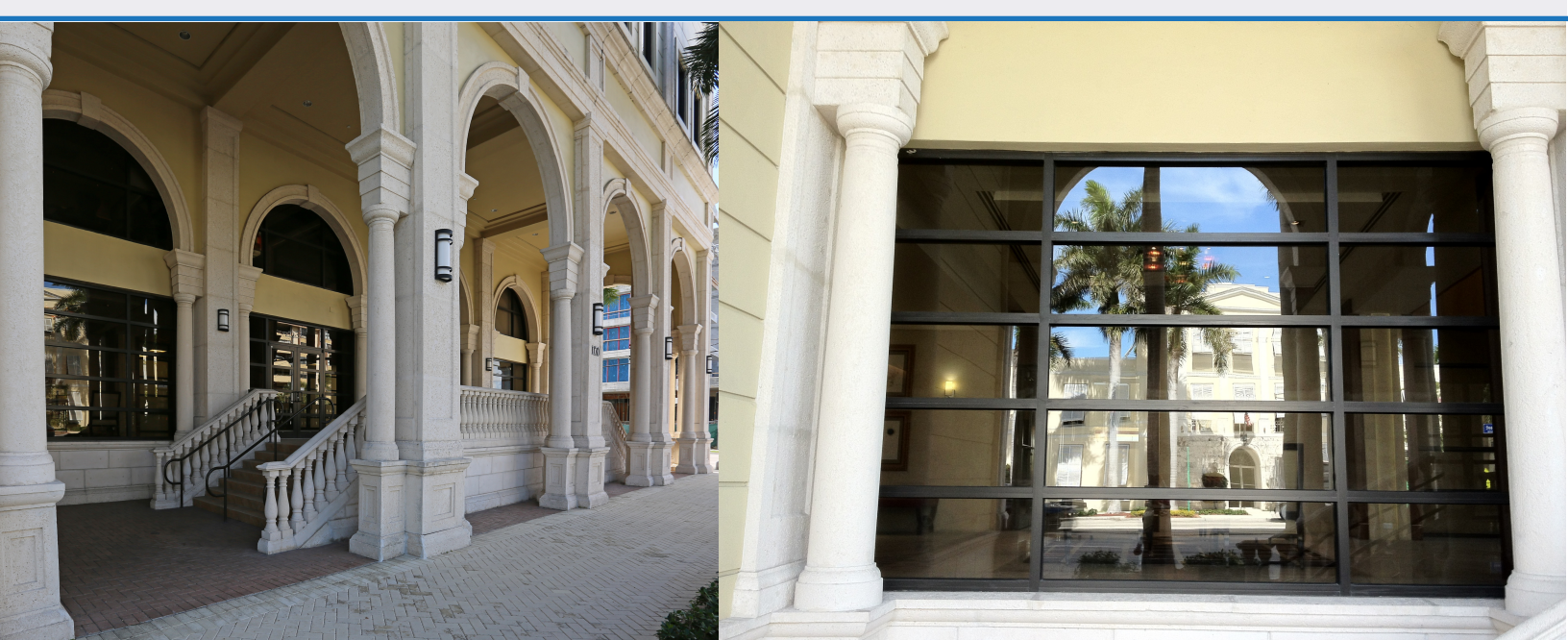
- CLASS A OFFICE SPACE FOR LEASE
- ABUNDANT COVERED PARKING AVAILABLE
- STATE-OF-THE-ART 24/7 SECURITY SYSTEM
- IMPACT RESISTANT WINDOWS
- ON-SITE PROPERTY MANAGEMENT
- WALK TO PROMINENT RESTAURANTS AND SHOPS
- EASE OF ACCESS TO US1 AND COLLINS AVENUE
- ACCESS TO MIAMI'S MOST AFFLUENT DISTRICT

**SITE ADDRESS:**  
1170 KANE CONCOURSE,  
BAY HARBOR ISLANDS, FL 33154



## BAY HARBOR ISLANDS

Visitors to Bay Harbor Islands are pleasantly surprised to discover a quaint and elegant two block business district on Kane Concourse (96 Street). Along the beautifully landscaped Concourse visitors find great shopping, fine dining, professional offices and art. On the eastern most median, Robert Indiana's "Love" sculpture adorns the median nestled amongst the beautiful and majestic palms. At the western most median, Romero Britto's "Heart" sculpture shines brightly to capture the essence of the beautiful islands that make up the Town.



CONTACT US TODAY FOR AVAILABILITY

CEO Barrett Wolf	[BWOLF@WOLFCO-RE.COM](mailto:BWOLF@WOLFCO-RE.COM)
VP Anabell Schuyler	[ANABELL@WOLFCO-RE.COM](mailto:ANABELL@WOLFCO-RE.COM)
Associate Carlos Godoy	[CARLOS@WOLFCO-RE.COM](mailto:CARLOS@WOLFCO-RE.COM)

| [WWW.WOLFCO-RE.COM](http://WWW.WOLFCO-RE.COM) | [INFO@WOLFCO-RE.COM](mailto:INFO@WOLFCO-RE.COM) |

