



FOR LEASE

**±19,253 SF BUILDING
ON ±8.5 USEABLE ACRES**

122 Pride Drive
Simpsonville, SC 29681



LEE & ASSOCIATES
GREENVILLE/SPARTANBURG

Andrew Harrill, SIOR, CCIM
Senior Vice President
864.607.7223
aharrill@lee-associates.com

Jordan Skellie, SIOR
EVP/Principal
864.238.2188
jskellie@lee-associates.com

PRICING/RATE:

**CALL FOR
PRICING**

- Ability to Subdivide Building + Acreage
- Heavy Power
- Expandable Laydown Yard
- Renovations to be Completed Including New Lighting, New Roof, Office Upgrades, and More
- Zoned for Industrial Outdoor Storage (S-1 Greenville County)

Interactive PDF 

864.704.1040
LeeUpstate.com



INTERSTATE ACCESS
±1.0 MILES



TAX MAP
0323010100400

PROPERTY PHOTOS

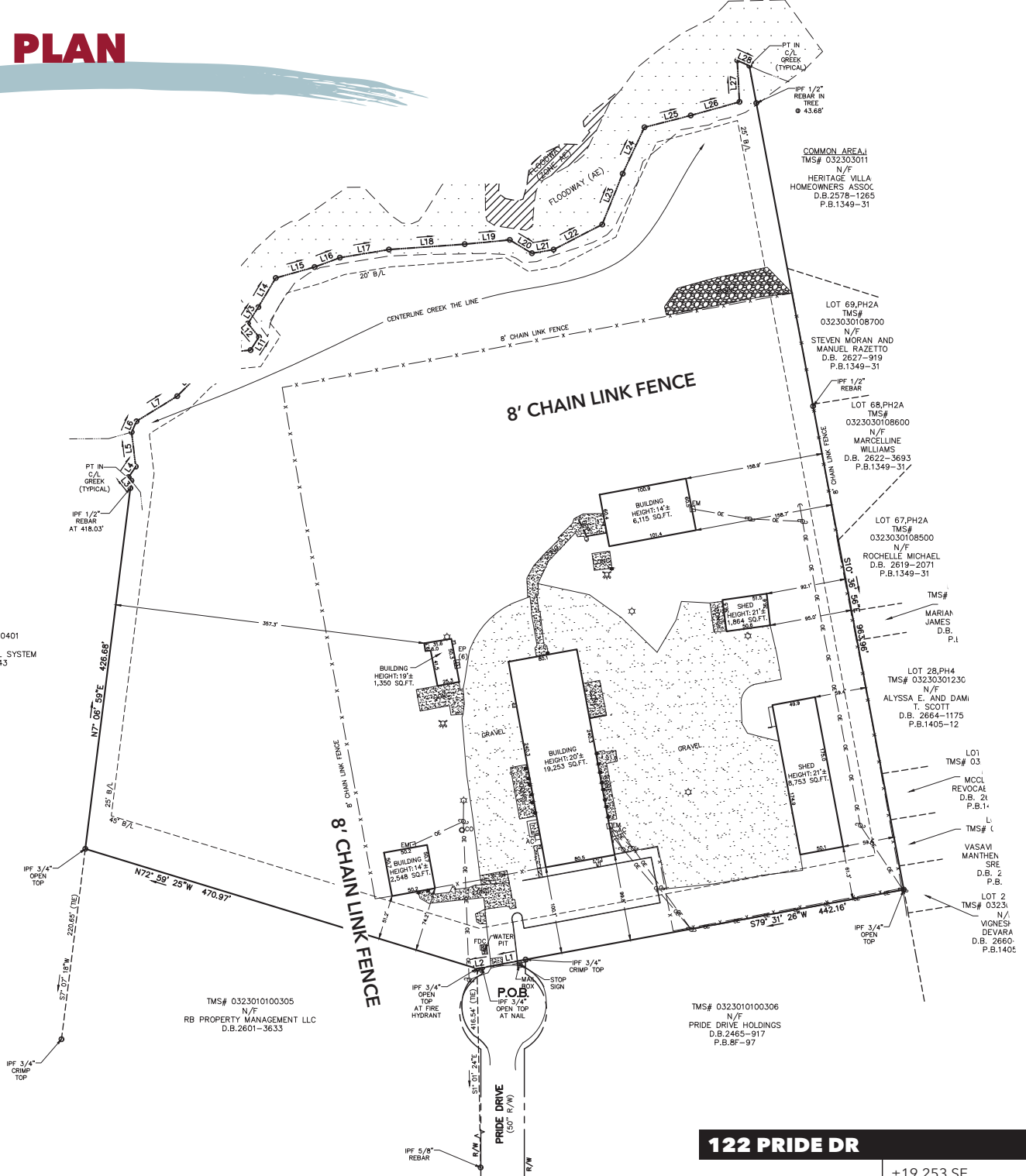


Interactive PDF 

201 W. McBee Ave, Suite 400, Greenville, SC 29601
320 E. Main Street, Suite 430, Spartanburg, SC 29302
LeeUpstate.com | 864.704.1040



SITE PLAN



ACREAGE	
WITHIN FENCE	±8.5 Acres
SITE TOTAL	±15.0 Acres

122 PRIDE DR	
TOTAL SF	±19,253 SF (±16,453 SF Warehouse; ±2,800 SF Office)
CLEAR HEIGHT	13.5' - 17.0'
SPRINKLERS	100% Wet
POWER	800A/600V
DRIVE-INS	9 (12'x14')
DOCK HIGH DOORS	2 (12'x14')



201 W. McBee Ave, Suite 400, Greenville, SC 29601
 320 E. Main Street, Suite 430, Spartanburg, SC 29302
LeeUpstate.com | 864.704.1040



LOCATION OVERVIEW



Click Here to View the Interactive Map

**±1.0 Miles
to I-385**

Interactive PDF 

201 W. McBee Ave, Suite 400, Greenville, SC 29601
320 E. Main Street, Suite 430, Spartanburg, SC 29302
LeeUpstate.com | 864.704.1040



Interactive PDF



LEARN MORE
CALL TODAY



LEE & ASSOCIATES
GREENVILLE/SPARTANBURG

864.704.1040
LeeUpstate.com

GREENVILLE OFFICE
201 W. McBee Ave, Suite 400
Greenville, SC 29601

SPARTANBURG OFFICE
320 E. Main Street, Suite 430
Spartanburg, SC 29302

All information furnished regarding the properties and information in this packet is from sources deemed reliable, but no warranty or representation is made to the accuracy thereof and same is submitted to errors, omissions, change of price, rental or other conditions prior to sale, lease or financing or withdrawal without notice. No liability of any kind is to be imposed on the broker herein.



Andrew Harrill, SIOR, CCIM
Senior Vice President
864.607.7223
aharrill@lee-associates.com



Jordan Skellie, SIOR
EVP/Principal
864.238.2188
jskellie@lee-associates.com