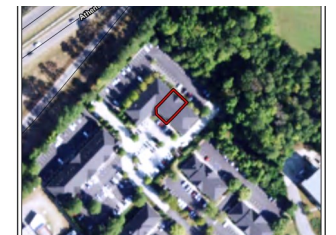


# 1500 Oglethorpe Ave Unit 3500



Offered for \$22/SF + NNN

## 1500 Oglethorpe Ave Unit 3500 | Clarke County, GA | 30606

SLE Commercial Group is proud to present a high-end, newly renovated Medical Office Suite available FOR LEASE July 1st, 2023. The space is located inside the established Resource Medical Office Park where tenants such as Piedmont and Saint Mary's lease space. This offering is for Unit 3500 which provides a spacious 2,100 SQFT of well-designed medical office space. Completely new on the inside with an all new floor plan, this turnkey space will have a clean, fresh and inviting feel. Offered inside of this fully optimized 2,100 SQFT space are Five (5) Exam Rooms, Two (2) Doctors Offices, Waiting Room, Check-In Entrance, Check-Out Exit, Reception, Two (2) Bathrooms, Staff Bathroom, Lab, and Breakroom. This space enjoys eight (8) designated parking spots. Resource Medical boasts a substantial parking area which has recently been resealed. Available FOR LEASE at \$25.75 / SQFT + NNN. \*Current pictures show the old layout. For more information, contact Travis Ebbert with SLE Commercial Group at 706-614-8840.

### Travis Ebbert

Listing Agent

1551 Jennings Mill Rd. Suite 1400A

Phone: 706.549.5050

Mobile: 706.614.8840

Fax: 706.549.8909

Email:

tebbert@southernlandexchange.com



Southern  
Land Exchange