

±15,026 SF OFFICE/WAREHOUSE

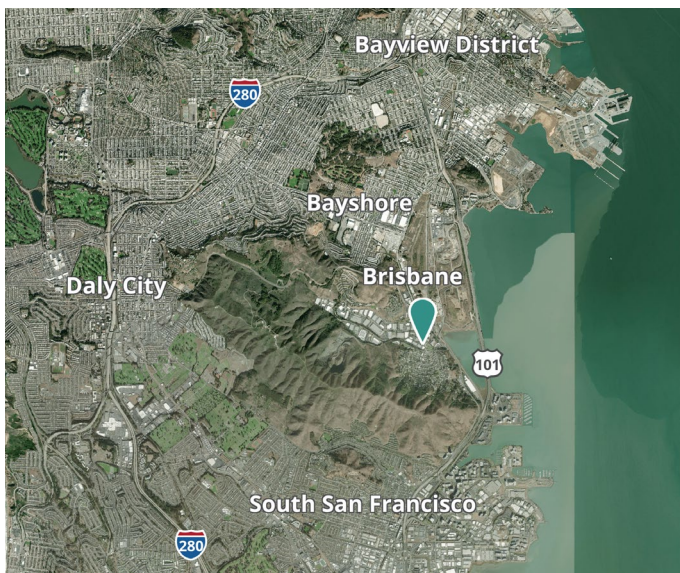


Industrial/Manufacturing Space For Lease

Prologis SFO 31



280 Old County Road
Brisbane, CA 94005 USA



FACILITY

- ±15,026 SF Office/Warehouse
- ±4,804 SF Office
- One Dock-High Loading Door
- Power: 500 Amps @ 120/208V
- Clear Height: ±22'
- HVAC Throughout
- Fully sprinklered
- Insulated warehouse
- 3 Entry Ways
- Kitchen
- 2 Bathrooms, 2 Stalls in Each
- Located in Crocker Industrial Park
- Zoning: TC-1 Crocker Park Trade Commercial District
- Pricing: Call for Details

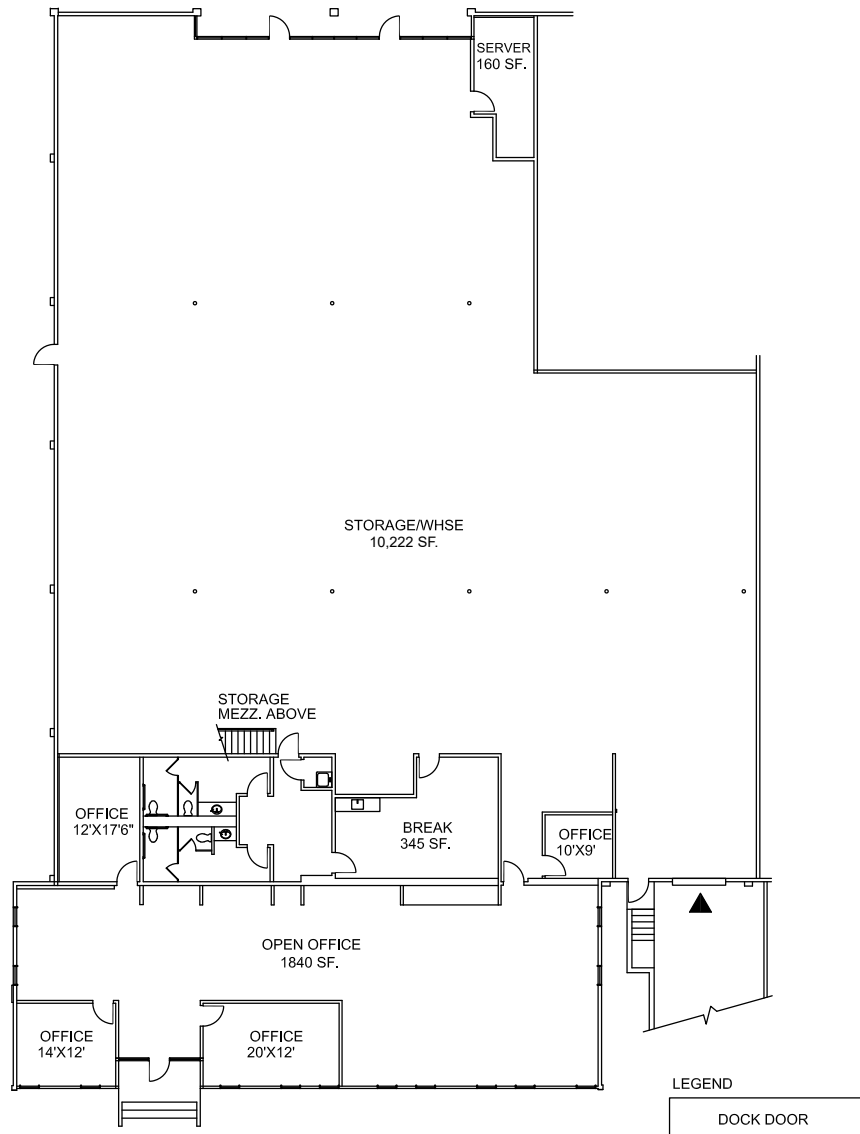
Your single-source service for efficient move-in and operations: [prologisessentials.com](https://www.prologisessentials.com)

±15,026 SF OFFICE/WAREHOUSE



Industrial/Manufacturing Space For Lease

Prologis SFO 31



Mike Davis, SIOR

Executive Vice President
mike.davis@colliers.com
cell +1 415 505 0237
1 North B Street, Suite 2700
San Mateo, CA 94065
CA Lic. No. 01315877

Jacob Zimmerman

Associate
jacob.zimmerman@colliers.com
cell +1 415 300 5915
1 North B Street, Suite 2700
San Mateo, CA 94065
CA Lic. No. 02206198

Prologis

Amy Pallas

Vice President, Leasing Officer
apallas@prologis.com
ph +1 510 661 4087
cell +1 650 380 3129
3353 Gateway Blvd
Fremont, CA 94538 USA
CA Lic. No. 00935272

±15,026 SF OFFICE/WAREHOUSE



Industrial/Manufacturing Space For Lease

Prologis SFO 31



Mike Davis, SIOR

Executive Vice President
mike.davis@colliers.com
cell +1 415 505 0237
1 North B Street, Suite 2700
San Mateo, CA 94065
CA Lic. No. 01315877

Jacob Zimmerman

Associate
jacob.zimmerman@colliers.com
cell +1 415 300 5915
1 North B Street, Suite 2700
San Mateo, CA 94065
CA Lic. No. 02206198

Prologis

Amy Pallas

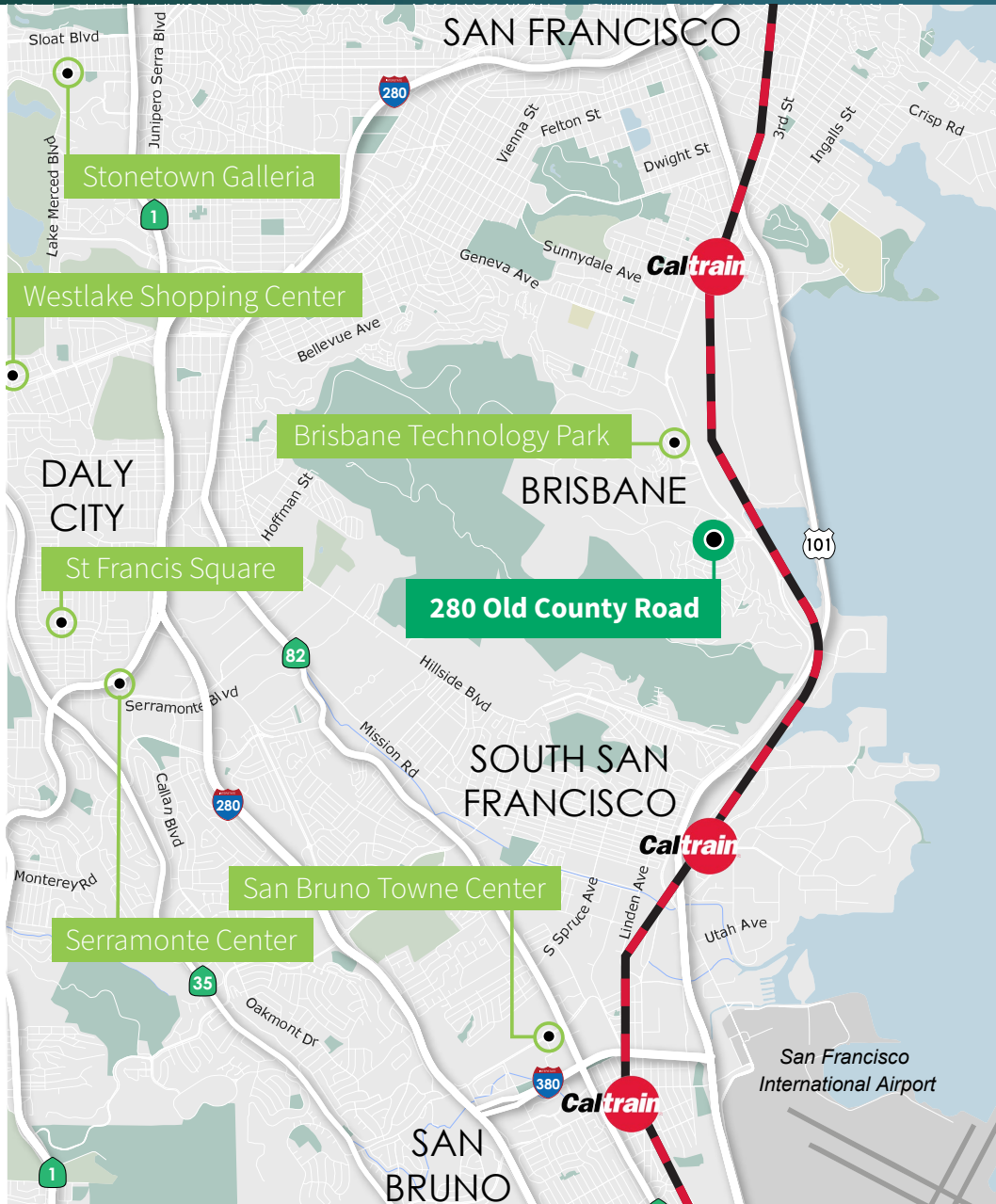
Vice President, Leasing Officer
apallas@prologis.com
ph +1 510 661 4087
cell +1 650 380 3129
3353 Gateway Blvd
Fremont, CA 94538 USA
CA Lic. No. 00935272

±15,026 SF OFFICE/WAREHOUSE



Industrial/Manufacturing Space For Lease

Prologis SFO 31



Mike Davis, SIOR

Executive Vice President
mike.davis@colliers.com
cell +1 415 505 0237
1 North B Street, Suite 2700
San Mateo, CA 94065
CA Lic. No. 01315877

Jacob Zimmerman

Associate
jacob.zimmerman@colliers.com
cell +1 415 300 5915
1 North B Street, Suite 2700
San Mateo, CA 94065
CA Lic. No. 02206198

Prologis

Amy Pallas

Vice President, Leasing Officer
apallas@prologis.com
ph +1 510 661 4087
cell +1 650 380 3129
3353 Gateway Blvd
Fremont, CA 94538 USA
CA Lic. No. 00935272

±15,026 SF OFFICE/WAREHOUSE



Industrial/Manufacturing Space For Lease

Prologis SFO 31



Mike Davis, SIOR

Executive Vice President
mike.davis@colliers.com
cell +1 415 505 0237
1 North B Street, Suite 2700
San Mateo, CA 94065
CA Lic. No. 01315877

Jacob Zimmerman

Associate
jacob.zimmerman@colliers.com
cell +1 415 300 5915
1 North B Street, Suite 2700
San Mateo, CA 94065
CA Lic. No. 02206198

Prologis

Amy Pallas

Vice President, Leasing Officer
apallas@prologis.com
ph +1 510 661 4087
cell +1 650 380 3129
3353 Gateway Blvd
Fremont, CA 94538 USA
CA Lic. No. 00935272