



# 142 Main/Front Street

OFFICE OR WAREHOUSE SPACE AVAILABLE

# 142 Main/Front Street

OFFICE OR WAREHOUSE SPACE AVAILABLE

## PROPERTY SUMMARY

- Land: 3.11 AC (139,872 SF)
- 2.3 AC of laydown area
- Taxes: \$4,000/yr
  
- **142 FRONT ST | WAREHOUSE:**
  - Prior Use: Metal Forging
  - Land: 2.3 AC (104,283 SF)
  - Building Size: 24,480 SF
  - Dims: 102' x 240'
    - Middle bay – 38' x 240' (clear 24'); Bridge Crane: 5-Ton
    - Side bays – 32' x 240' (clear 15')
  - Power: 220V/3P
  - Loading: (5) Drive-ins; (2) 14' x 10' / (3) 8' x 8'
  - No office in this building, separate located at 142 Main Street (960 SF)
  - Older roof
  
- **142 MAIN ST | OFFICE:**
  - Prior Use: Office
  - Land: 0.81 AC (35,589 SF)
  - Building Size: 960 SF (additional 960 in basement)
  - Dated space, would need to be updated

25,440 SF

AVAILABLE SPACE

I-2

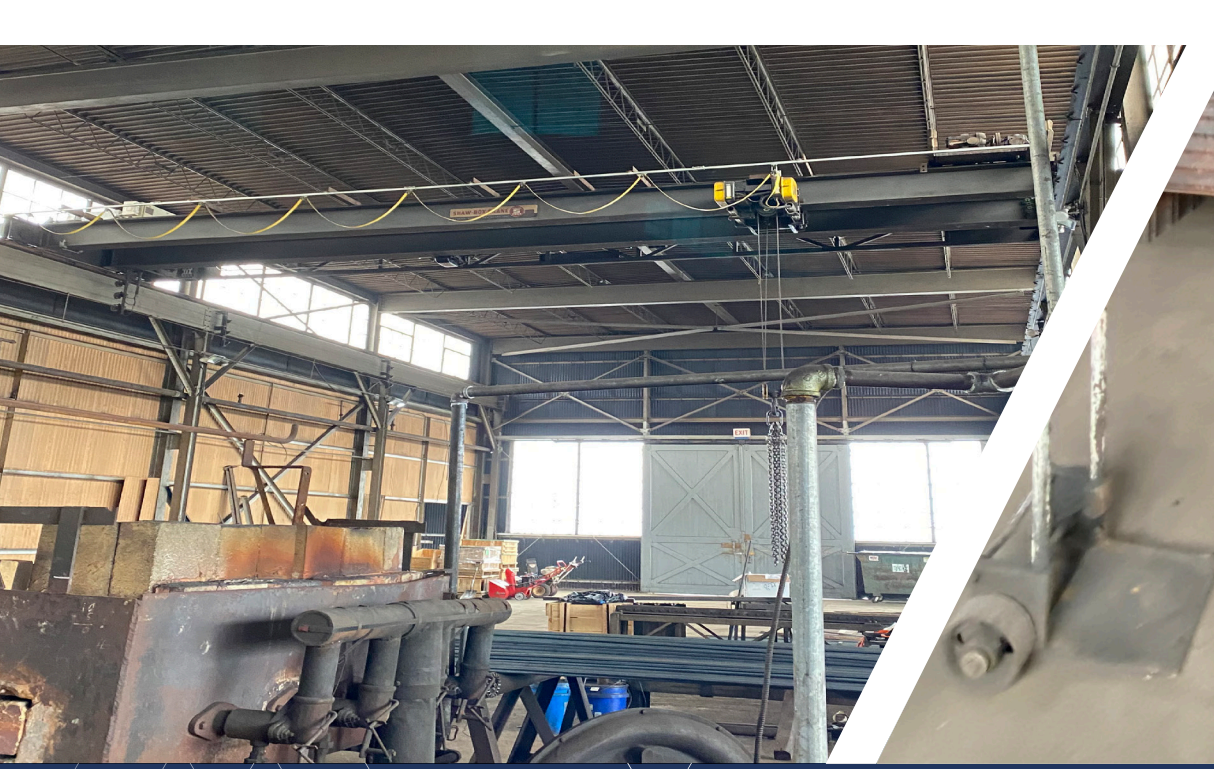
ZONING

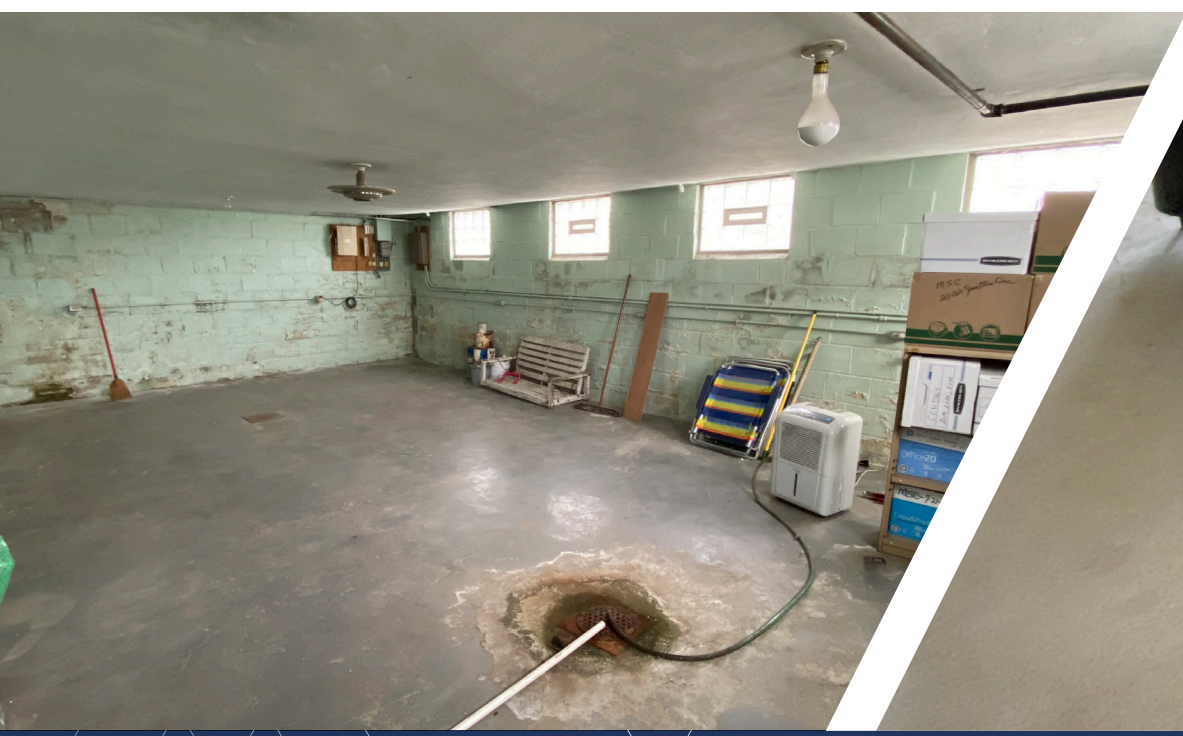
\$3.50/SF NNN

LEASE RATE

\$500,000

SALE PRICE





# Area Demographics - 5 Mile Radius



**\$86,635**  
Avg. Household  
Income

**11,544**  
Employees

**23,373**  
Population

**10,147**  
Households

**\$227,956**  
Avg. Household  
Value

**47.2**  
Median Age

# 142 Main/Front Street

OFFICE OR WAREHOUSE SPACE AVAILABLE



## CONTACTS

**Nick Smith**  
Associate  
+1 440 212 6715  
nick.smith1@cbre.com

**CBRE**  
950 Main Avenue  
Suite 800  
Cleveland, Ohio 44113

FOR SALE OR LEASE | LEETONIA, OHIO 44431

**CBRE**

© 2025 CBRE, Inc. All rights reserved. This information has been obtained from sources believed reliable but has not been verified for accuracy or completeness. CBRE, Inc. makes no guarantee, representation or warranty and accepts no responsibility or liability as to the accuracy, completeness, or reliability of the information contained herein. You should conduct a careful, independent investigation of the property and verify all information. Any reliance on this information is solely at your own risk. CBRE and the CBRE logo are service marks of CBRE, Inc. All other marks displayed on this document are the property of their respective owners, and the use of such marks does not imply any affiliation with or endorsement of CBRE. Photos herein are the property of their respective owners. Use of these images without the express written consent of the owner is prohibited. Licensed Real Estate Broker.